

FOR GROUND LEASE OR BUILD TO SUIT

816 Meridian Avenue E
Milton, WA 98354



NEW DEVELOPMENT OPPORTUNITY!

*RENDERING IS FOR CONCEPTUAL PURPOSES ONLY



SURPRISE LAKE SQUARE

Justin Holmes | Josh Parnell | Justice Knox

First Western Properties—Tacoma Inc. | 253.472.0404
6402 Tacoma Mall Blvd, Tacoma, WA 98409 | fwp-inc.com

SURPRISE LAKE SQUARE is a strong, grocery anchored shopping center situated between I-5 and State Route 167. It is a bustling neighborhood shopping center with national anchors such as Safeway and Anytime Fitness. It offers high visibility on the best corner in Milton, along with close proximity to Federal Way, Puyallup, Fife, Kent and Auburn.

900 MERIDIAN AVENUE E

▶ **GROUND LEASE OR BUILD TO SUIT | CALL FOR DETAILS**

- **Ample parking at 5/1,000.**
- **Established neighborhood:** Located in a well-established area of Milton with existing residential and commercial development.
- **Accessibility:** Easy access to major roadways like State Route 167, providing convenient connections to surrounding areas.
- **Surrounding amenities:** Depending on the specific unit or business type, potential proximity to various amenities like The Mill Steakhouse, grocery stores, and other businesses in the Surprise Lake Square shopping center.

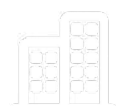


Population

Regis - 2024



Average HH Income



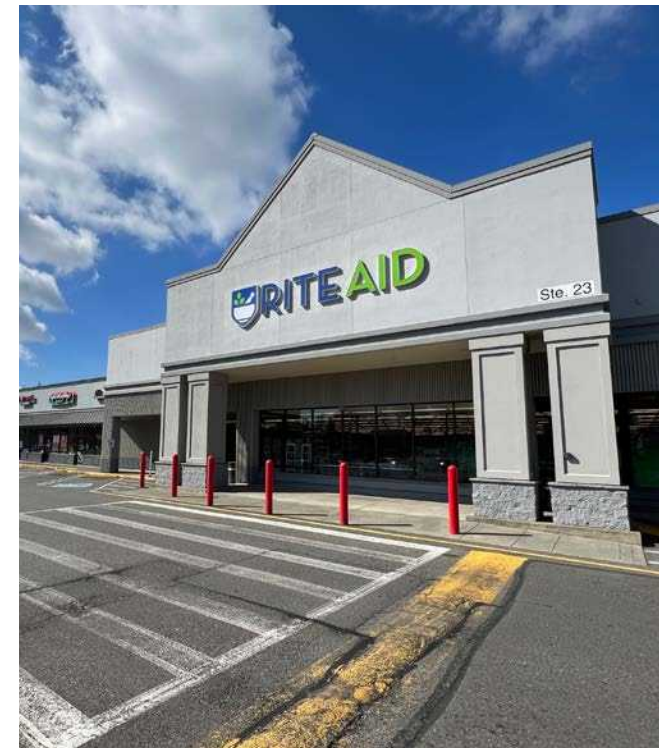
Daytime Population

	Population	Average HH Income	Daytime Population
Mile 1	11,188	\$112,320	4,687
Mile 3	55,615	\$127,691	35,547
Mile 5	189,677	\$126,482	128,324

TENANTS



SUMMARY



LOCATION DETAILS



30,845 CPD
Meridian Ave E



13,994 CPD
Milton Way



Located in a
bustling neighborhood
shopping center



Located between
I-5 and SR 167



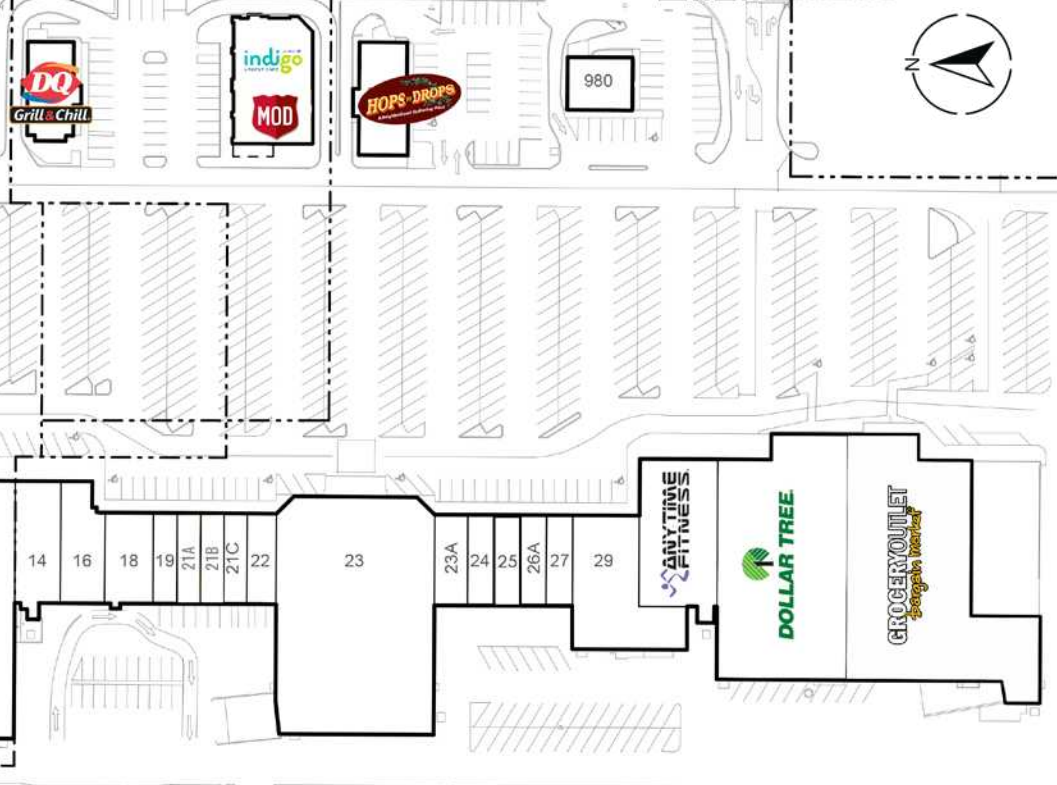
SITE PLAN

PROPOSED LAYOUT



MERIDIAN AVENUE

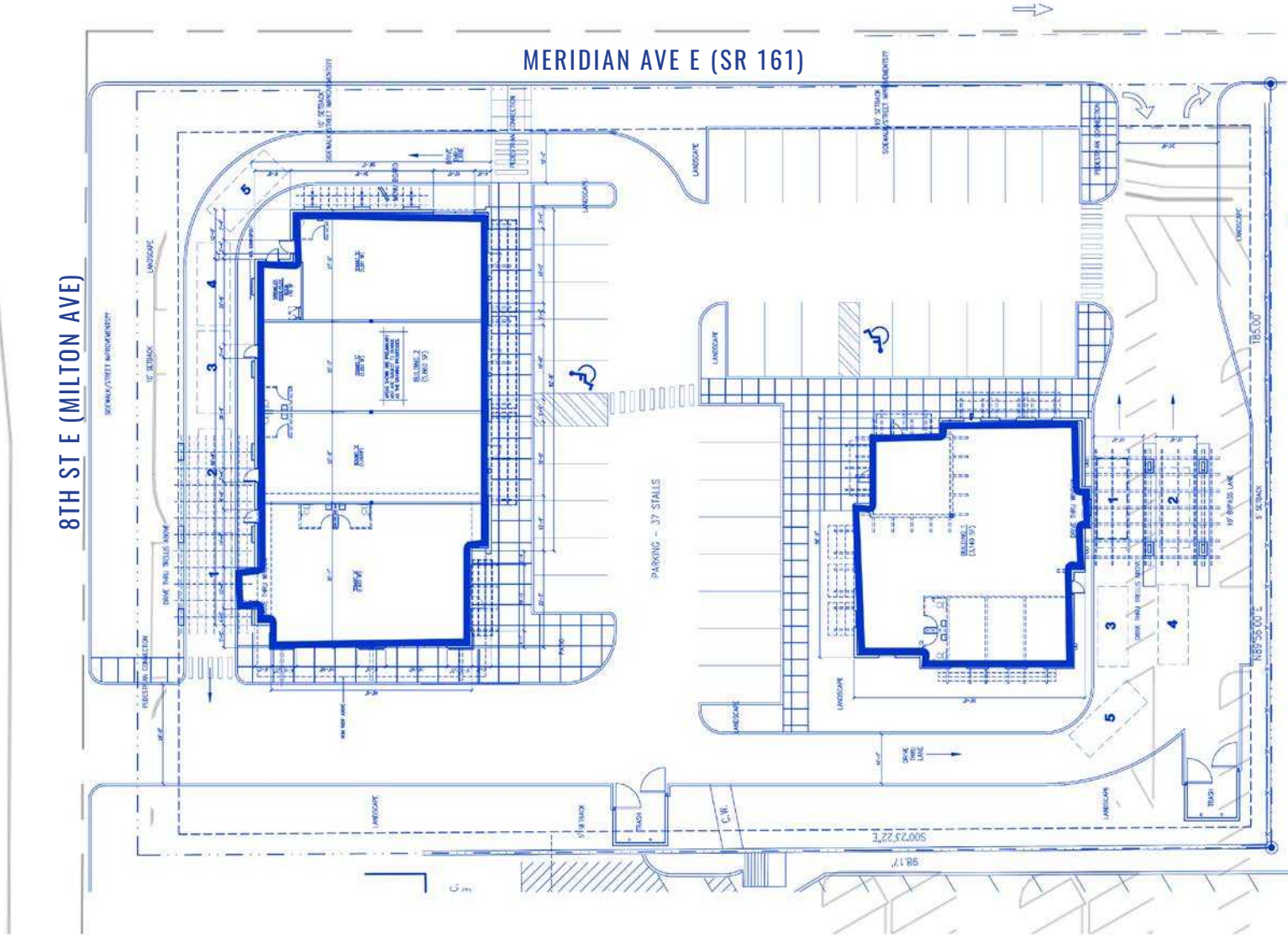
MILTON WAY



SITE PLAN

8TH ST E (MILTON AVE)

MERIDIAN AVE E (SR 161)



PROPOSED RENDERINGS



EAST ELEVATION

HS-1
Sconce Light Fixture (Typ.)
Charcoal/Black Storefront



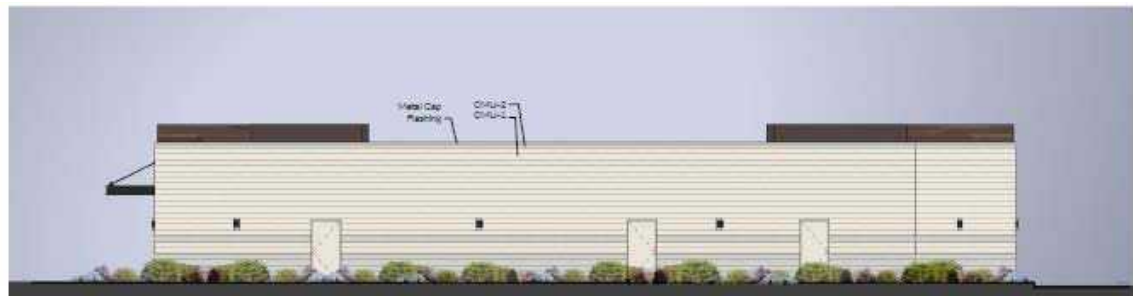
NORTH ELEVATION

Steel Canopy
Charcoal/Black Storefront
CMU-1
CMU-2



WEST ELEVATION

Charcoal/Black Metal Railings
Steel Canopy
Charcoal/Black Storefront



SOUTH ELEVATION


*FOR CONCEPTUAL PURPOSES ONLY


TACOMA | KIRKLAND | PORTLAND | SEATTLE




RELATIONSHIP FOCUSED. RESULTS DRIVEN.

JUSTIN HOLMES

 253.447.2282

 justin@firstwesternproperties.com

JOSH PARNELL

 253.284.3630

 josh@firstwesternproperties.com

JUSTICE KNOX

 253.471.5501

 jknox@firstwesternproperties.com



First Western Properties—Tacoma Inc. | 253.472.0404
6402 Tacoma Mall Blvd, Tacoma, WA 98409 | fwp-inc.com

© First Western Properties, Inc. DISCLAIMER: The above information has been secured from sources believed to be reliable, however, no representations are made to its accuracy. Prospective tenants or buyers should consult their professional advisors and conduct their own independent investigation. Properties are subject to change in price and/or availability without notice.