

12TH AVE ARTS BUILDING SUBLEASE

1620 12th Avenue | Suite 201 | Seattle, WA



Suite 201:
3,288 SF total



In the heart
of Capitol Hill



Open floor plan
with kitchenette



Select furniture
available



Abundant
natural light



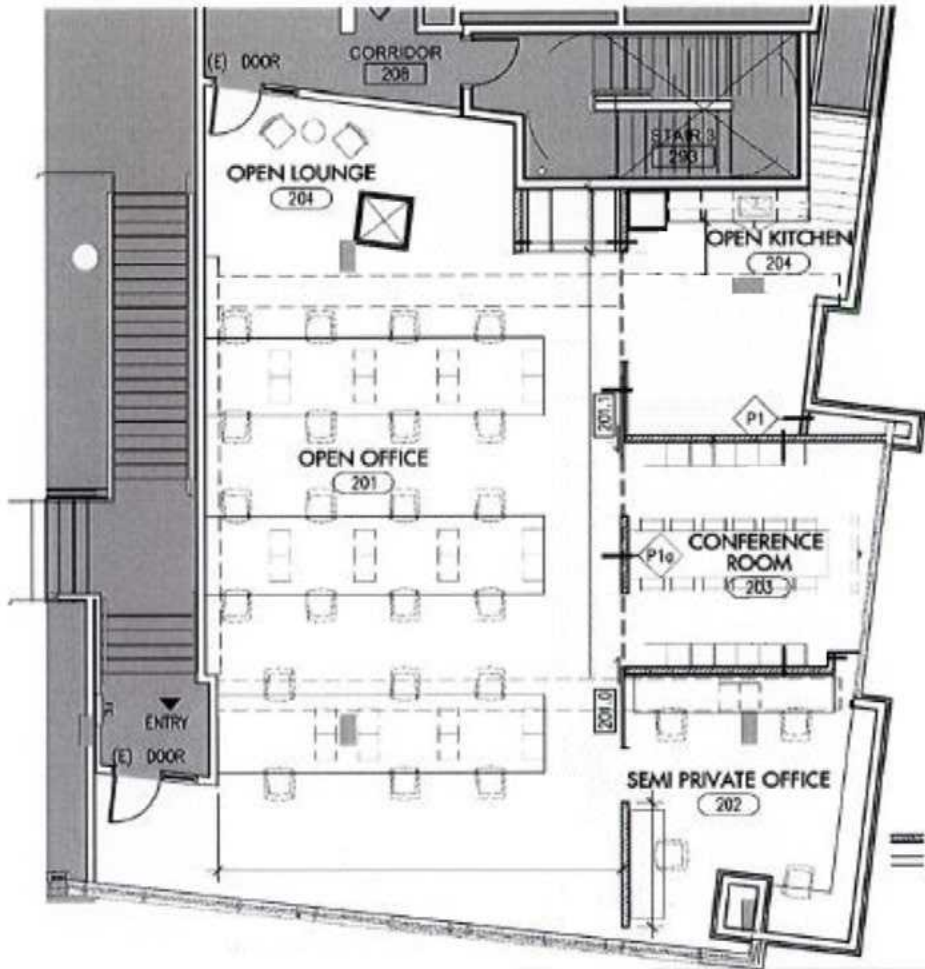
Available now
through 2/28/2030



12TH AVE ARTS BUILDING SUBLEASE

1620 12th Avenue | Suite 201 | Seattle, WA

TAKE A
VIRTUAL
TOUR



THE PERFECT LOCATION FOR A MODERN WORKFORCE

Capitol Hill is the densest neighborhood in Seattle, and accordingly, offers some of Seattle's best options for dining, shopping, nightlife, culture, and outdoor activities. It is one of only two in the city of Seattle that is accessible by bus, Light Rail, and Streetcar.



This document has been prepared by Colliers for advertising and general information only. Colliers makes no guarantees, representations or warranties of any kind, express or implied, regarding the information including but not limited to, warranties of content, accuracy and reliability. Any interested party should undertake their own inquiries as to the accuracy of the information. Colliers excludes unequivocally all inferred or implied terms, conditions and warranties arising out of this document and excludes all liability for loss and damages arising therefrom. This publication is the copyrighted property of Colliers and/or its licensor(s). © 2024. All rights reserved.

JOE CONNER
Senior Associate
Mob +1 425 698 7142
joe.conner@colliers.com

