

# 25 CENTRAL

Recently Refurbished  
Office Building in  
Downtown Kirkland  
w/ Lake Washington Views

**Lobby Level: 4,816 SF**  
**Available for Lease**



# 25 CENTRAL

IEWS OF

## Marina Park & Lake Washington

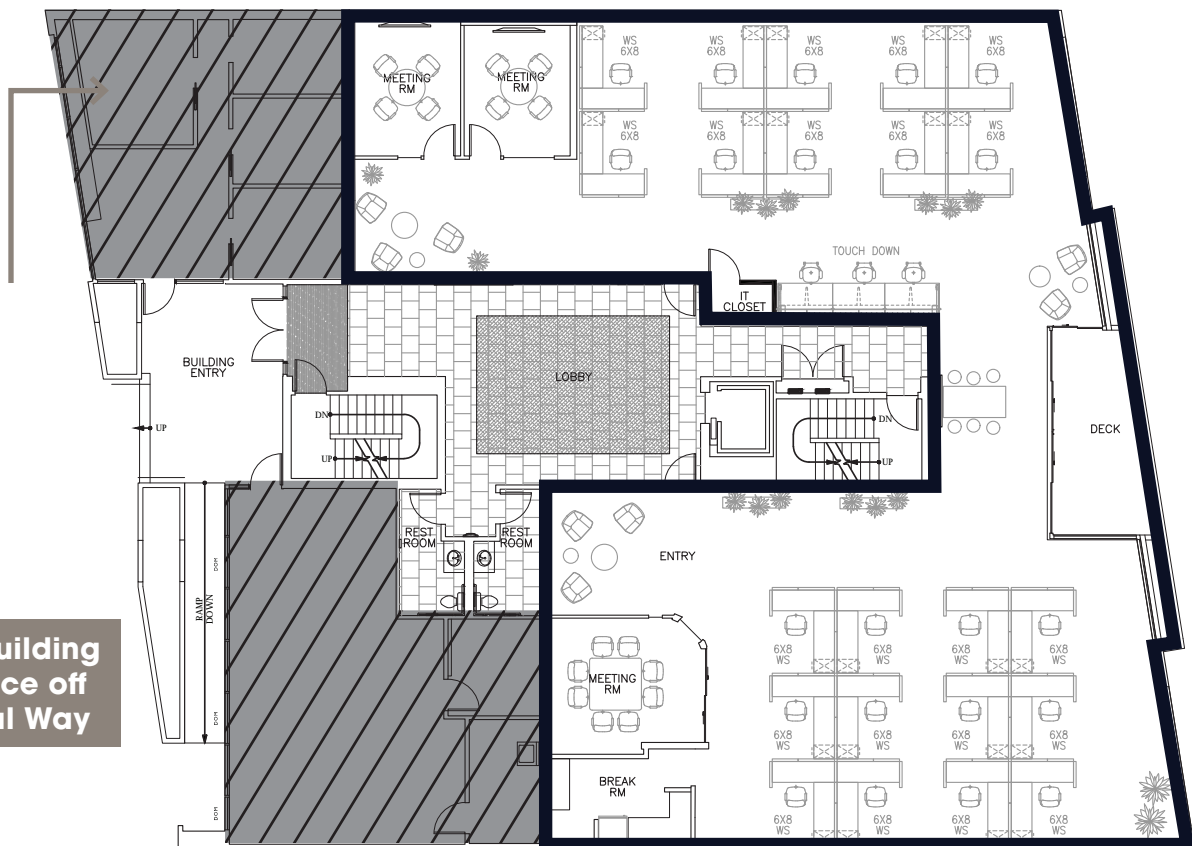
LOBBY  
LEVEL

RSF TOTAL  
4,816

- Lobby Level - 4,816 RSF (first floor space)
- Available now
- High visibility space located just off of the building lobby
- One meeting room, two private offices, large open area, break room, copy area and balcony deck with Lake Washington views

CENTRAL WAY

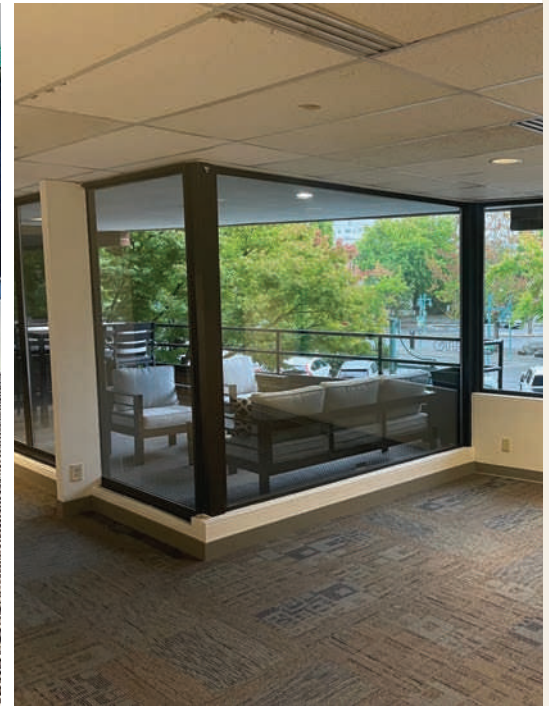
Main Building  
Entrance off  
Central Way



# 25 CENTRAL

INTERIOR

## Main Lobby & Suite



## BUILDING DETAILS

- Newly renovated building entrance, lobby and restrooms
- Marina Park and Lake Washington views
- Covered reserved parking spaces
- City of Kirkland parking available nearby
- Internet Providers: Comcast, Frontier, Allstream
- Easy walking to Kirkland retail shops and restaurants

**BRODERICK**  
• GROUP •

**JIM KINERK**  
(425) 646-5221  
[kinerk@broderickgroup.com](mailto:kinerk@broderickgroup.com)

**AL HODGE**  
(425) 646-5240  
[hodge@broderickgroup.com](mailto:hodge@broderickgroup.com)

The information contained herein has been given to us by the owner or sources which we deem reliable. We have no reason to doubt its accuracy, but we do not guarantee it. Prospective tenants should carefully verify all information contained herein.

# 25 CENTRAL

## NEARBY Amenities

