

## Evergreen Building

15 S Grady Way, Renton, WA 98057

### AVAILABLE SUITES

SUITE 200 - 8,254 RSF	SUITE 510 - 611 RSF
SUITE 249 - 1,346 RSF	SUITE 514 - 645 RSF
SUITE 300 - 1,686 RSF	SUITE 522 - 784 RSF
SUITE 315 - 584 RSF	SUITE 618 - 2,126 RSF*
SUITE 330 - 2,783 RSF	SUITE 620 - 1,622 RSF*
SUITE 409 - 1,017 RSF	SUITE 622 - 1,380 RSF*
SUITE 410 - 1,391 RSF	SUITE 634 - 680 RSF

\*Can be combined for 5,128 RSF

- 6-story high-rise in excellent location
- Convenient access to I-405, SR-167 and I-5
- Ample parking, at 4/1000 SF, across the street from South Renton Park & Ride
- On-site property management & conference rooms
- Nearby retail amenities at Renton Village
- Rental Rate: \$28.50 to \$29.50 per RSF, Full Service



**Mike George**  
Partner | 425.586.5618  
mgeorge@nai-psp.com

**Tony Rona**  
Vice President | 425.586.5634  
trona@nai-psp.com



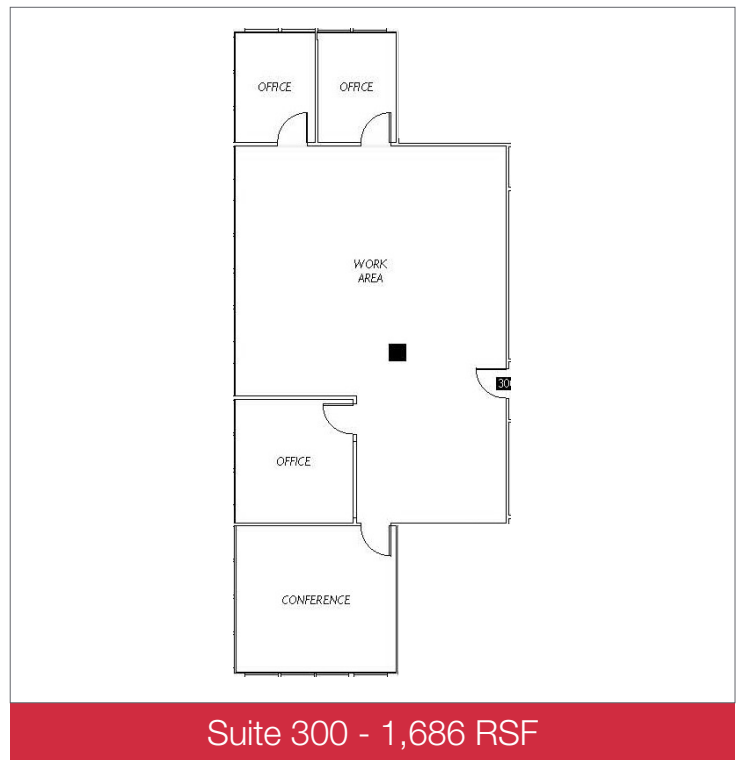
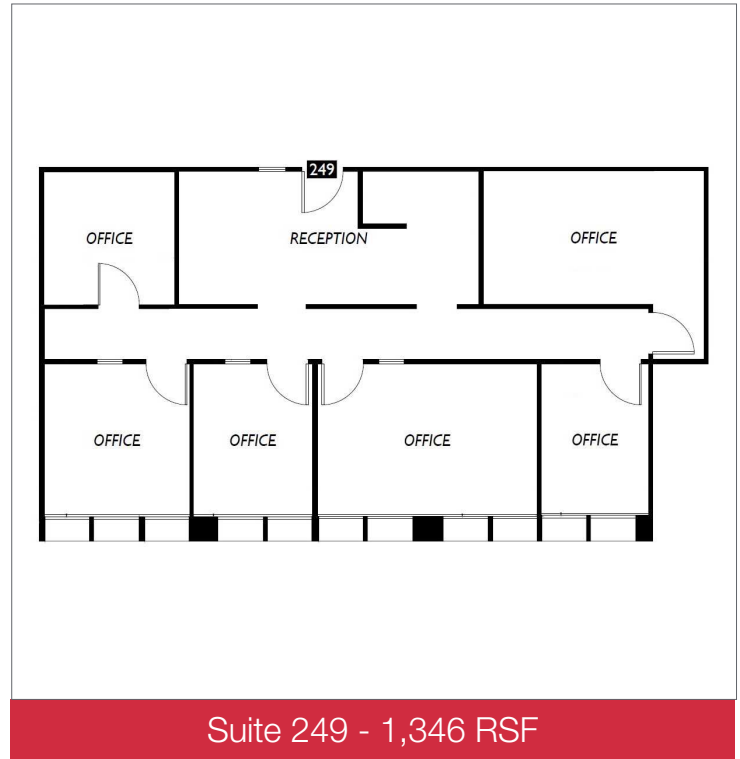
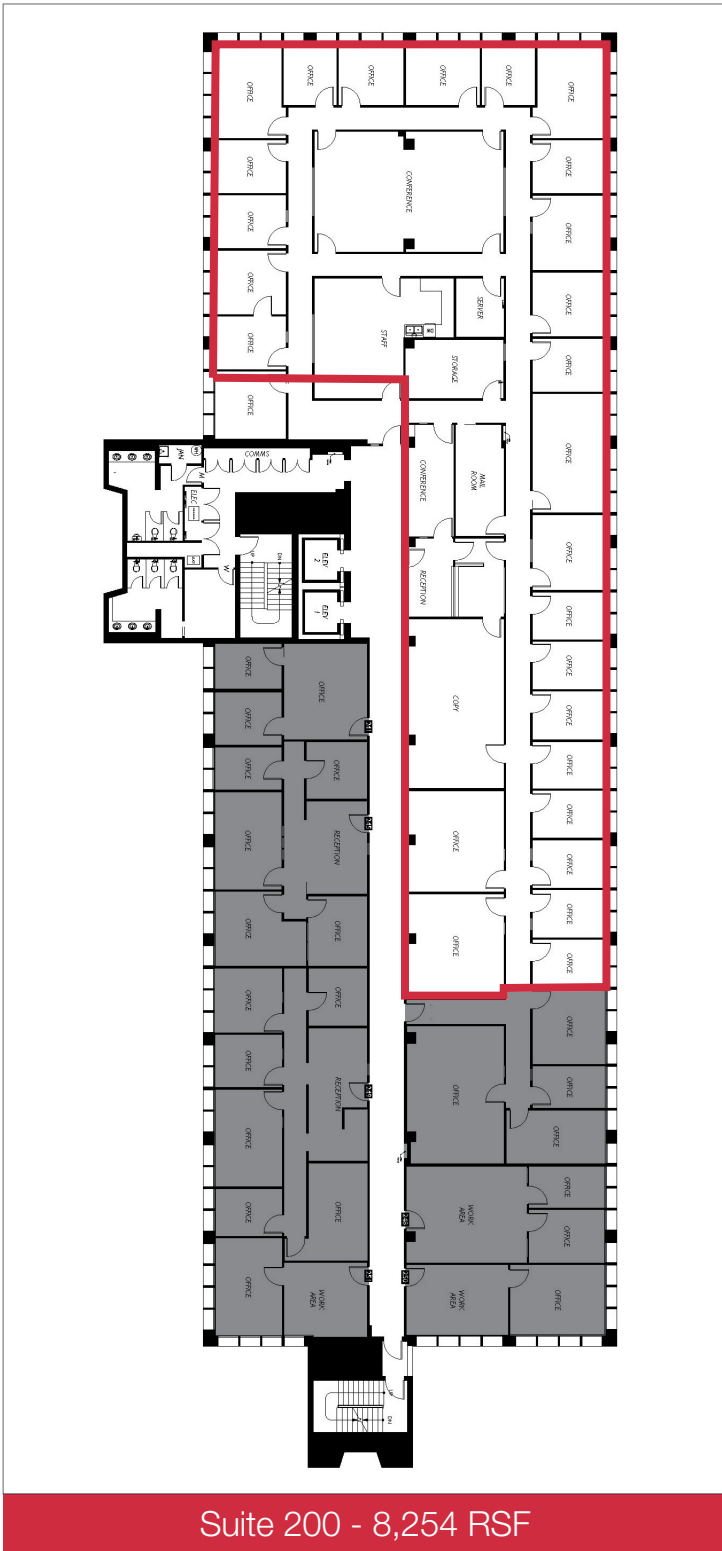
FOR LEASE



PROFESSIONAL OFFICE



611 - 9,243 SF



**Mike George**  
Partner | 425.586.5618  
mgeorge@nai-psp.com

**Tony Rona**  
Vice President | 425.586.5634  
trona@nai-psp.com



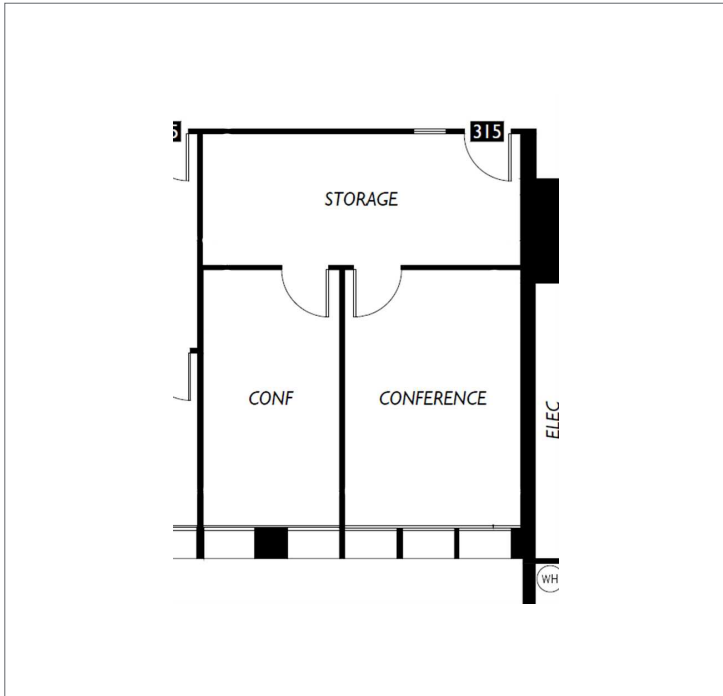
FOR LEASE



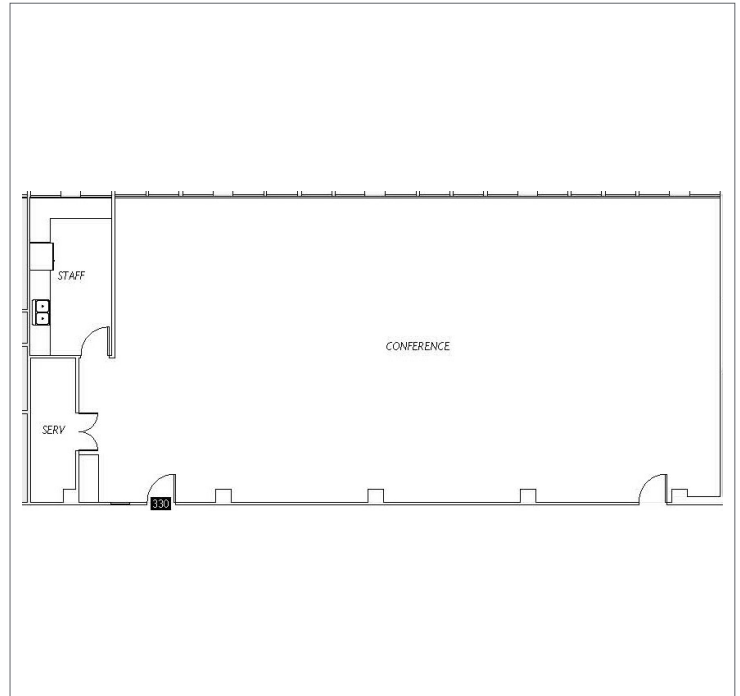
PROFESSIONAL OFFICE



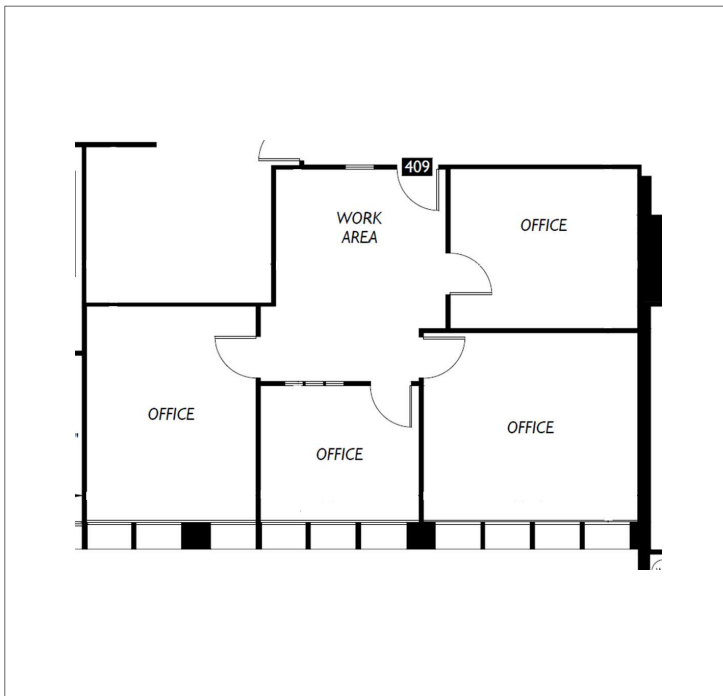
611 - 9,243 SF



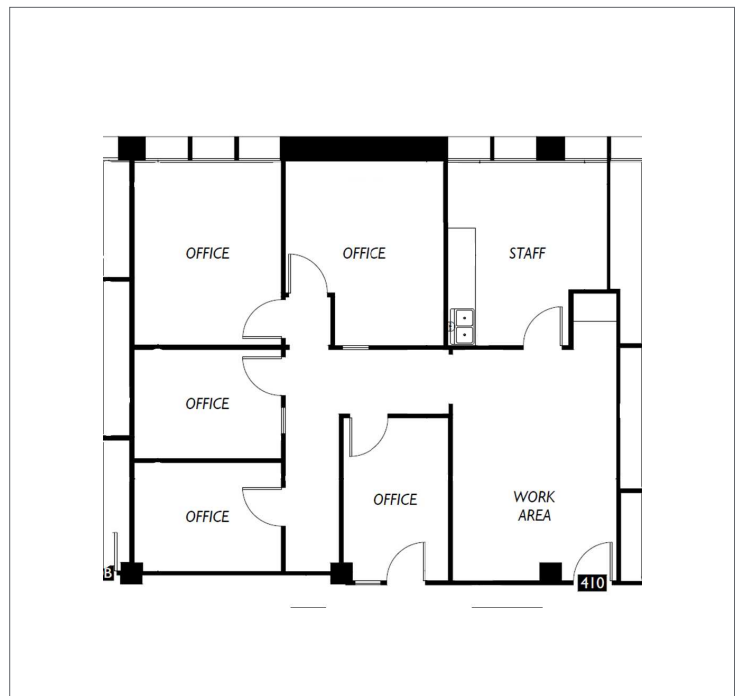
Suite 315 - 584 RSF



Suite 330 - 2,783 RSF



Suite 409 - 1,017 RSF



Suite 410 - 1,391 RSF



**Mike George**  
Partner | 425.586.5618  
mgeorge@nai-psp.com

**Tony Rona**  
Vice President | 425.586.5634  
trona@nai-psp.com



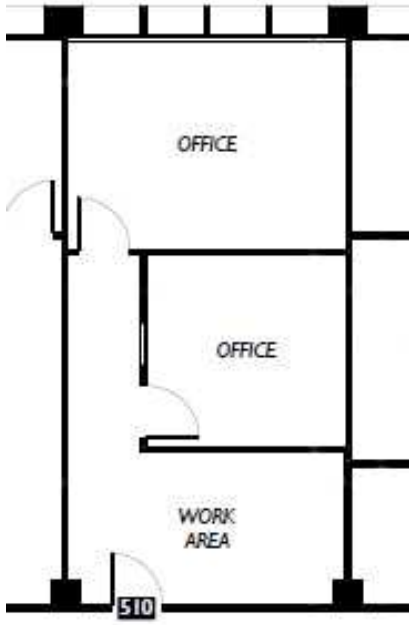
FOR LEASE



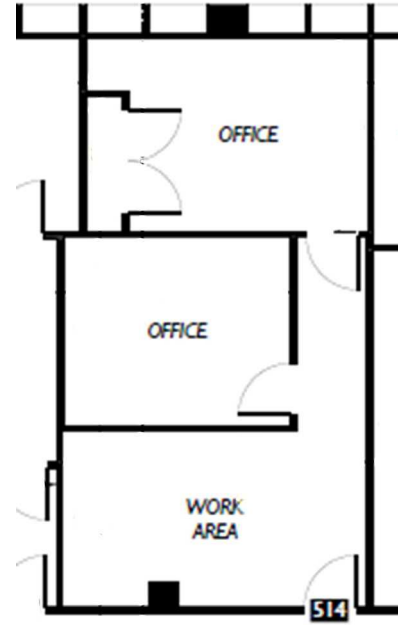
PROFESSIONAL OFFICE



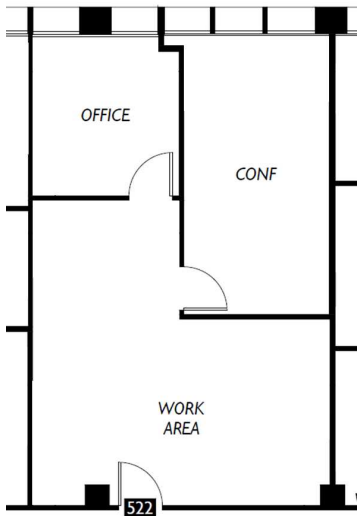
611 - 9,243 SF



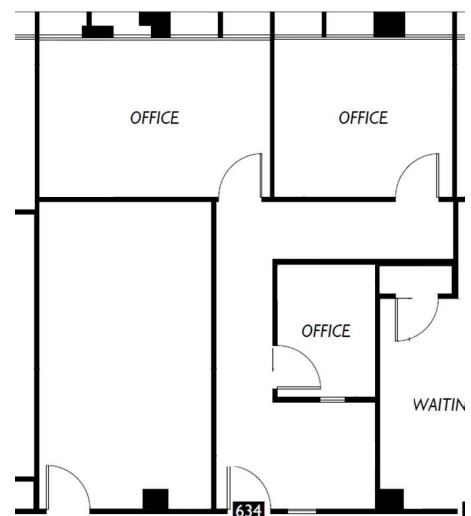
Suite 510 - 611 RSF



Suite 514 - 645 RSF



Suite 522 - 784 RSF



Suite 634 - 680 RSF



**Mike George**  
Partner | 425.586.5618  
mgeorge@nai-psp.com

**Tony Rona**  
Vice President | 425.586.5634  
trona@nai-psp.com



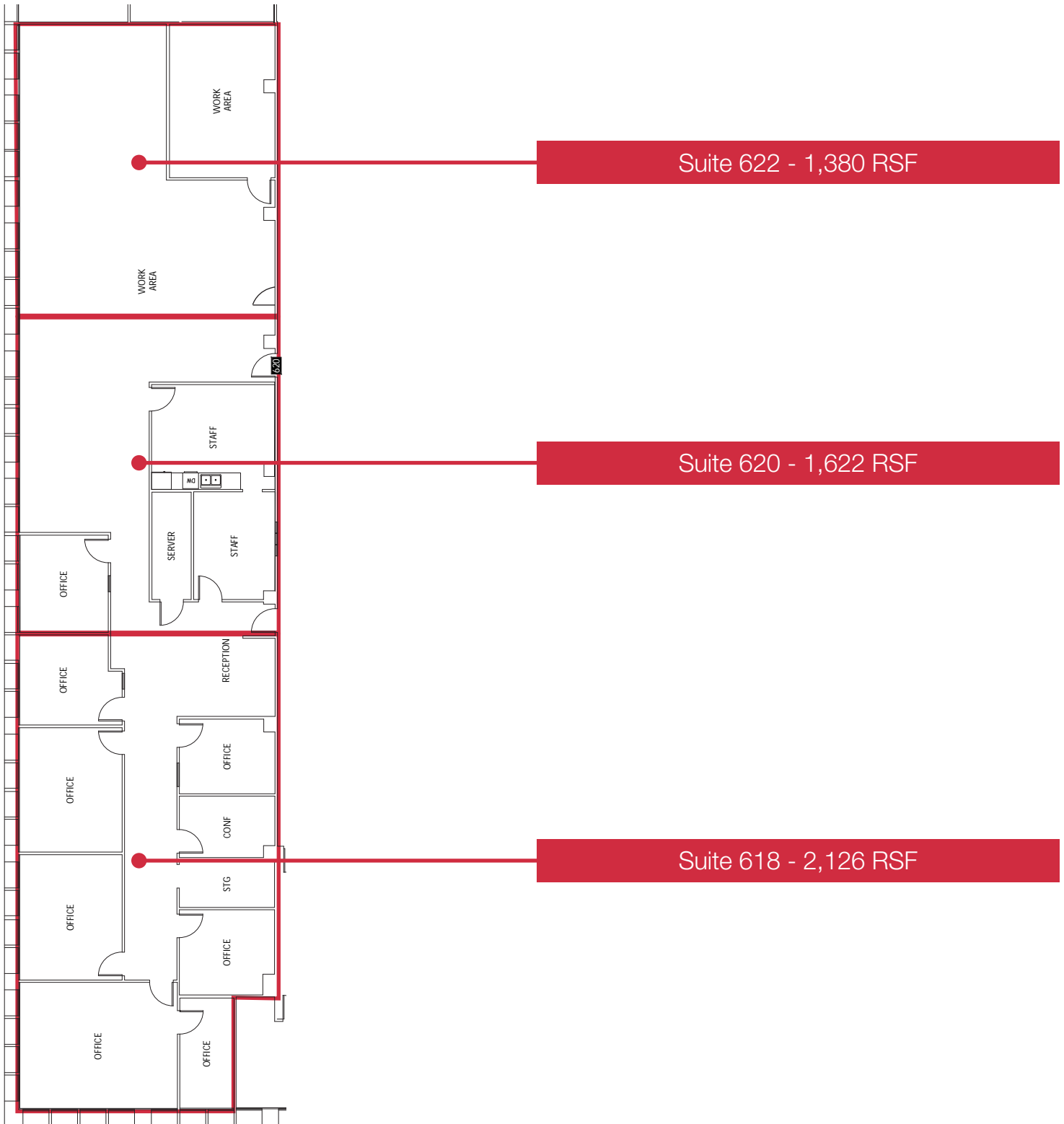
FOR LEASE



PROFESSIONAL OFFICE



611 - 9,243 SF



**Mike George**  
Partner | 425.586.5618  
mgeorge@nai-psp.com

**Tony Rona**  
Vice President | 425.586.5634  
trona@nai-psp.com



FOR LEASE



PROFESSIONAL OFFICE



611 - 9,243 SF



**Mike George**  
Partner | 425.586.5618  
mgeorge@nai-psp.com

**Tony Rona**  
Vice President | 425.586.5634  
trona@nai-psp.com



FOR LEASE



PROFESSIONAL OFFICE



611 - 9,243 SF



**Mike George**  
Partner | 425.586.5618  
mgeorge@nai-psp.com

**Tony Rona**  
Vice President | 425.586.5634  
trona@nai-psp.com