

FOR SUBLEASE

# 720 S FOREST ST

SEATTLE, WA



## *SODO shop with yard available now*

- 11,500 SF building
- 5,160 SF garage/service
- 3,150 SF parts storage
- 3,200 SF office

---

20' clear height

---

Five oversized 16' drive-in doors

---

43,200 SF total land

---

25,000 SF yard, divisible

---

Fenced & lit

---

Asking rates:

- \$1.50/Building SF, mo. + NNN
- \$0.65/Yard SF, mo. + NNN

---

Sublease through 7/31/2028

---

---

**43.2K**

SF LAND

---

**NOW**

AVAILABLE

**JIM KIDDER, SIOR**  
206.248.7328  
jim.kidder@kidder.com

**NICK RAMIREZ**  
206.248.6521  
nick.ramirez@kidder.com

**KIDDER.COM**

This information supplied herein is from sources we deem reliable. It is provided without any representation, warranty, or guarantee, expressed or implied as to its accuracy. Prospective Buyer or Tenant should conduct an independent investigation and verification of all matters deemed to be material, including, but not limited to, statements of income and expenses. Consult your attorney, accountant, or other professional advisor.

**km Kidder Mathews**

FOR SUBLEASE



25,000 SF

YARD

\$0.65/SF

YARD LEASE RATE

NOW

AVAILABLE

JIM KIDDER, SIOR 206.248.7328 | jim.kidder@kidder.com

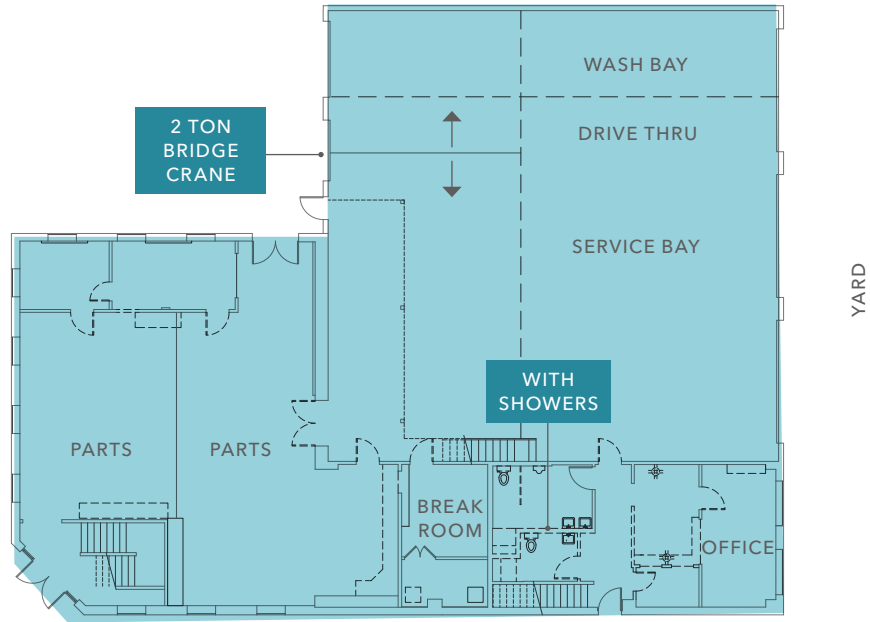
NICK RAMIREZ 206.248.6521 | nick.ramirez@kidder.com

KIDDER.COM

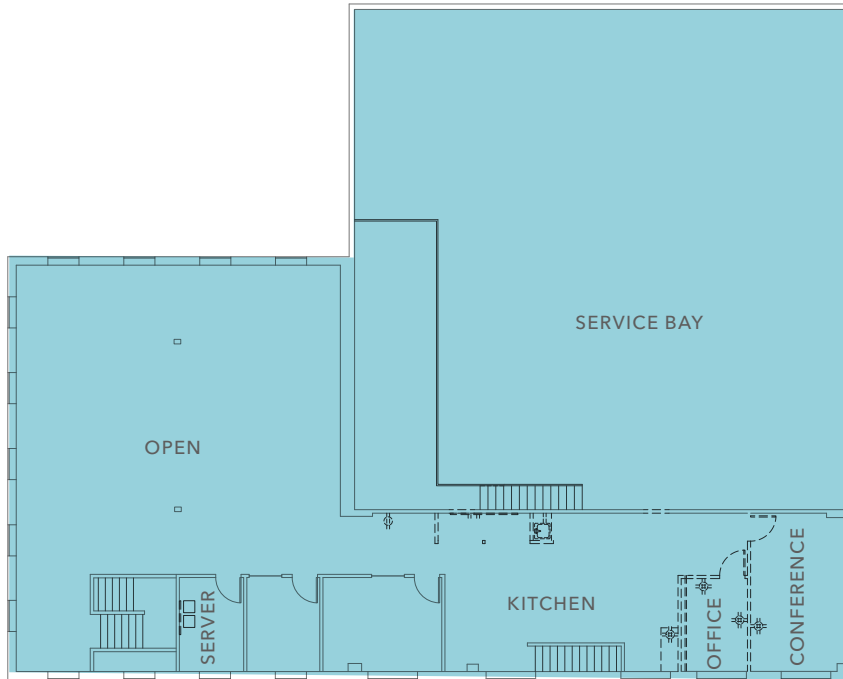
This information supplied herein is from sources we deem reliable. It is provided without any representation, warranty, or guarantee, expressed or implied as to its accuracy. Prospective Buyer or Tenant should conduct an independent investigation and verification of all matters deemed to be material, including, but not limited to, statements of income and expenses. Consult your attorney, accountant, or other professional advisor.



1ST FLOOR PLAN



2ND FLOOR PLAN



JIM KIDDER, SIOR  
206.248.7328  
jim.kidder@kidder.com

NICK RAMIREZ  
206.248.6521  
nick.ramirez@kidder.com

KIDDER.COM

This information supplied herein is from sources we deem reliable. It is provided without any representation, warranty, or guarantee, expressed or implied as to its accuracy. Prospective Buyer or Tenant should conduct an independent investigation and verification of all matters deemed to be material, including, but not limited to, statements of income and expenses. Consult your attorney, accountant, or other professional advisor.

FOR SUBLEASE



*11,500 SF*

BUILDING

*\$1.50/SF*

BUILDING LEASE RATE

*NOW*

AVAILABLE



[KIDDER.COM](http://KIDDER.COM)

This information supplied herein is from sources we deem reliable. It is provided without any representation, warranty, or guarantee, expressed or implied as to its accuracy. Prospective Buyer or Tenant should conduct an independent investigation and verification of all matters deemed to be material, including, but not limited to, statements of income and expenses. Consult your attorney, accountant, or other professional advisor.

