

OFFICE FOR LEASE
FREMONT VILLAGE SQUARE

3601 FREMONT AVENUE N, SEATTLE, WA 98103

FREMONT VILLAGE SQUARE

fremont
animal hospital

For more information please contact:

LAURA MILLER
laura@gibraltarusa.com
206.351.3573

 GIBRALTAR
INVESTMENT PROPERTY SOLUTIONS

3601 FREMONT AVENUE N, SEATTLE, WA 98103

FREMONT VILLAGE SQUARE



"THE CENTER OF THE UNIVERSE"

One of Seattle's most vibrant neighborhoods, Fremont, aka "Center of the Universe" is a hot spot for indie shops, first class restaurants and bars, trendy coffee shops and a large amount of public waterfront access. Strong pedestrian and vehicle traffic, synergistic Building co-tenants, and very close proximity to employment giants Tableau Software, Adobe Systems, Getty Images, and Brook's Headquarters make this an ideal location for a vibrant retailer.

PROPERTY HIGHLIGHTS

- Office space on bustling Fremont Avenue, two blocks north of Fremont Bridge
- Building co-tenants include Shawn O'Donnell's Irish Pub, MTI Physical Therapy, Ancient Healing Arts, Fremont Dental, Fremont Animal Hospital, and Hilltop Children's Center
- Parking ratio of 1.2/1,000 SF in Building garage at \$225/month
- 8 minute drive to the University District, 12 minute drive to downtown Seattle
- Proximity to celebrated restaurants and an ever-growing variety of cafes and eateries
- Dedicated bike lanes to downtown Seattle and South Lake Union
- Easy access to major east-west and north-south arterials

3601 FREMONT AVENUE N, SEATTLE, WA 98103

FREMONT VILLAGE SQUARE



AVAILABLE

SUITE	SIZE (SF)	NNN (EST. 2024)	BASE RENT	DESCRIPTION
Suite 209	1,089 SF	\$14.23	\$32.00 SF/yr	Available November 1, 2024. Main-level suite features 4 private offices and shared deck with direct lobby access, common area restrooms. Ideal for massage therapy, physical therapy, psychologist, or general office.
Suite 309	3,582 SF	\$14.23	\$32.00 SF/yr	West-facing creative office features modern finishes, great natural light, large outdoor deck, and kitchen. Divisible to 1,408 SF / 2,174 SF.
Suite 414	3,736 SF	\$14.23	\$32.00 SF/yr	Top floor, west-facing creative office. Light-filled space features open floorplan with 3 conference rooms, kitchen/break room, and in-suite ADA restroom.

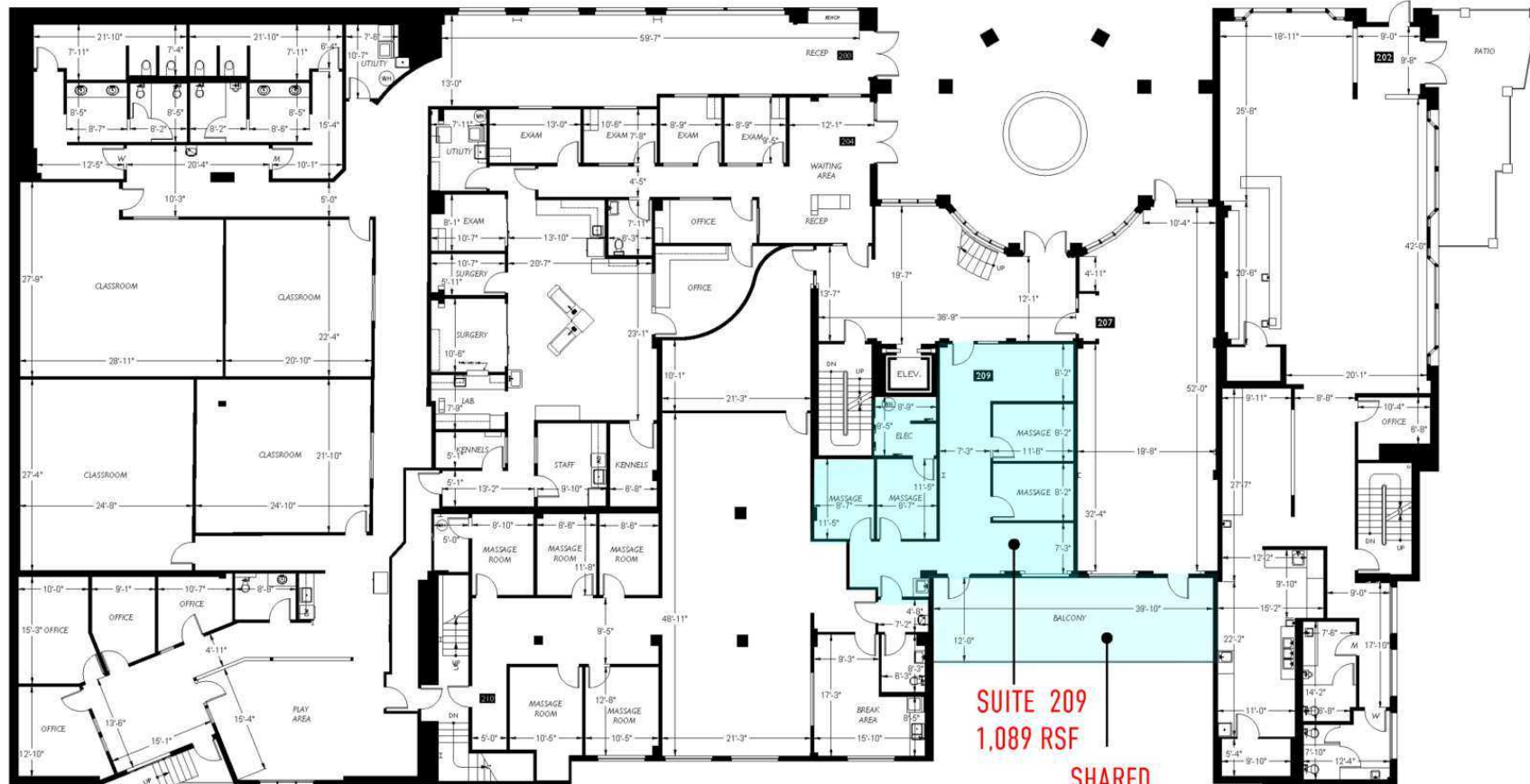
NNN includes water, sewer, trash and electricity.

3601 FREMONT AVENUE N, SEATTLE, WA 98103

FREMONT VILLAGE SQUARE



Adjacent Building



SUITE 209
1,089 RSF

SHARED
DECK

Adjacent Building

Adjacent Building

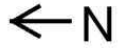
Alley



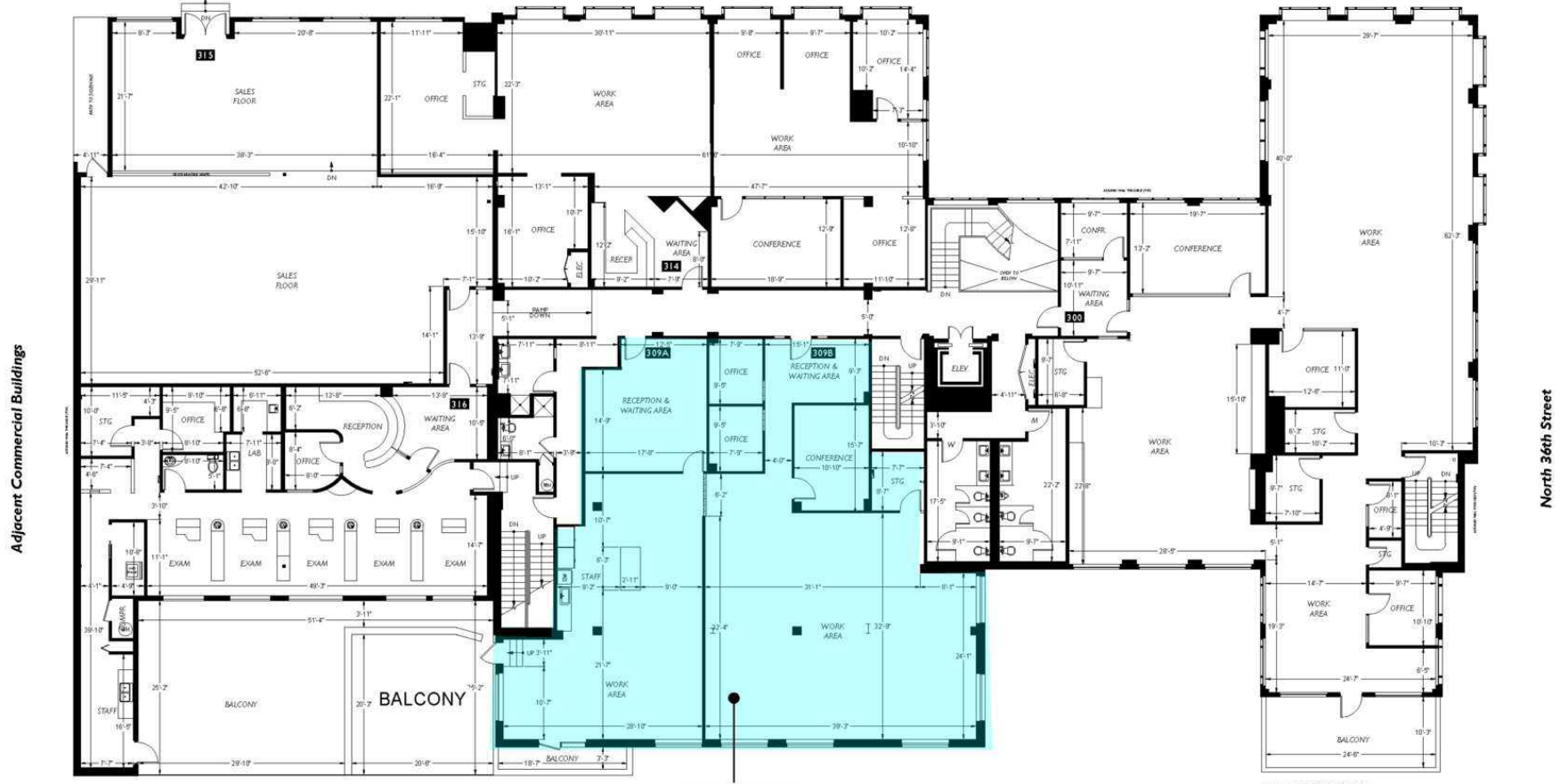
Scale: 1/16" = 1'-0"

3601 FREMONT AVENUE N, SEATTLE, WA 98103

FREMONT VILLAGE SQUARE



Fremont Avenue North



SUITE 309
3,582 RSF

Alleyway



Scale: 1/16" = 1'-0"

3601 FREMONT AVENUE N, SEATTLE, WA 98103

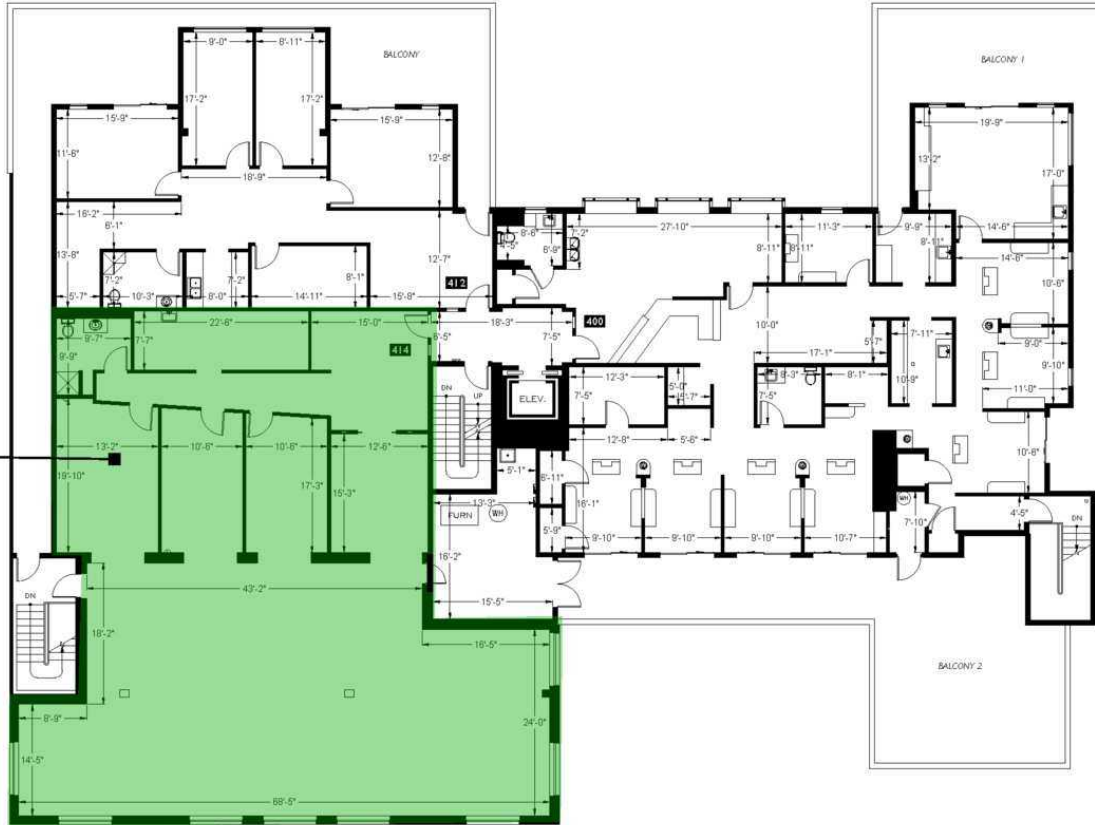
FREMONT VILLAGE SQUARE



Fremont Avenue North

Adjacent Building

SUITE 414
3,736 RSF



Adjacent Building

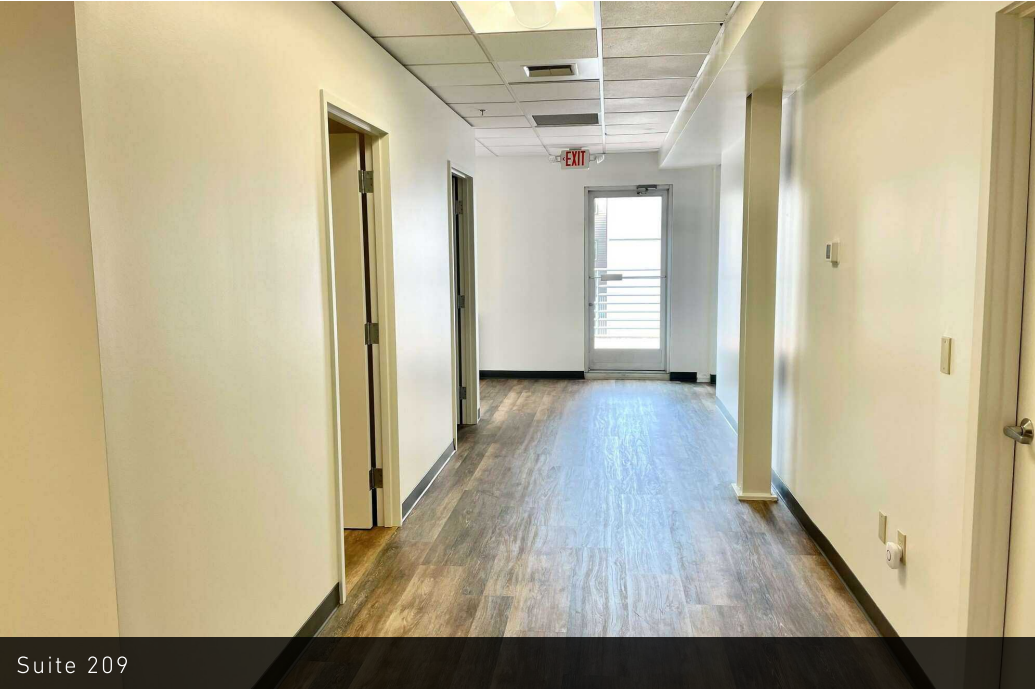
Alley



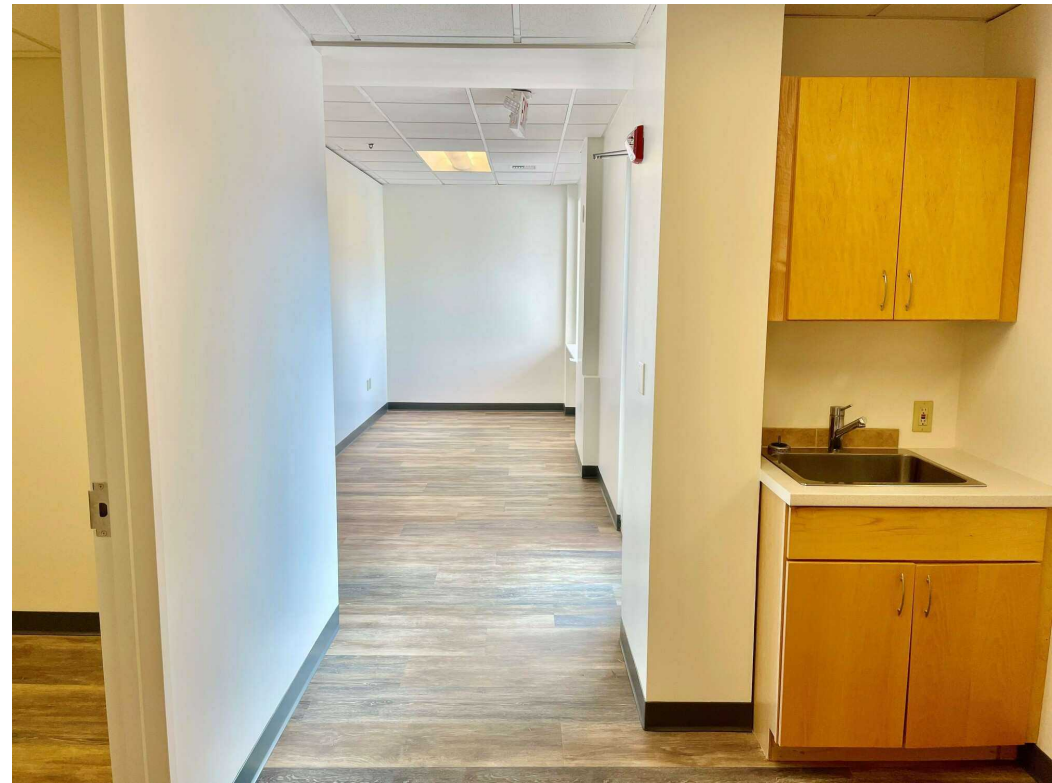
Scale: 1/16" = 1'-0"

3601 FREMONT AVENUE N, SEATTLE, WA 98103

FREMONT VILLAGE SQUARE



Suite 209



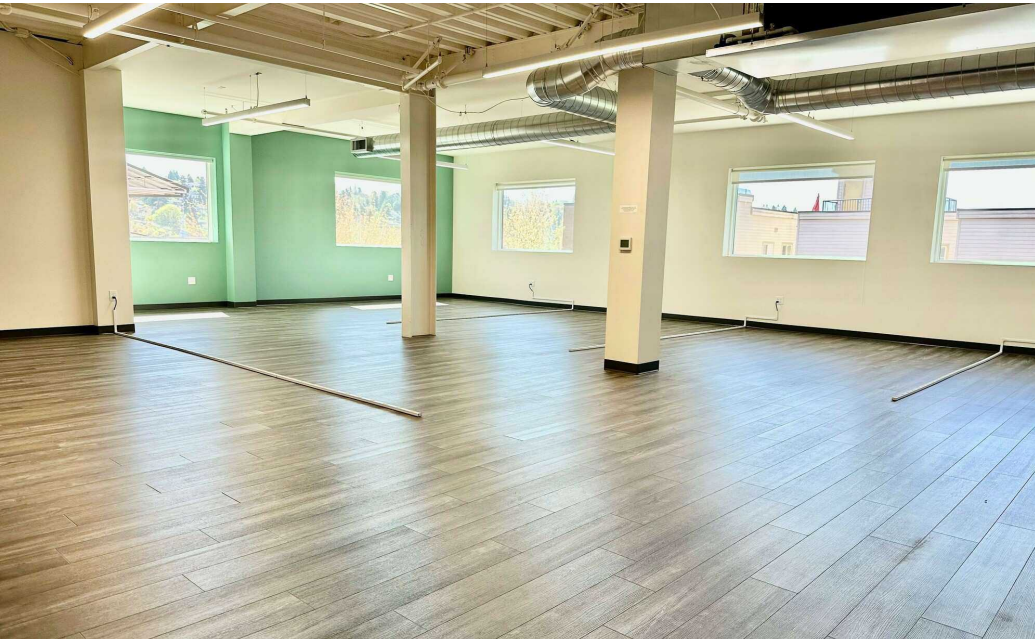
Suite 209



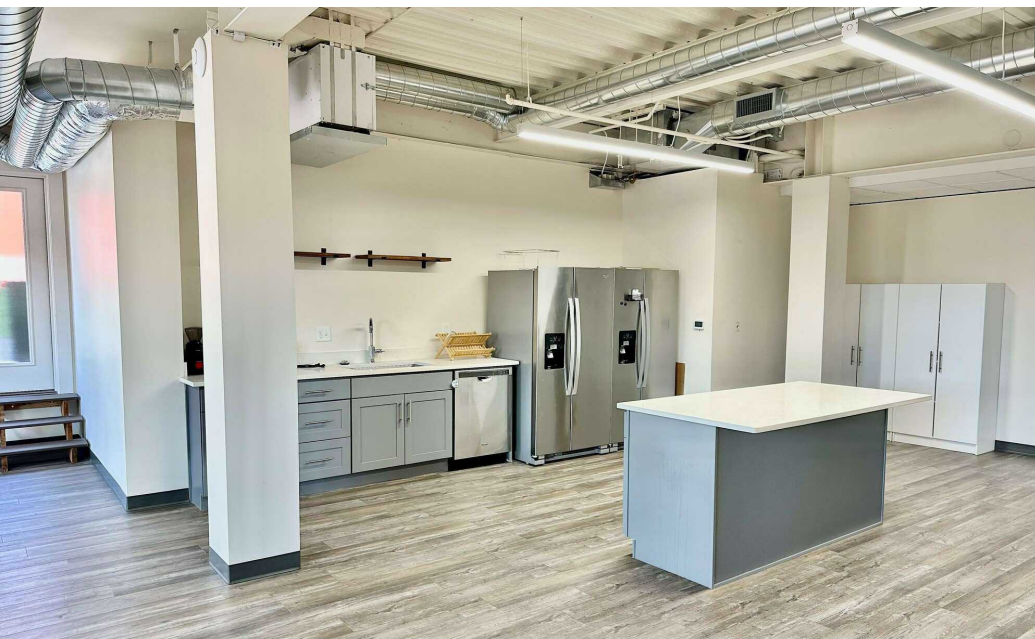
Suite 209

3601 FREMONT AVENUE N, SEATTLE, WA 98103

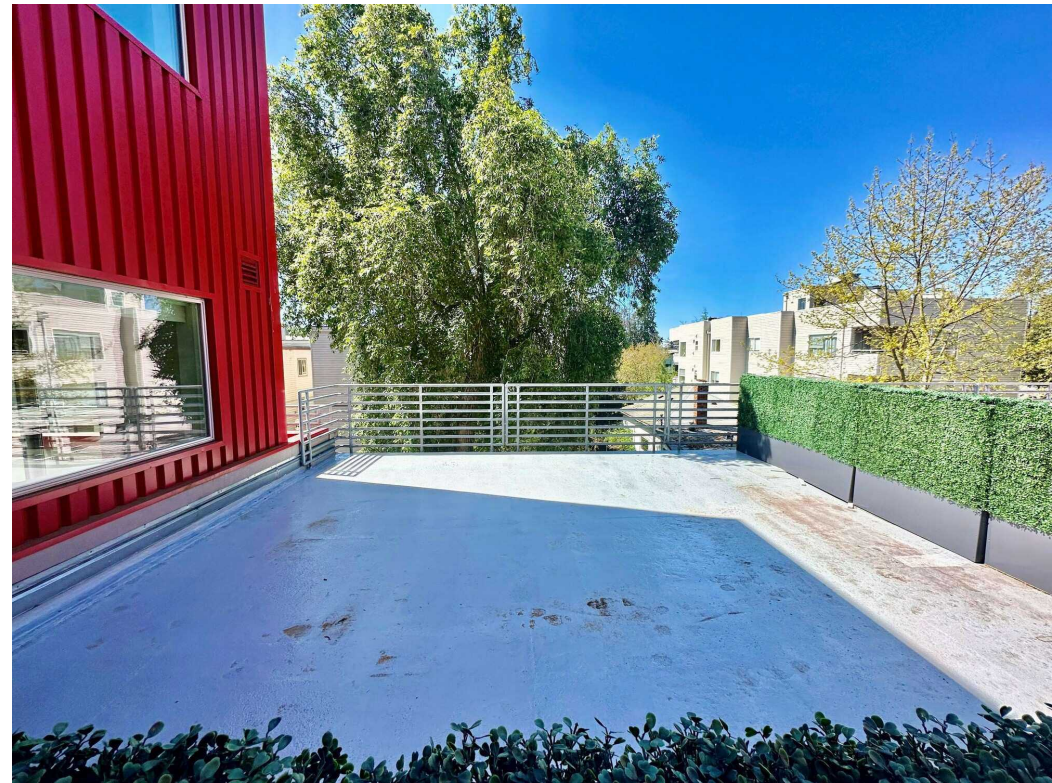
FREMONT VILLAGE SQUARE



Suite 309



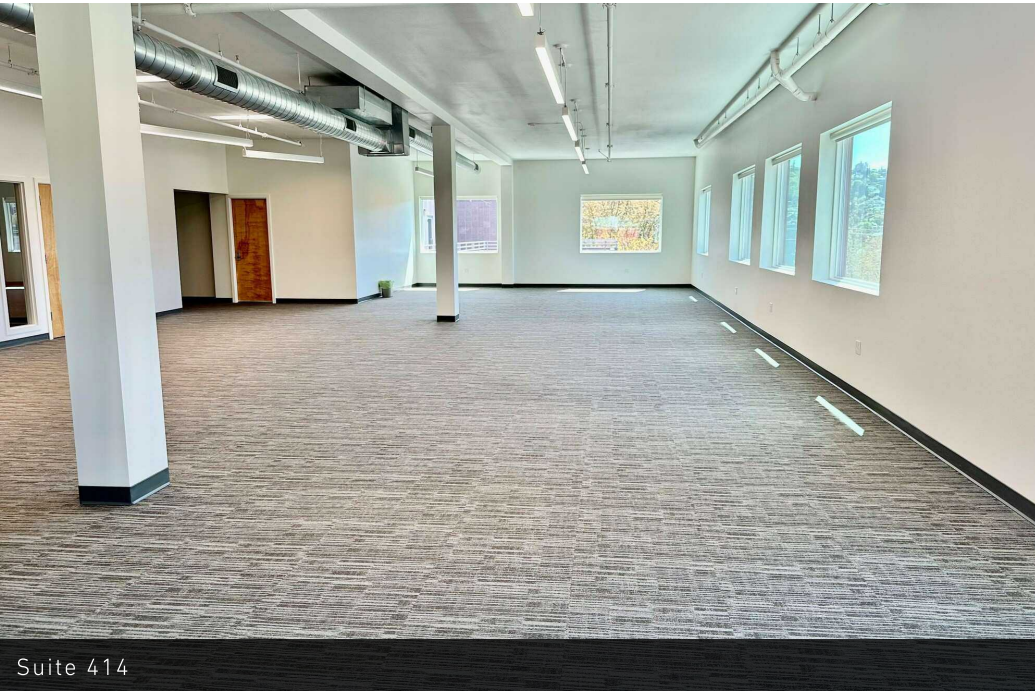
Suite 309 kitchen



Suite 309 balcony

3601 FREMONT AVENUE N, SEATTLE, WA 98103

FREMONT VILLAGE SQUARE



Suite 414



Suite 414



Suite 414 kitchen

3601 FREMONT AVENUE N, SEATTLE, WA 98103

FREMONT VILLAGE SQUARE



63

TRANSIT SCORE



98

WALK SCORE



82

BIKE SCORE



148,526

POPULATION



72,194

HOUSEHOLDS



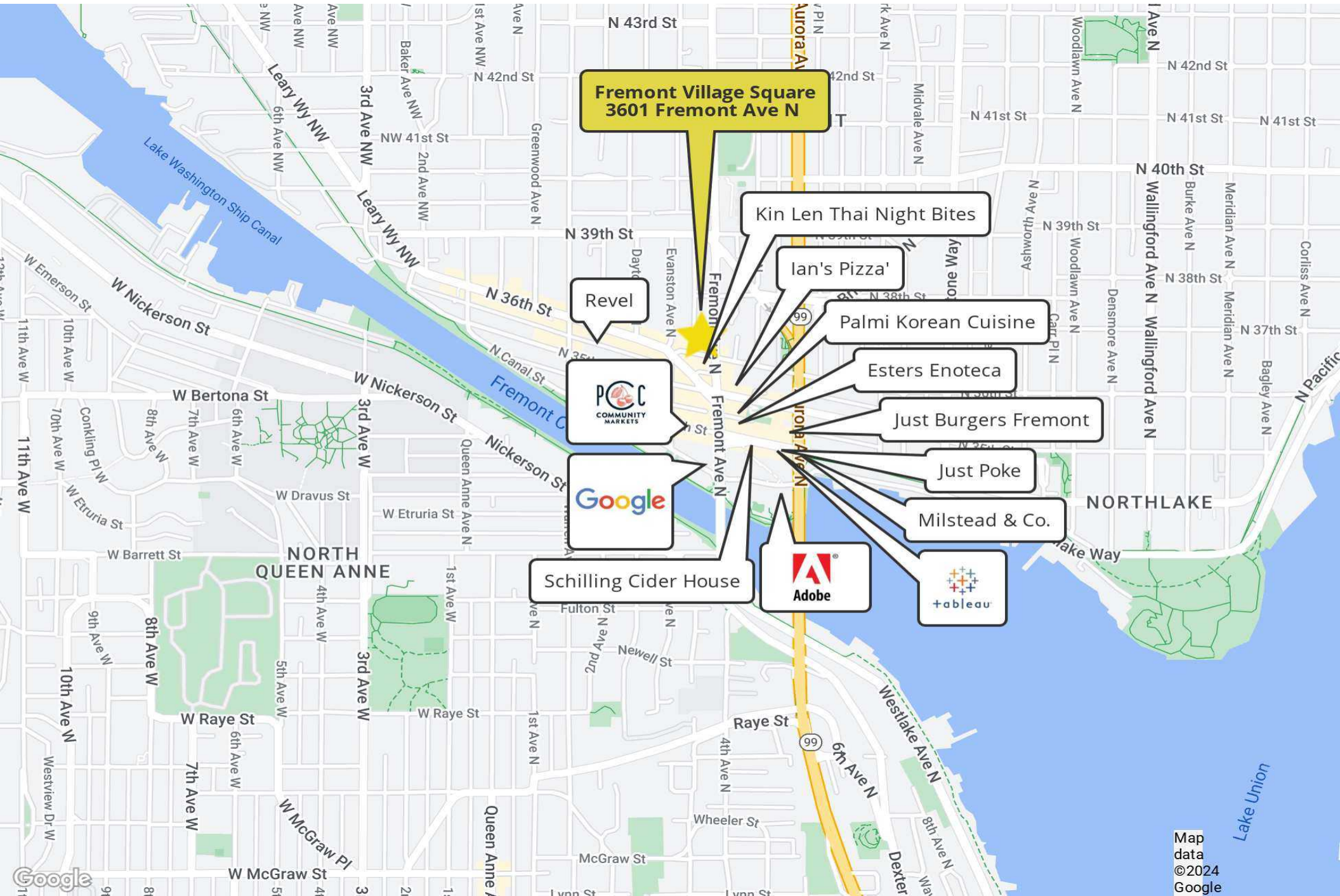
\$109,165

HOUSEHOLD INCOME

* Estimated 2023 demographics based on a 2 mile radius

3601 FREMONT AVENUE N, SEATTLE, WA 98103

FREMONT VILLAGE SQUARE



Fremont Village Square
3601 Fremont Ave N

Kin Len Thai Night Bites

Ian's Pizza'

Palmi Korean Cuisine

Esters Enoteca

Just Burgers Fremont

Just Poke

Milstead & Co.

Revel



Schilling Cider House

