

**OFFICE LEASE  
AVAILABLE**



# MEADOW CREEK OFFICE PARK

22500 - 22619 SE 64th Place | Issaquah, WA

**Brian Stewart**

425.289.2222

brians@rosenharbottle.com

425.454.3030  
rosenharbottle.com

PO Box 5003  
Bellevue, WA 98009 - 5003







# ISSAQUAH CLASS A OFFICE SPACES AVAILABLE

**1,440 SF - 3,015 SF Available**

## OFFICE PARK DETAILS:

- Minutes from Costco Headquarters
- Amazing Location off I-90 at Front St/E Lake Sammamish Pkwy
- Nearby Amenities Include Retailers, Grocers, Restaurants, Hospital & Parks
- Park-Like, Campus Setting with Free Surface Parking

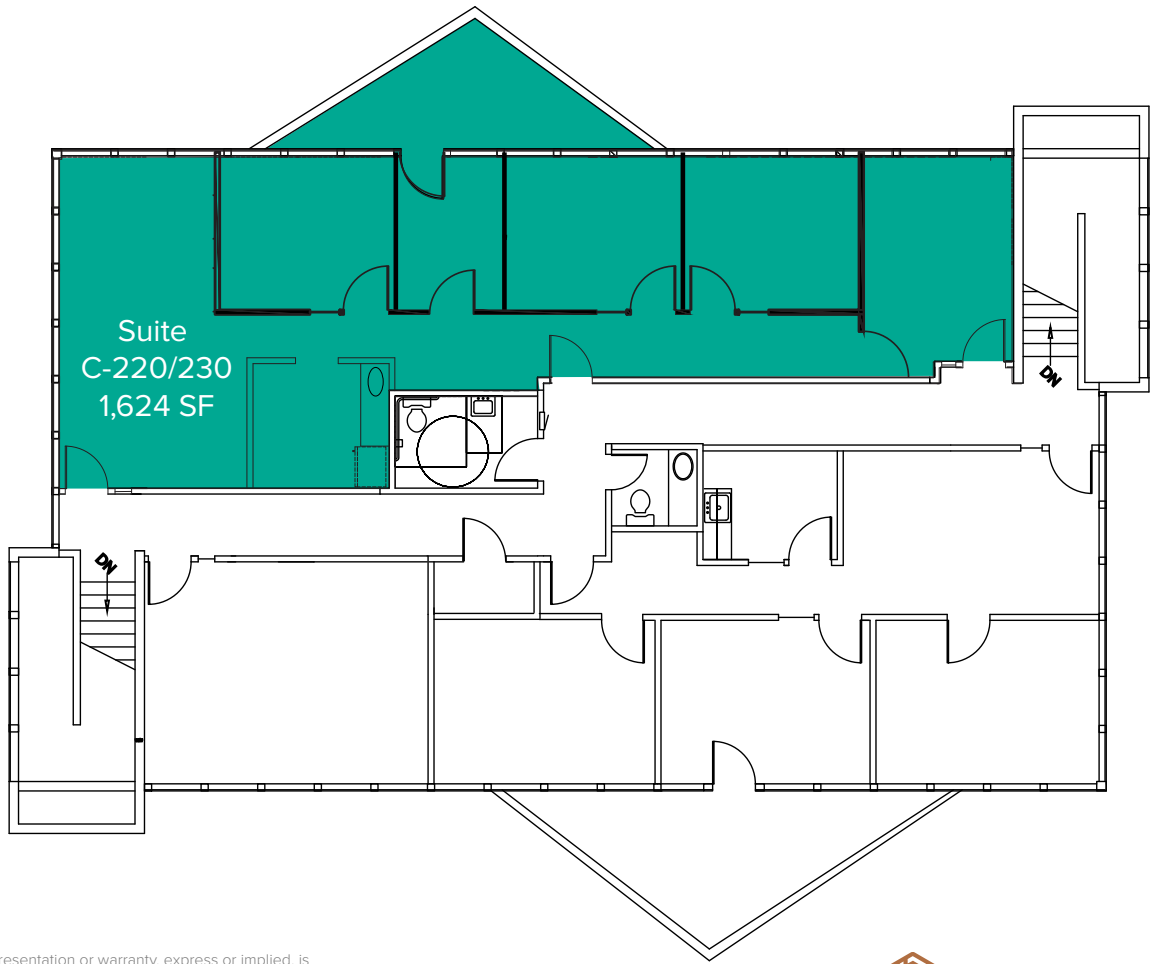
The information provided herein has been obtained from sources believed to be reliable, but no representation or warranty, express or implied, is made with respect to the accuracy or completeness of any such information. Each prospective buyer or tenant should independently investigate, evaluate and verify all information provided herein and any other matters deemed material. Please consult your attorney, tax advisor or other professional advisor. The terms of sale or lease set forth herein are subject to change or withdrawal at any time and without notice.

# BUILDING C (22530) SECOND LEVEL FLOOR PLAN

Suite	Square Feet	Rate
C 220/230	1,624 SF	\$29.00/SF, NNN

Second floor office space with 3 private offices, conference room, break room, copy area, reception, and private balcony.

**Available Now.**

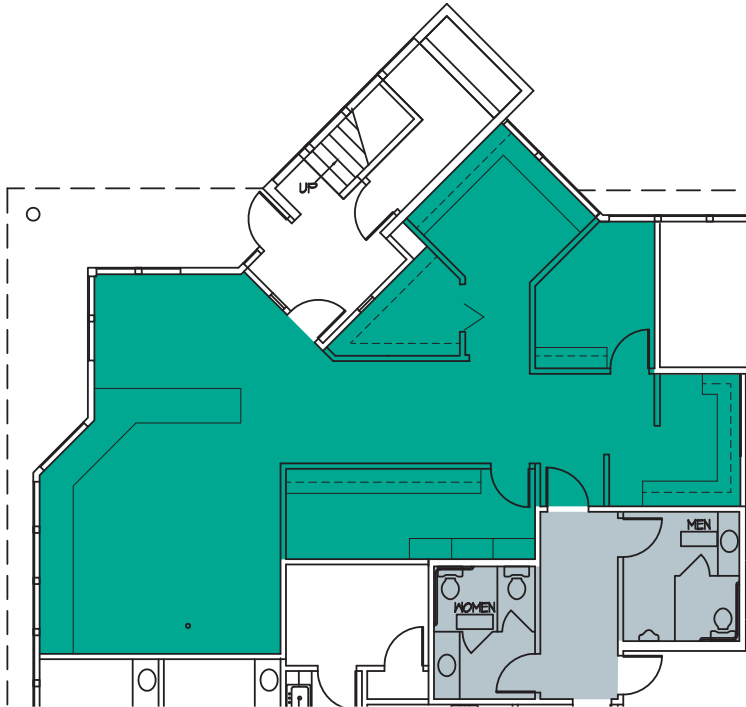


The information provided herein has been obtained from sources believed to be reliable, but no representation or warranty, express or implied, is made with respect to the accuracy or completeness of any such information. Each prospective buyer or tenant should independently investigate, evaluate and verify all information provided herein and any other matters deemed material. Please consult your attorney, tax advisor or other professional advisor. The terms of sale or lease set forth herein are subject to change or withdrawal at any time and without notice.

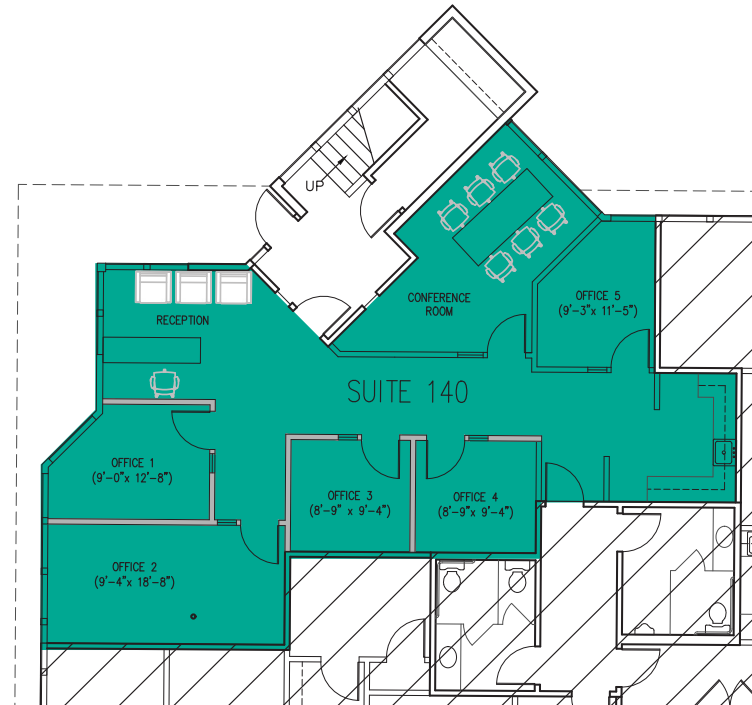
# BUILDING D (22526)

## FIRST LEVEL FLOOR PLAN

Suite	Square Feet	Rate	Notes
D-140 (As-Is Plan)	1,440 SF	\$28.00/SF, NNN	First floor office with 1 private room, reception area, break room, and open work space. <b>Available Now.</b>
D-140 (Sample Plan)	1,440 SF	\$28.00/SF, NNN	First floor office with 5 private offices, 1 conference room, reception area, and break area with a kitchenette.



**Suite D-140**  
1,440 SF  
**As-Is Floor Plan**



**Suite D-140**  
1,440 SF  
**Sample Floor Plan**

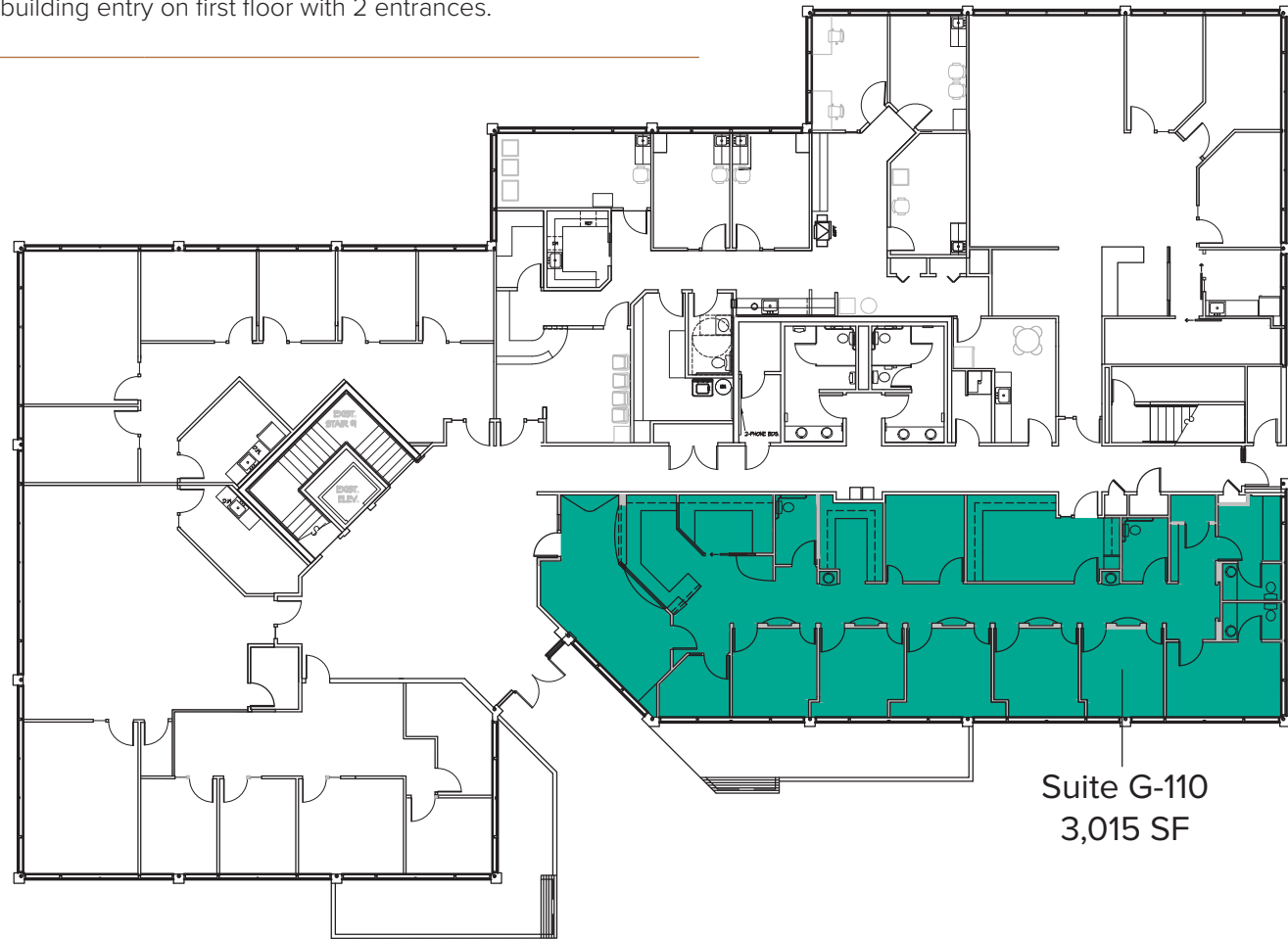


# BUILDING G (22500) FIRST LEVEL FLOOR PLAN

Suite	Square Feet	Rate
G-110	3,015 SF	\$35.00/SF, NNN

First floor former dental office with plumbing throughout. Includes private rooms, reception area, break room and restrooms. Located right off main building entry on first floor with 2 entrances.

**Available 5/1/2025.**

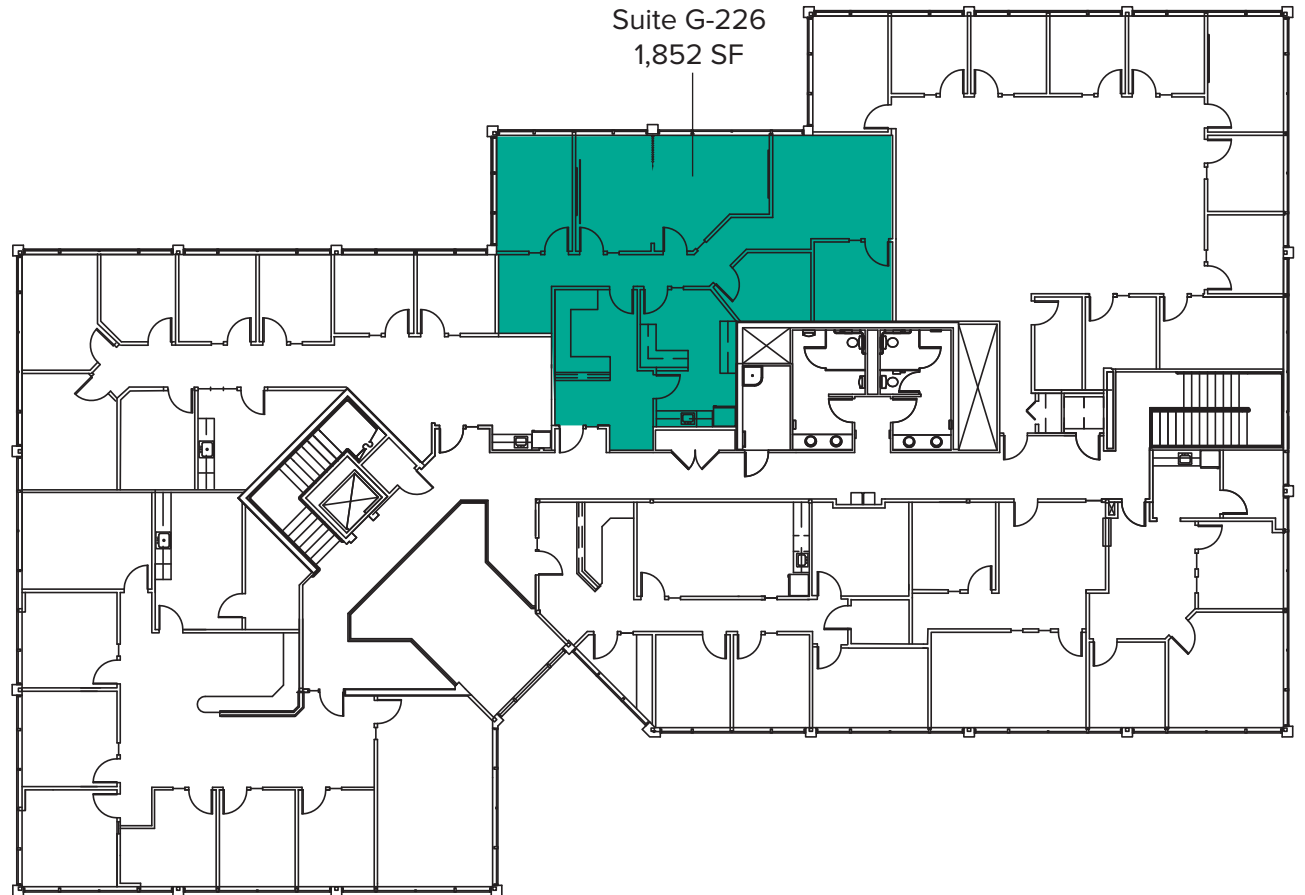


# BUILDING G (22500) SECOND LEVEL FLOOR PLAN

Suite	Square Feet	Rate
G-226	1,852 SF	\$29.00/SF, NNN

Second floor office with reception area, 3 private offices, conference room, open work area, and break room with a kitchenette.

**Available Now.**



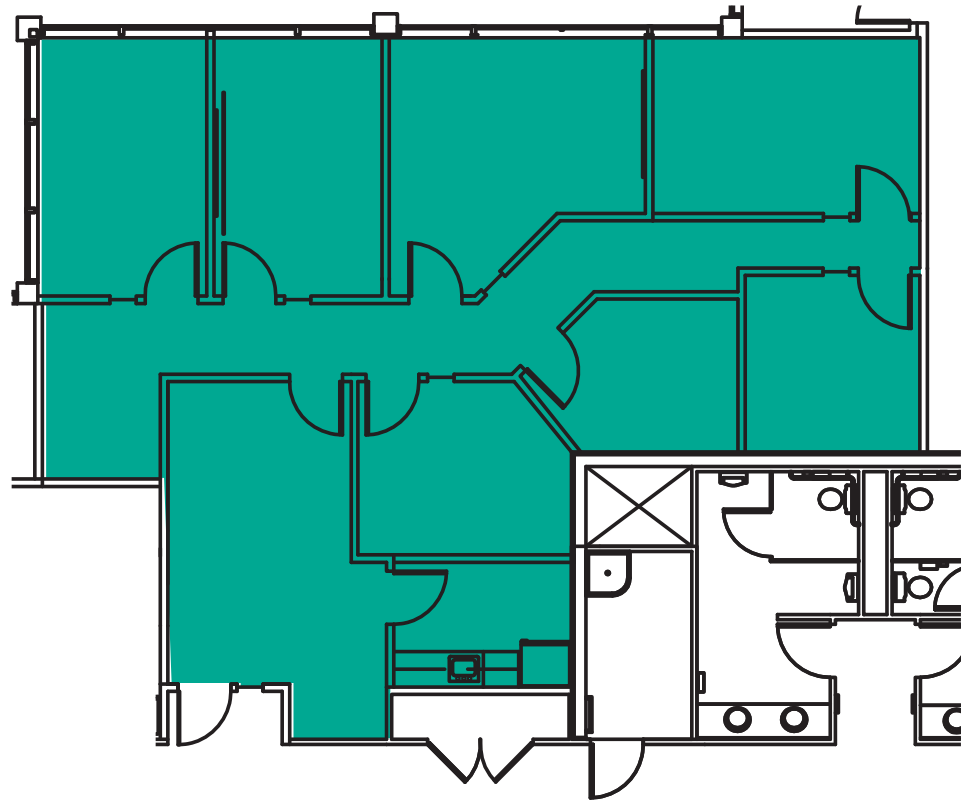
The information provided herein has been obtained from sources believed to be reliable, but no representation or warranty, express or implied, is made with respect to the accuracy or completeness of any such information. Each prospective buyer or tenant should independently investigate, evaluate and verify all information provided herein and any other matters deemed material. Please consult your attorney, tax advisor or other professional advisor. The terms of sale or lease set forth herein are subject to change or withdrawal at any time and without notice.

# SUITE G-226 SAMPLE FLOOR PLAN

## SUITE FEATURES

---

- **1,852 SF**
- **\$29.00/SF, NNN**
- Second floor office space
- Reception area
- 7 Private Offices
- Break room with kitchenette





# SITE PLAN





# LOCATION MAP

