



FOR LEASE - 18,681 SF

Riverbend Commerce Park | 26601 79th Ave S, Kent, WA

Property Highlights

- Size: 18,681 SF
- Loading: 5 Dock High & 1 Grade Level
- Clear Height: 24'
- Sprinklers: ESFR
- Power: 600 amps/3 phase 480v
- Access: SR 167 and I-5 via 277th St
- Available: January 1, 2025
- Rate: \$1.15 PSF Blended, NNN



For Leasing Information:

Thad Mallory, SIOR
P (425) 362-1410
thad.mallory@nmrk.com

Taylor Hoff, SIOR
P (425) 362-1388
taylor.hoff@nmrk.com

Cam Warren
P (425) 362-1395
cam.warren@nmrk.com

Leased by:

NEWMARK


Owned by:


BLP BRIDGE
LOGISTICS
PROPERTIES


FOR LEASE

Riverbend Commerce Park | 26601 79th Ave S, Kent, WA

 **Dock Doors**
5


 **Car Parks**
16 spaces


 **Clear Height**
24'

 **Drive In Doors**
1

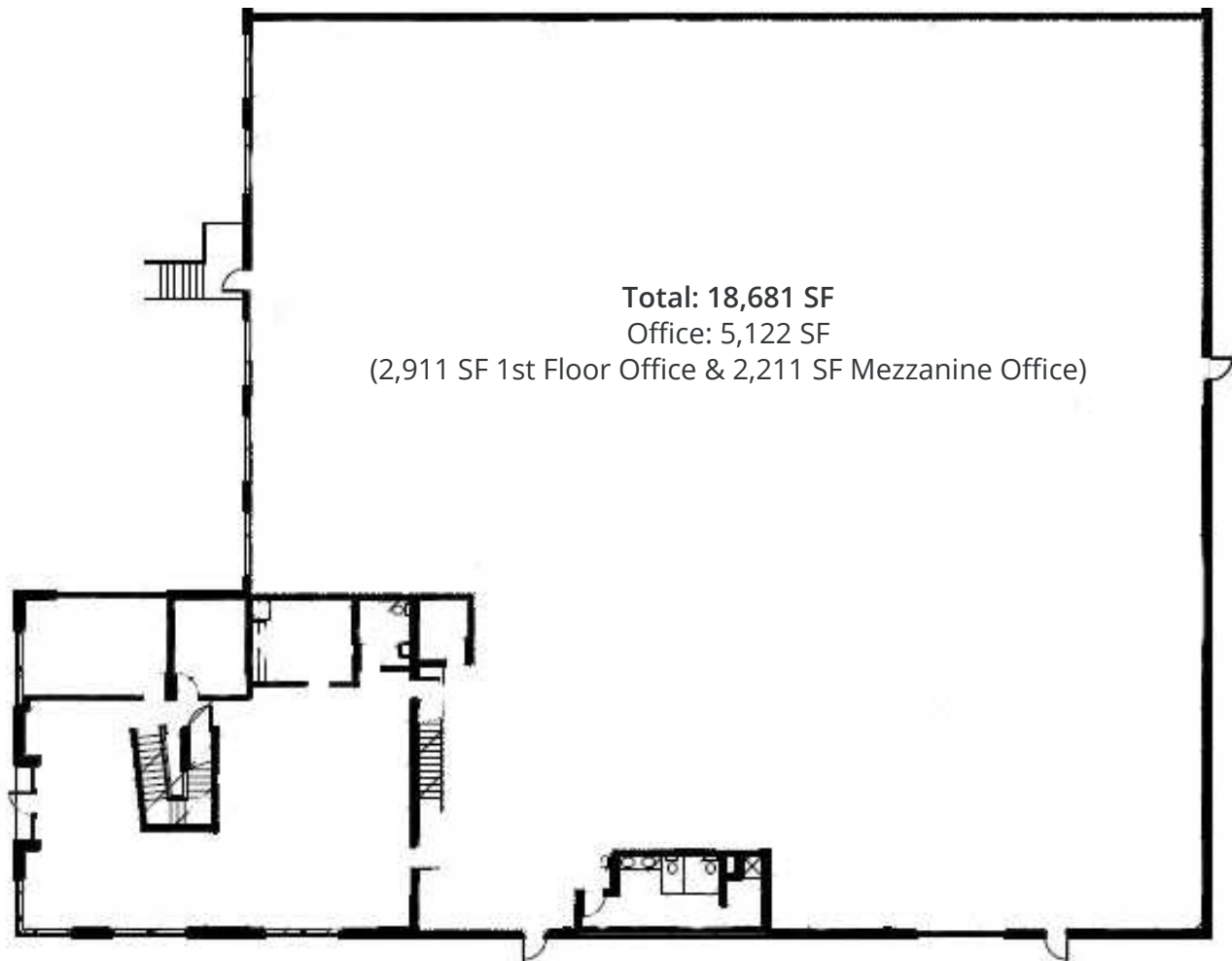
 **Power**
600 amps / 3 phase 480v

 **Building Depth**
135'

 **Column Spacing**
50' x 42'

 **Truck Court**
150' shared

 **Sprinklers**
ESFR



For Leasing Information:

Thad Mallory, SIOR
P (425) 362-1410
thad.mallory@nrmk.com

Taylor Hoff, SIOR
P (425) 362-1388
taylor.hoff@nrmk.com

Cam Warren
P (425) 362-1395
cam.warren@nrmk.com

Leased by:

NEWMARK

Owned by:

 **BRIDGE
LOGISTICS
PROPERTIES**

FOR LEASE

Riverbend Commerce Park | 26601 79th Ave S, Kent, WA



For Leasing Information:

Thad Mallory, SIOR
P (425) 362-1410
thad.mallory@nrmk.com

Taylor Hoff, SIOR
P (425) 362-1388
taylor.hoff@nrmk.com

Cam Warren
P (425) 362-1395
cam.warren@nrmk.com

Leased by:

NEWMARK

Owned by:

BLP BRIDGE
LOGISTICS
PROPERTIES