

MARYMOOR

BUSINESS PARK

17722 NE 65th Street
Redmond, WA 98052

2,400 SF AVAILABLE



TYLER SLONE • 425.274.4281
slone@broderickgroup.com

ERIC MEUSSNER • 425.274.4282
meussner@broderickgroup.com

PAUL JERUE • 425.646.5223
jerue@broderickgroup.com

BRODERICK
· GROUP ·

MARYMOOR

BUSINESS PARK

17722 NE 65th Street
Redmond, WA 98052



PROPERTY HIGHLIGHTS



Nearby restaurants
& various retail
amenities



Excellent access
to SR-520



Grade Level
Loading Doors



Next door to
Marymoor Park

The information contained herein has been given to us by the owner or sources which we deem reliable. We have no reason to doubt its accuracy, but we do not guarantee it. Prospective tenants should carefully verify all information contained herein.

TYLER SLONE • 425.274.4281
slone@broderickgroup.com

ERIC MEUSSNER • 425.274.4282
meussner@broderickgroup.com

PAUL JERUE • 425.646.5223
jerue@broderickgroup.com

BRODERICK
GROUP



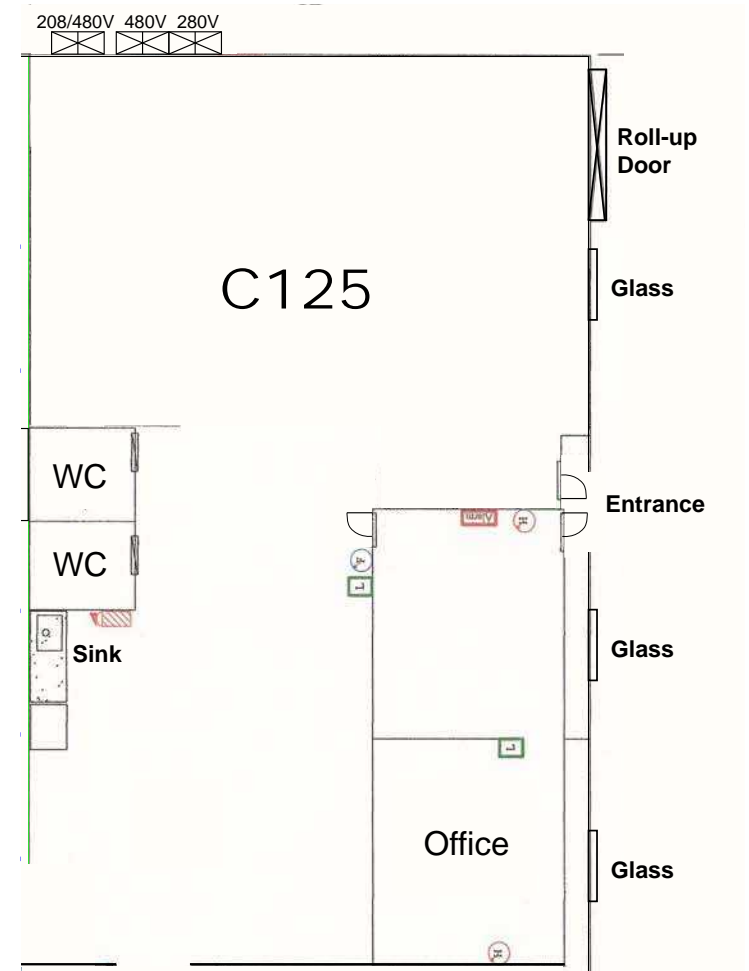
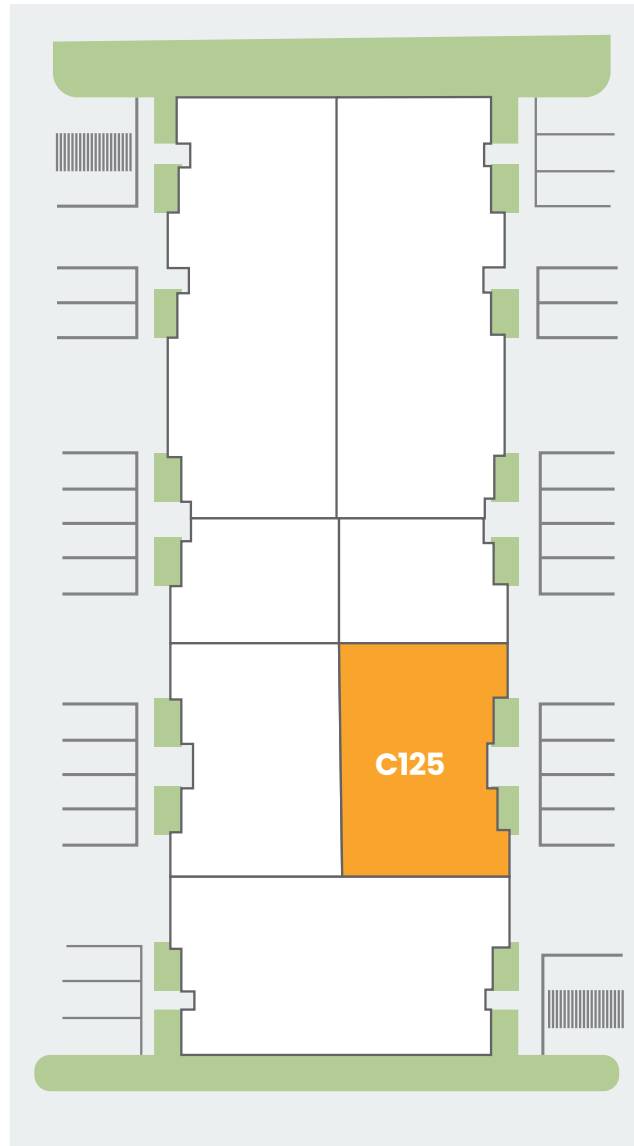
BUSINESS PARK

Suite C125

2,400 SF

Available 11/1/2024

Asking: \$25.00/SF/Year +
\$7.60/SF/Year





NEARBY AMENITIES

- COFFEE
- SERVICE
- FOOD OPTION

- | | | | |
|---|---|--|---|
| <ul style="list-style-type: none"> 1. Sammamish Cleaners 2. Pomegranate Bistro 3. Jimmy John's 4. Chipotle 5. Subway 6. Postdoc Brewing 7. Peet's Coffee & Tea | <ul style="list-style-type: none"> 8. Asiana Bistro 9. Panera Bread 10. Starbucks 11. Rite-Aid 12. Agave Cocina 13. Baskin Robbins 14. Fatburger | <ul style="list-style-type: none"> 15. Bank of America 16. Blazin Bagels 17. Mac & Jack's Brewery 18. Home Depot 19. Fred Meyer 20. Discount Tire 21. Mercurys Coffee Co. | <ul style="list-style-type: none"> 22. Target 23. Kohl's 24. ZenRock Fitness 25. Redmond Kindercare 26. BJ's Restaurant & Brewhouse 27. Typhoon |
|---|---|--|---|

TYLER SLONE • 425.274.4281
slone@broderickgroup.com

ERIC MEUSSNER • 425.274.4282
meussner@broderickgroup.com

PAUL JERUE • 425.646.5223
jerue@broderickgroup.com

