

116TH STEELE STREET CENTER

11317 STEELE ST S | SUITE 104 | LAKEWOOD, WA 9844

FOR LEASE - 1,250 SF

OFFICE SPACE IN RETAIL CENTER



SUITE 104 INFORMATION

- 1,250 SF Office
- \$18/SF/Month + NNN
- Easy access to SR-512 and I-5
- Steele Street frontage
- Plenty of parking



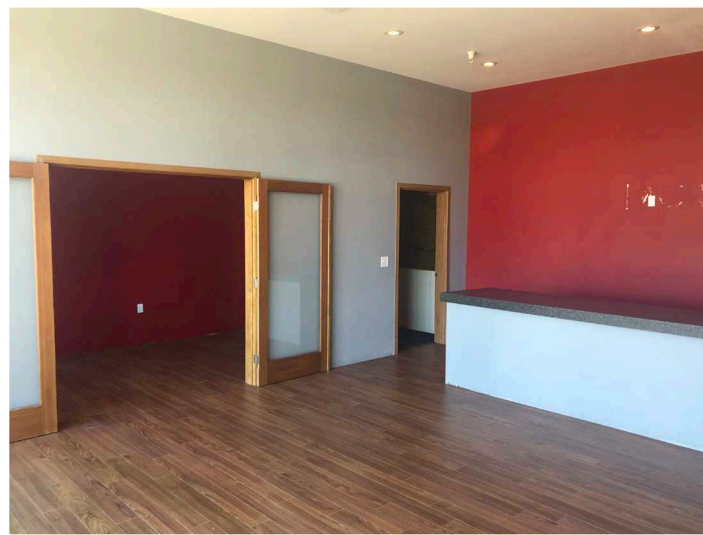
CAMERON VALENTINE
253.779.2427
cvalentine@neilwalter.com

NICK RATZKE, SIOR
253.779.2414
nratzke@neilwalter.com

All information references in this document are approximate. The information contained herein is contained from sources deemed reliable. It is provided without representation, warranty, or guarantee, expressed or implied as to accuracy. Prospective buyer or tenant should conduct its own independent investigation relating to the property, government codes and regulations, allowed uses, and all other matters, regardless of whether they are referred to or contained in this document.

116TH STEELE STREET CENTER

11317 STEELE ST S | SUITE 104 | LAKEWOOD, WA 9844



CAMERON VALENTINE
253.779.2427
cvalentine@neilwalter.com

NICK RATZKE, SIOR
253.779.2414
nratzke@neilwalter.com

1940 East D St, #100
Tacoma, WA 98421
253.779.8400
www.neilwalter.com

All information references in this document are approximate. The information contained herein is contained from sources deemed reliable. It is provided without representation, warranty, or guarantee, expressed or implied as to accuracy. Prospective buyer or tenant should conduct its own independent investigation relating to the property, government codes and regulations, allowed uses, and all other matters, regardless of whether they are referred to or contained in this document.