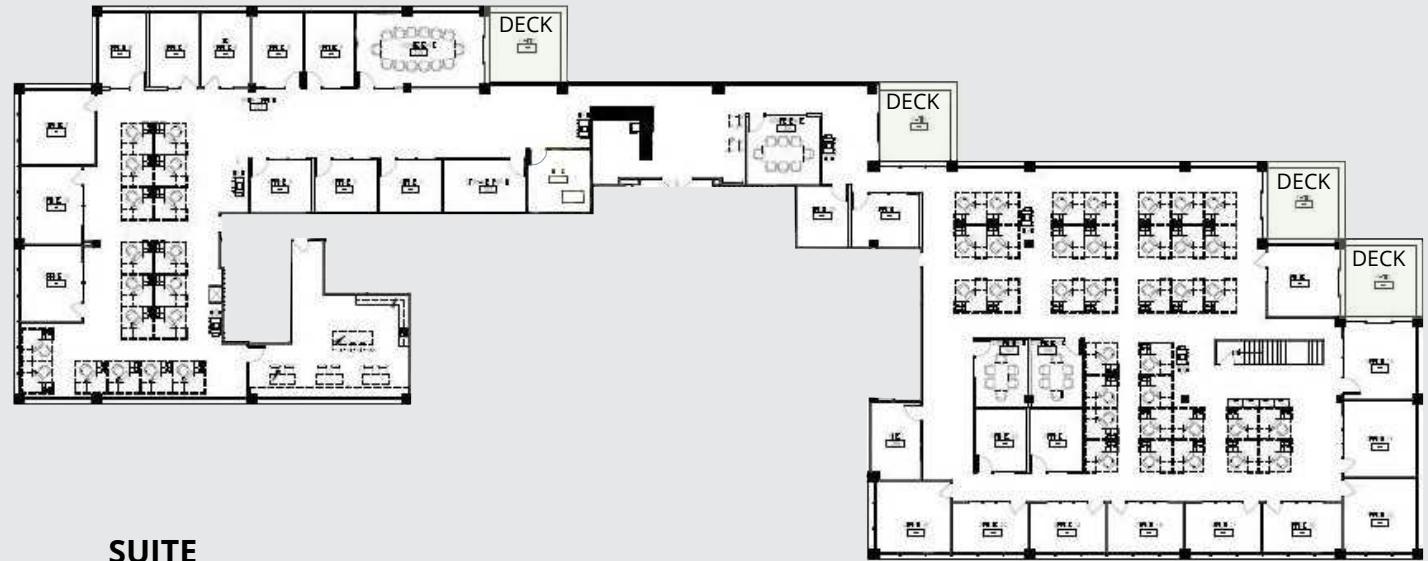


3009

**CCE III**

**AVAILABLE FOR SUBLEASE**

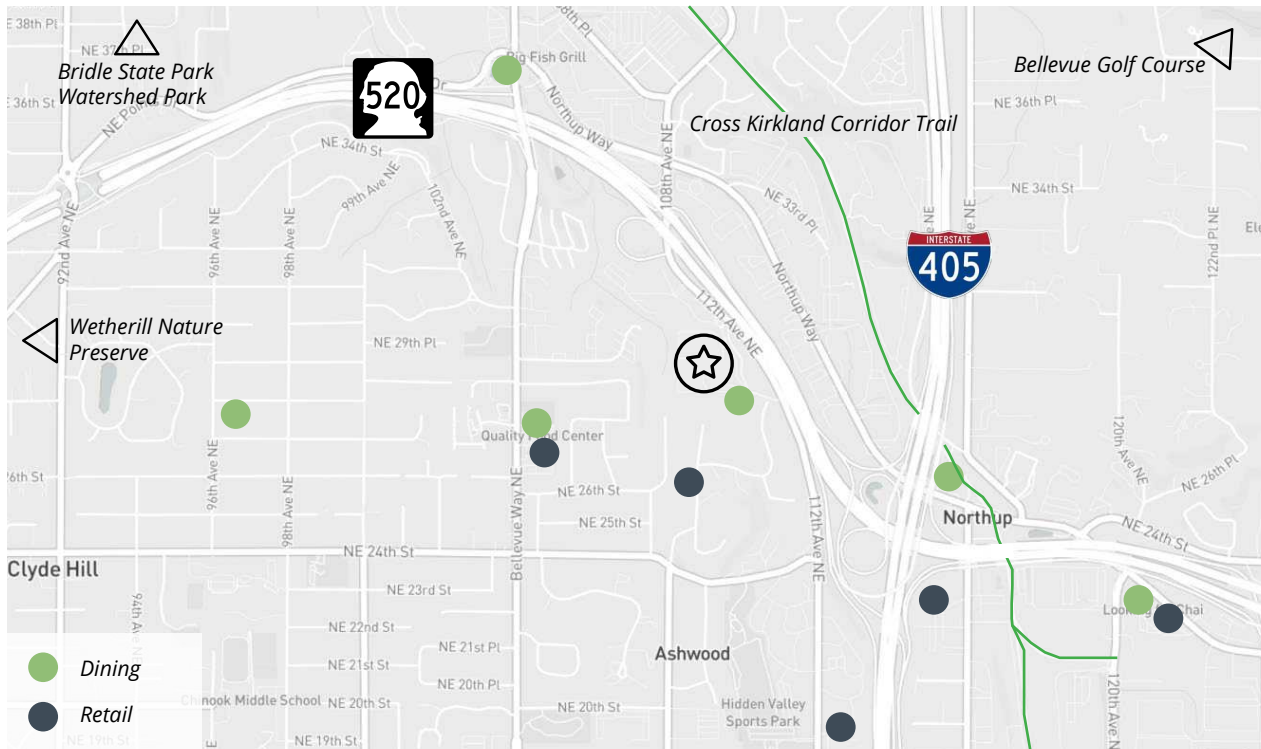
3009 112TH Ave NE  
Bellevue, WA



# SUITE 200

**17,605 SF Available now | Term through May 31, 2029**

- Heavy private office build out
- Meeting rooms
- Open work area
- Large conference room
- Reception area
- Kitchen
- Four decks
- Furniture available



# AMENITIES



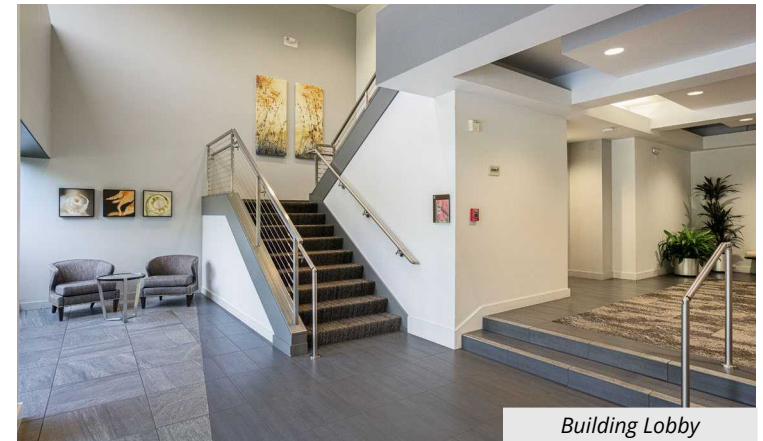
The building offers shared outdoor space, on-site dining options, and easy access to transit.



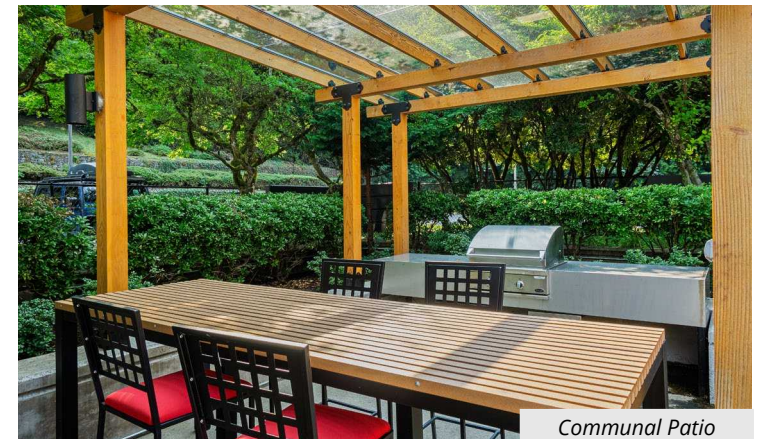
CCE III is located just 2 miles away from the Bellevue CBD and Downtown Kirkland.



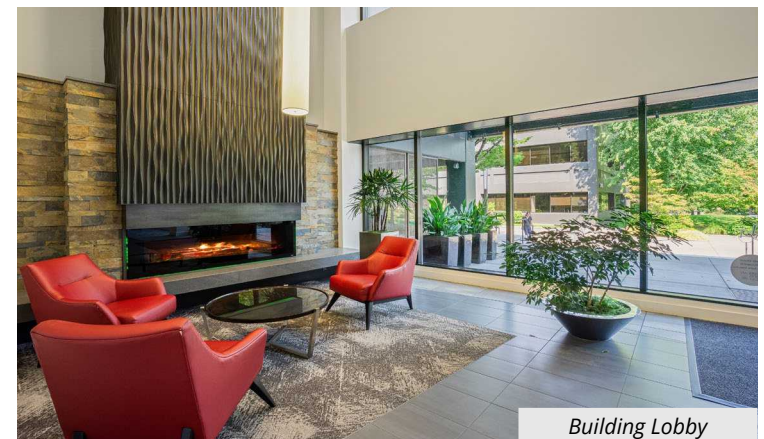
Bridle State Park, Watershed Park, and Wetherill Nature Preserve are all within 3 miles.



Building Lobby



Communal Patio



Building Lobby

## **Jake Bos**

+1 425 974 4086

jake.bos@jll.com

## **Bailey Hallis**

+1 206 777 5203

bailey.hallis@jll.com

# **CCE III**

**3009 112TH Ave NE  
Bellevue, WA**



Although information has been obtained from sources deemed reliable, neither Owner nor JLL makes any guarantees, warranties or representations, express or implied, as to the completeness or accuracy as to the information contained herein. Any projections, opinions, assumptions or estimates used are for example only. There may be differences between projected and actual results, and those differences may be material. The Property may be withdrawn without notice. Neither Owner nor JLL accepts any liability for any loss or damage suffered by any party resulting from reliance on this information. If the recipient of this information has signed a confidentiality agreement regarding this matter, this information is subject to the terms of that agreement. ©2020 Jones Lang LaSalle IP, Inc. All rights reserved.