

FOR LEASE

30,375 SF - New spec building in a great Kent location with excellent access to SR 167.

Concourse Building

8325 S 218th Street, Kent, WA

PROPERTY HIGHLIGHTS

- + Divisible to approx. 15,187 SF
- + Class A building design and construction with ESFR sprinklers and LED motion activated lighting
- + 30' clear heights
- + Column spacing of 66.5'x42'
- + I-2 Zoning which allows for industrial, manufacturing, warehouse, business park and office
- + Exposure off E.Valley Hwy.
- + Ability to fence and secure truck court
- + Call for rates

ARIE SALOMON, SIOR, CCIM

Principal
+1 425 586 5636
asalomon@nai-psp.com

JEFF FORSBERG, CCIM

Principal
+1 425 586 5610
jforsberg@nai-psp.com

LUKE JARVIS

Associate
+1 425 586 5609
ljarvis@nai-psp.com



THE INFORMATION CONTAINED HEREIN HAS BEEN GIVEN TO US BY THE OWNER OF THE PROPERTY OR OTHER SOURCES WE DEEM RELIABLE, WE HAVE NO REASON TO DOUBT ITS ACCURACY, BUT WE DO NOT GUARANTEE IT. ALL INFORMATION SHOULD BE VERIFIED PRIOR TO PURCHASE OR LEASE.

TOTAL SF

30,375 SF

OFFICE SF

BTS Office

MEZZANINE

2,000 SF

LOADING

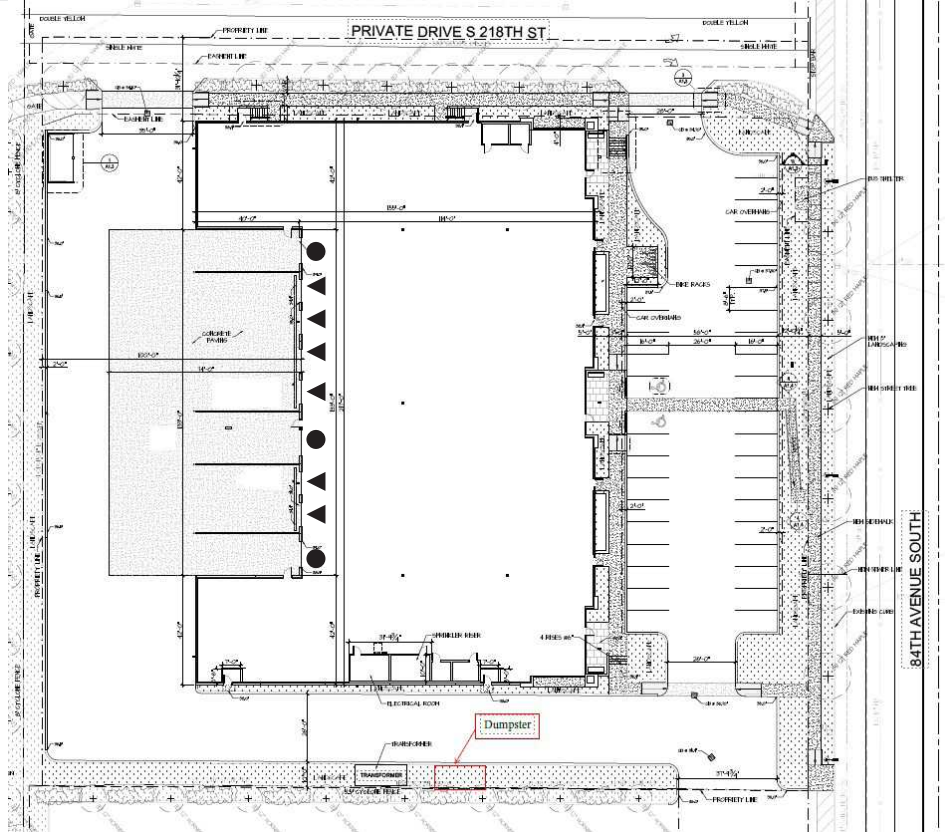
6 DH & 3 GL

DELIVERY DATE

2Q, 2025

nai-psp.com

Aerial & Site Plan



- ▲ DOCK DOOR
- GRADE LEVEL DOOR

ARIE SALOMON, SIOR, CCIM
Principal
+1 425 586 5636
asalomon@nai-psp.com

JEFF FORSBERG, CCIM
Principal
+1 425 586 5610
jforsberg@nai-psp.com

LUKE JARVIS
Associate
+1 425 586 5609
ljarvis@nai-psp.com

