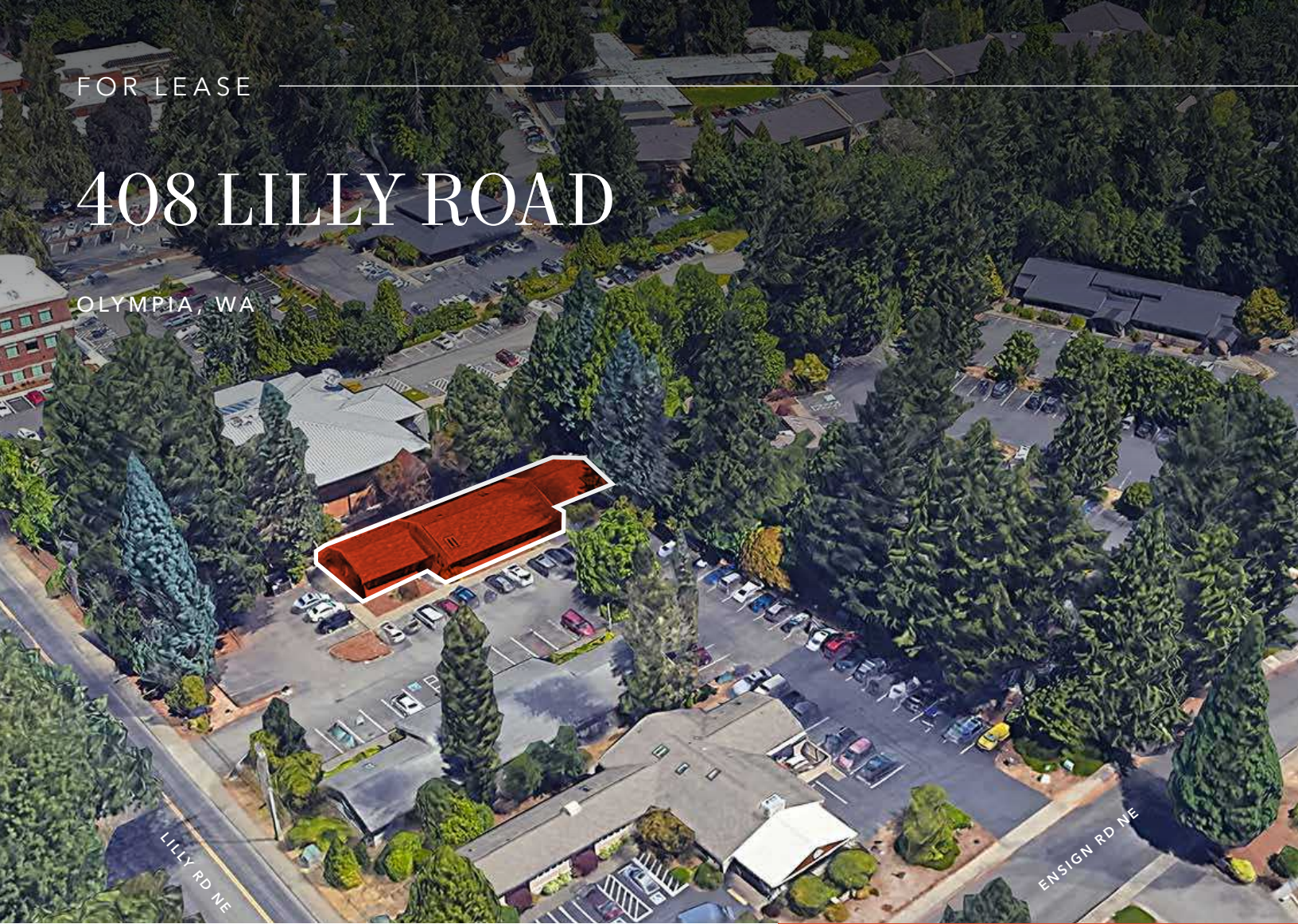


FOR LEASE

# 408 LILLY ROAD

OLYMPIA, WA



## *1,100 SF Medical Building For Lease*

1,100 SF available

\$2,300/month fully serviced

4 private offices with sinks, reception and kitchenette

Across the street from Providence St. Peter Hospital

**AMY HARDING**

Executive Vice President

406.260.5530

amy.harding@kidder.com

**KIDDER.COM**

This information supplied herein is from sources we deem reliable. It is provided without any representation, warranty, or guarantee, expressed or implied as to its accuracy. Prospective Buyer or Tenant should conduct an independent investigation and verification of all matters deemed to be material, including, but not limited to, statements of income and expenses. Consult your attorney, accountant, or other professional advisor.

**CONTACT**

BROKERS FOR MORE DETAILS

**NOW**

AVAILABLE

**km Kidder Mathews**

FOR LEASE

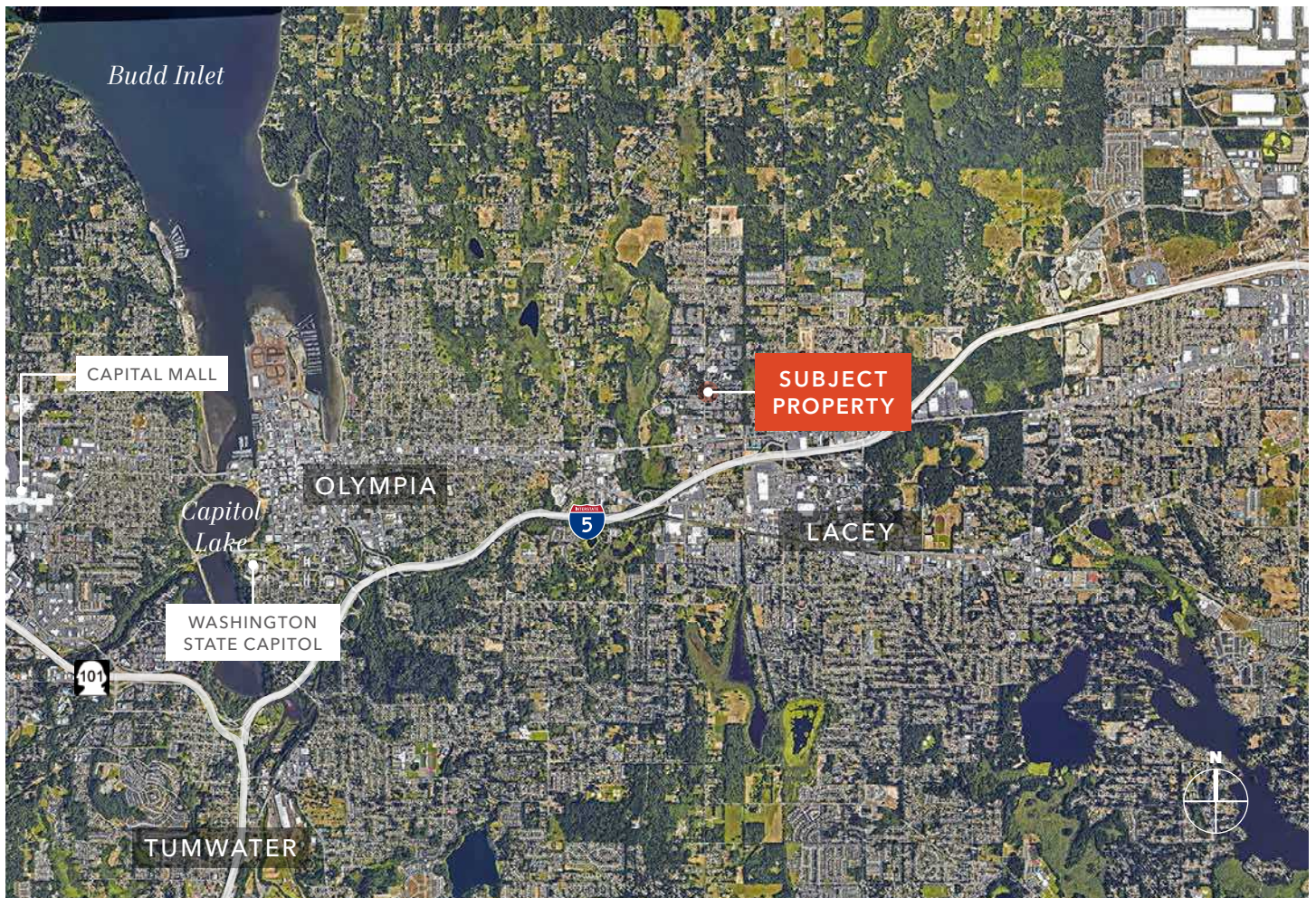


*1,100 SF*

AVAILABLE

*NOW*

AVAILABLE



[KIDDER.COM](https://www.kidder.com)

This information supplied herein is from sources we deem reliable. It is provided without any representation, warranty, or guarantee, expressed or implied as to its accuracy. Prospective Buyer or Tenant should conduct an independent investigation and verification of all matters deemed to be material, including, but not limited to, statements of income and expenses. Consult your attorney, accountant, or other professional advisor.

 **Kidder  
Mathews**