

FOR LEASE

# 2629 PARKMONT LANE, STE 101

OLYMPIA, WA



*Quiet West Olympia location near  
Black Lake Blvd*

---

1,188 SF available

---

\$2,500/month fully serviced

---

5 private offices, kitchenette, reception area

---

**AMY HARDING**  
Executive Vice President  
406.260.5530  
amy.harding@kidder.com

[KIDDER.COM](http://KIDDER.COM)

This information supplied herein is from sources we deem reliable. It is provided without any representation, warranty, or guarantee, expressed or implied as to its accuracy. Prospective Buyer or Tenant should conduct an independent investigation and verification of all matters deemed to be material, including, but not limited to, statements of income and expenses. Consult your attorney, accountant, or other professional advisor.

---

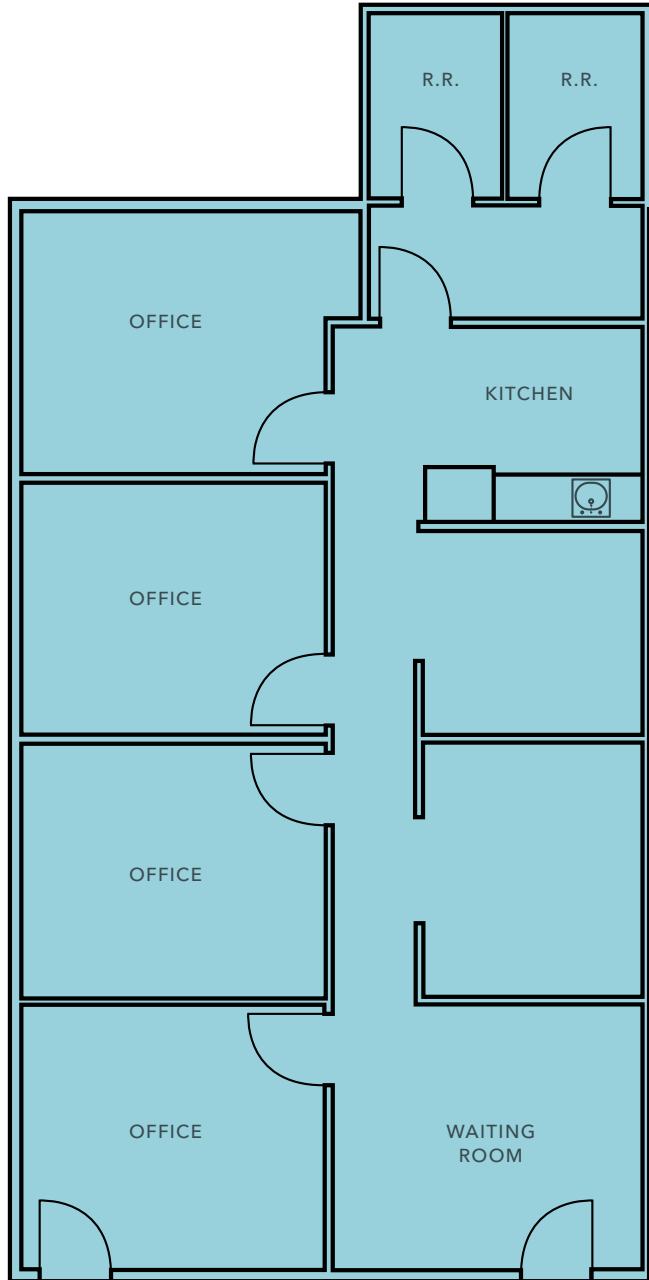
**CONTACT**  
BROKERS FOR MORE DETAILS

---

**NOW**  
AVAILABLE

 **Kidder  
Mathews**

FOR LEASE



*\$2,500*

PER MONTH, FULL SERVICE

*NOW*

AVAILABLE

AMY HARDING 406.260.5530 | amy.harding@kidder.com

**KIDDER.COM**

This information supplied herein is from sources we deem reliable. It is provided without any representation, warranty, or guarantee, expressed or implied as to its accuracy. Prospective Buyer or Tenant should conduct an independent investigation and verification of all matters deemed to be material, including, but not limited to, statements of income and expenses. Consult your attorney, accountant, or other professional advisor.



FOR LEASE



*1,188 SF*

AVAILABLE

*SUITE 101*

AVAILABLE



[KIDDER.COM](http://KIDDER.COM)

This information supplied herein is from sources we deem reliable. It is provided without any representation, warranty, or guarantee, expressed or implied as to its accuracy. Prospective Buyer or Tenant should conduct an independent investigation and verification of all matters deemed to be material, including, but not limited to, statements of income and expenses. Consult your attorney, accountant, or other professional advisor.

