

For Lease

# EASTSIDE PLAZA BUILDING 4

1300 QUINCE ST SE, OLYMPIA, WA

Downtown Olympia

PLUM ST SE

UNION AVE SE

EASTSIDE ST SE



KIDDER.COM

**km** Kidder Mathews



# HIGHLY- ACCESSIBLE LOCATION

48,320 SF (divisible)

\$22.00/SF, modified gross

Tenant improvements negotiable

Generator back-up

Class A

Adjacent to I-5

*3 MIN*

INTERSTATE-5

*3 MIN*

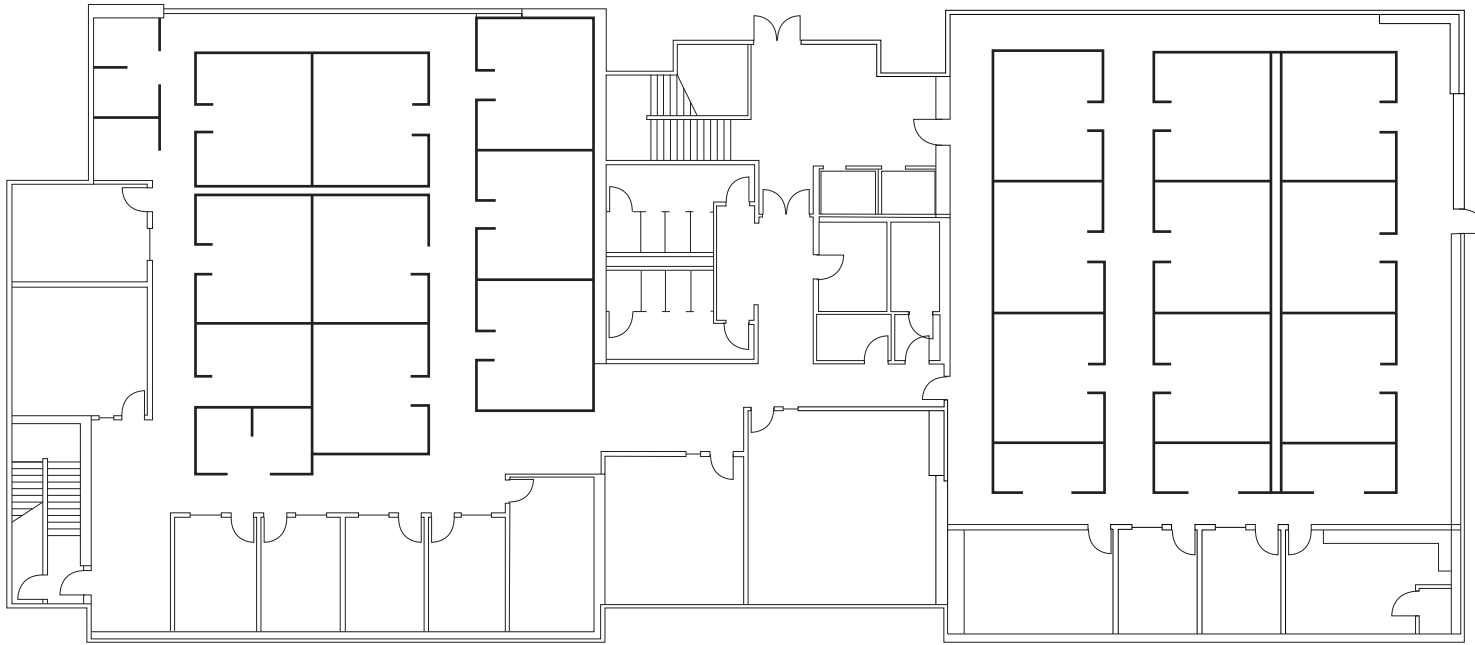
DOWNTOWN OLYMPIA







# FIRST FLOOR



*13,536 SF*

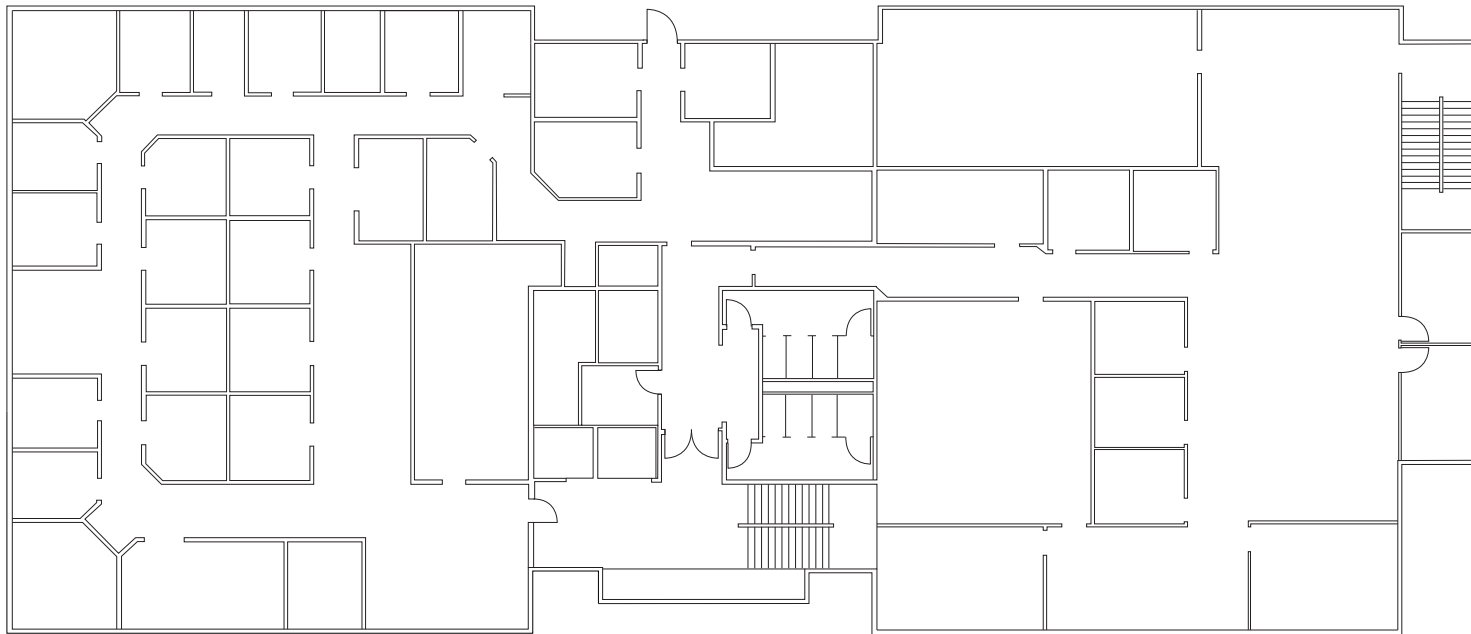
AVAILABLE

*\$22.00*

LEASE RATE (SF/YR)



# SECOND FLOOR



---

*13,536 SF*

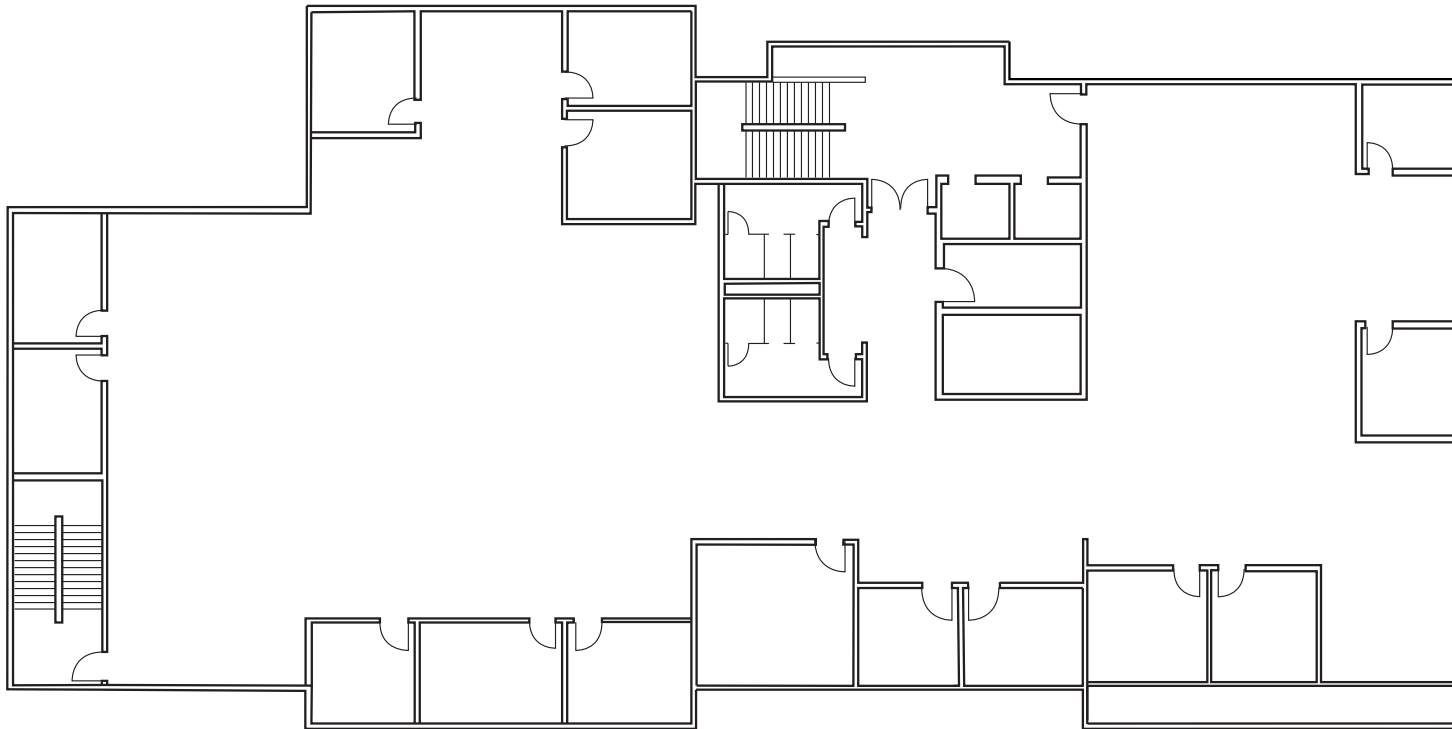
AVAILABLE

---

*\$22.00*

LEASE RATE (SF/YR)

# THIRD FLOOR



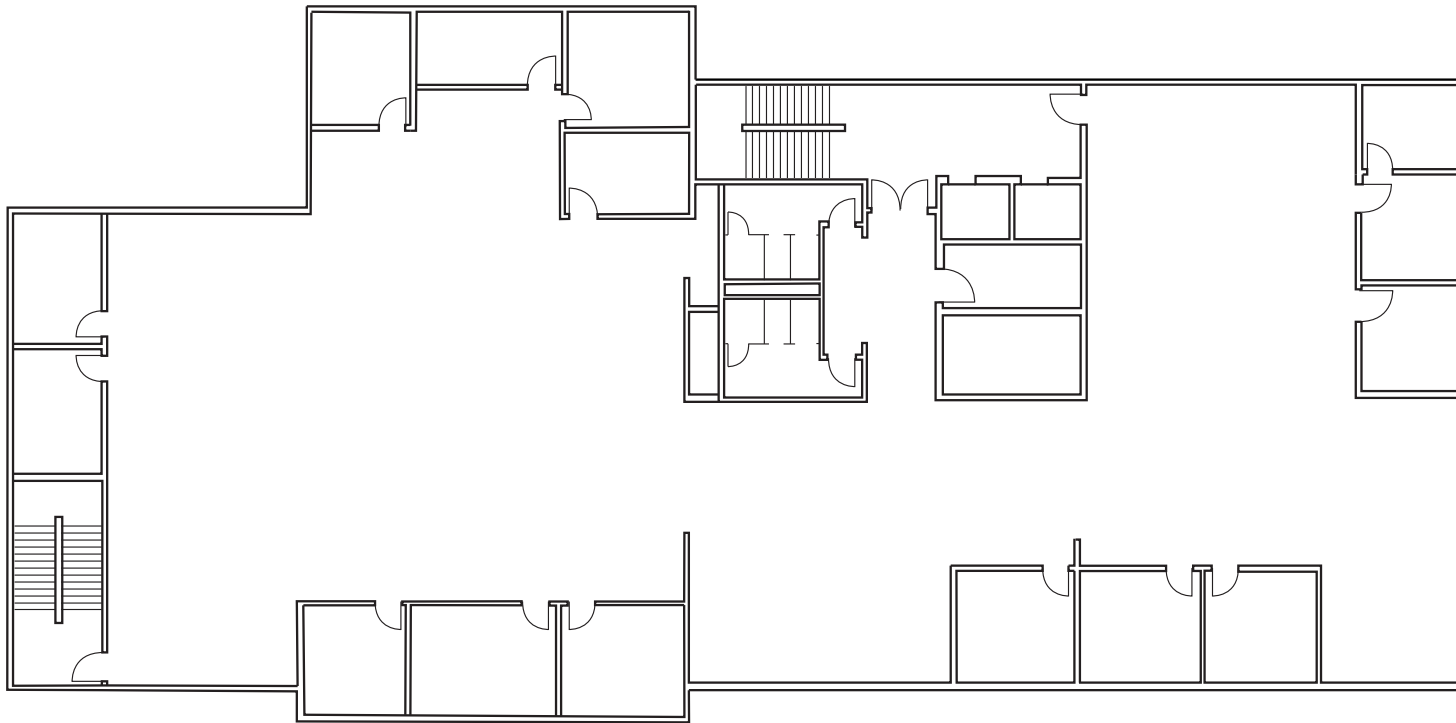
10,624 SF

AVAILABLE

\$22.00

LEASE RATE (SF/YR)

# FOURTH FLOOR



10,624 SF

AVAILABLE

\$22.00

LEASE RATE (SF/YR)

# EASTIDE PLAZA BUILDING 4

*Exclusively leased by*

AMY HARDING

360.705.1377

amy.harding@kidder.com

KIDDER.COM

This information supplied herein is from sources we deem reliable. It is provided without any representation, warranty, or guarantee, expressed or implied as to its accuracy. Prospective Buyer or Tenant should conduct an independent investigation and verification of all matters deemed to be material, including, but not limited to, statements of income and expenses. Consult your attorney, accountant, or other professional advisor.

