

FOR LEASE

BOLETT WAREHOUSE & YARD

1525 BOLETT STREET, BLAINE, WA 98230



*11,250 SF warehouse and office with ±1.0
acre of yard in Blaine, WA for lease*

11,250 SF stand-alone building

1.56 acre total site area

1,875 SF first floor office, quality buildout with HVAC

1,875 SF bonus storage mezzanine

8 dock-high doors (5 with pit-style levelers) and 1 grade-level door

Maximum 16' clear height in clear span warehouse, sprinklers

±1.0 acre of fenced and secured loading/yard area, with 70' concrete truck apron and 2 points of ingress/egress

GW (Gateway) zoning, City of Blaine

\$15,000/month plus NNN

1.56

ACRE SITE

GW

ZONING

11,250

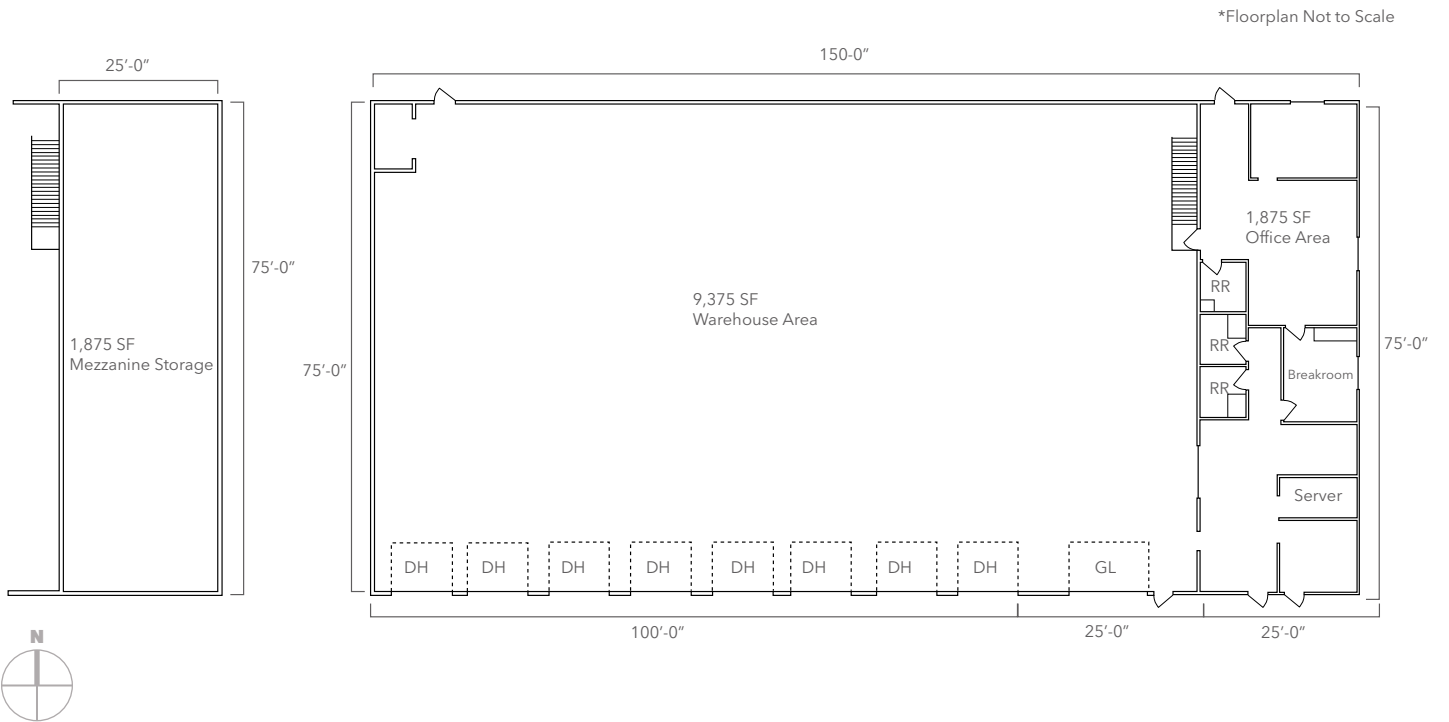
TOTAL SF

TRAVIS STANAWAY
206.248.6526
travis.stanaway@kidder.com

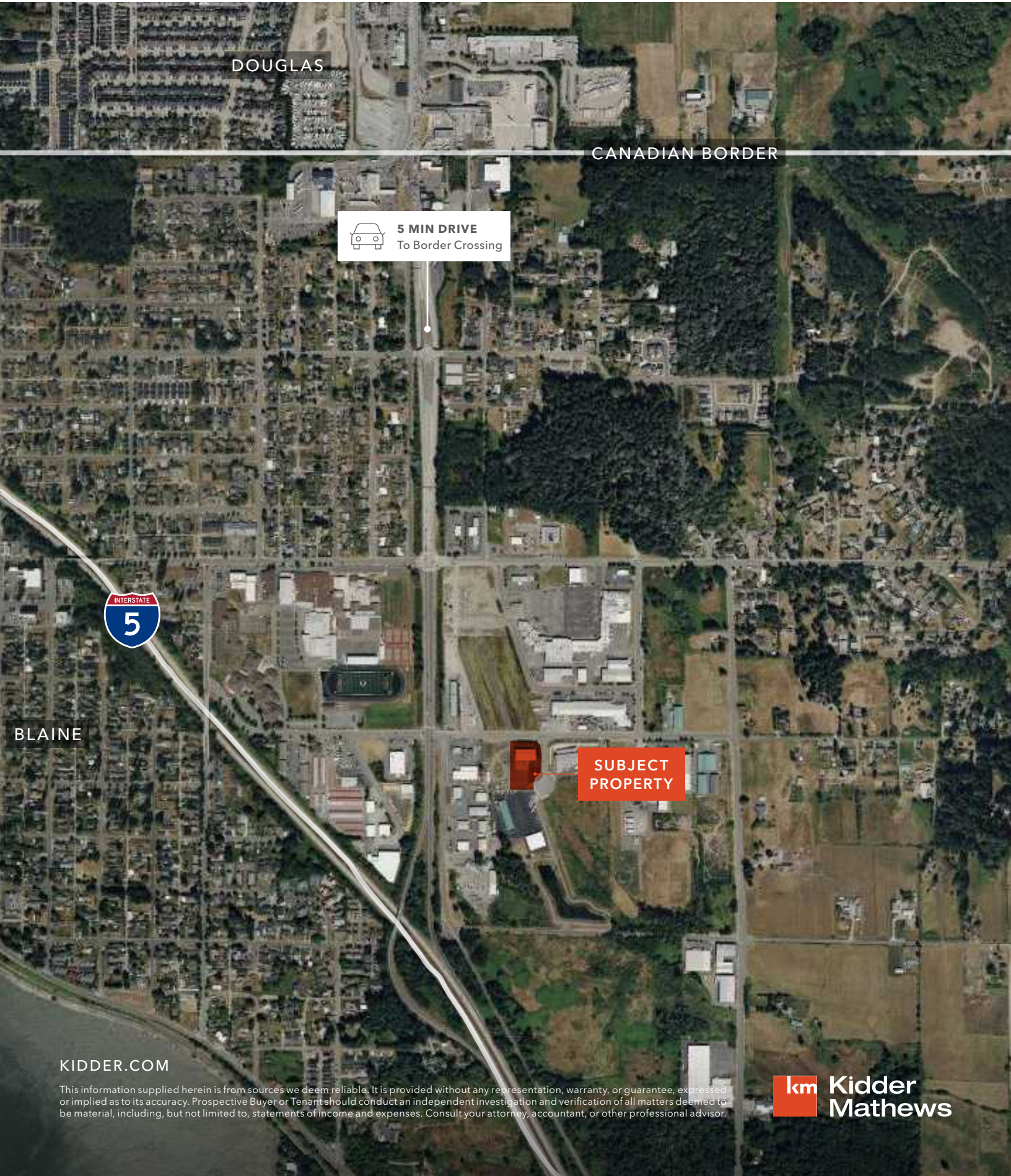
KIDDER.COM

This information supplied herein is from sources we deem reliable. It is provided without any representation, warranty, or guarantee, expressed or implied as to its accuracy. Prospective Buyer or Tenant should conduct an independent investigation and verification of all matters deemed to be material, including, but not limited to, statements of income and expenses. Consult your attorney, accountant, or other professional advisor.

 **Kidder
Mathews**



FOR LEASE



DOUGLAS

CANADIAN BORDER



5 MIN DRIVE
To Border Crossing



BLAINE

**SUBJECT
PROPERTY**

KIDDER.COM

This information supplied herein is from sources we deem reliable. It is provided without any representation, warranty, or guarantee, expressed or implied as to its accuracy. Prospective Buyer or Tenant should conduct an independent investigation and verification of all matters deemed to be material, including, but not limited to, statements of income and expenses. Consult your attorney, accountant, or other professional advisor.

km Kidder
Mathews