

BLAINE ELEMENTARY
BLAINE MIDDLE SCHOOL
BLAINE HIGH SCHOOL

BOBLETT ST



FOR GROUND LEASE OR BTS

Tim Weber | Blake Weber | Don Whittles

Blaine Rite Aid Pad
1135 Boblett St, Blaine, WA 98230

First Western Properties—Tacoma Inc. | 253.472.0404
6402 Tacoma Mall Blvd, Tacoma, WA 98409 | fwp-inc.com

AVAILABLE:

0.53 ACRES 23,087 SF

CALL FOR DETAILS

- Located in the fourth largest incorporated city within the Bellingham Metropolitan Area
- Zoned MA (Manufacturing Subzone (a))
- Located Moments from I-5
- Across the street from Blaine High School, Middle School and Elementary

SUMMARY



Population



Average HH Income



Daytime Population

Regis - 2022

5 Minutes

5,287

\$92,198

5,540

10 Minutes

7,411

\$105,695

6,980

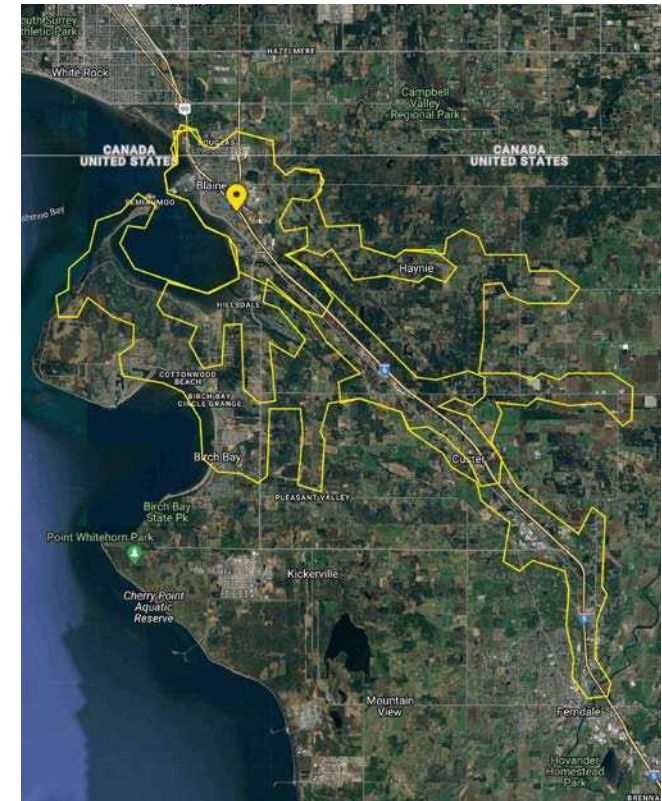
15 Minutes

17,977

\$110,943

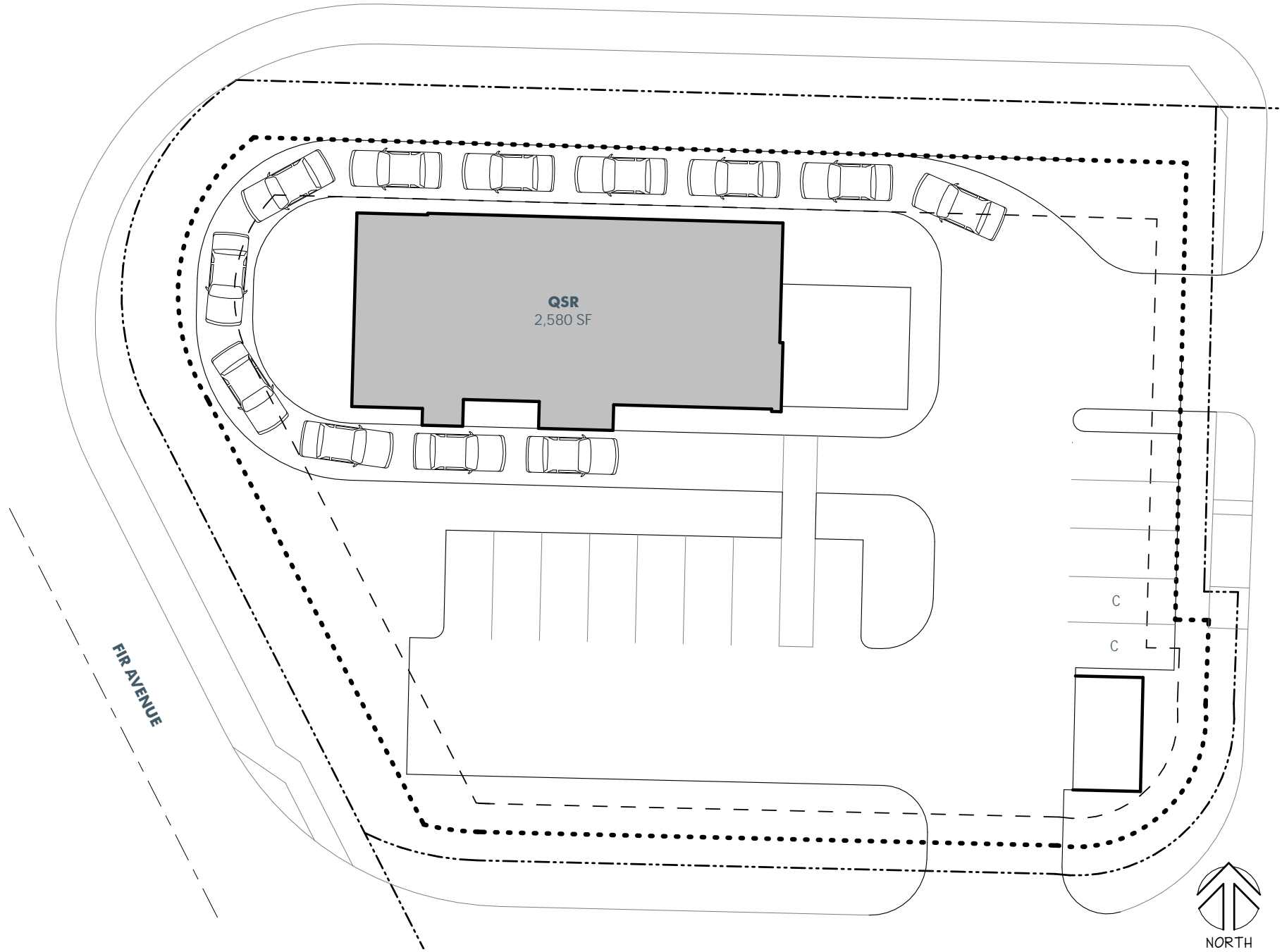
14,528

NEARBY TENANTS



SITE OPTION #1

BOBLETT STREET



FIR AVENUE

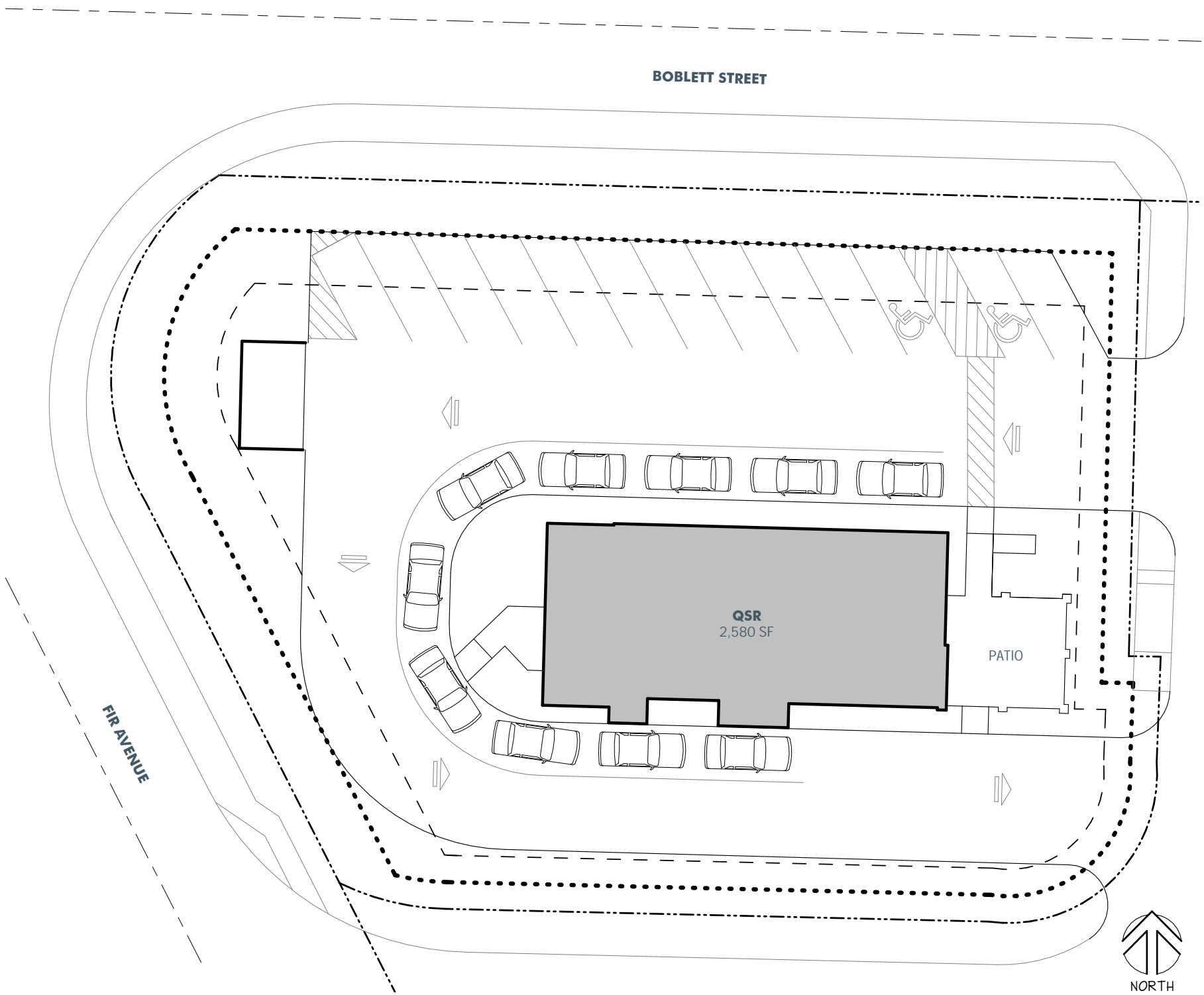
C

C

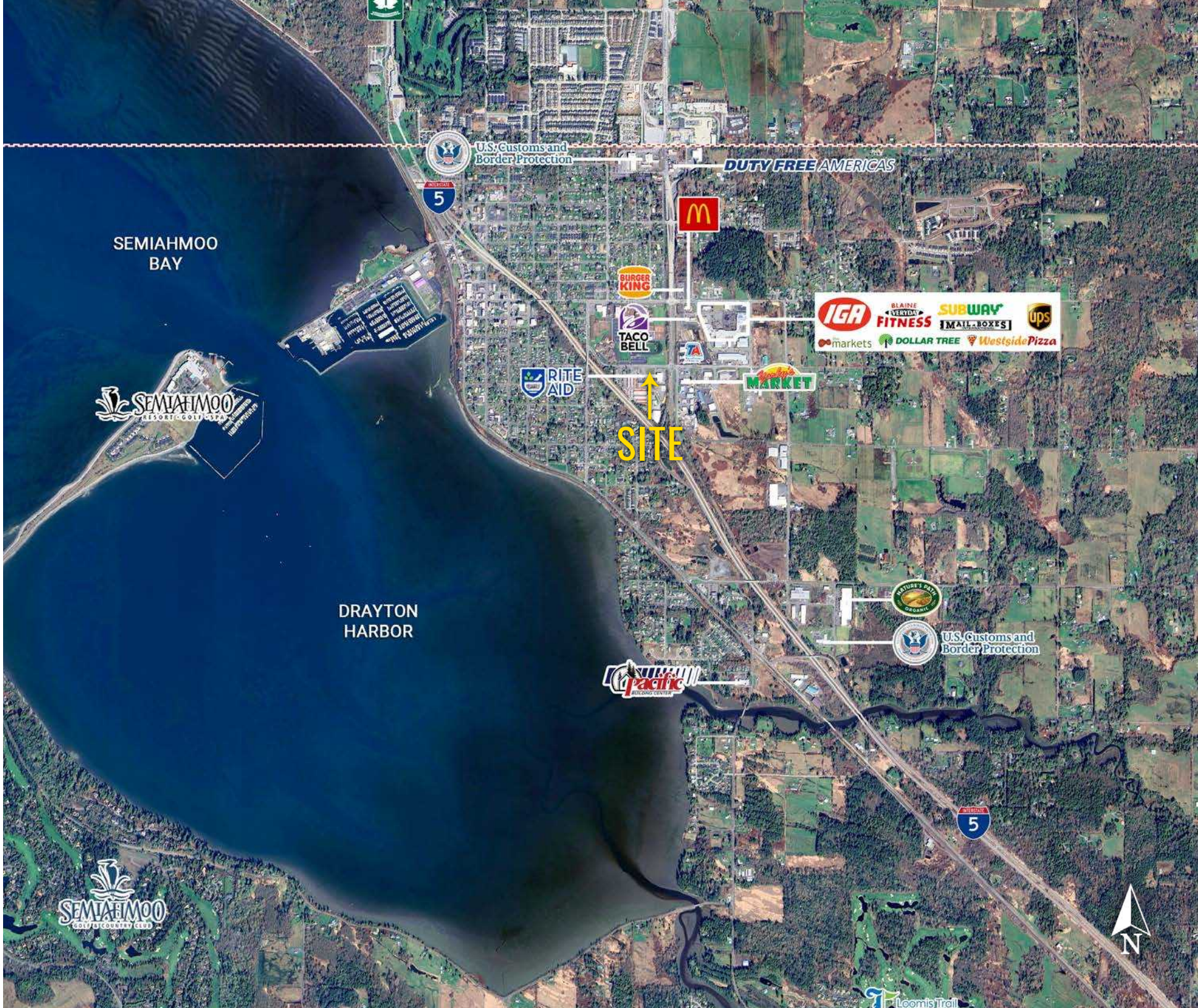


NORTH

SITE OPTION #2



LOCATION DETAILS



SEMAIHMUO BAY



DRAYTON HARBOR



SITE

DUTY FREE AMERICAS

U.S. Customs and Border Protection

U.S. Customs and Border Protection



TACOMA | KIRKLAND | PORTLAND | SEATTLE

RELATIONSHIP FOCUSED.
RESULTS DRIVEN.




BLAINE ELEMENTARY
BLAINE MIDDLE SCHOOL
BLAINE HIGH SCHOOL

BOBLETT ST





BLAKE WEBER

 206.898.1231


 bweber@firstwesternproperties.com

TIM WEBER

 253.471.5502

 tweber@firstwesternproperties.com

DON WHITTLES

 253.471.5509

 dwhittles@firstwesternproperties.com



First Western Properties—Tacoma Inc. | 253.472.0404
6402 Tacoma Mall Blvd, Tacoma, WA 98409 | fwp-inc.com

© First Western Properties, Inc. DISCLAIMER: The above information has been secured from sources believed to be reliable, however, no representations are made to its accuracy. Prospective tenants or buyers should consult their professional advisors and conduct their own independent investigation. Properties are subject to change in price and/or availability without notice.