

PACIFIC BUSINESS PARK - BLDG C

FOR LEASE - 6,845 SF

8637 S 212TH ST | KENT, WA

HIGH QUALITY INDUSTRIAL SPACE IN THE HEART OF THE KENT VALLEY



LEASE INFORMATION

Unit 8637: 6,845 SF Shell
1,150 SF Office

Lease Rate: Call Broker

Loading: 3 DH positions

Available: 3/1/2025

PROPERTY FEATURES

Enhanced security industrial park with gated access, fully fenced and lit property, and roaming nightly patrol

Corner unit

Immediate access to Hwy 167

High image building and landscaping



KERMIT JORGENSEN
206.787.1469
kjorgensen@neilwalter.com

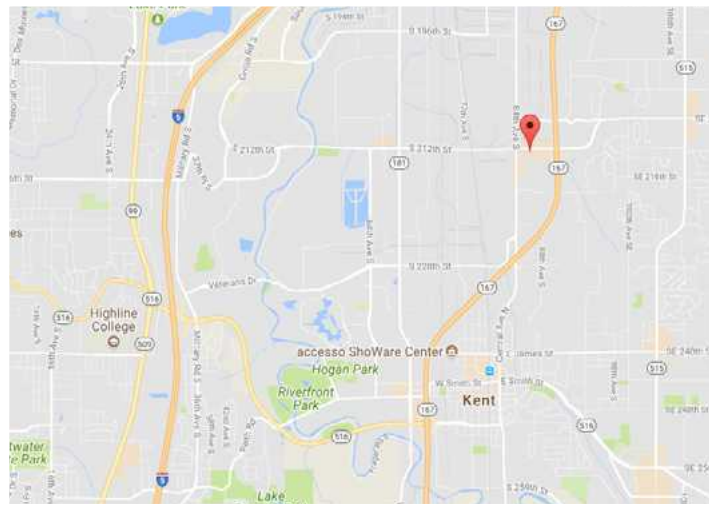
FLETCHER FARRAR
206.787.1469
ffarrar@neilwalter.com

JOHN BLEDSOE
206.787.1460
jbledsoe@neilwalter.com

All information references in this document are approximate. The information contained herein is contained from sources deemed reliable. It is provided without representation, warranty, or guarantee, expressed or implied as to accuracy. Prospective buyer or tenant should conduct its own independent investigation relating to the property, government codes and regulations, allowed uses, and all other matters, regardless of whether they are referred to or contained in this document.

PACIFIC BUSINESS PARK - BLDG C

8637 S 212TH ST | KENT, WA



KERMIT JORGENSEN
206.787.1469
kjorgensen@neilwalter.com

FLETCHER FARRAR
206.787.1469
ffarrar@neilwalter.com

JOHN BLEDSOE
206.787.1460
jbledsoe@neilwalter.com

550 S Michigan St
Seattle, WA 98108
206.787.1800
www.neilwalter.com

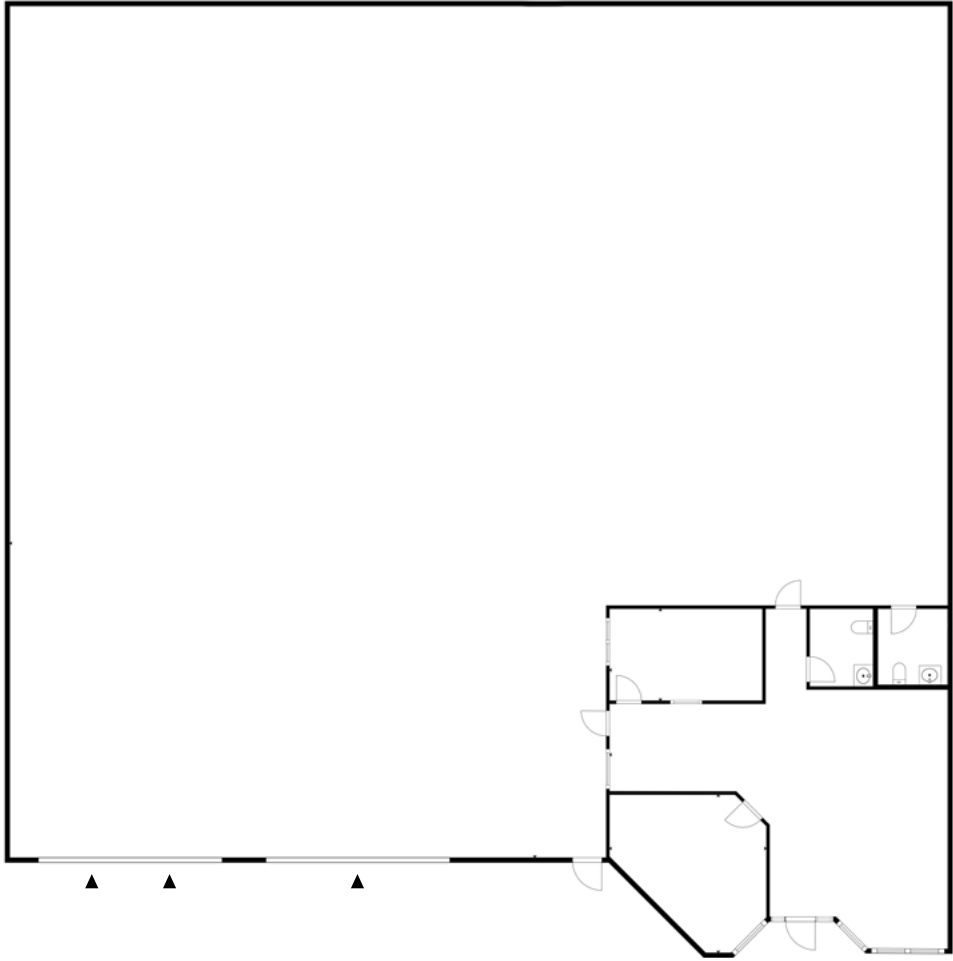
All information references in this document are approximate. The information contained herein is contained from sources deemed reliable. It is provided without representation, warranty, or guarantee, expressed or implied as to accuracy. Prospective buyer or tenant should conduct its own independent investigation relating to the property, government codes and regulations, allowed uses, and all other matters, regardless of whether they are referred to or contained in this document.

PACIFIC BUSINESS PARK - BLDG C

8637 S 212TH ST | KENT, WA



Unit 8637
6,845 SF Shell | 1,150 SF Office



LEGEND
▶ Dock High Door
● Grade Level Door

KERMIT JORGENSEN
206.787.1469
kjorgensen@neilwalter.com

FLETCHER FARRAR
206.787.1469
ffarrar@neilwalter.com

JOHN BLEDSOE
206.787.1460
jbledsoe@neilwalter.com

550 S Michigan St
Seattle, WA 98108
206.787.1800
www.neilwalter.com

All information references in this document are approximate. The information contained herein is contained from sources deemed reliable. It is provided without representation, warranty, or guarantee, expressed or implied as to accuracy. Prospective buyer or tenant should conduct its own independent investigation relating to the property, government codes and regulations, allowed uses, and all other matters, regardless of whether they are referred to or contained in this document.