

FOR LEASE

S 348th St & 1st Ave S
Federal Way, WA 98003

AVAILABLE



S 348TH ST & 1ST AVE S

Josh Parnell | Justin Holmes

First Western Properties—Tacoma Inc. | 253.472.0404
6402 Tacoma Mall Blvd, Tacoma, WA 98409 | fwp-inc.com

NEW MIXED-USE RETAIL located next to St. Francis Hospital and West Campus offices in Federal Way, near the I-5 and SR-18 interchange. This new retail development is in front of about 260 new apartments and face the main thoroughfare with 32,345 average cars per day on S 348th Street.

AVAILABLE

3,090 SF END CAP \$42.00 PSF + \$8.00 PSF NNN



Population



Average HH Income



Daytime Population

Regis - 2024

	Population	Average HH Income	Daytime Population
Mile 1	12,961	\$123,898	11,737
Mile 3	99,840	\$123,573	60,210
Mile 5	192,445	\$130,358	122,199

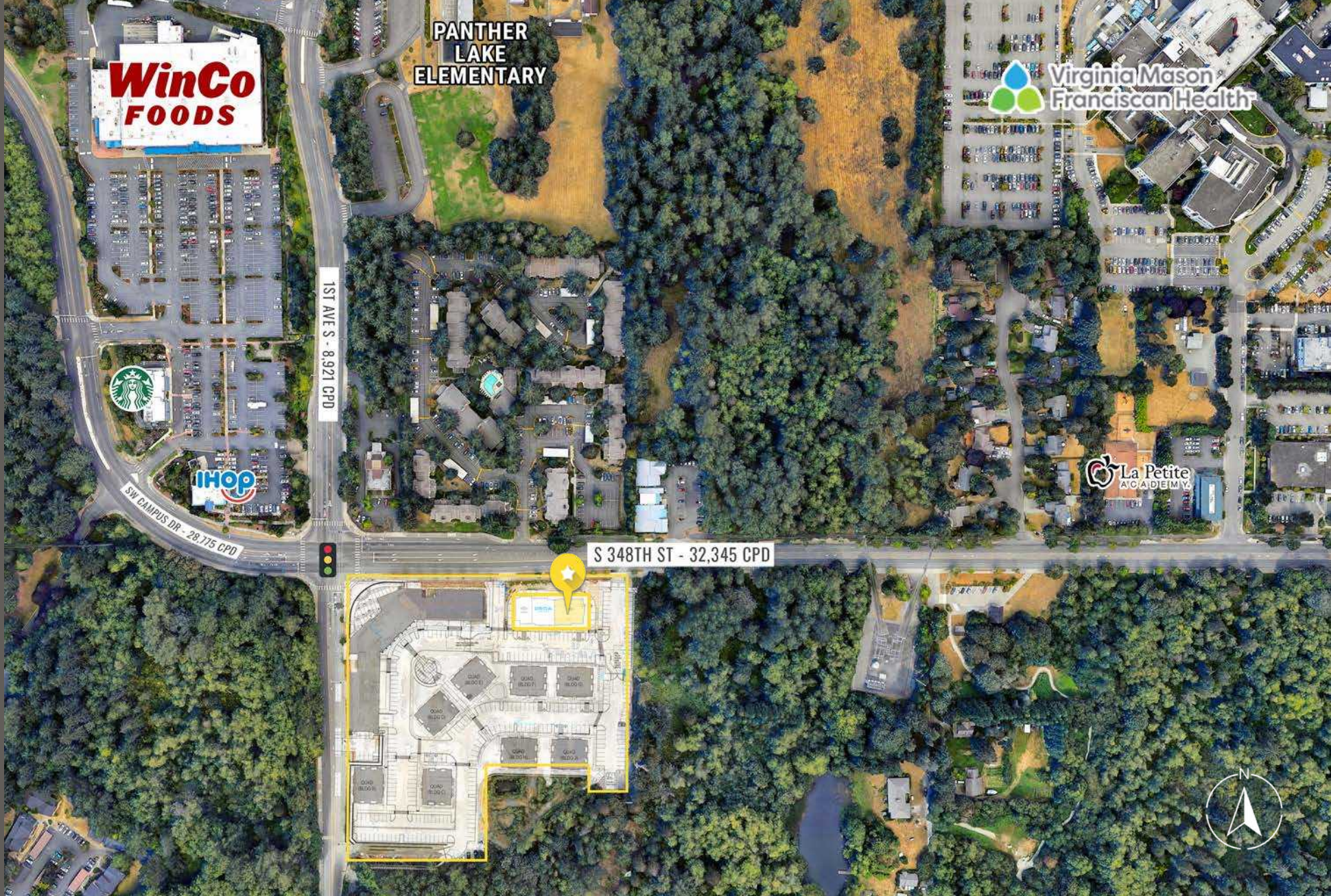
NEARBY TENANTS



RENDERINGS



LOCATION AERIAL



Across the Street from
St Francis Hospital



260 New Apartments
Nearby

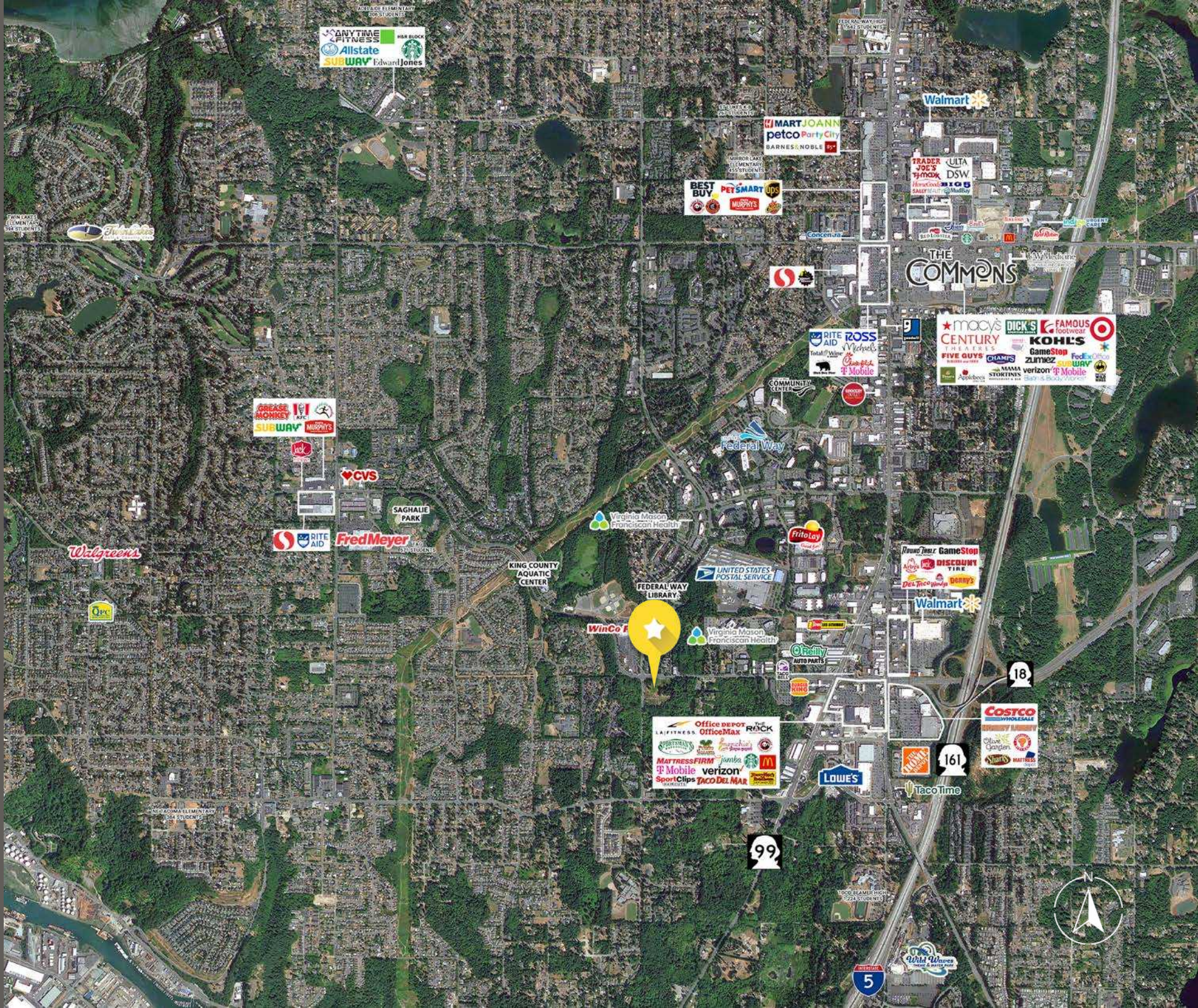


32,345 CPD
S 348th St

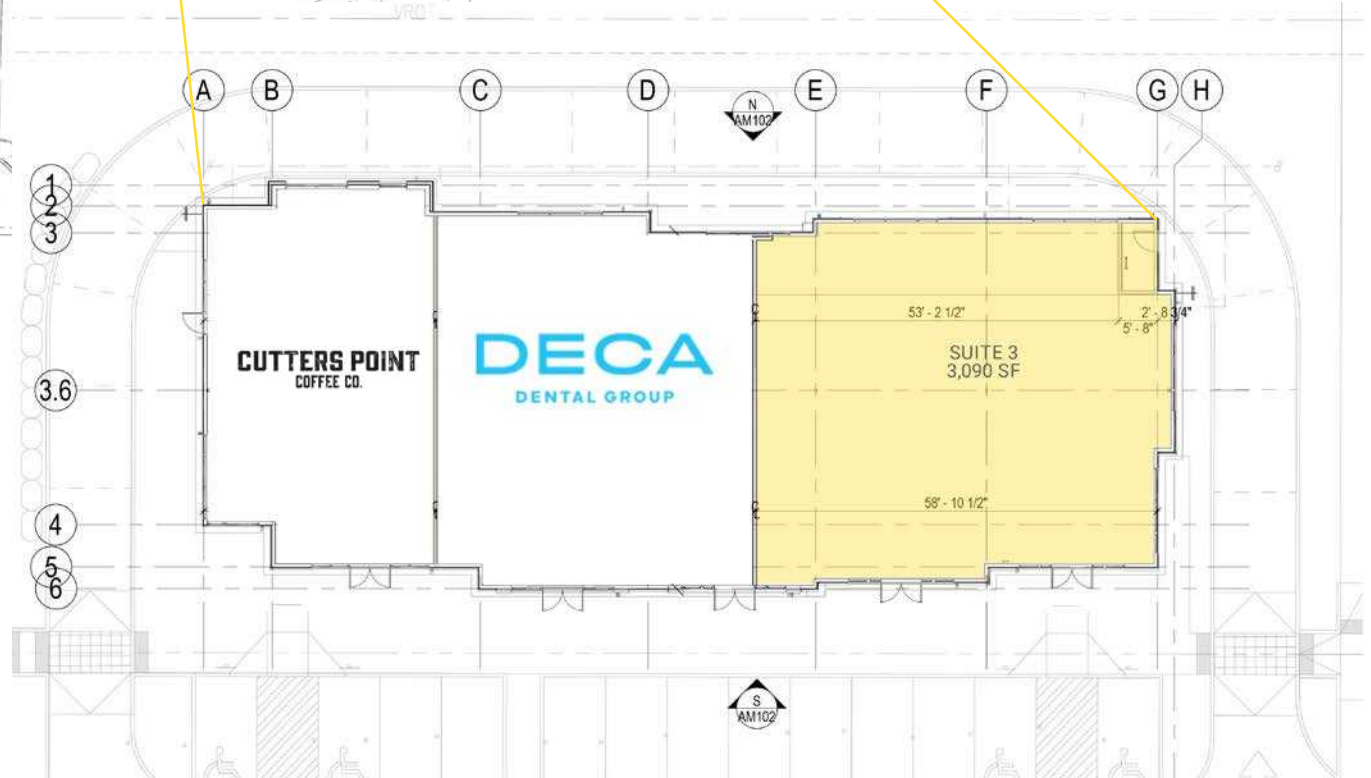
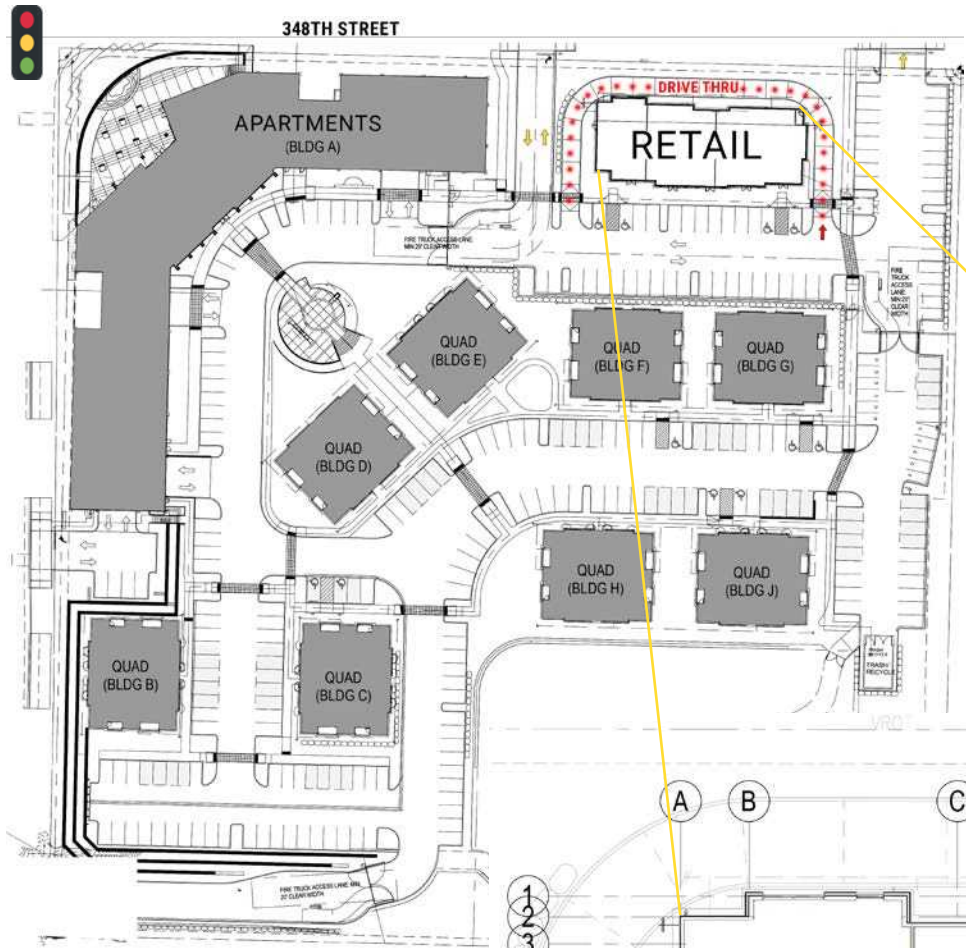


Near I-5 & HWY-18
Interchange (49,690 CPD)

LOCATION DETAILS



SITE PLAN



TACOMA | KIRKLAND | PORTLAND | SEATTLE

RELATIONSHIP FOCUSED.
RESULTS DRIVEN.

JOSH PARNELL

📞 253.284.3630

✉️ josh@firstwesternproperties.com

JUSTIN HOLMES

📞 253.447.2282

✉️ justin@firstwesternproperties.com

First Western Properties—Tacoma Inc. | 253.472.0404
6402 Tacoma Mall Blvd, Tacoma, WA 98409 | fwp-inc.com

© First Western Properties, Inc. DISCLAIMER: The above information has been secured from sources believed to be reliable, however, no representations are made to its accuracy. Prospective tenants or buyers should consult their professional advisors and conduct their own independent investigation. Properties are subject to change in price and/or availability without notice.

