

FOR LEASE

# RETAIL SPACE

STADIUM PLACE

155 S KING STREET, SEATTLE, WA 98134

AVAILABLE NOW



FOR MORE INFORMATION PLEASE CONTACT:

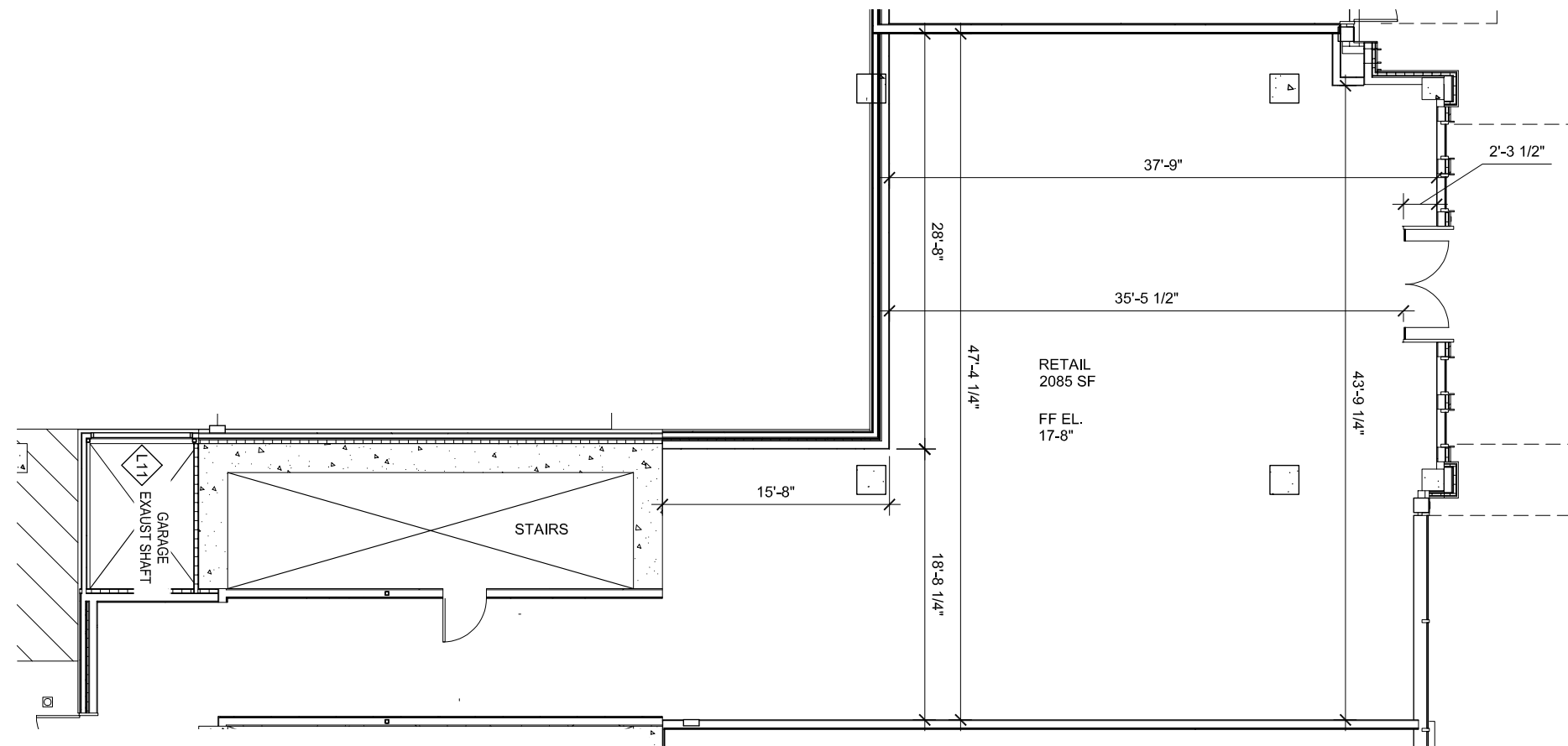
**LAURA MILLER**  
laura@gibraltarusa.com  
206.351.3573

**TRACY CORNELL**  
tracyc@gibraltarusa.com  
206.948.0630

 **GIBRALTAR**  
INVESTMENT PROPERTY SOLUTIONS

# 155 S KING

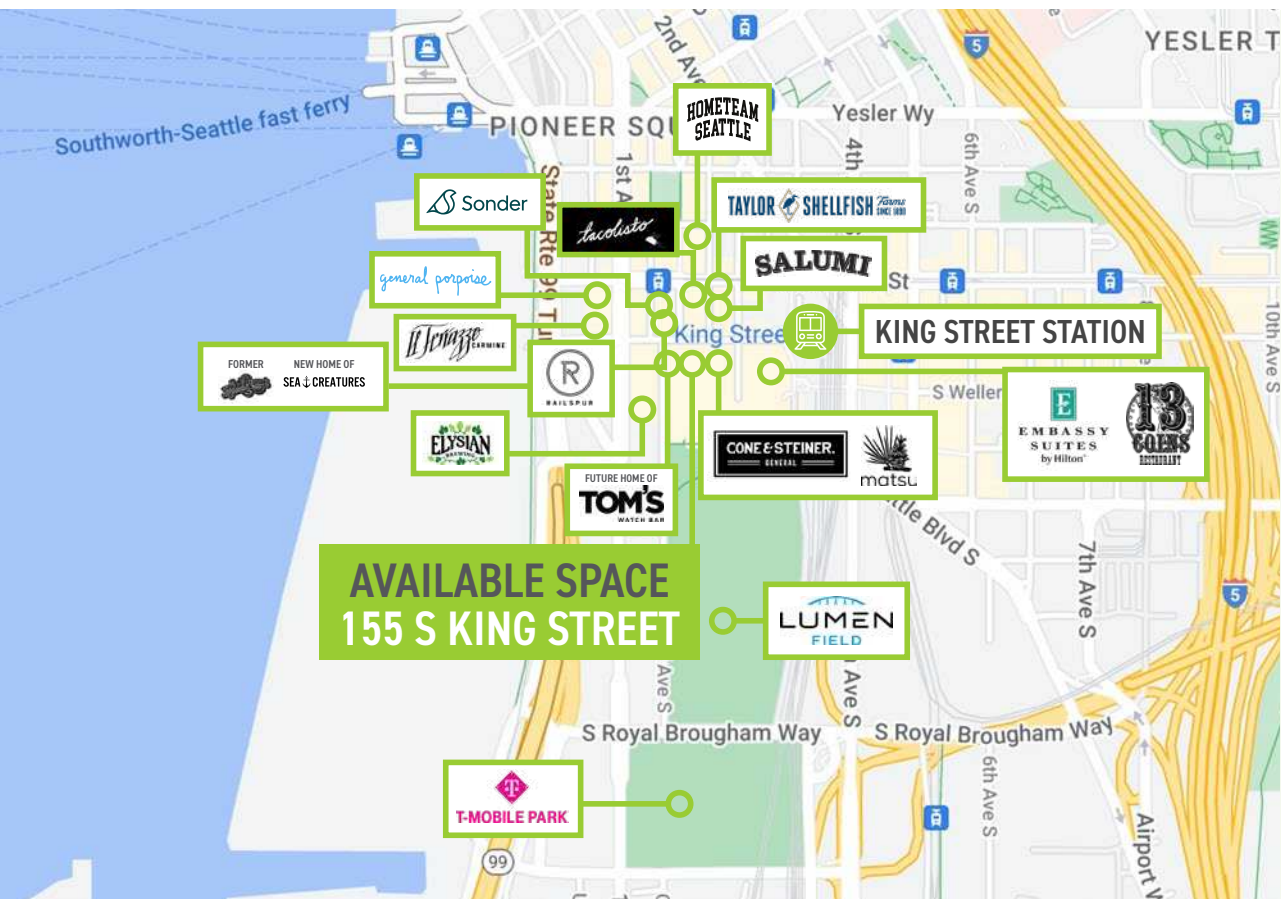
AVAILABLE (DATE)	SQ FT	BASE RENT	2024 NNN	COMMENTS
Now	2,085	\$28/SF	\$8.11/SF	<ul style="list-style-type: none"><li>• Landlord converting a portion of leasing office to retail</li><li>• Parking available for employees - \$325/month per stall</li><li>• Landlord to provide all base building utilities</li><li>• Perfect for service, medical, or cafe</li></ul>



SOUTH KING STREET







### DEMOGRAPHICS

98

WALK SCORE

88

BIKE SCORE

100

TRANSIT SCORE

4,300

RESIDENTS IN PIONEER SQUARE

6M

VISITORS ANNUALLY TO T-MOBILE & LUMEN FIELD

## PIONEER SQUARE

Pioneer Square is one of the oldest neighborhoods in the city. Known for its art galleries and cultural events. It is host to over 800 sporting and cultural events at Lumen Field and T-Mobile Park, including the FIFA World Cup starting in June 2026. The trade area is easily accessible by the light rail one block from the site and is adjacent to the International District.

In recent months, it has been announced that Urban Village's project, RailSpur, will welcome Death + Co and a 12,000 SF new Sea Creatures (Renee Erickson concept) concept. In addition, Tom's Watch Bar will plant their flagship in the former Quality Athletics space.

In addition, the neighborhood will see a boost in tourism and diversity with the re-opening of the new Seattle Waterfront. Stadium Place Project is a mixed-use project with close to 500 residential units and is adjacent to Lumen Field.

John tenants such as Sonder Hotel, Caffè Umbria, Tom's Watch Bar, a 120-key boutique hotel (coming soon), Cone & Steiner, and new concept by The Coupe & Flute operators.