

FOR LEASE

5631 208TH ST SW, SUITE B

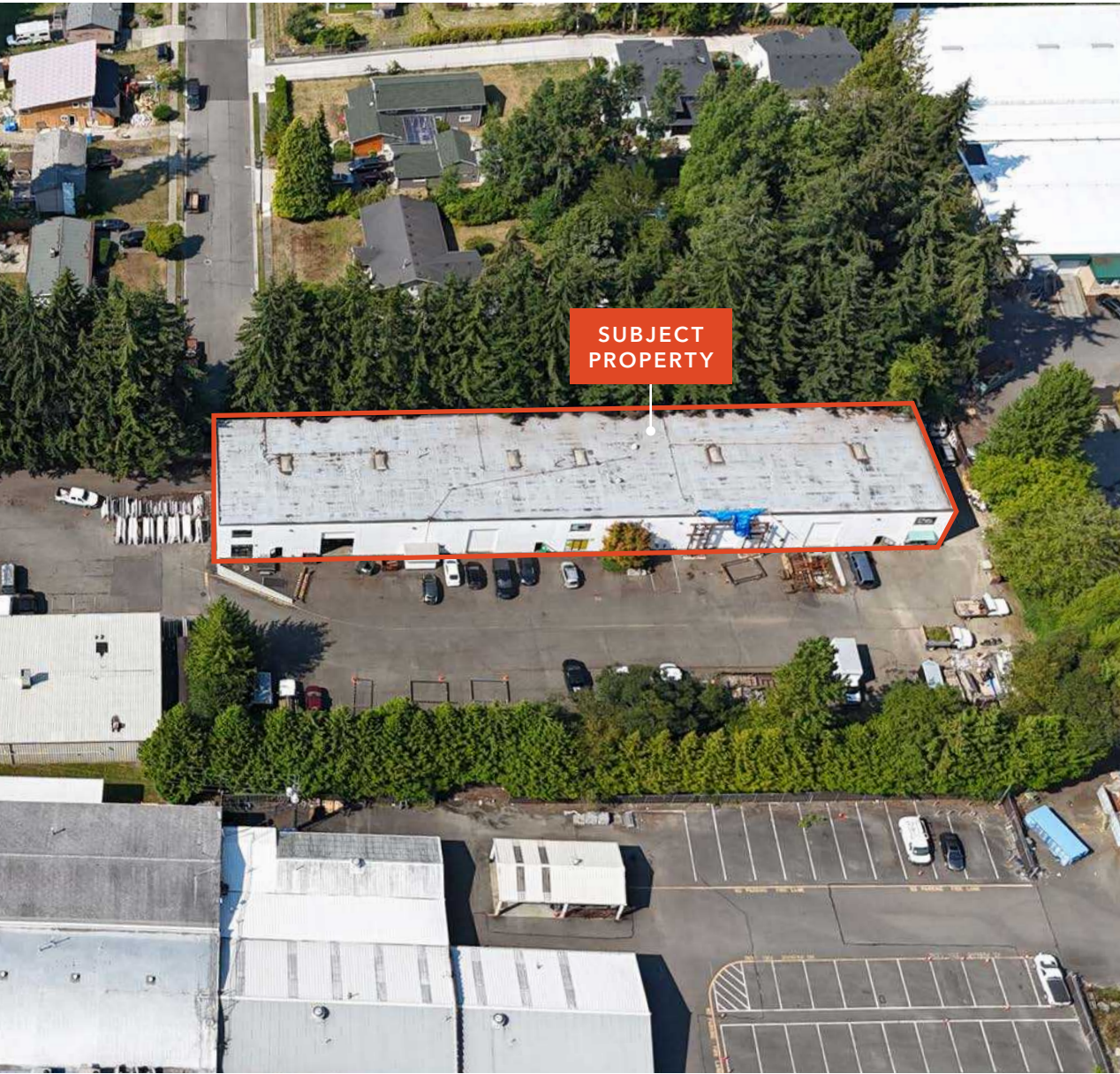
*18,000 SF Warehouse with
office for lease in Lynnwood*



5631 208TH ST SW, SUITE B, LYNNWOOD, WA

km Kidder
Mathews

5631 208TH ST SW, SUITE B



*Great opportunity to lease
Warehouse space in the heart
of Lynnwood, WA*

Address: 5631 208th St SW, Suite B, Lynnwood,
WA 98036

18,000 SF total

Approximately 3,000 SF of office space

3 grade-level doors

2 dock-high doors

Rate: \$1.25 + NNN

Great access to I-5

18,000 SF

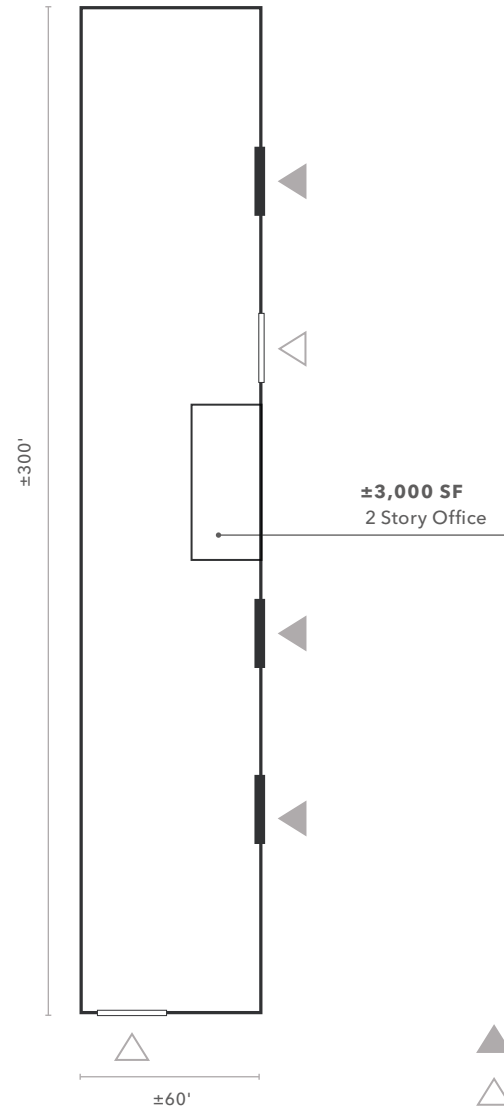
TOTAL SF

\$1.25

LEASE RATE + NNN

SITE PLAN

Suite B



18,000 SF

TOTAL SF

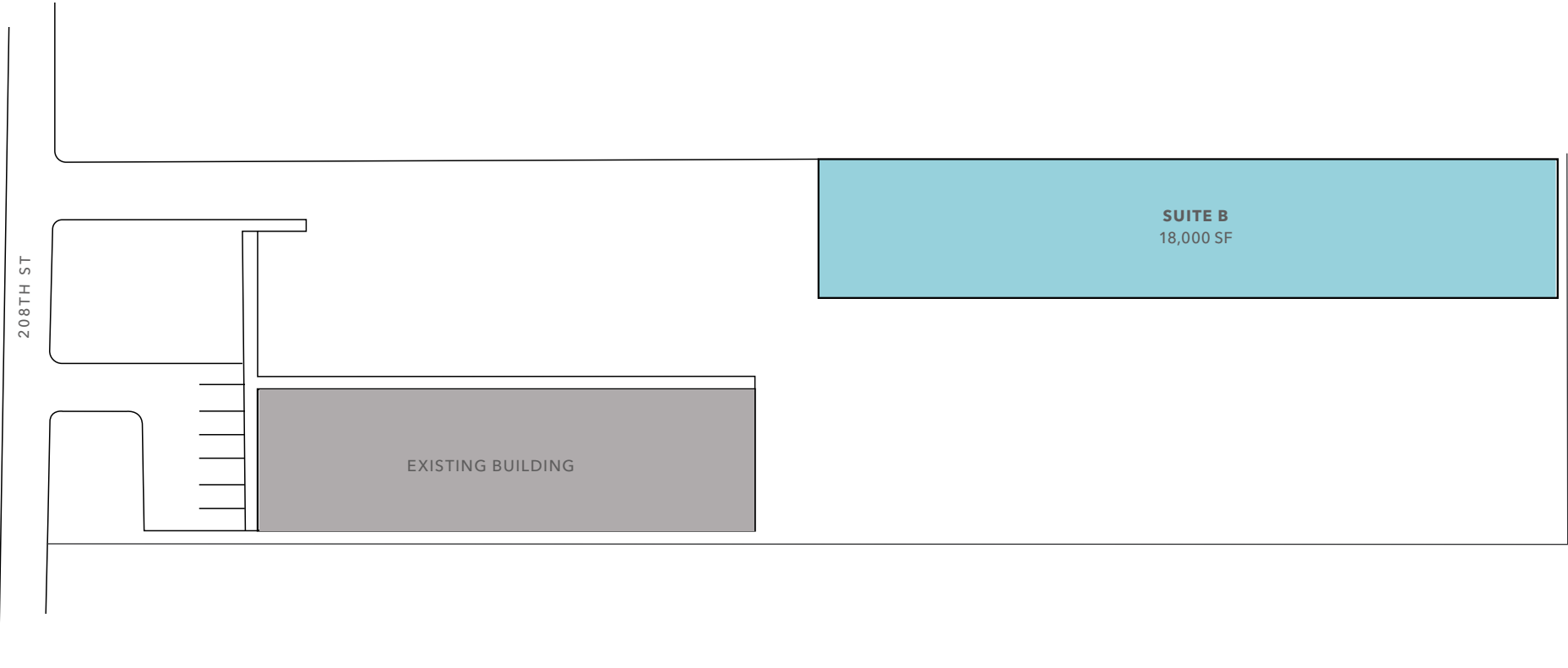
$\pm 3,000$ SF

OFFICE SPACE

NOW

AVAILABLE

AREA SITE PLAN



18,000 SF

TOTAL SF

\$1.25/SF

LEASE RATE + NNN

5631 208TH ST SW, SUITE B





Exclusively listed by

COLTON TEGLOVIC

Vice President

425.281.5261

colton.teglovic@kidder.com

MATTHEW HAGEN, SIOR

Executive Vice President

425.283.5782

matt.hagen@kidder.com

KIDDER.COM