

EMERALD LOGISTICS

6220 S 287TH STREET // AUBURN, WA 98001

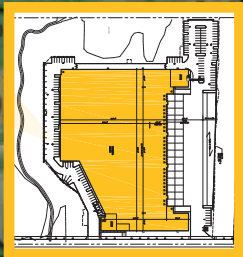
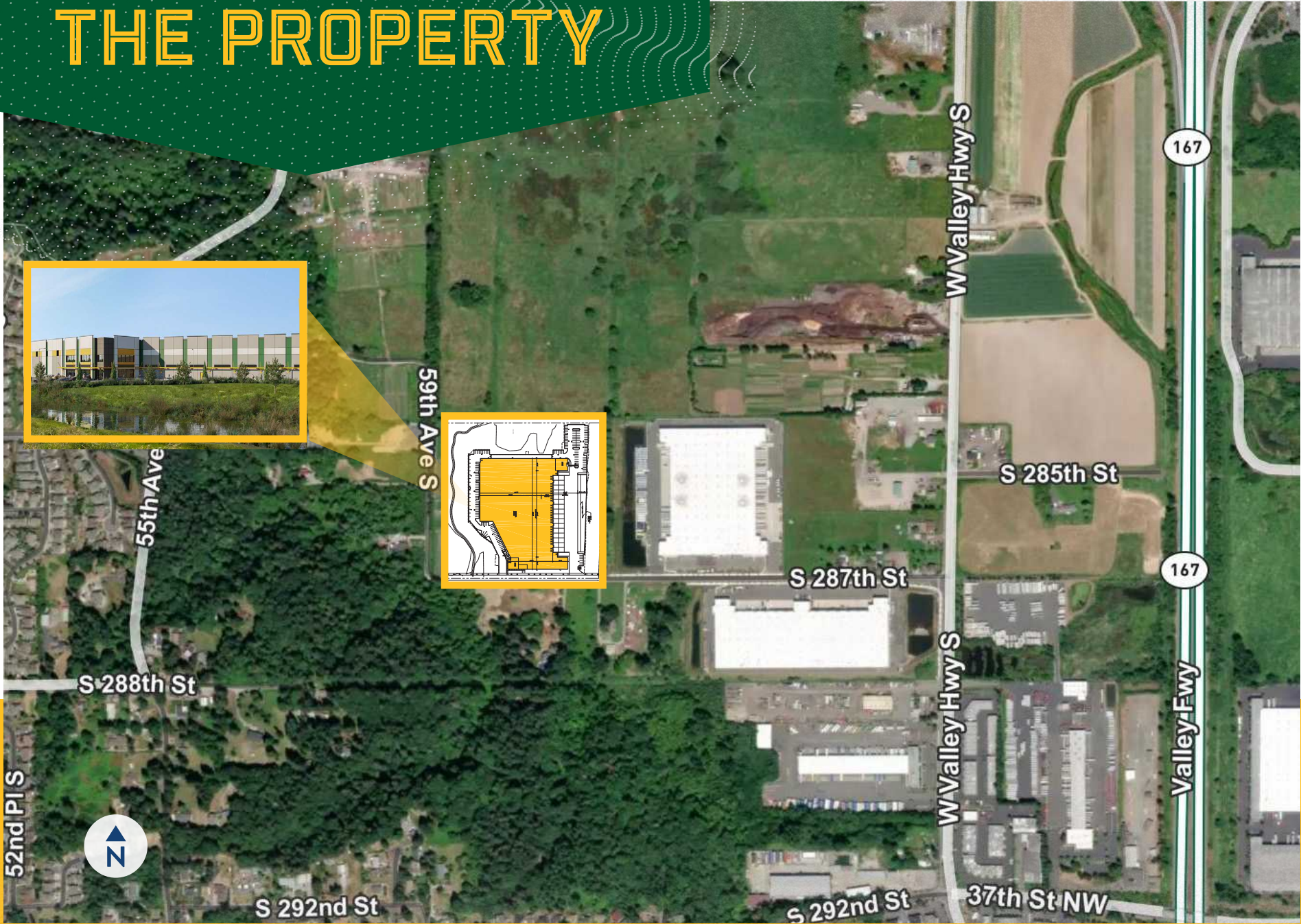
INDUSTRIAL FOR LEASE: NEW 201,955 SF CLASS A DEVELOPMENT

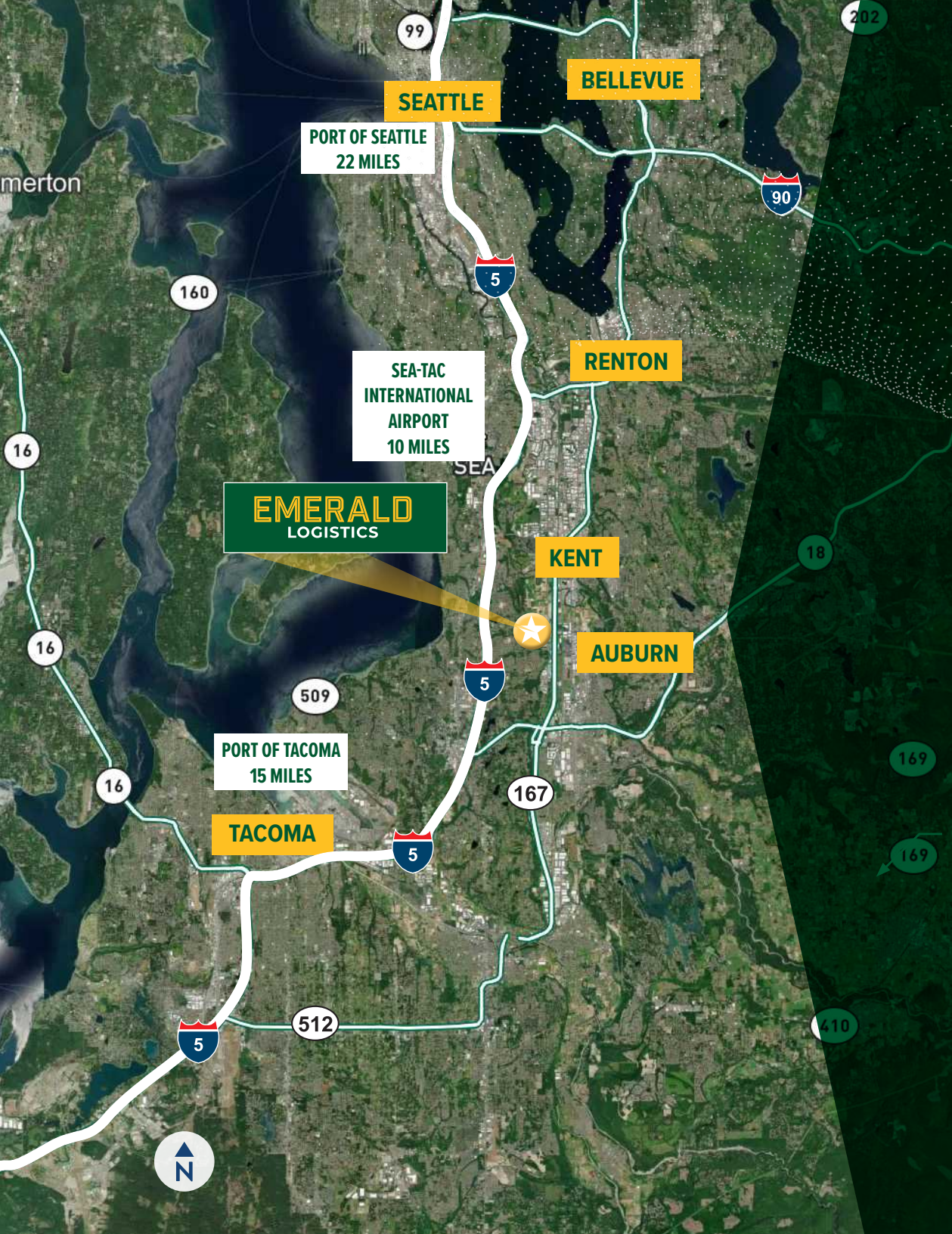


CBRE



THE PROPERTY





AREA OVERVIEW

DRIVE TIMES TO AND FROM AUBURN



TO HWY 167

4 MINUTES



TO I-5

10 MINUTES



TO SEATAC AIRPORT

24 MINUTES



TO PORT OF TACOMA

23 MINUTES



TO PORT OF SEATTLE

35 MINUTES

SITE PLAN

BUILDING SPECS



Shell:
201,955 SF



Office:
BTS



Height:
36'



Dock-High Doors:
28



Grade-Level Doors:
4



Fully SEPA Approved

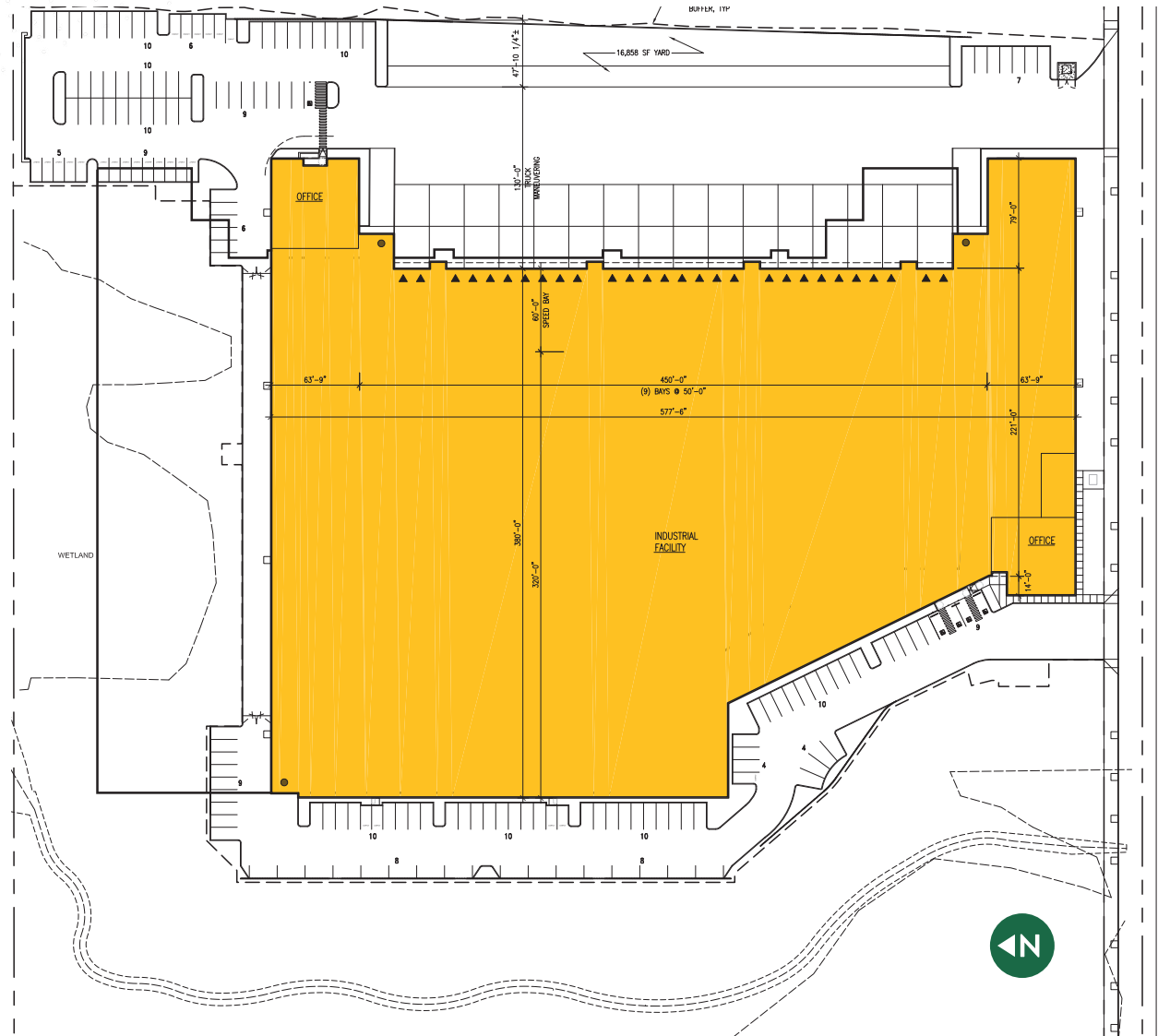


Delivery Date:
Q4 2025



▼ DOCK-HIGH DOORS

● GRADE-LEVEL DOORS



EMERALD

LOGISTICS

6220 S 287TH STREET // AUBURN, WA 98001

LEASING CONTACTS

ANDREW STARK | Executive Vice President | +1 206 442 2746 | andrew.stark@cbre.com

ZAC SNEDEKER | Senior Vice President | +1 425 444 0133 | zac.snedeker@cbre.com



CBRE

© 2024 CBRE, Inc. The information contained in this document has been obtained from sources believed reliable. While CBRE, Inc. does not doubt its accuracy, CBRE, Inc. has not verified it and makes no guarantee, warranty or representation about it. It is your responsibility to independently confirm its accuracy and completeness. Any projections, opinions, assumptions or estimates used are for example only and do not represent the current or future performance of the property. The value of this transaction to you depends on tax and other factors which should be evaluated by your tax, financial and legal advisors. You and your advisors should conduct a careful, independent investigation of the property to determine to your satisfaction the suitability of the property for your needs. CBRE and the CBRE logo are service marks of CBRE, Inc. and/or its affiliated or related companies in the United States and other countries. All other marks displayed on this document are the property of their respective owners. PMStudio_April 2024