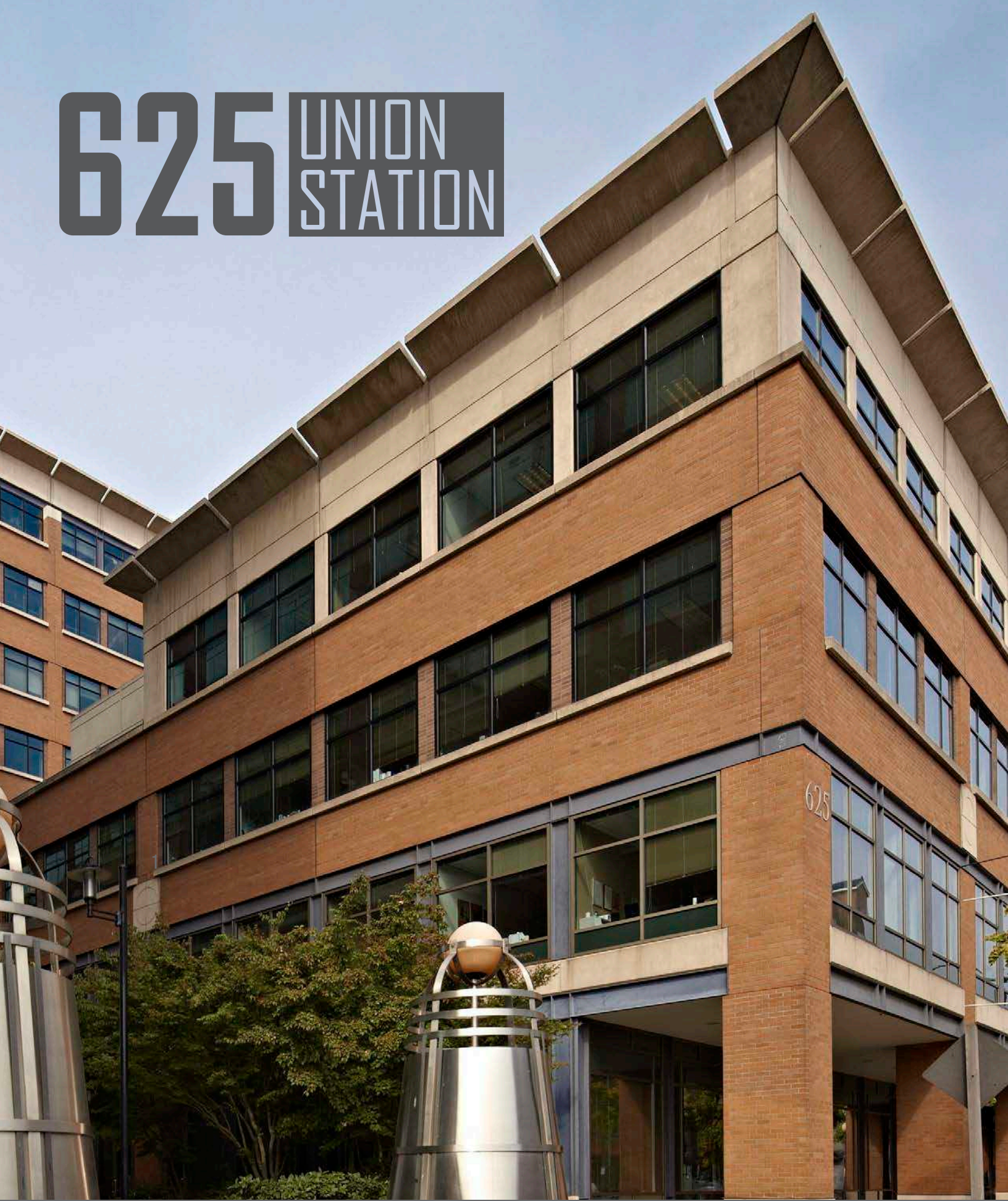


625 UNION STATION



OFFICE SPACE FOR LEASE

CBRE

625 UNION STATION

PROJECT FEATURES



Situated atop the best transit hub in Seattle with access to light rail, buses, streetcar and commuter trains



Achieved the WELL Health-Safety Rating



LEED® Platinum Certified



On-site retail includes Wells Fargo and Tous Les Jours Bakery



On-site fitness center offering yoga and fitness classes and personal training



Showers, lockers and bike storage



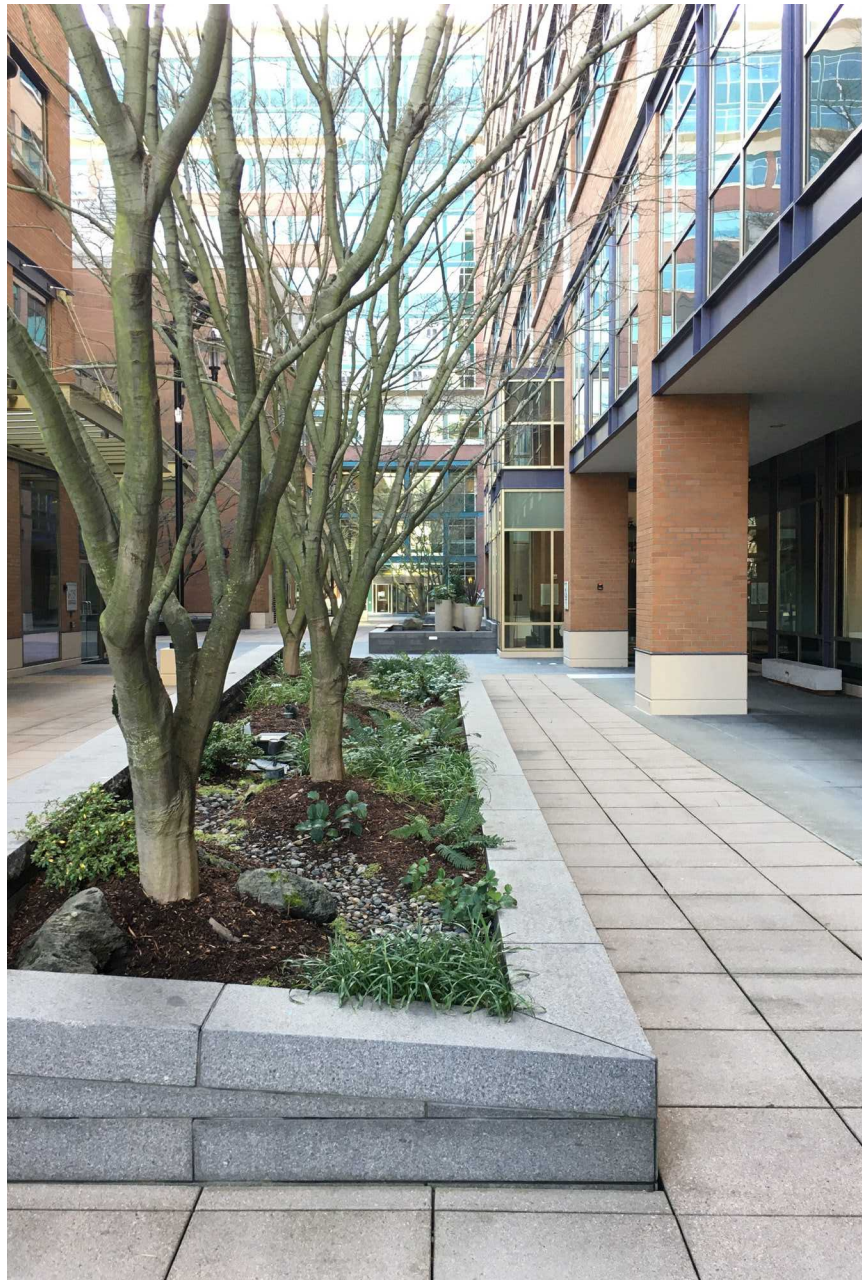
Parking ratio 1/1,000 SF



On-site property management and security



Flexible, open floor plates



UNION STATION HIGHLIGHTS



BEST TRANSIT HUB IN THE CITY



100 Transit Score[®]
from Walkscore.com



100+ bus
routes nearby



Link Light Rail
directly below



Sounder commuter
rail and Amtrak trains
across the street



Seattle Streetcar
First Hill Line picks up
on 5th & Jackson



Ferries and water
taxi less than one
mile away



WORLD-CLASS AMENITIES



Walking distance to Pioneer Square
and the International District



Numerous restaurants, shops,
and bars within a four-block radius



Across the street from Uwajimaya
Village, with groceries, a bookstore
and an international food court



Short walk to sports and
other events at Lumen Field,
WaMu Theater and T-Mobile Park



EASY ACCESS



Easy access to SR-99,
I-90 and I-5



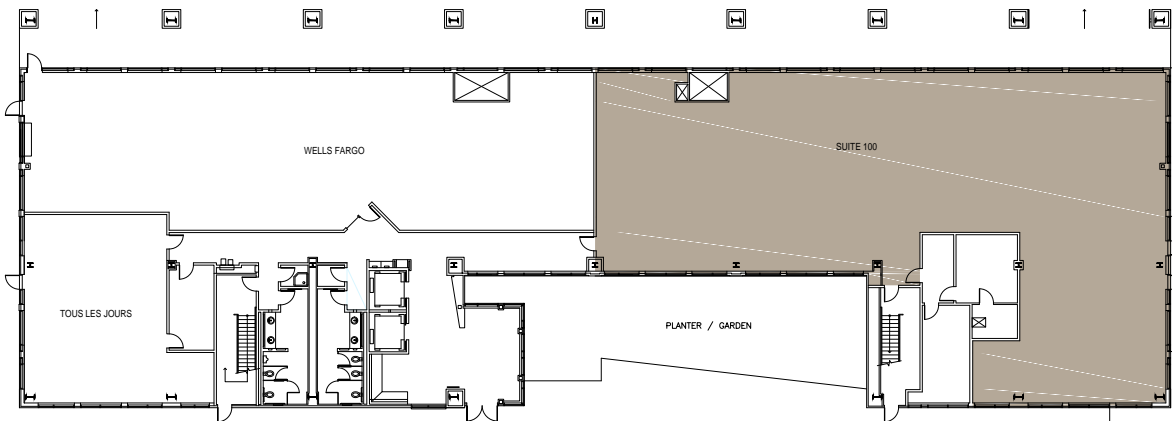
99 Walk Score[®] from
Walkscore.com



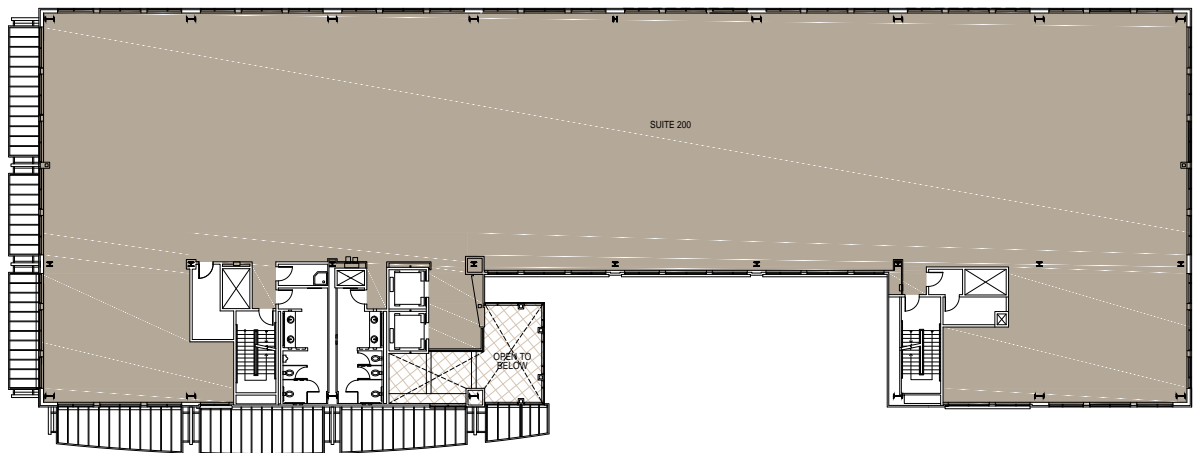
Relatively flat with
good bike lanes

625 UNION STATION

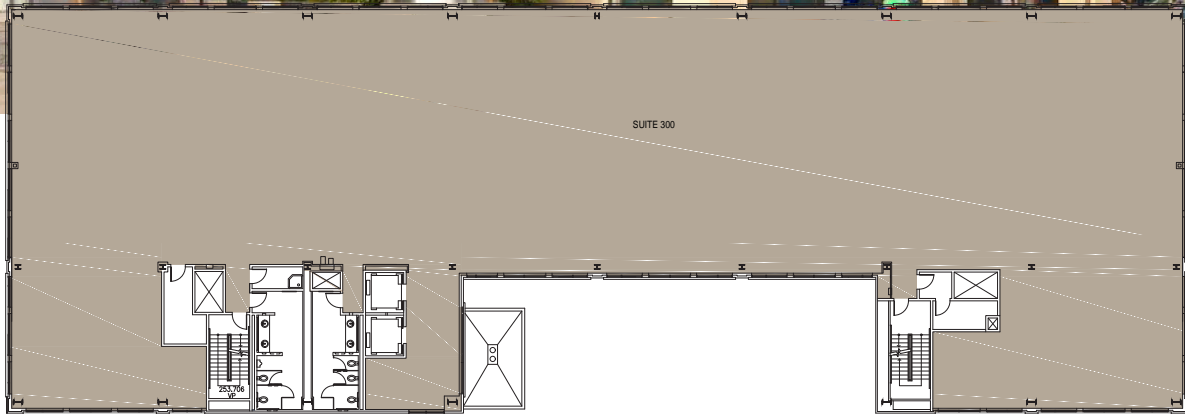
UP TO 59,073 SF OF CONTIGUOUS SPACE
AVAILABLE AT 625 UNION STATION



SUITE 100
» ±7,510 SF



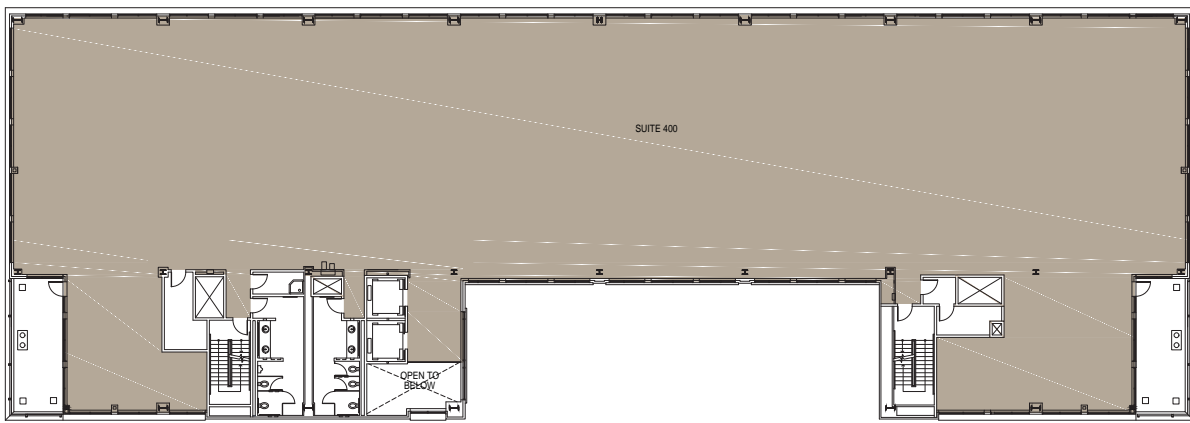
SUITE 200
» ±17,464 SF



SUITE 300

← N

SUITE 300
» ±17,685 SF

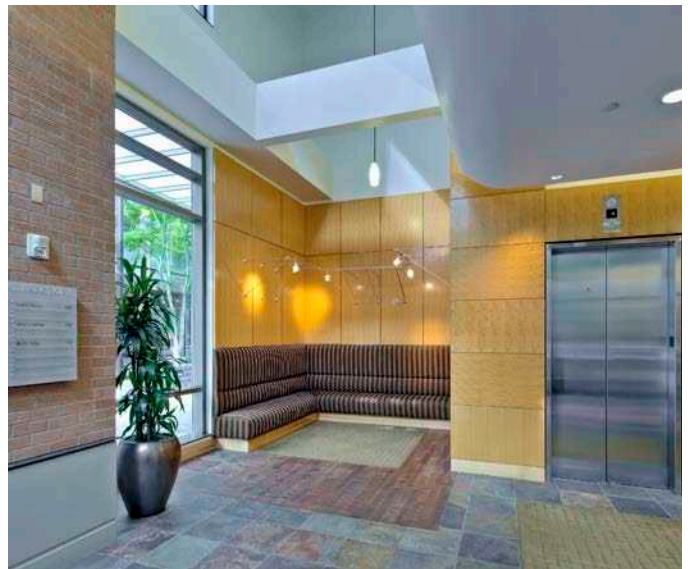
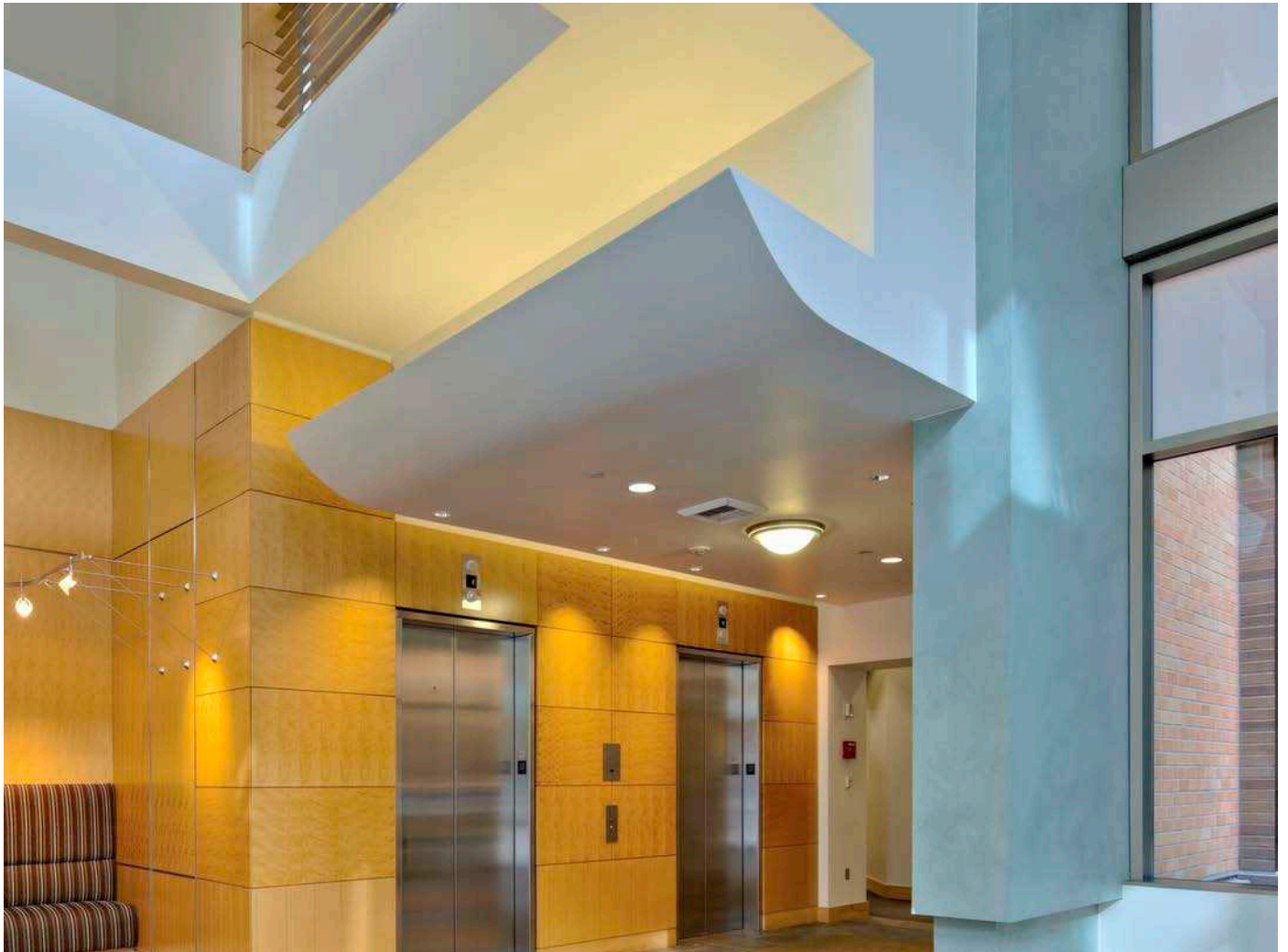


SUITE 400

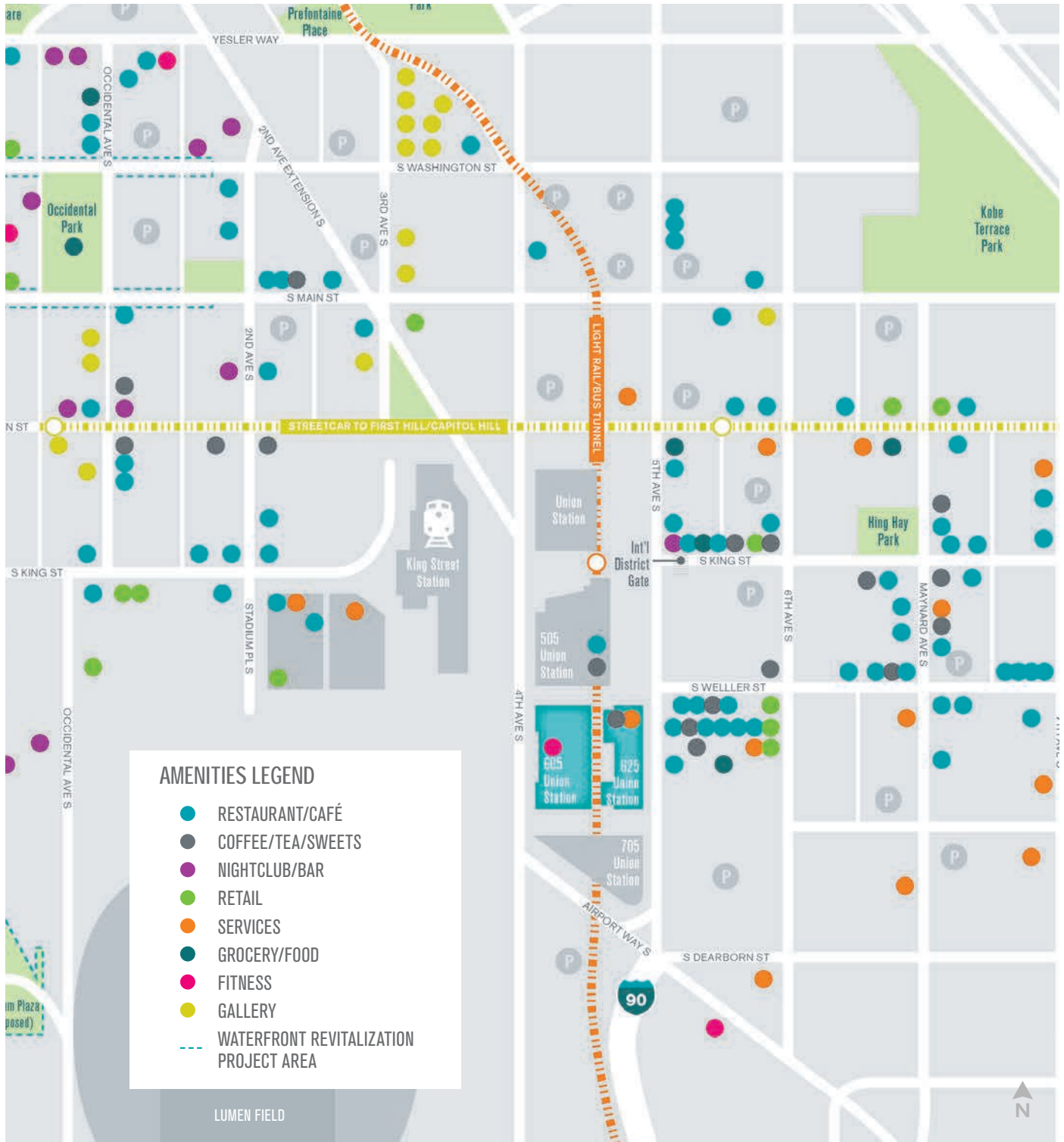
← N

SUITE 400
» ±16,414 SF

625 UNION STATION



NEIGHBORHOOD AMENITIES





625 UNION STATION

625 UNION STATION

625 5th Avenue S, Seattle, WA 98104 • seattleunionstation.com

For leasing information:

SCOTTA ASHCRAFT
Senior Vice President
+1 206 292 6063
scotta.ashcraft@cbre.com

NICK CARKONEN
Senior Vice President
+1 206 292 6039
nick.carkonen@cbre.com

CBRE, Inc.
1420 5th Avenue
Suite 3800
Seattle, WA 98101

CBRE

© 2024 CBRE, Inc. All rights reserved. This information has been obtained from sources believed reliable, but has not been verified for accuracy or completeness. You should conduct a careful, independent investigation of the property and verify all information. Any reliance on this information is solely at your own risk. CBRE and the CBRE logo are service marks of CBRE, Inc. All other marks displayed on this document are the property of their respective owners, and the use of such logos does not imply any affiliation with or endorsement of CBRE. Photos herein are the property of their respective owners. Use of these images without the express written consent of the owner is prohibited. PMStudio_September2024