

NORTON BUILDING



NEWMARK



BUILDING HIGHLIGHTS



Class A Office building in the heart of downtown Seattle



On-Site Property Management



24-hour onsite security



On-Site Valet Parking Garage



Shower Facilities



Bike Storage

AVAILABILITIES

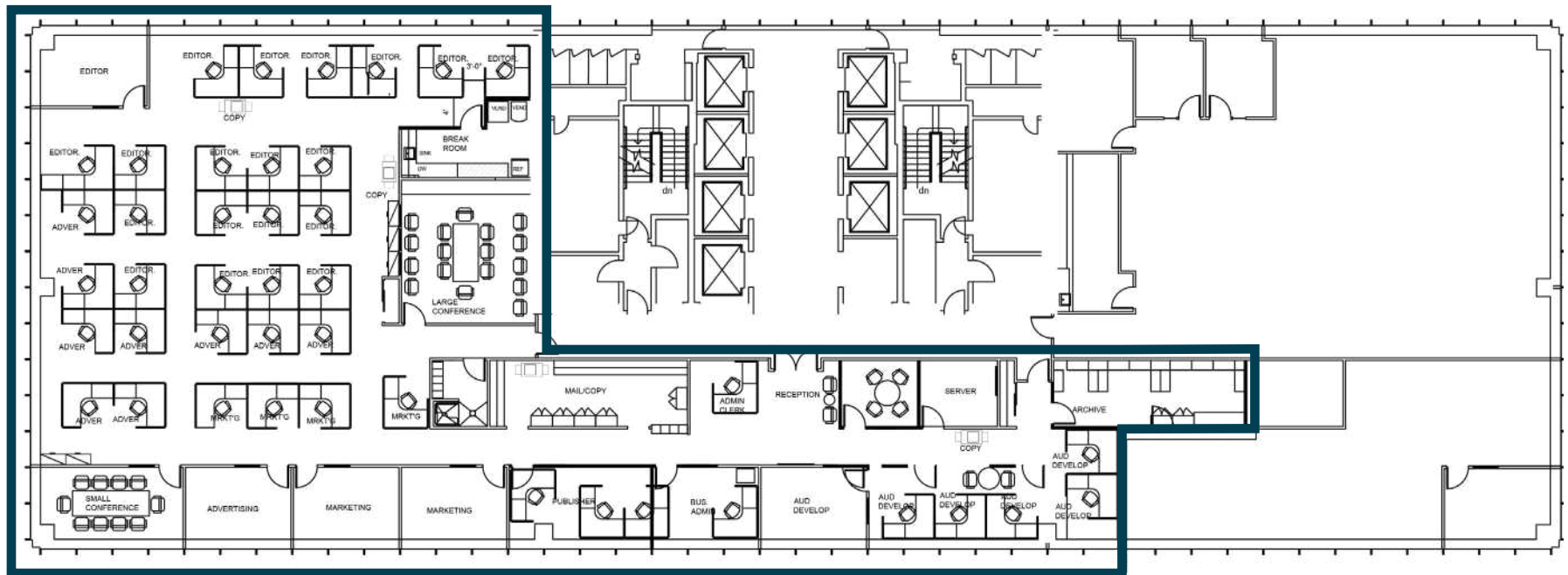
Suite	Available	RSF
210	Now	10,362 RSF
307	Now	1,402 RSF
600	Now	9,174 RSF
850	Now	7,356 RSF
900	Now	15,843 RSF
1050	Now	7,199 RSF
1150	Now	6,728 RSF
1210	Nov 1, 2024	7,597 RSF



AVAILABLE SPACE

Suite 210

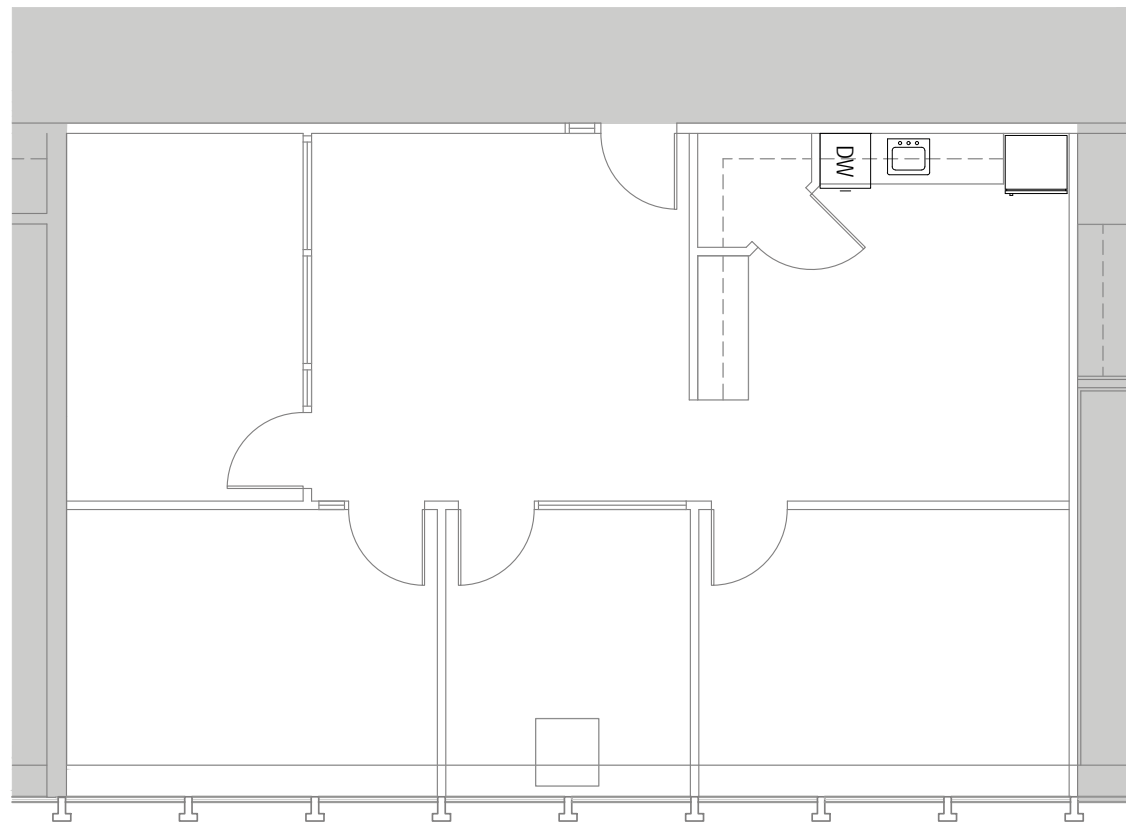
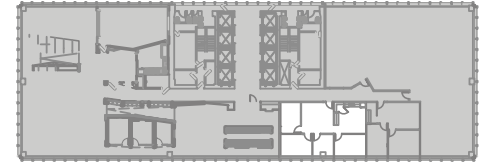
10,362 RSF | Available Now



AVAILABLE SPACE

Suite 307

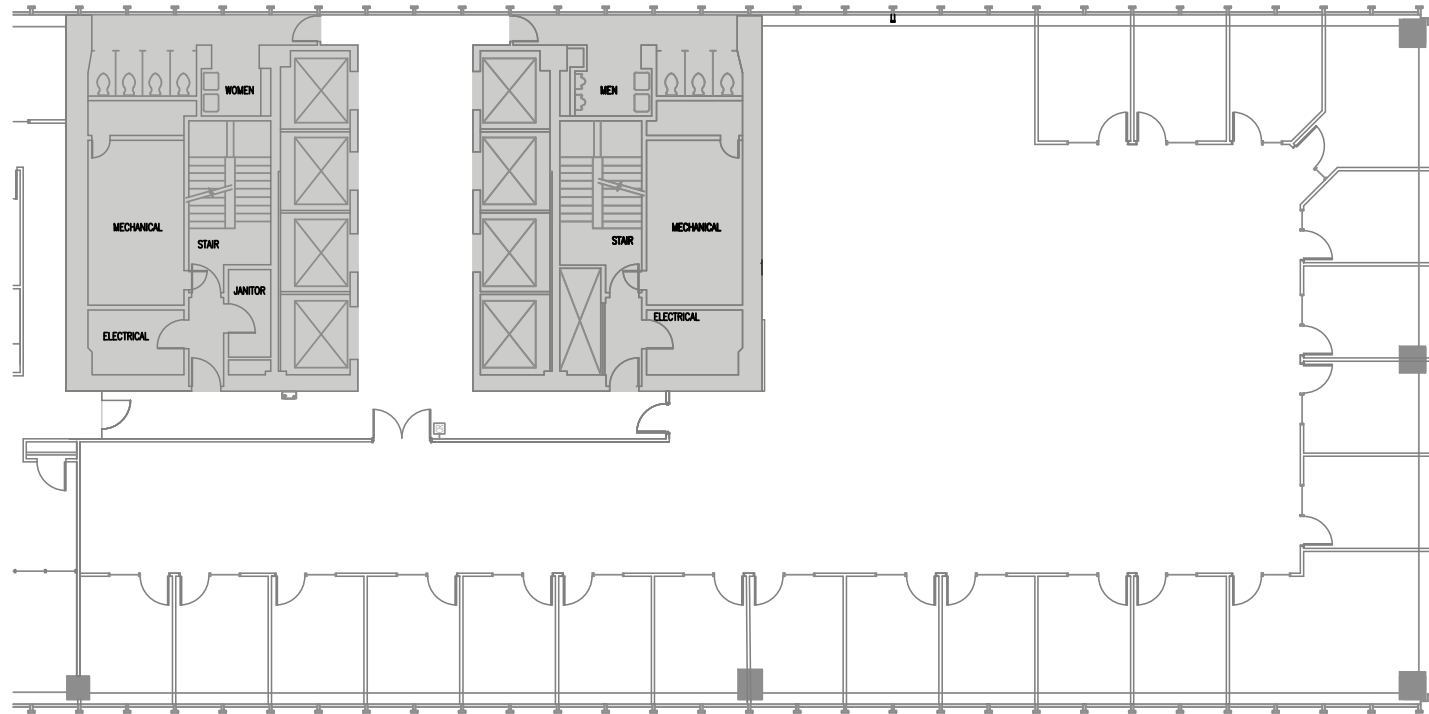
1,402 RSF | Available Now



AVAILABLE SPACE

Suite 600

9,174 RSF (divisible to 3,500 RSF) | Available Now

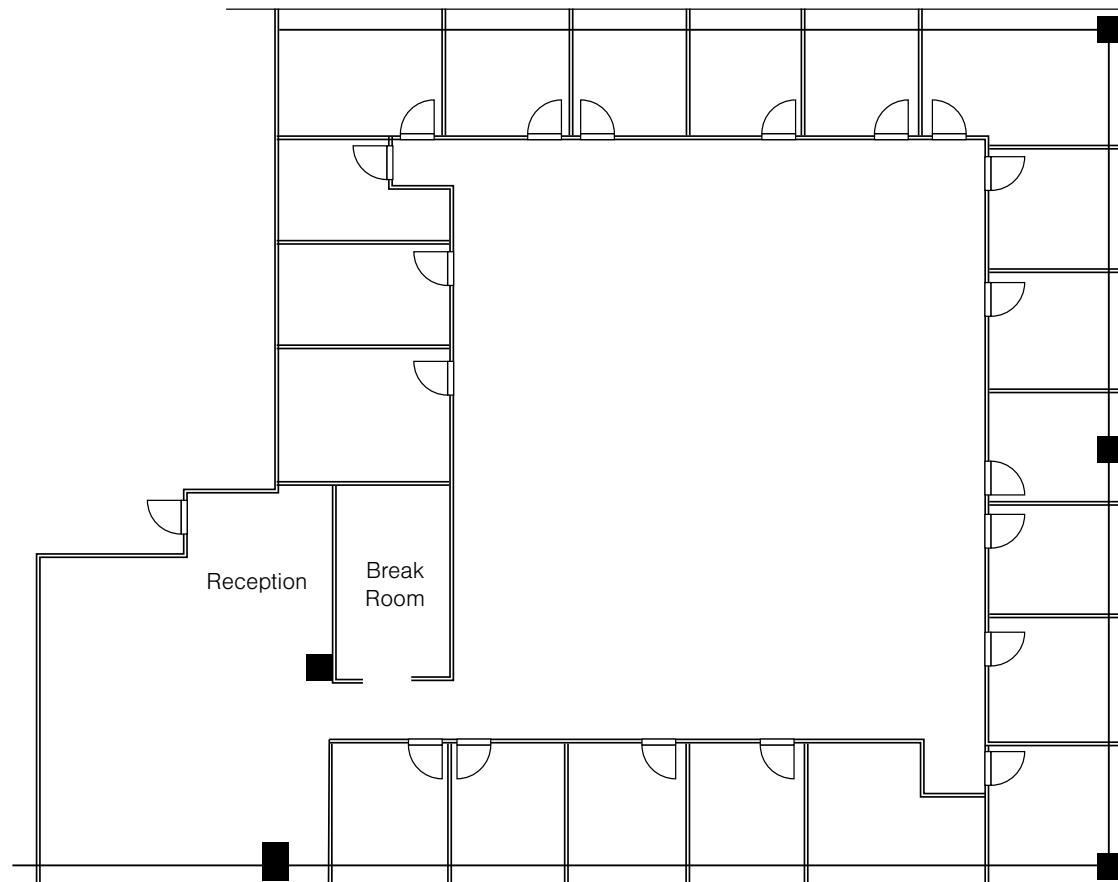


AVAILABLE SPACE

VIRTUAL TOUR

Suite 850

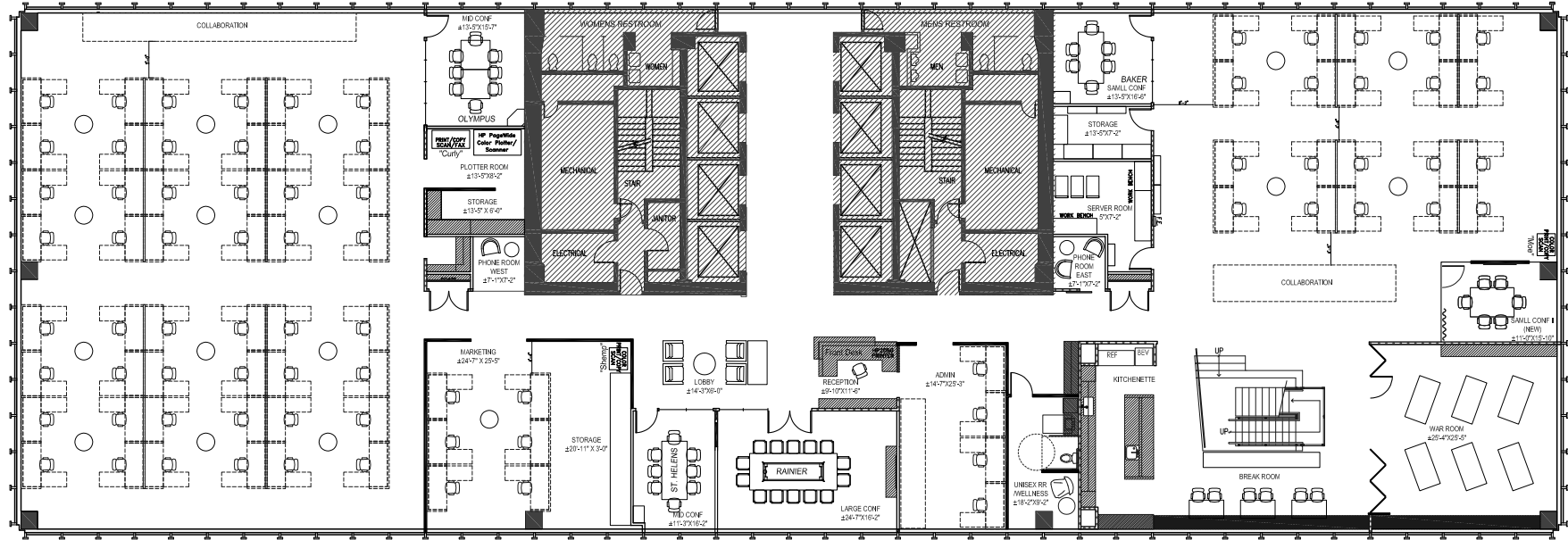
7,356 RSF | Available Now



AVAILABLE SPACE

Suite 900

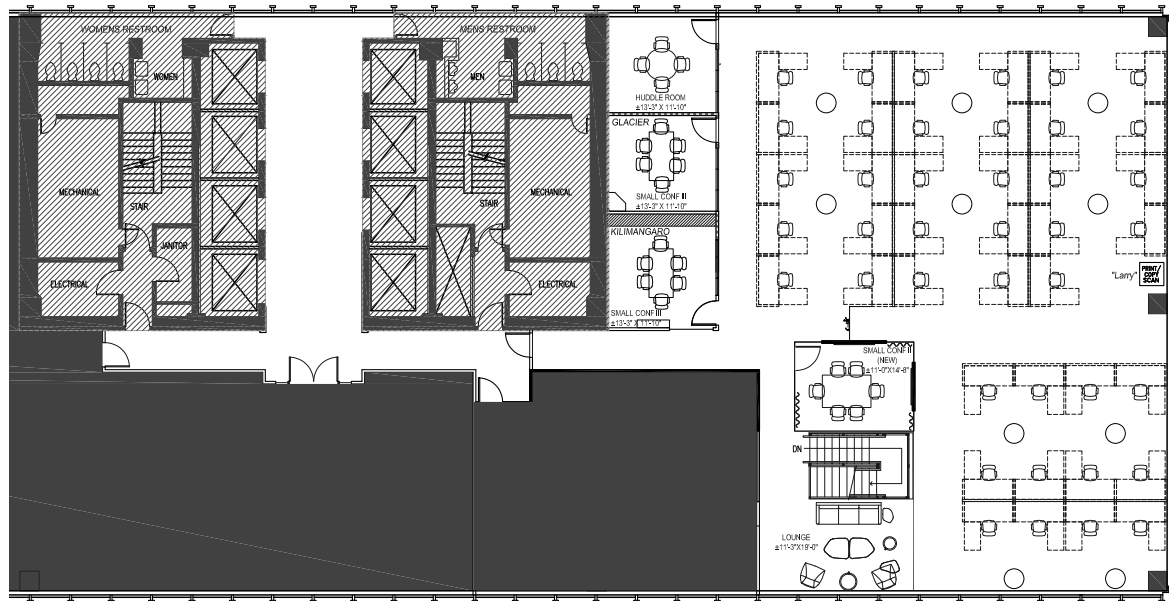
15,843 RSF | Available Now



AVAILABLE SPACE

Suite 1050

7,199 RSF | Available Now

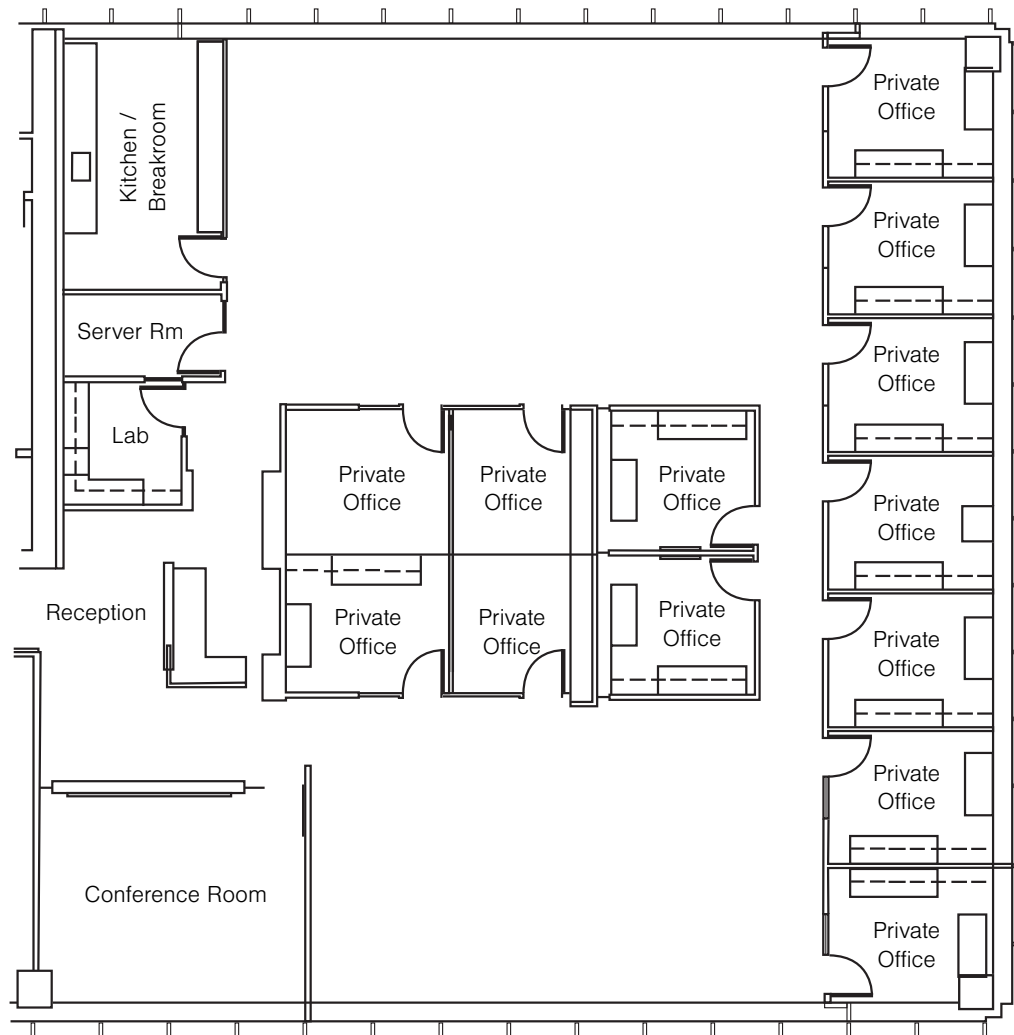


AVAILABLE SPACE

VIRTUAL TOUR

Suite 1150

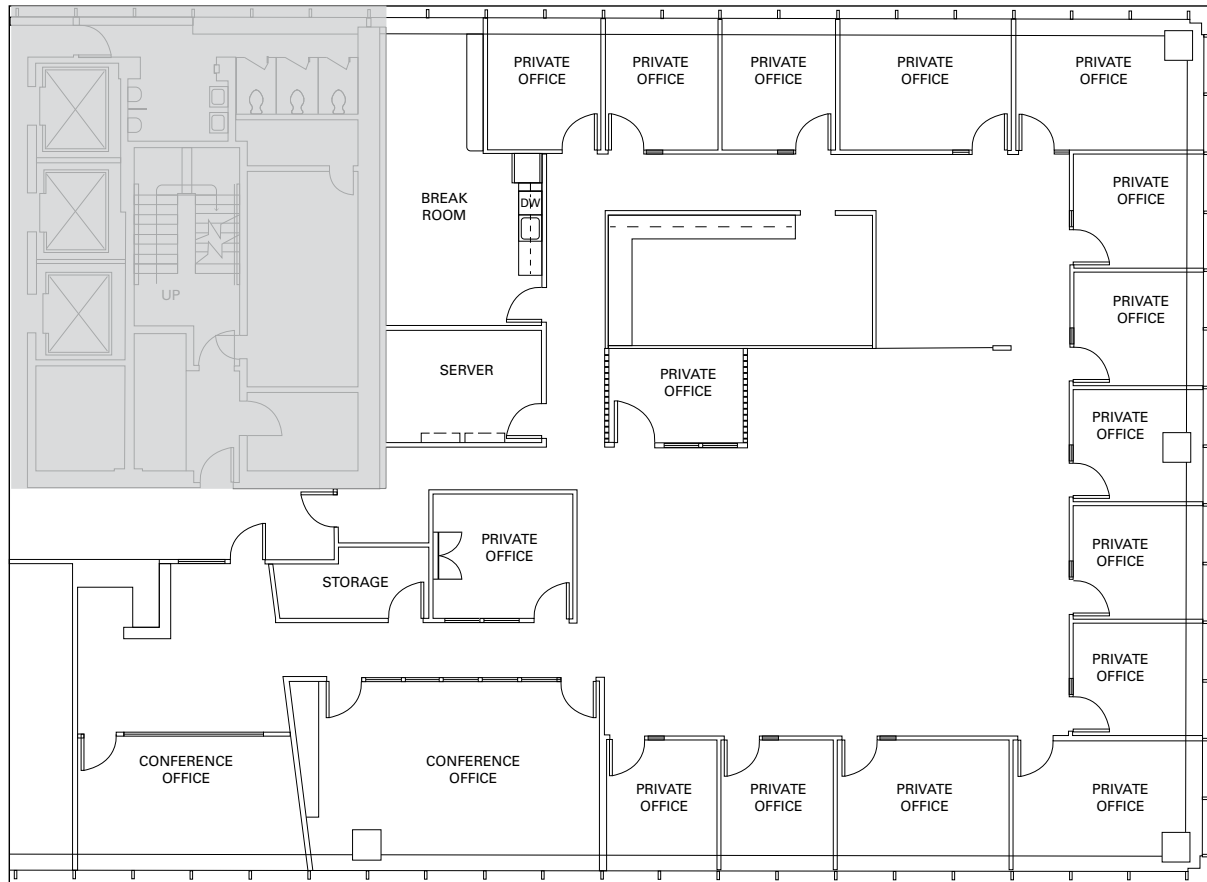
6,728 RSF | Available Now



AVAILABLE SPACE

Suite 1210

7,597 RSF | Available November 1, 2024

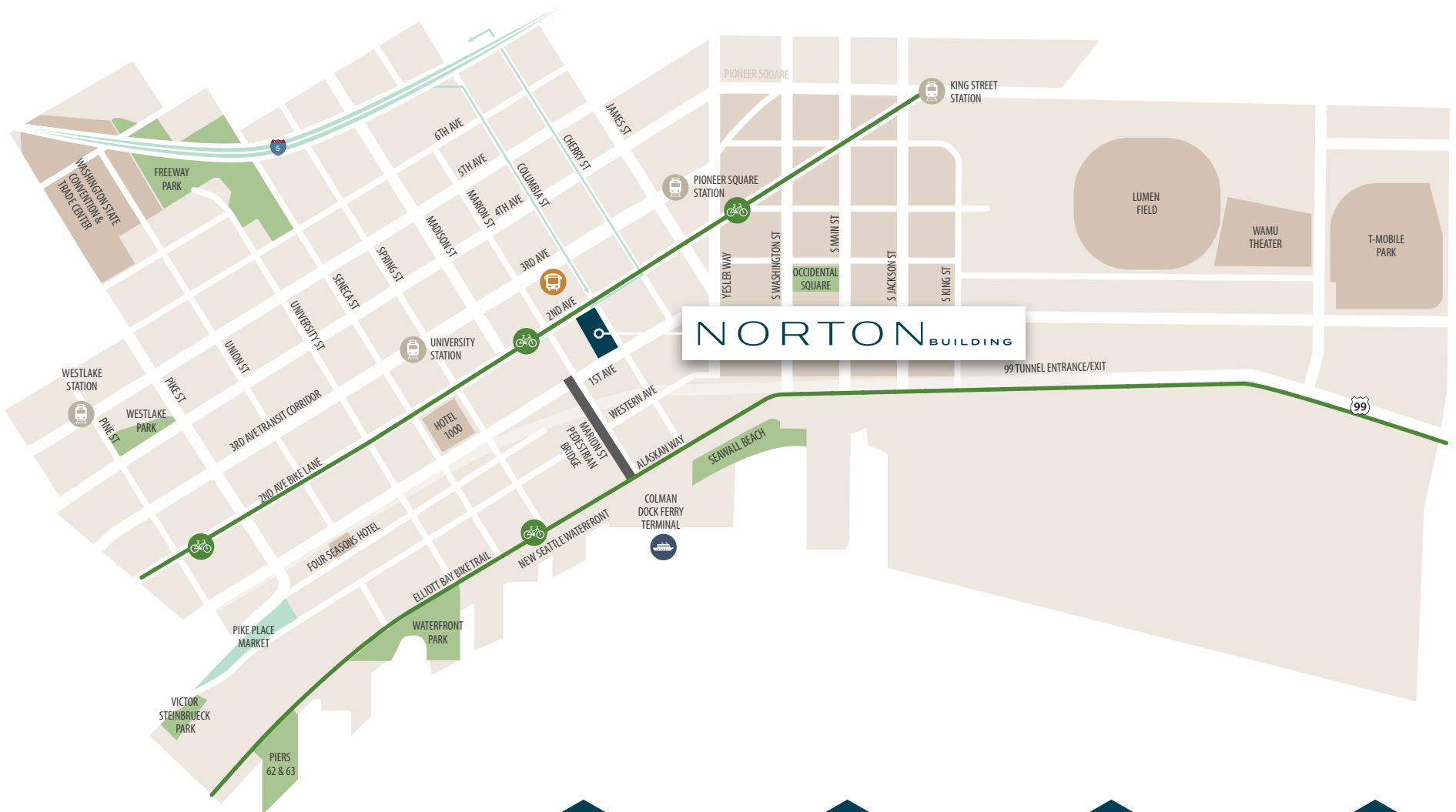


LOCATION

TRANSIT SCORE
100

WALK SCORE
98

BIKE SCORE
85



Walking Distance to Link Light Rail, Bus Lines, and Seattle Ferry Terminal



Easy access to I-90, I-5 and SR-99



2nd Ave Bike Lane



New Seattle Waterfront

SEATTLE WATERFRONT

Two blocks away from the new Seattle Waterfront. The project spans the waterfront from Pioneer Square to Belltown and will transform the area into a vibrant public space.



NORTON BUILDING



Jesse Ottele

Executive Managing Director
206-452-4529
jesse.ottele@nmrk.com

Cavan O'Keefe

Senior Managing Director
206-395-2903
cavan.okeefe@nmrk.com

NORTON BUILDING

801 2nd Avenue, Seattle, WA 98104

NEWMARK

The distributor of this communication is performing acts for which a real estate license is required. The information contained herein has been obtained from sources deemed reliable but has not been verified and no guarantee, warranty or representation, either express or implied, is made with respect to such information. Terms of sale or lease and availability are subject to change or withdrawal without notice.