

Baker View Logistics Center

1215 80th Street SW, Everett, Washington



Developed by **SMARTCAP**

166,590 SF Distribution Center

Available Now

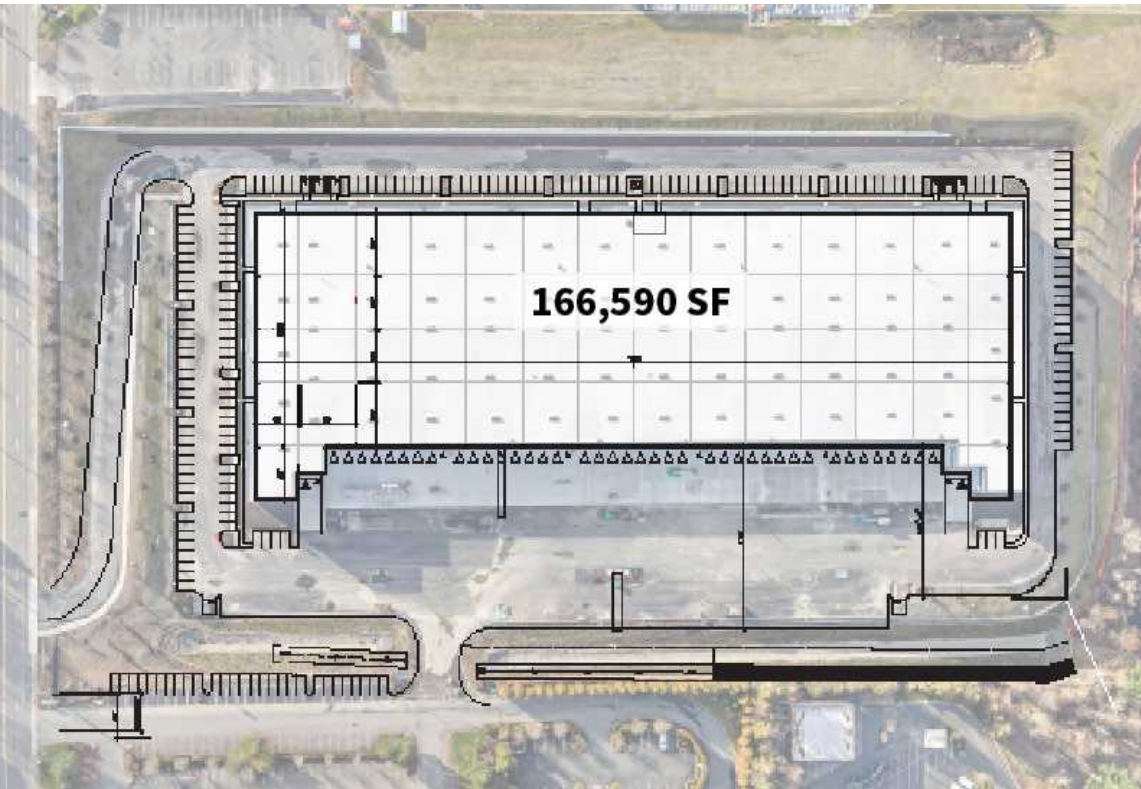


COMMERCIAL REAL ESTATE SERVICES
NORTHWEST LOGISTICS ADVISORS

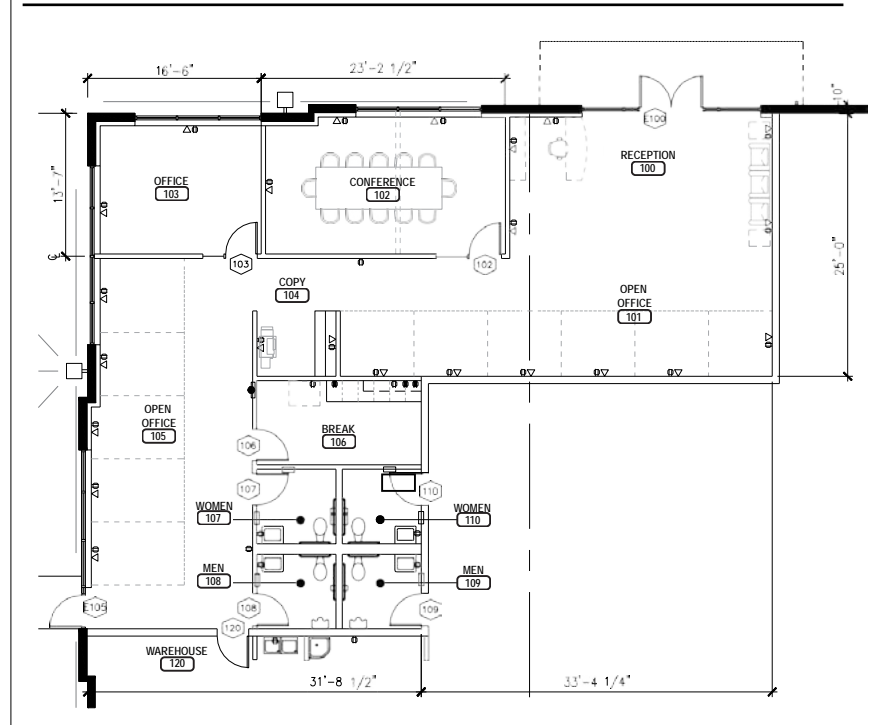
Chris Peterson
SIOR, CCIM, Principal
D 206.773.2678

Richard Peterson
Principal
D 206.773.2677

Ryan Aleinikoff
Associate
D 425.818.2654



SPEC OFFICE PLAN (recently completed)



- 3 **Class A Logistics Development**
- 3 **Available Now**
- 3 **Infrastructure in place to add EV charging stations and rooftop photovoltaic panels**
- 3 **Prime location in Everett's Seaway Industrial Center with proximity to ports, Paine Field, Interstate 5, and amenities.**

Building Size	166,590 RSF
Office Size	2,513 SF
Clear height	36'
Slab Design	6 ¾ reinforced with 4,500 psi compression
Loading	42 Dock-high doors. 2 grade level doors with 60' concrete apron
Column Spacing	54' x 50' standard, 60' speed bay
Power	2,000 Amps 408v 3 phase
Roof System	Steel decking with TPO
Fire Suppression	ESFR sprinkler system
Trailer Parking	Extra deep 170' loading court allows for trailer parking stalls
Auto parking	176 stalls

POSSESSION
SOUND



EVERGREENWAY



We obtained the information above from sources we believe to be reliable. However, we have not verified its accuracy and make no guarantee, warranty or representation about it. It is submitted subject to the possibility of errors, omissions, change of price, rental or other conditions, prior sale, lease or financing, or withdrawal without notice. We include projections, opinions, assumptions or estimates for example only, and they may not represent current or future performance of the property. You and your tax and legal advisors should conduct your own investigation of the property and transaction.

CONTACT

Chris Peterson
Sior, CCIM, Principal
D 206.773.2678

Richard Peterson
Principal
D 206.773.2677

Ryan Aleinikoff
Associate
D 425.818.2654

 **LEE & ASSOCIATES**
COMMERCIAL REAL ESTATE SERVICES

DEVELOPED BY:

 **SMARTCAP**