

11001-11035

118TH PLACE NE






KIRKLAND, WA

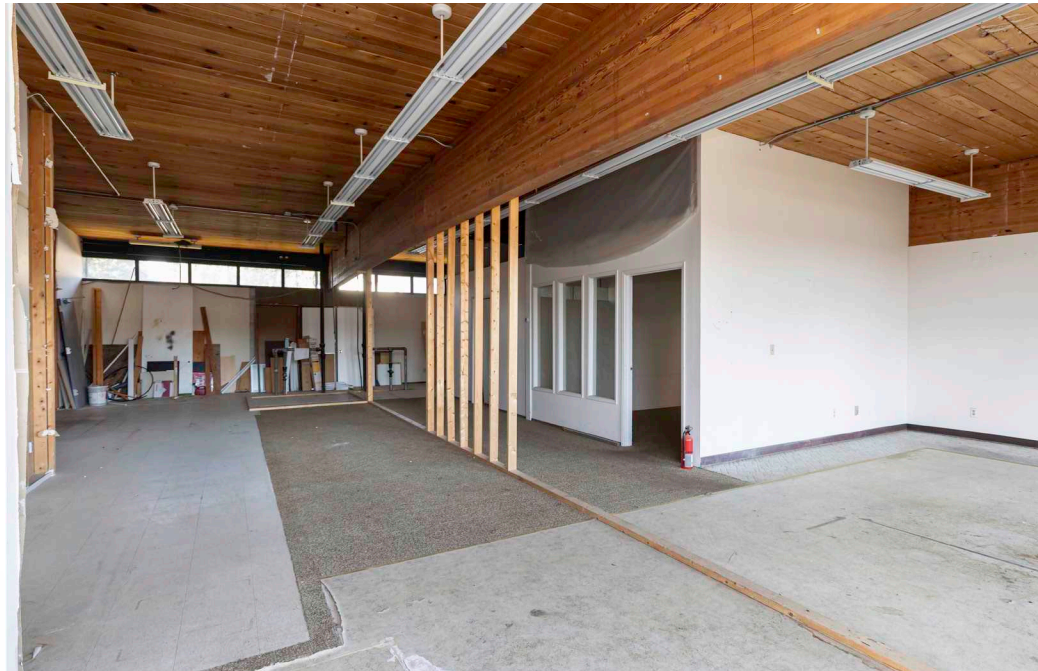
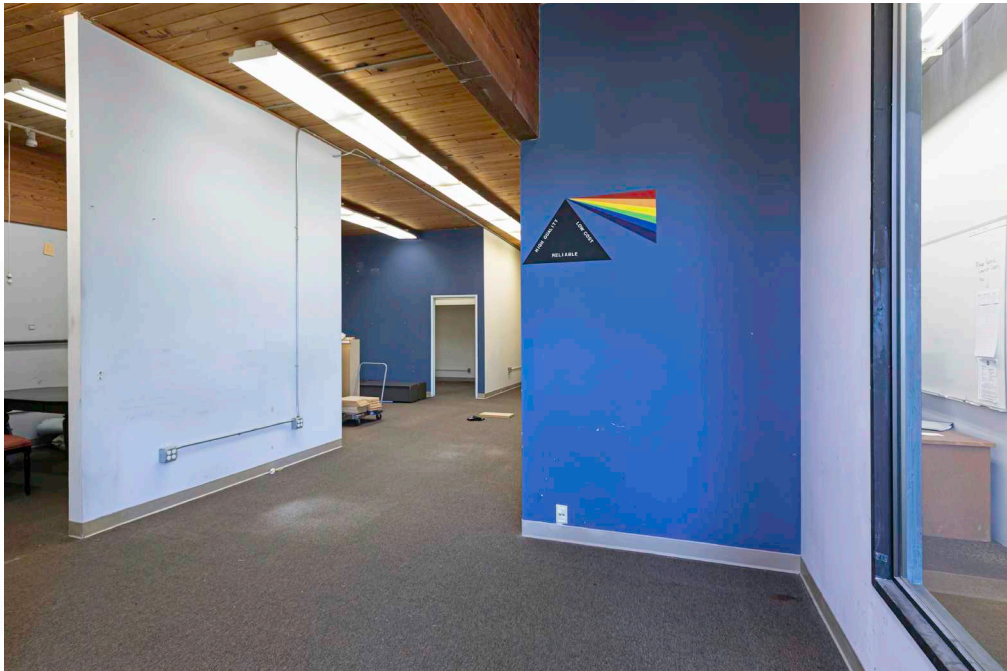
FOR LEASE

NEWMARK

CAM WARREN
Managing Director
425.362.1395
cam.warren@nmrk.com

Building Information

-  \$14.00 NNN lease rate
-  Well located directly off of I-405
-  Office/Storage space with flexible shorter term options
-  Close proximity to cafes, restaurants, and the Village at Totem Lake
-  Convenient access to public transportation.



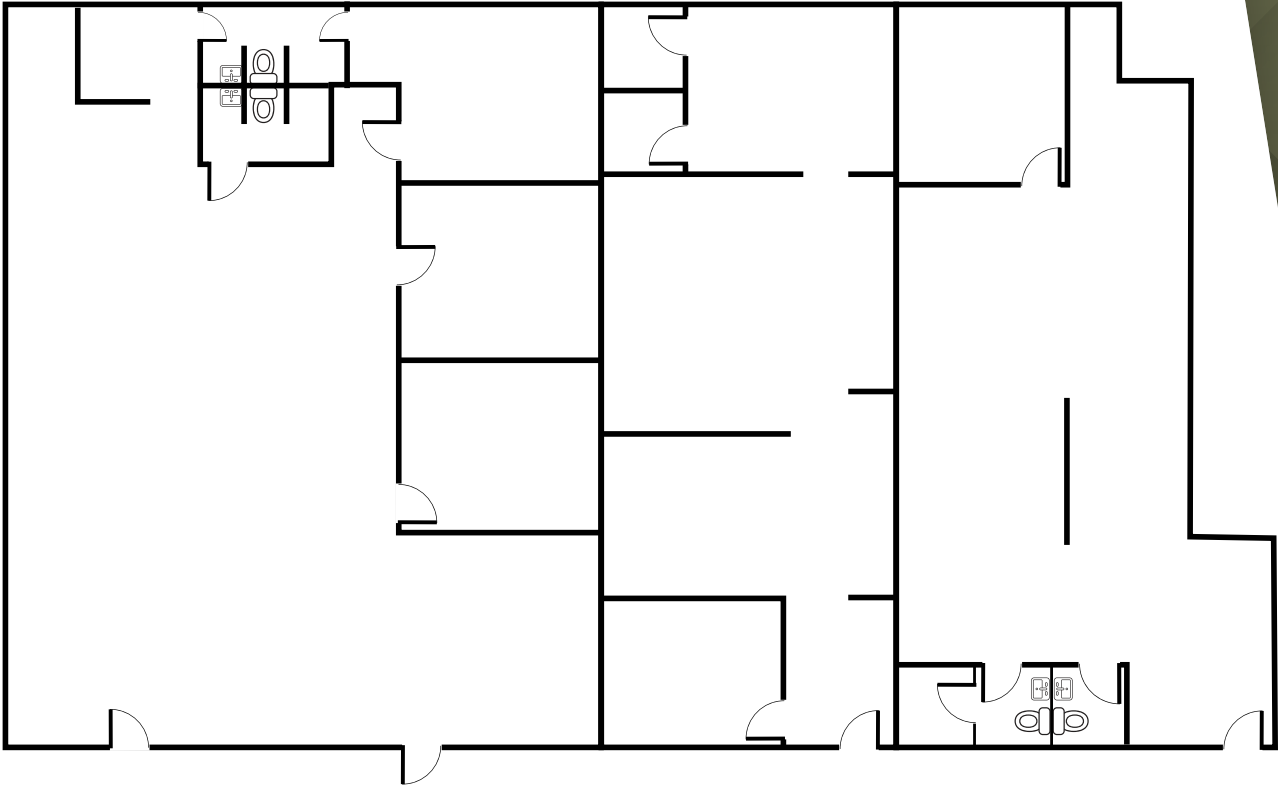
Suite 11023 | Second Floor

3,054 RSF

11001-11035

118TH PLACE NE

KIRKLAND, WA



Floor plan not drawn to scale



11001-11035

118TH PLACE NE

KIRKLAND, WA

CAM WARREN

Managing Director

425.362.1395

cam.warren@nmrk.com

The distributor of this communication is performing acts for which a real estate license is required. The information contained herein has been obtained from sources deemed reliable but has not been verified and no guarantee, warranty or representation, either express or implied, is made with respect to such information. Terms of sale or lease and availability are subject to change or withdrawal without notice. MP-120 • 02/24

NEWMARK