

ONE UNION SQUARE SUBLEASE

600 University Street | Suite 2900 | Seattle, WA 98101



\$20.00 PSF - Full Service



Suite 2900: 7,620 SF



Beautiful views of downtown Seattle



Multiple private offices, conference rooms, and kitchen



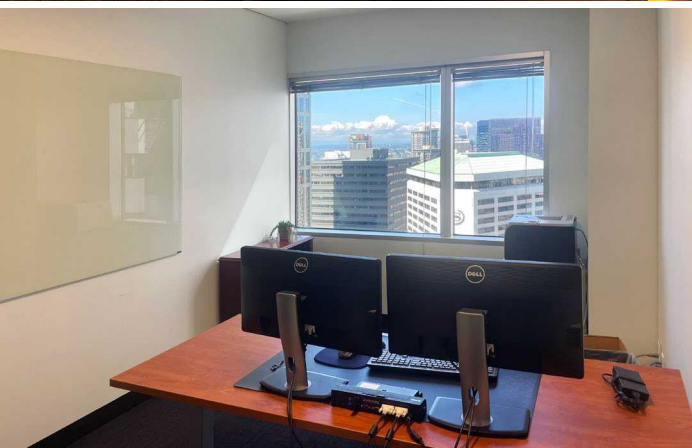
Outdoor courtyard connecting One and Two Union Square



Available now



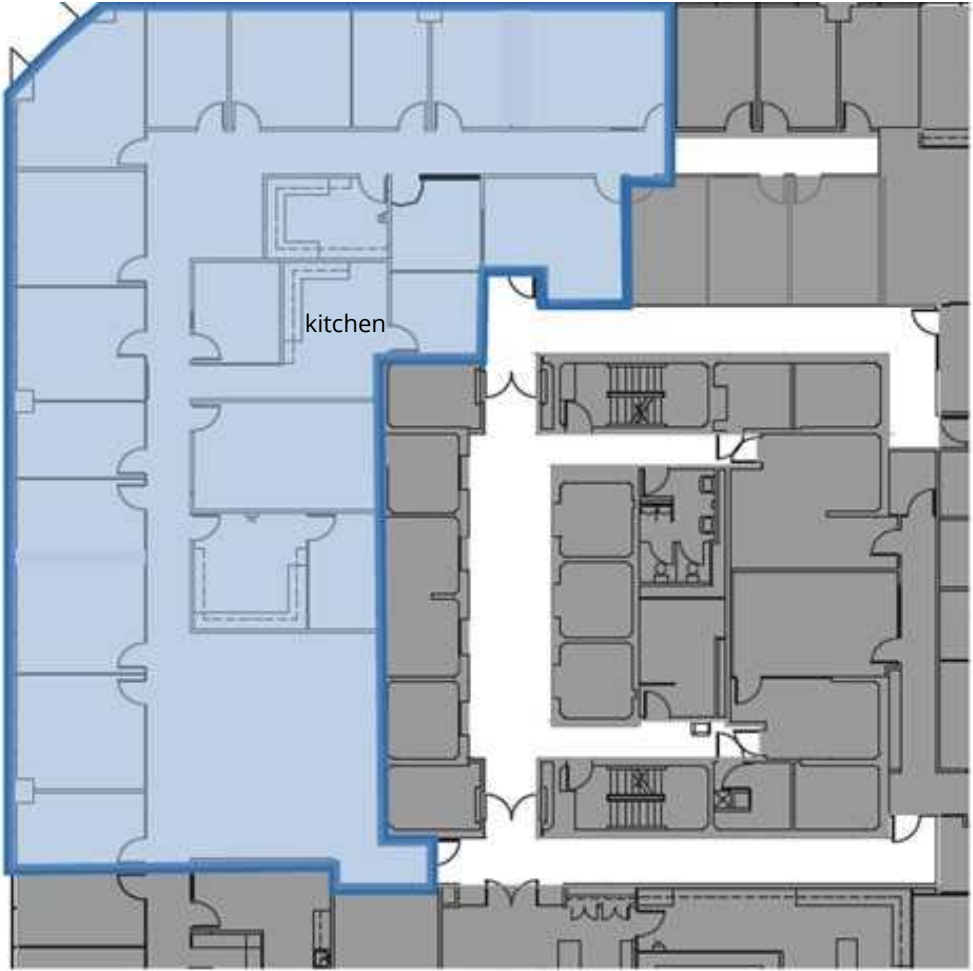
Lease expiration date: 10/31/2026



ONE UNION SQUARE SUBLEASE

600 University Street | Suite 2900 | Seattle, WA 98101

VIRTUAL TOUR



BE IN THE HEART OF DOWNTOWN SEATTLE

Place your company amongst a wide variety of amenities, including shopping, dining, museums, theaters, and other entertainment and cultural venues. Downtown Seattle's walkable layout and ample options for public transportation provide easy access to activity hubs, the waterfront, and surrounding neighborhoods.



JOE CONNER

Senior Associate
+1 425 698 7142
joe.conner@colliers.com

CONNOR MCCLAIN

Senior Vice President
+1 206 624 7417
connor.mcclain@colliers.com

JEFF CHANEY

Executive Vice President
+1 425 468 0703
jeff.chaney@colliers.com

SEAMUS OBER

Senior Associate
+1 425 468 0702
seamus.ober@colliers.com

