

FOR LEASE

1818 South Union Avenue
Tacoma, WA 98405



ONE CLICK MAP



1818 UNION OFFICE / MEDICAL

Blake Weber | Jameson Sullivan

First Western Properties—Tacoma Inc. | 253.472.0404
6402 Tacoma Mall Blvd, Tacoma, WA 98409 | fwp-inc.com

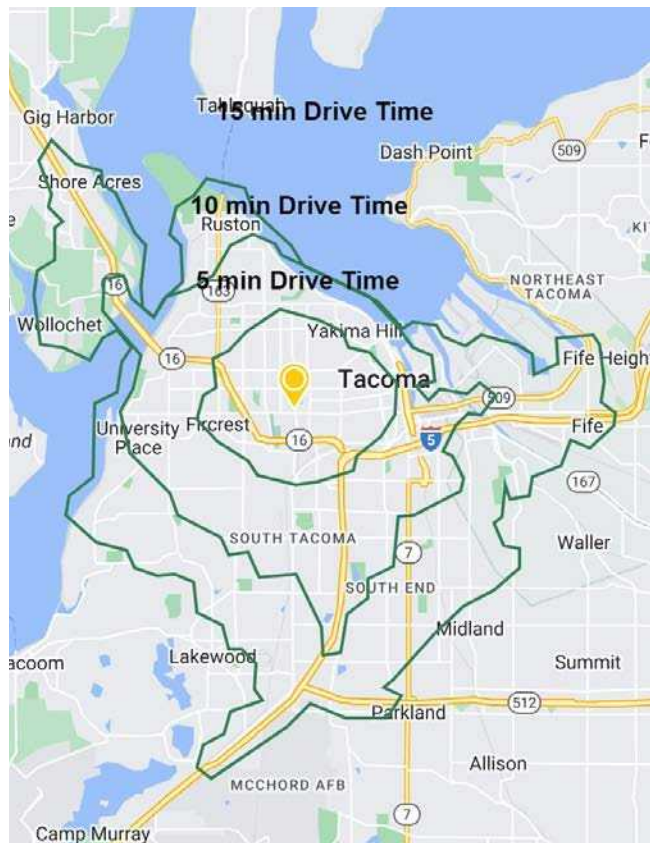
AVAILABLE

SUITE 1A 3,750 SF \$30.00 PSF (MODIFIED GROSS)
 SUITE 1B 1,589 SF \$30.00 PSF (MODIFIED GROSS)
 *CAN BE COMBINED 5,339 SF

- Highly visible on busy Union Ave
- Located at signalized intersection
- Ample parking
- Beautiful entrance/lobby
- Facade signage available
- Located across from Allenmore Hospital and new MultiCare development
- Suite 1B Available Dec 2024

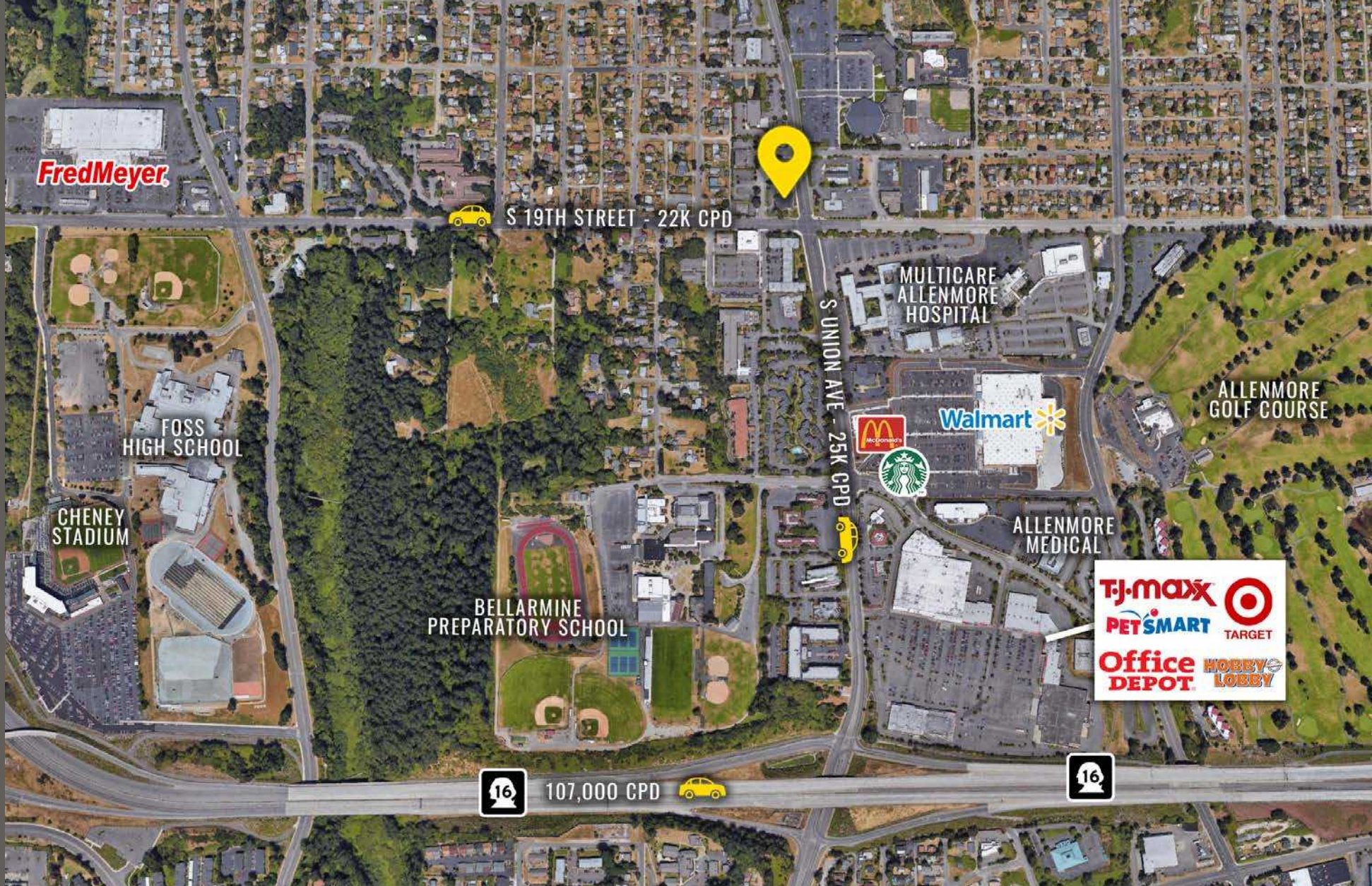


NEARBY TENANTS



Regis - 2024	Population	Average HH Income	Daytime Population
5 Minutes	36,735	\$120,609	27,464
10 Minutes	156,680	\$117,930	121,012
15 Minutes	270,643	\$118,220	193,771

LOCATION DETAILS



Located moments from HWY 16



25,000 CPD S Union Avenue

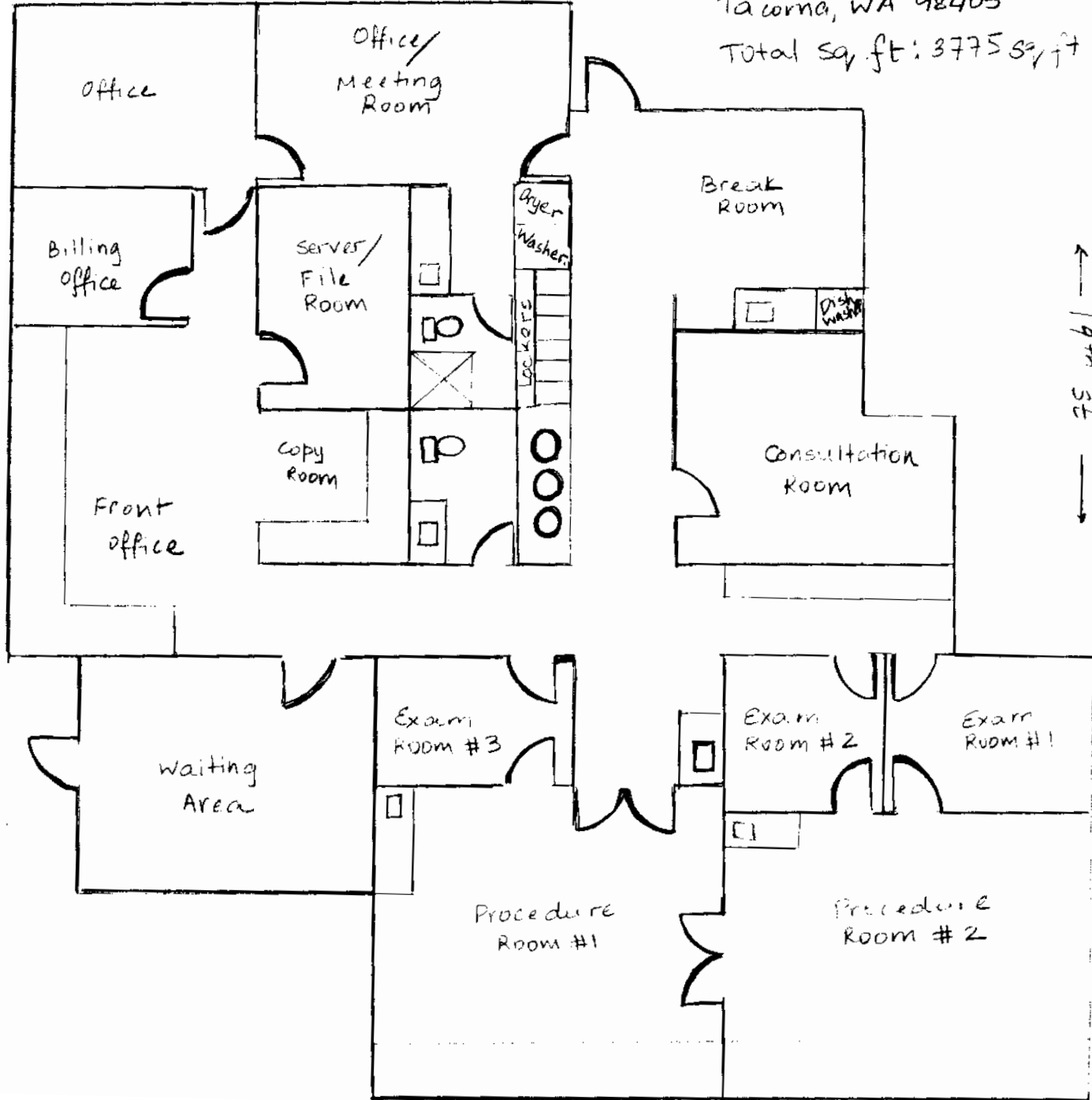


22,000 CPD S 19th Street

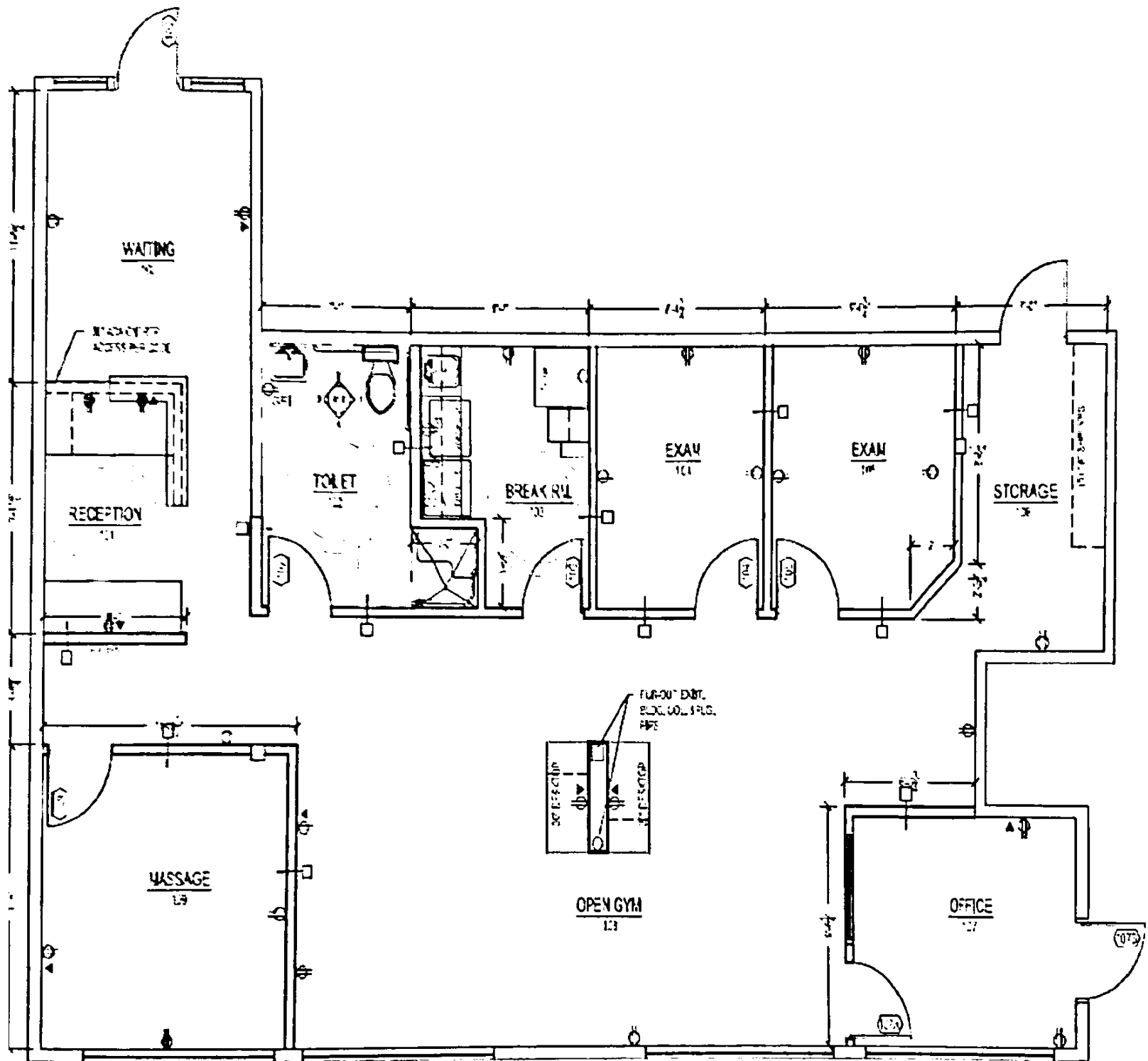
SUITE 1A FLOOR PLAN

← Union Ave →

1818 S Union
Suite 1A
Tacoma, WA 98405
Total Sq. ft: 3775 Sq. ft



SUITE 1B FLOOR PLAN



CITY SUMMARY



TACOMA, WA is rooted in the arts and has a vibrant urban core that is alive with culture. Situated along the Puget Sound, Tacoma is a mid-sized urban port city of Pierce County just over 30 miles south of Seattle. The museum district is home for its world-renowned Museum of Glass, while the waterfront, parks, gardens and wildlife make Tacoma a nature wonderland ready for all to explore.

TACOMA | KIRKLAND | PORTLAND | SEATTLE



RELATIONSHIP FOCUSED. RESULTS DRIVEN.

BLAKE WEBER

206.898.1231
bweber@firstwesternproperties.com

JAMESON SULLIVAN

253.471.5508
jsullivan@firstwesternproperties.com



First Western Properties—Tacoma Inc. | 253.472.0404
6402 Tacoma Mall Blvd, Tacoma, WA 98409 | fwp-inc.com

© First Western Properties, Inc. DISCLAIMER: The above information has been secured from sources believed to be reliable, however, no representations are made to its accuracy. Prospective tenants or buyers should consult their professional advisors and conduct their own independent investigation. Properties are subject to change in price and/or availability without notice.