

ELLIS COURT

2510 WESTERN AVENUE
SEATTLE, WA 98121

±2,826 SF Penthouse Office Space



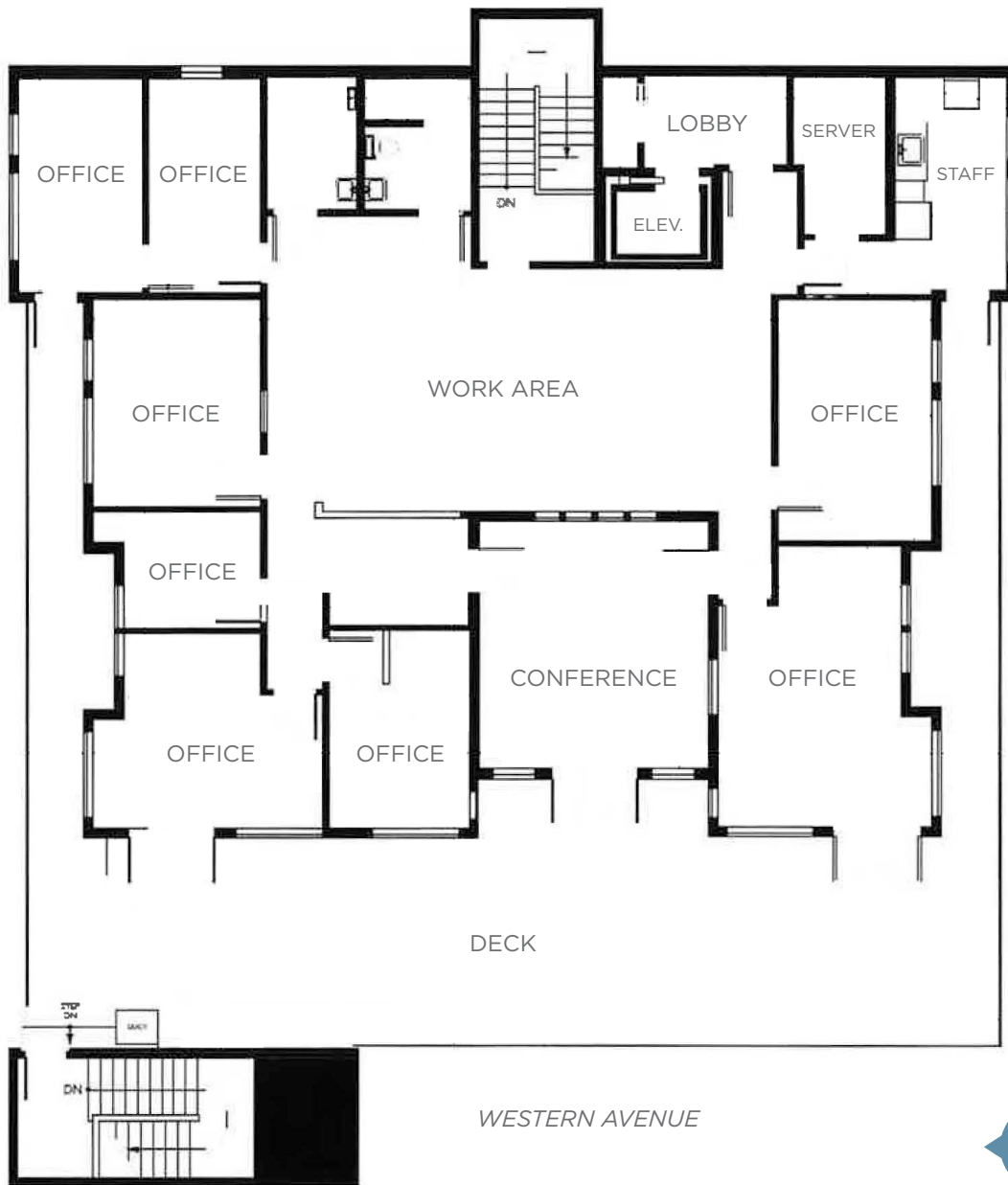


PROPERTY HIGHLIGHTS/

- 2,826 SF penthouse office space
- Large West-facing deck
- 2 garage parking stalls
- Secure entrance
- 8 private office
- Open workspace area with skylights
- Large conference room
- Kitchenette
- Water views
- **Contact broker for pricing details**

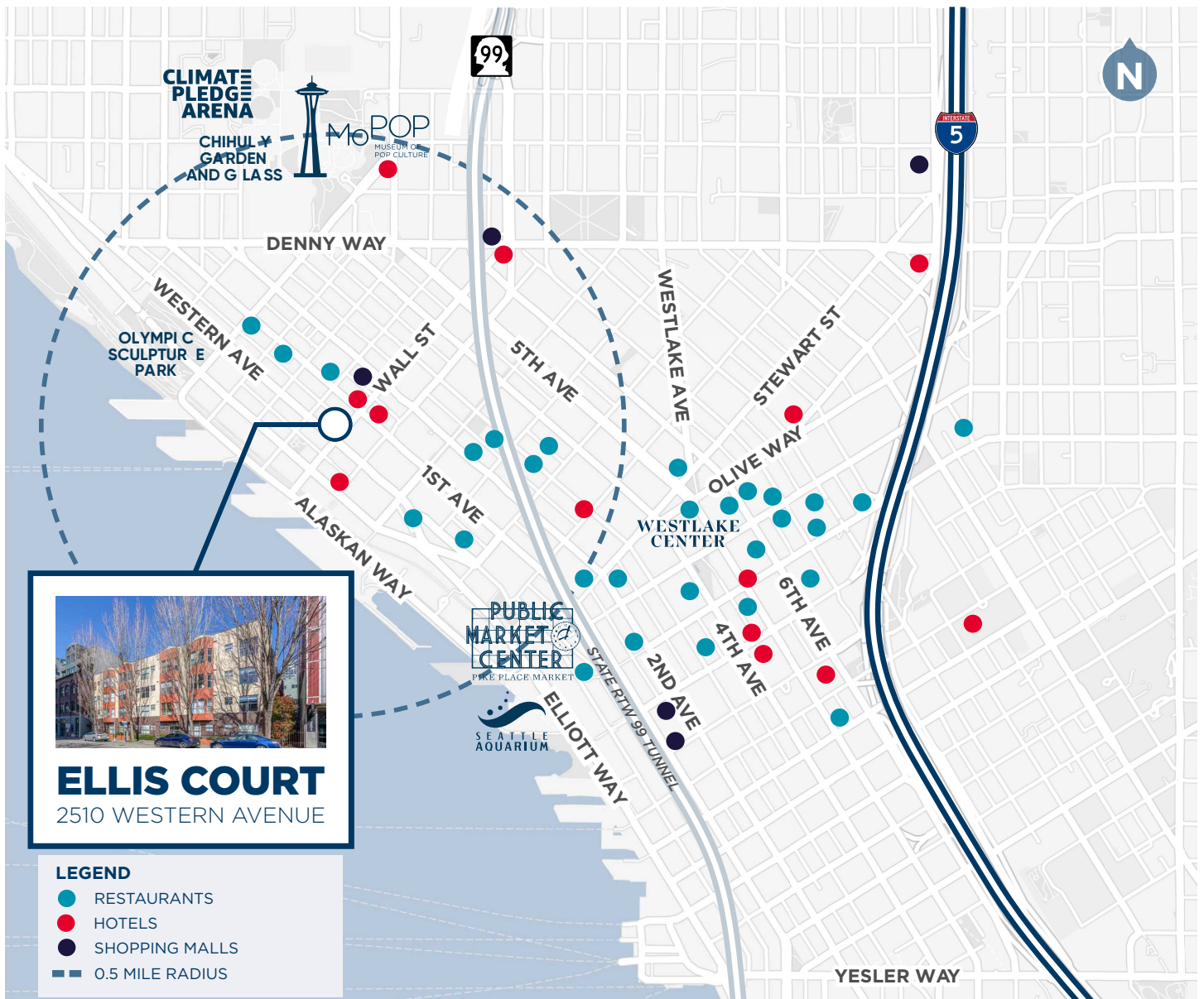
FLOOR PLAN

PENTHOUSE OFFICE - ±2,826 SF



PROPERTY IMAGES/





WALK SCORE | **95** | **WALKER'S PARADISE**

TRANSIT SCORE | **95** | **RIDER'S PARADISE**

BIKE SCORE | **71** | **VERY BIKEABLE**

CONTACT

LEAH MASSON
 Senior Director
 +1 206 215 9803
 leah.masson@cushwake.com

ELLEN AKOPYAN
 Associate
 +1 206 800 1788
 ellen.akopyan@cushwake.com



601 Union Street | Seattle, WA 98101 | cushmanwakefield.com

©2024 Cushman & Wakefield. All rights reserved. The information contained in this communication is strictly confidential. This information has been obtained from sources believed to be reliable but has not been verified. No warranty or representation, express or implied, is made as to the condition of the property (or properties) referenced herein or as to the accuracy or completeness of the information contained herein, and same is submitted subject to errors, omissions, change of price, rental or other conditions, withdrawal without notice, and to any special listing conditions imposed by the property owner(s). Any projections, opinions or estimates are subject to uncertainty and do not signify current or future property performance.