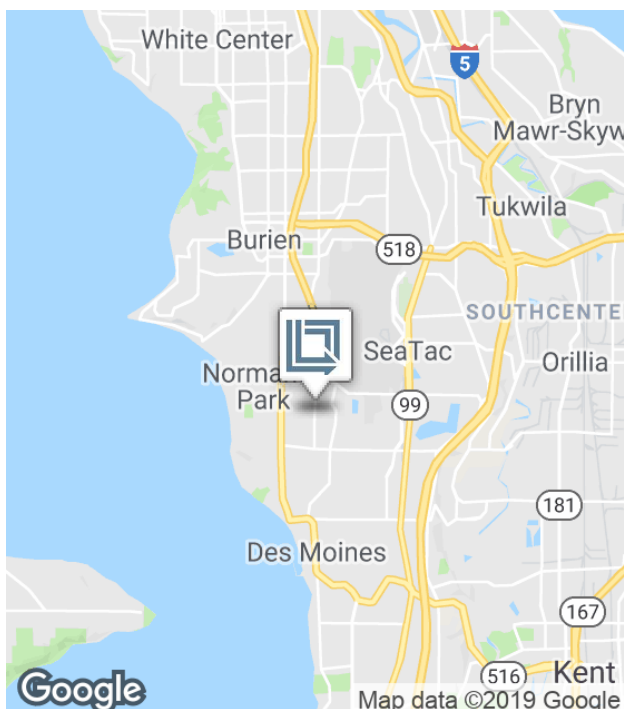


# 3,416 SF

Office Space For Lease

LBA Logistics 



## SeaTac Logistics Park 2, Bldg D

18800 8th Ave S, Suite 2500, SeaTac, WA 98148 USA

- 3,416 square feet (office)
- Located within 5 minutes of cargo entrance to SeaTac International Airport
- Spacious locations overlooking Mt. Rainier & airport runways
- Access and use of the amenities space
- Available March 1, 2025

For more information:

**Arie Salomon, SIOR, CCIM**

+1 425 586 5636 • [asalomon@nai-psp.com](mailto:asalomon@nai-psp.com)

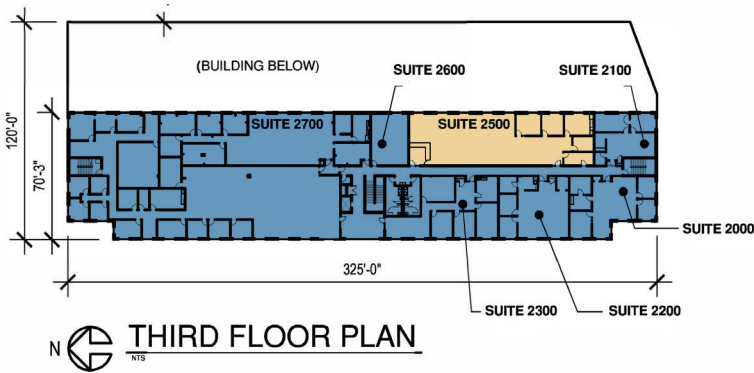
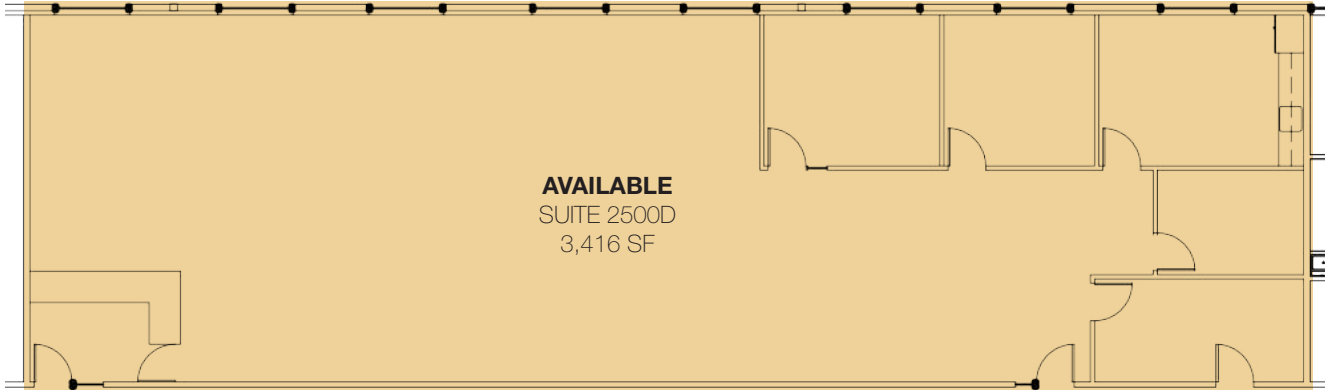
**Connor Powell, SIOR, CCIM**

+1 425 586 5642 • [cpowell@nai-psp.com](mailto:cpowell@nai-psp.com)

# 3,416 SF

Office Space For Lease

LBA Logistics 



# SeaTac Logistics Amenities

Buildings D, E, and F



Pool & Ping Pong



Gym & Wellness Room



Kitchen with large fridge, eating area, and island



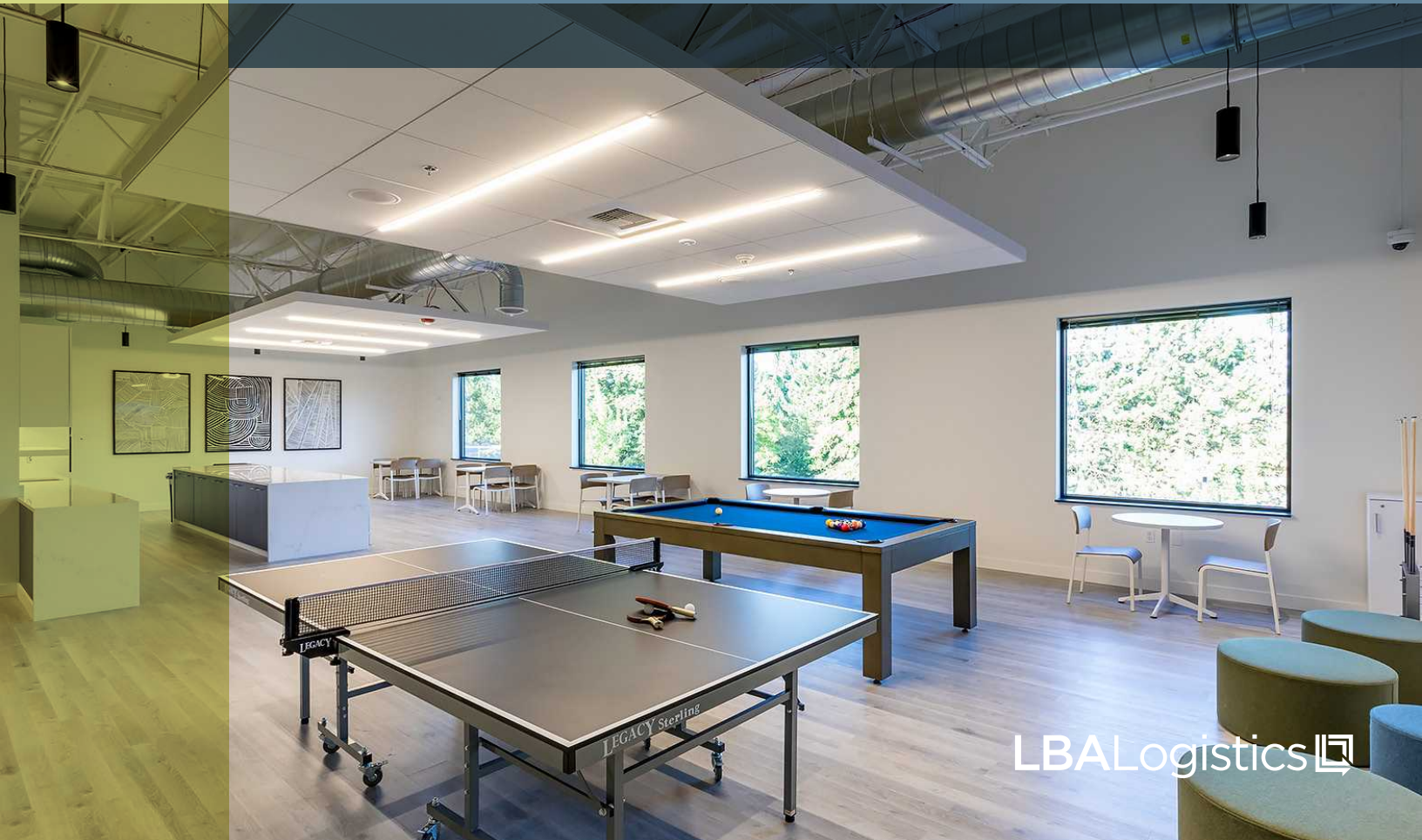
Multi-purpose room  
(Yoga room / workout classes etc.)



Lockers & Showers



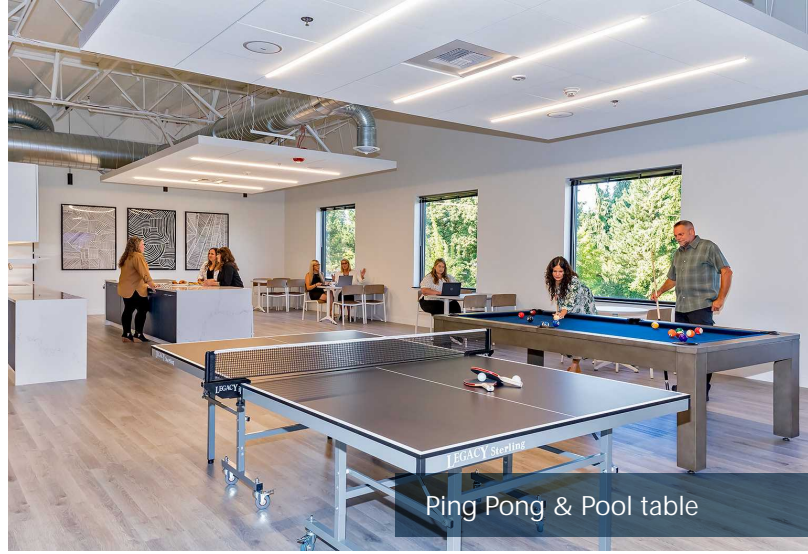
Desk area with plug-ins





# SeaTac Logistics Amenities

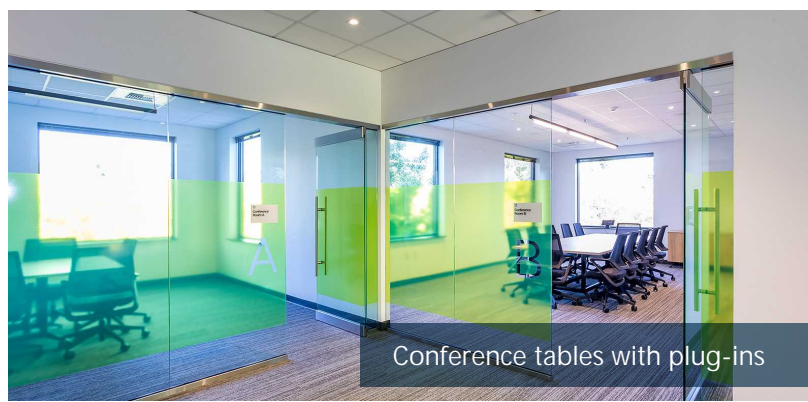
Buildings D, E, and F



Ping Pong & Pool table



Kitchen



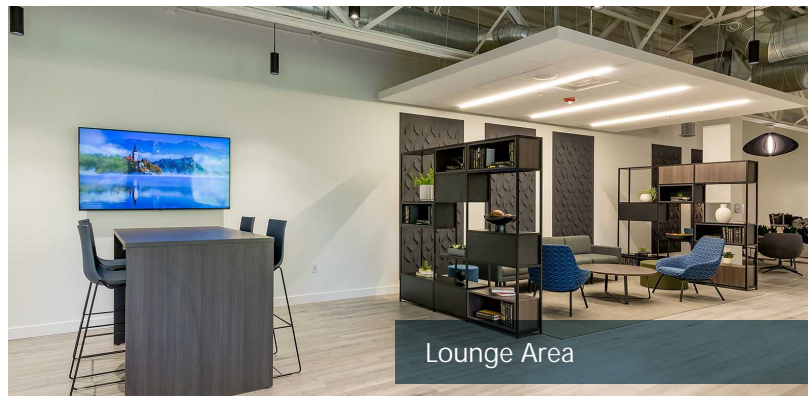
Conference tables with plug-ins



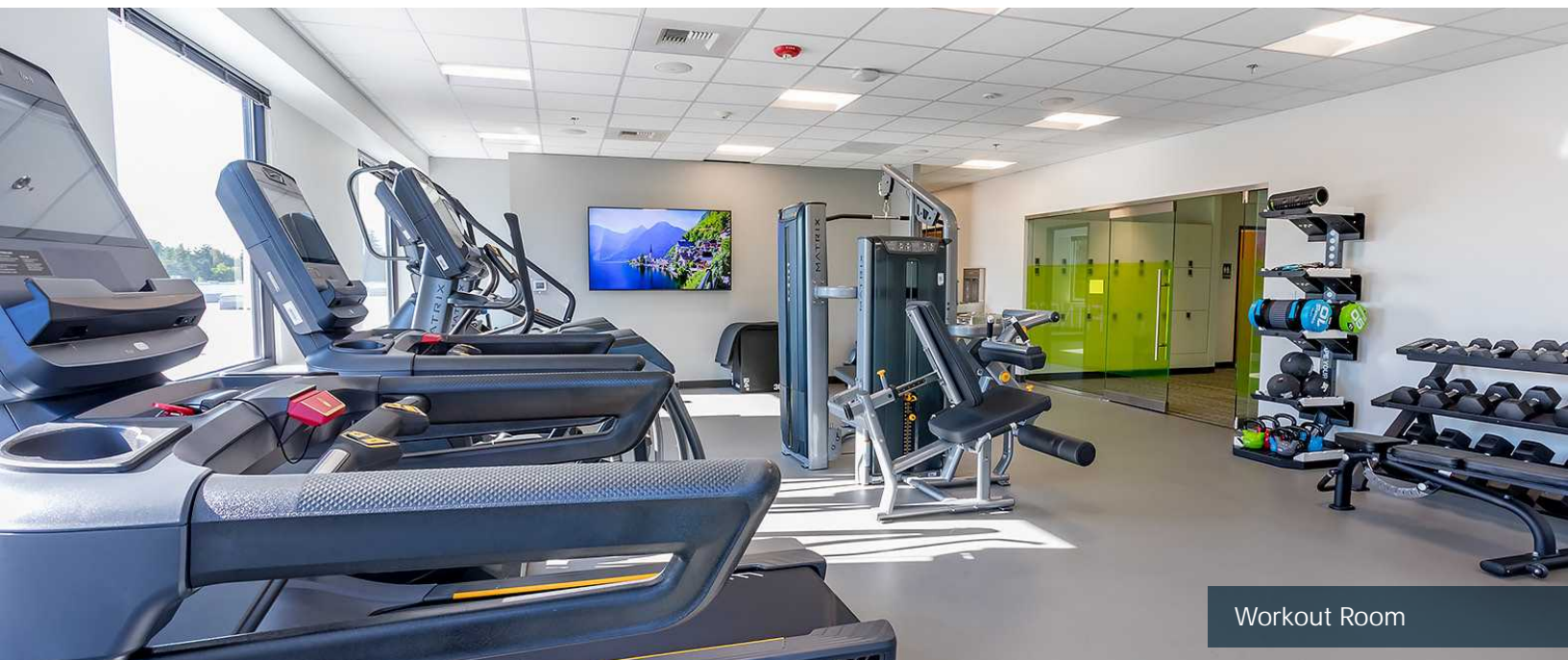
Pods



Lockers



Lounge Area



Workout Room