

FAIRVIEW PARK

3147 FAIRVIEW AVENUE E
SEATTLE, WA 98102

AVAILABILITIES:

FLOOR 2 | 1,000 RSF

FLOOR 3 | 1,751 RSF

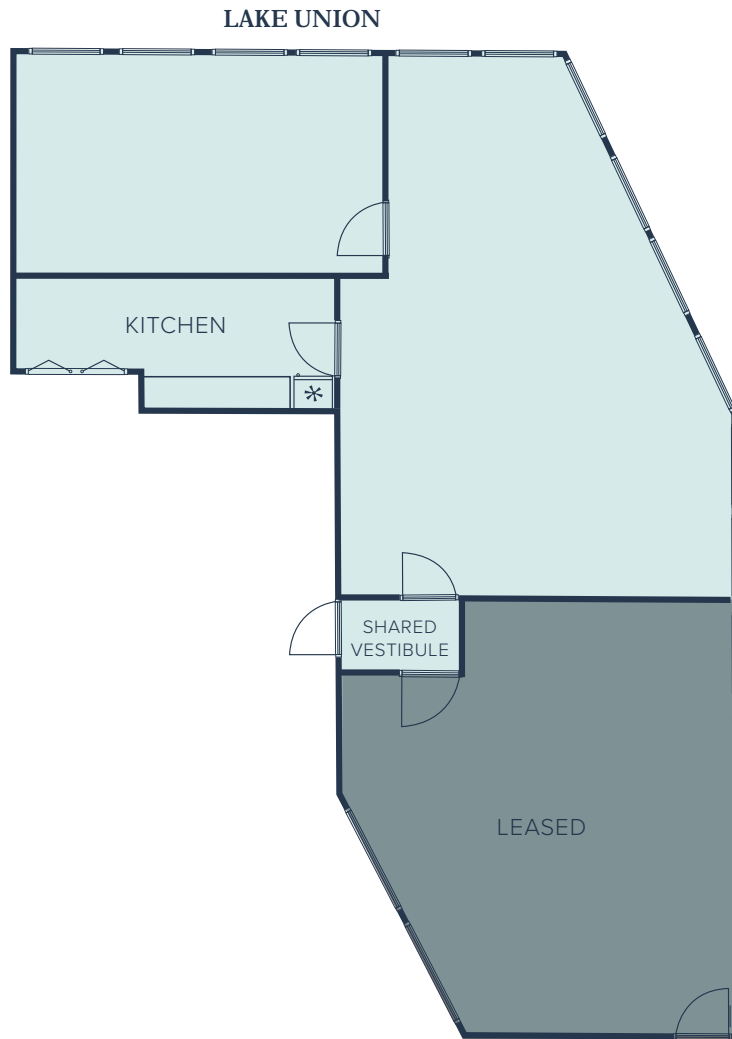
NEWMARK



FLOOR 2 - 1,000 RSF


— Available Now

— Private & bright open office space with waterfront views of Lake Union

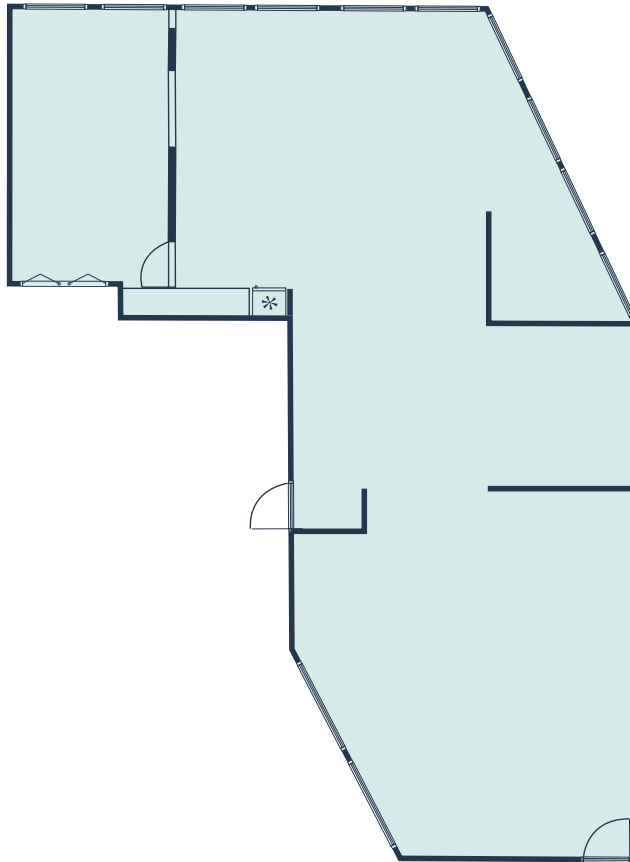


FLOOR 3 - 1,751 RSF

- Available Now
- Full floor
- Furnished office space
- Private & bright open office space with waterfront views of Lake Union
- Includes three (3) parking spots

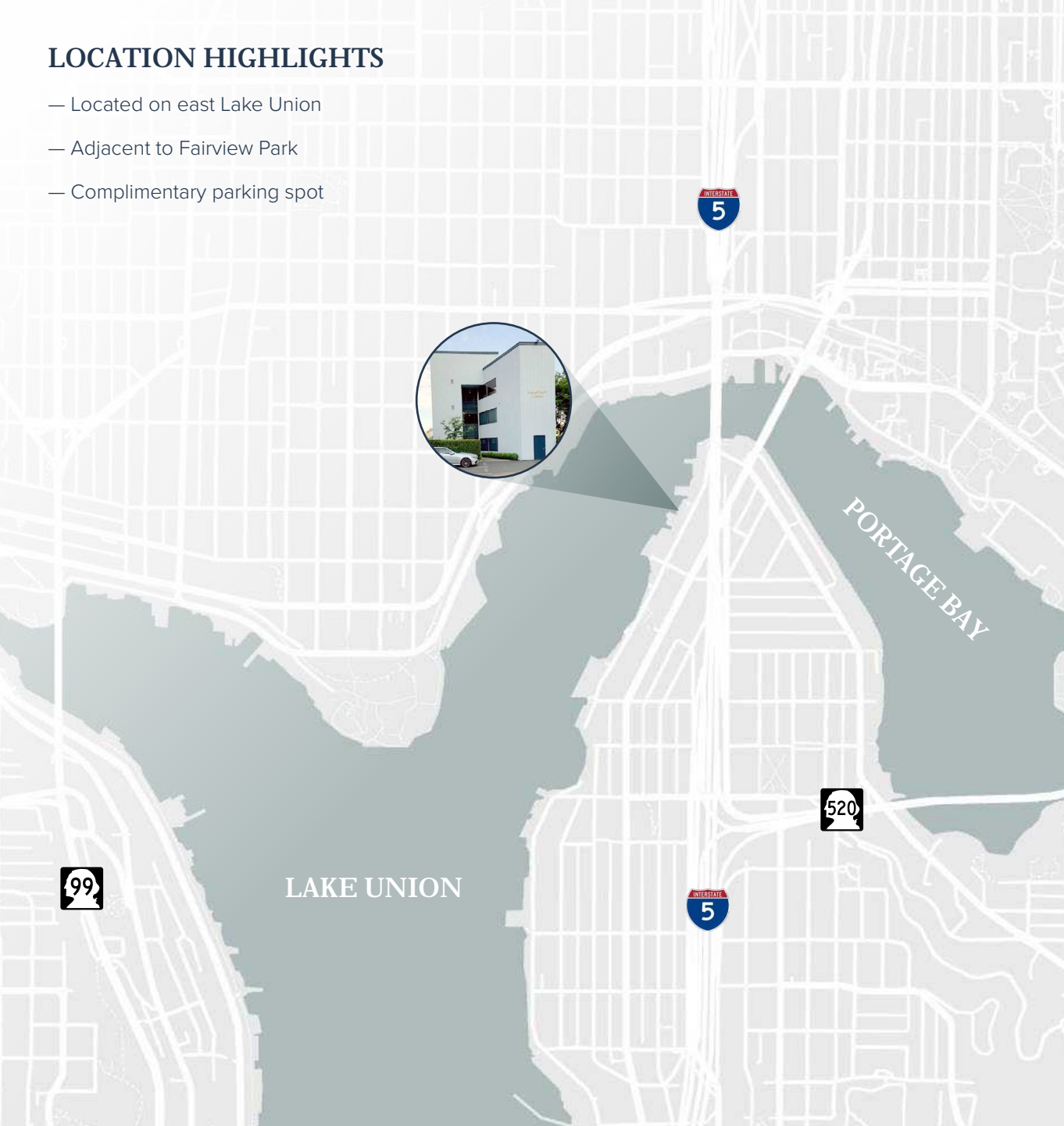
VIEW VIRTUAL TOUR 

LAKE UNION



LOCATION HIGHLIGHTS

- Located on east Lake Union
- Adjacent to Fairview Park
- Complimentary parking spot



BUILDING HIGHLIGHTS

- Utilities & janitorial services included
- Private western waterfront deck on east Lake Union, with beach and water access right next door.
- 24-hour security
- Parking and bike storage
- Located in an amenity-rich area within walking distance to the University Washington and Downtown Seattle



TRACY TURNURE
425-372-9923
tracy.turnure@nrmk.com

FAIRVIEW
— PARK —

NEWMARK

The distributor of this communication is performing acts for which a real estate license is required. The information contained herein has been obtained from sources deemed reliable but has not been verified and no guarantee, warranty or representation, either express or implied, is made with respect to such information. Terms of sale or lease and availability are subject to change or withdrawal without notice.