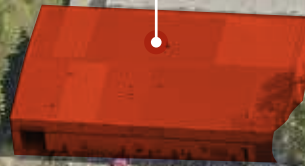


SUBJECT
PROPERTY



WOOD-VIEW INDUSTRIAL PARK

BLDGA

TODD GAUTHIER
425.450.1118
todd.gauthier@kidder.com

JASON BLOOM
425.450.1102
jason.bloom@kidder.com

HIGHLY- ACCESSIBLE LOCATION

Renovated concrete tilt construction (2013)

Clear height of 20'

Oversized grade-level door and one dock-high door

Great access to SR-522, Hwy-9, and I-405

3-phase power, 800 amps

Abundant additional storage below offices

Great parking with additional outdoor yard area that can be fenced

5 MIN
DRIVE TO I-405

3 MIN
DRIVE TO SR-522



BLDG A - FLOOR PLAN



12,360 SF

TOTAL AVAILABLE

\$1.75/SF

LEASE RATE (BLENDED, NNN)

\$0.33/SF

NNN RATE

NOW

AVAILABLE

Warehouse	7,500 SF
Main level office	2,280 SF
2nd level office area	1,380 SF
Total office space	3,660 SF
Total storage space	1,200 SF

WOOD-VIEW INDUSTRIAL PARK



TODD GAUTHIER
425.450.1118
todd.gauthier@kidder.com

JASON BLOOM
425.450.1102
jason.bloom@kidder.com

KIDDER.COM

This information supplied herein is from sources we deem reliable. It is provided without any representation, warranty, or guarantee, expressed or implied as to its accuracy. Prospective Buyer or Tenant should conduct an independent investigation and verification of all matters deemed to be material, including, but not limited to, statements of income and expenses. Consult your attorney, accountant, or other professional advisor. All Kidder Mathews designs are the sole property of Kidder Mathews. Branded materials and layouts are not authorized for use by any other firm or person.

