

FOR LEASE

Owned and Operated by



South 200th St Industrial Building

2375 South 200th St, SeaTac, WA 98198



±2,325 SF



LEASING INFO
& CONTACT

Kent Channing

(425) 586-5628 / kchanning@nai-psp.com

Arie Salomon

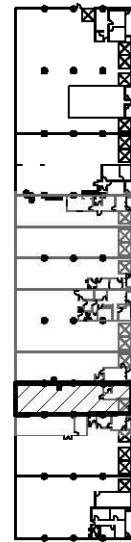
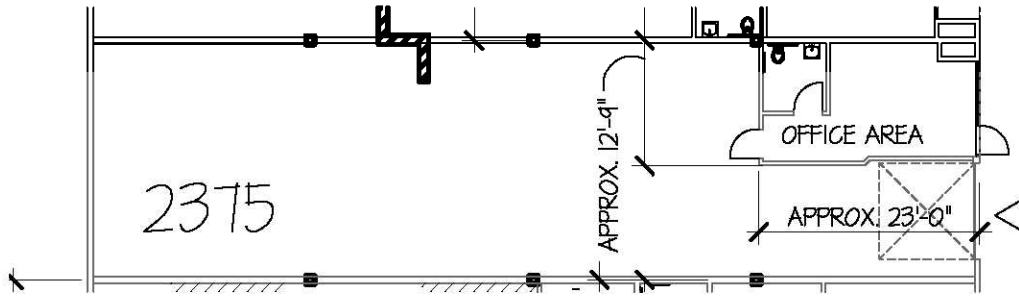
(425) 586-5636 / asalomon@nai-psp.com



This is not an offer or acceptance of an offer to lease space. A lease will only be offered or made in a written agreement signed by landlord. No representation or warranty of any kind is made by landlord unless set forth in a written definitive lease executed by the landlord.

OVERVIEW

2,325 SF with 295 SF of office space
 1 grade level door
 16' Clear Height
 Excellent access to I-5 & SR-509
 Lease Rate: \$1.15 Shell, \$1.25 office add on
 NNN's: \$0.38
 Available now



Key Plan
 UPPER LEVEL

- ▶ DOCK HIGH DOOR
- ▷ GRADE LEVEL DOOR

2375 South 200th Street, Seatac, Washington
 SCALE : 1" = 20'-0" TOTAL AREA: 2,325 S.F. OFFICE AREA: 295 S.F.