

PARK 140

±3,500 – 15,379 SF available for lease in Bellevue near Overlake

2405 - 2515 140TH AVE NE | BELLEVUE, WA

Contact

TODD GAUTHIER
425.450.1118
todd.gauthier@kidder.com

JASON BLOOM
425.450.1102
jason.bloom@kidder.com

PARK140BELLEVUE.COM



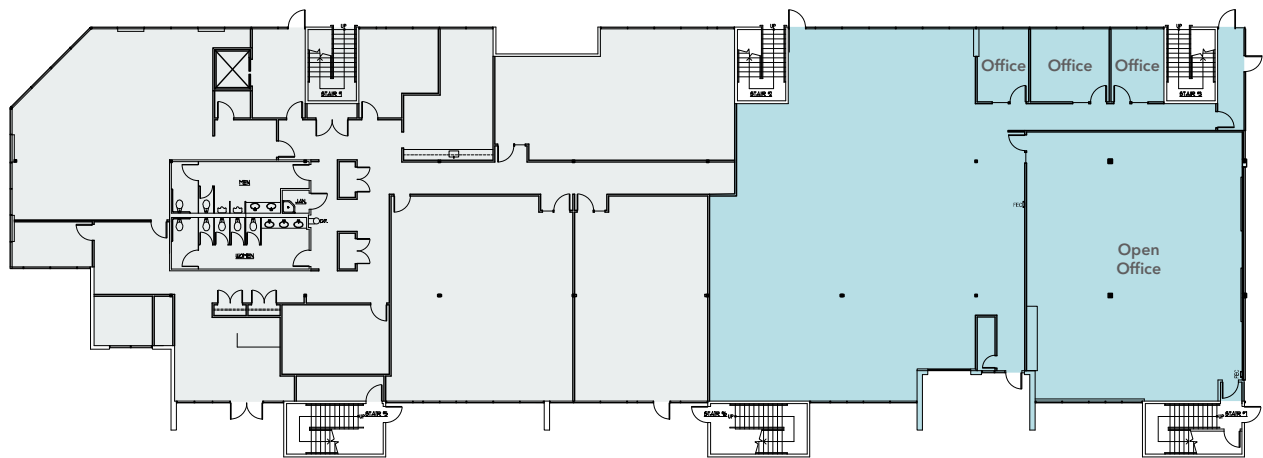
PARK 140

Suite B-110

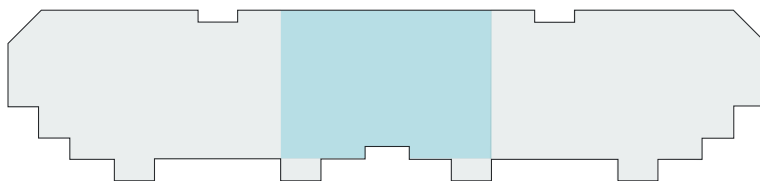
FIRST FLOOR

DROPPED CEILINGS and HVAC throughout

ROLL-UP DOOR possible



BUILDING B



 AVAILABLE

±3,500 SF
AVAILABLE

\$41.00
PSF, FULL SERVICE

NOW
AVAILABLE

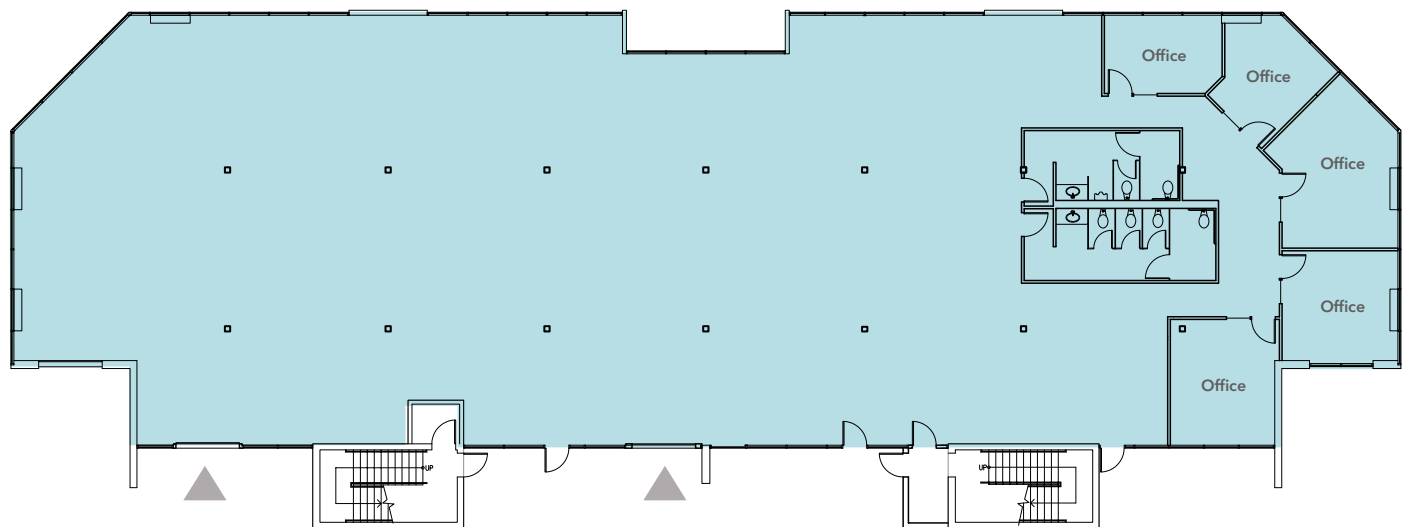
PARK 140

Suite D-100

FIRST FLOOR

DROPPED CEILINGS and HVAC throughout

2 ROLL-UP doors



9,199 SF
AVAILABLE

\$41.00
PSF, FULL SERVICE

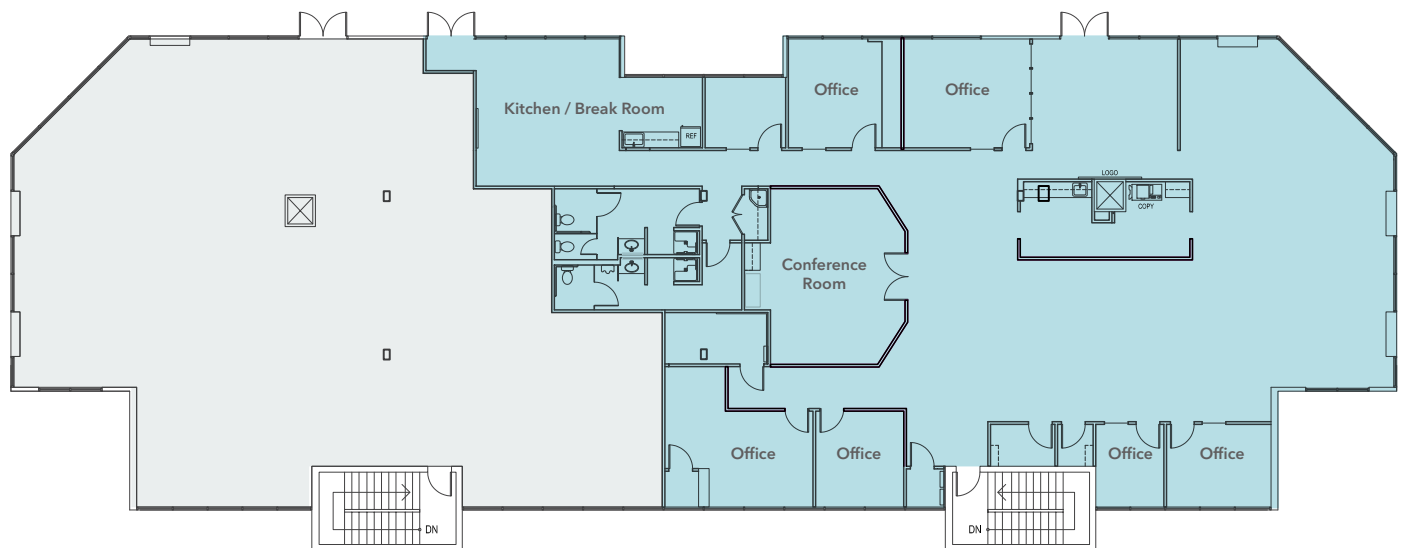
30 DAYS
AVAILABLE WITH NOTICE

PARK 140

Suite D-200

SECOND FLOOR

DROPPED CEILINGS and HVAC throughout



6,180 SF
AVAILABLE

\$41.00
PSF, FULL SERVICE

30 DAYS
AVAILABLE WITH NOTICE

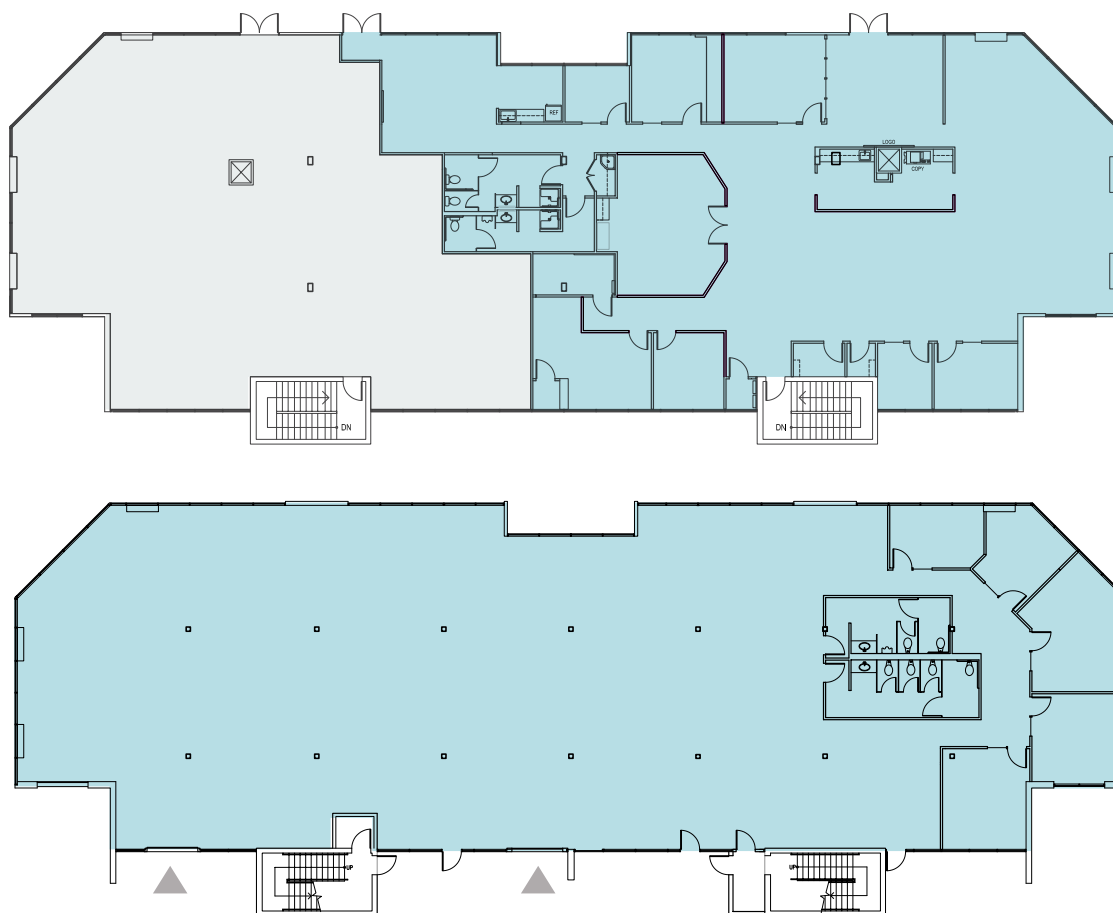
PARK 140

Suites D-100 + D-200

FIRST & SECOND FLOORS

DROPPED CEILINGS and HVAC throughout

2 ROLL-UP doors



 AVAILABLE

15,379 SF
AVAILABLE

\$41.00
PSF, FULL SERVICE

30 DAYS
AVAILABLE WITH NOTICE

Minutes from Overlake shopping and amenities, with access to East Link Light Rail.



EAST LINK LIGHT RAIL STATION

REDMOND

NE 40TH ST

OVERLAKE

PARK 140

520

INTERSTATE
405

BEL-RED RD

140TH AVENUE NE

NE 8TH ST

BELLEVUE CBD

OVERLAKE SHOPPING

SAFeway	TRADER JOE'S	Fred Meyer
T Mobile	BevMo!	Walgreens
Marshalls	ROSS DRESS FOR LESS	CHASE
HARBOR FREIGHT	PETSMART	McKENZIE'S

OVERLAKE FOOD & DRINK

Red Robin GOURMET BURGERS & MORE	Starbucks	Applebee's GRILL & BAR
POTBELLY HANDCUT BURGERS	MERCURY'S COFFEE	麵點館 DOUGH ZONE
85°C Dunkin' Donuts	IHOP	MOD
Arby's	SHABURINA	



PARK 140

2405 - 2515 140TH AVE NE, BELLEVUE, WA

TODD GAUTHIER

425.450.1118

todd.gauthier@kidder.com

JASON BLOOM

425.450.1102

jason.bloom@kidder.com

PARK140BELLEVUE.COM

This information supplied herein is from sources we deem reliable. It is provided without any representation, warranty, or guarantee, expressed or implied as to its accuracy. Prospective Buyer or Tenant should conduct an independent investigation and verification of all matters deemed to be material, including, but not limited to, statements of income and expenses. Consult your attorney, accountant, or other professional advisor.

