

# PARK 140

±3,500 – 15,379 SF available for lease in Bellevue near Overlake

2405 - 2515 140TH AVE NE | BELLEVUE, WA

## Contact

**TODD GAUTHIER**  
425.450.1118  
todd.gauthier@kidder.com

**JASON BLOOM**  
425.450.1102  
jason.bloom@kidder.com

[PARK140BELLEVUE.COM](http://PARK140BELLEVUE.COM)



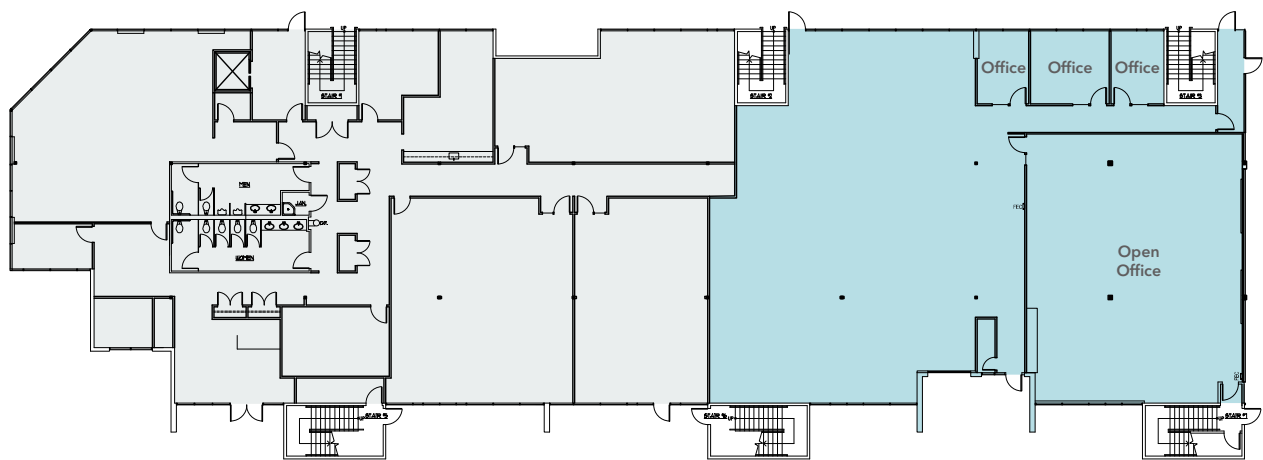
# PARK 140

## Suite B-110

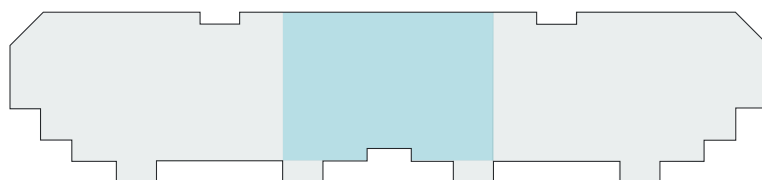
### FIRST FLOOR

DROPPED CEILINGS and HVAC throughout

ROLL-UP DOOR possible



### BUILDING B



AVAILABLE

**±3,500 SF**  
AVAILABLE

**\$41.00**  
PSF, FULL SERVICE

**NOW**  
AVAILABLE

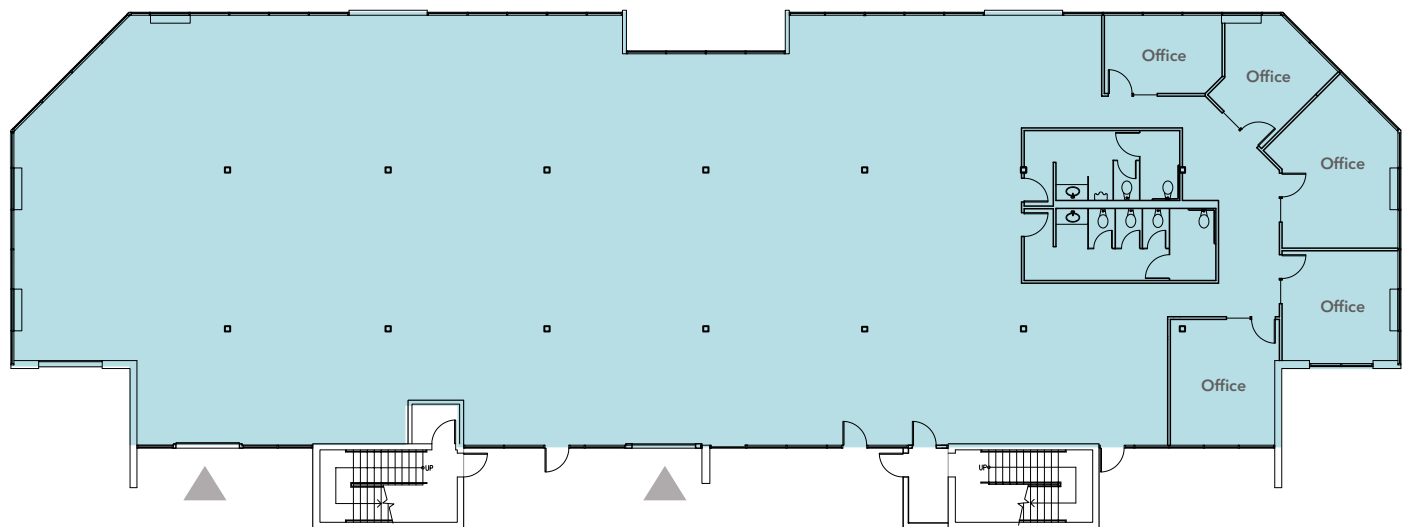
# PARK 140

## Suite D-100

### FIRST FLOOR

DROPPED CEILINGS and HVAC throughout

2 ROLL-UP doors



**9,199 SF**  
AVAILABLE

**\$41.00**  
PSF, FULL SERVICE

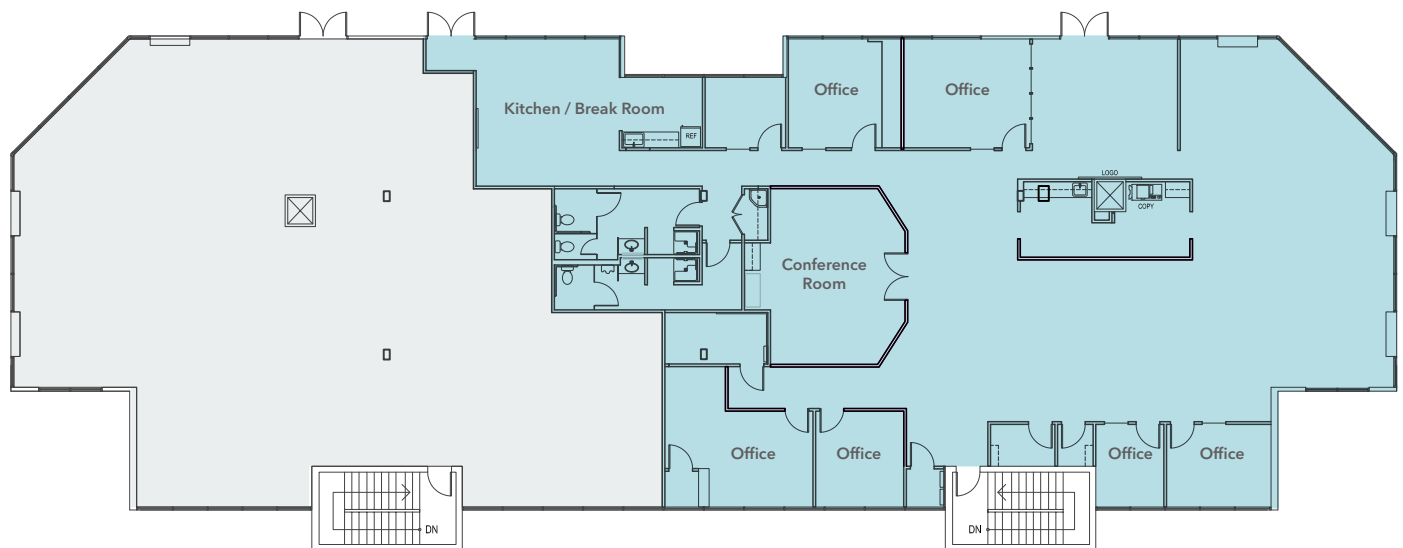
**30 DAYS**  
AVAILABLE WITH NOTICE

# PARK 140

## Suite D-200

### SECOND FLOOR

DROPPED CEILINGS and HVAC throughout



**6,180 SF**  
AVAILABLE

**\$41.00**  
PSF, FULL SERVICE

**30 DAYS**  
AVAILABLE WITH NOTICE



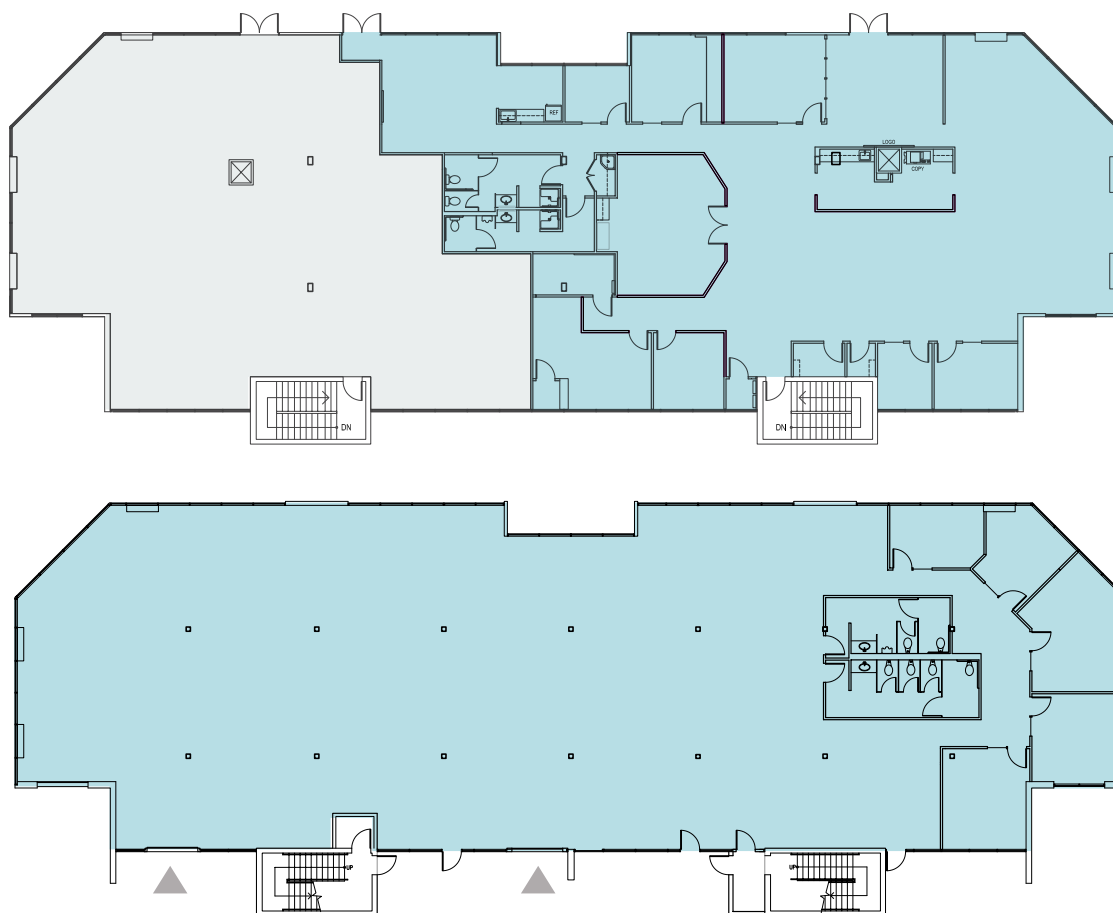
# PARK 140

## Suites D-100 + D-200

### FIRST & SECOND FLOORS

DROPPED CEILINGS and HVAC throughout

2 ROLL-UP doors



**15,379 SF**  
AVAILABLE

**\$41.00**  
PSF, FULL SERVICE

**30 DAYS**  
AVAILABLE WITH NOTICE



Minutes from Overlake shopping and amenities, with access to East Link Light Rail.



EAST LINK LIGHT RAIL STATION

REDMOND

NE 40TH ST

OVERLAKE

PARK 140

520

INTERSTATE 405

BEL-RED RD

140TH AVENUE NE

NE 8TH ST

BELLEVUE CBD

OVERLAKE SHOPPING

|                |                     |            |
|----------------|---------------------|------------|
| SAFeway        | TRADER JOE'S        | Fred Meyer |
| T Mobile       | BevMo!              | Walgreens  |
| Marshalls      | ROSS DRESS FOR LESS | CHASE      |
| HARBOR FREIGHT | PETSMART            | McMurry's  |

OVERLAKE FOOD & DRINK

|                           |                  |                |
|---------------------------|------------------|----------------|
| Red Robin                 | Starbucks        | Applebee's     |
| POTBELLY SANDWICH BURGERS | MERCURY'S COFFEE | 麵點館 DOUGH ZONE |
| 85°C Drip Coffee          | IHOP             | MOD            |
| Arby's                    | SHABURINA        |                |





# PARK 140

2405 - 2515 140TH AVE NE, BELLEVUE, WA

**TODD GAUTHIER**

425.450.1118

[todd.gauthier@kidder.com](mailto:todd.gauthier@kidder.com)

**JASON BLOOM**

425.450.1102

[jason.bloom@kidder.com](mailto:jason.bloom@kidder.com)

[PARK140BELLEVUE.COM](http://PARK140BELLEVUE.COM)

This information supplied herein is from sources we deem reliable. It is provided without any representation, warranty, or guarantee, expressed or implied as to its accuracy. Prospective Buyer or Tenant should conduct an independent investigation and verification of all matters deemed to be material, including, but not limited to, statements of income and expenses. Consult your attorney, accountant, or other professional advisor.

