

# FOR LEASE

## TAP ROOM AT 222 MARKET

222 Capitol Way N, Olympia, WA 98501



LEASE RATE:

**1,492 SF @ \$25.50/SF + \$7.50 NNN**

= \$4100.00 per month



**Debbie Draper-Aikins**

360 791 3869

debbie.draper@cbolympia.com



**COLDWELL BANKER  
COMMERCIAL**

EVERGREEN OLYMPIC  
REALTY, INC.

# FOR LEASE

## TAP ROOM AT 222 MARKET

222 Capitol Way N Olympia, WA 98501



### PROPERTY DESCRIPTION

COMPLETE TAP ROOM  
MOST EQUIPMENT INCLUDED  
LOCATED IN THE 222 MARKET DOWNTOWN OLYMPIA

### JOIN:

Chelsea Seafood  
Bread Peddler  
Sophie's Scoops  
Dos Hermanos Mexican  
Fleurae Floral  
Wild Sound Cellars

### OFFERING SUMMARY

Lease Rate:	\$25.50 SF/yr (Plus \$7.50 NNN)
Number of Units:	17
Available SF:	1,492 SF
Building Size:	14,378 SF

DEMOGRAPHICS	0.3 MILES	0.5 MILES	1 MILE
Total Households	915	1,420	4,640
Total Population	1,221	2,043	8,689
Average HH Income	\$66,366	\$72,265	\$89,882

**Debbie Draper-Aikins**  
360.791.3869  
debbie.draper@cbolympia.com



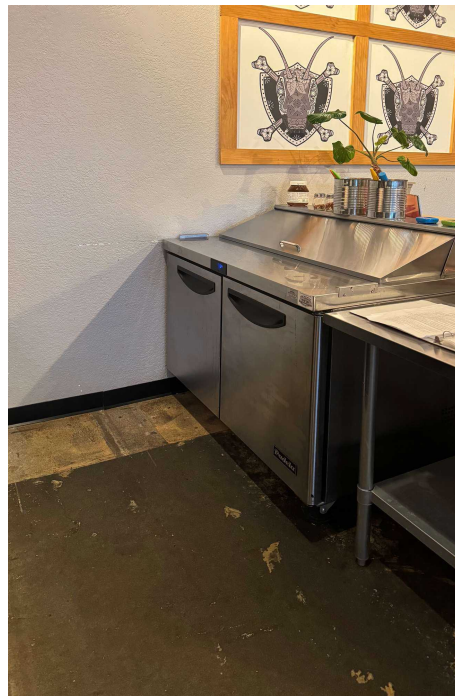
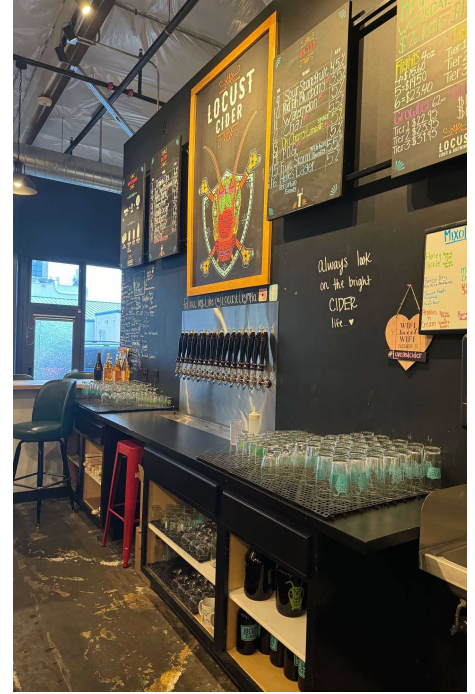
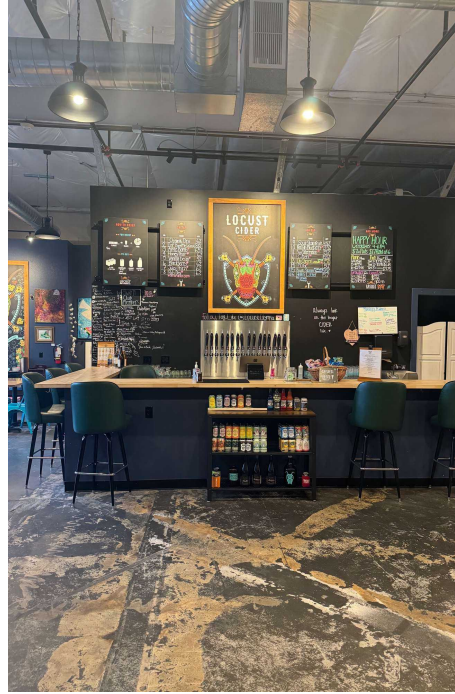
**COLDWELL BANKER  
COMMERCIAL**  
EVERGREEN OLYMPIC  
REALTY, INC.



# FOR LEASE

## TAP ROOM AT 222 MARKET

222 Capitol Way N Olympia, WA 98501



**Debbie Draper-Aikins**  
360.791.3869  
debbie.draper@cbolympia.com



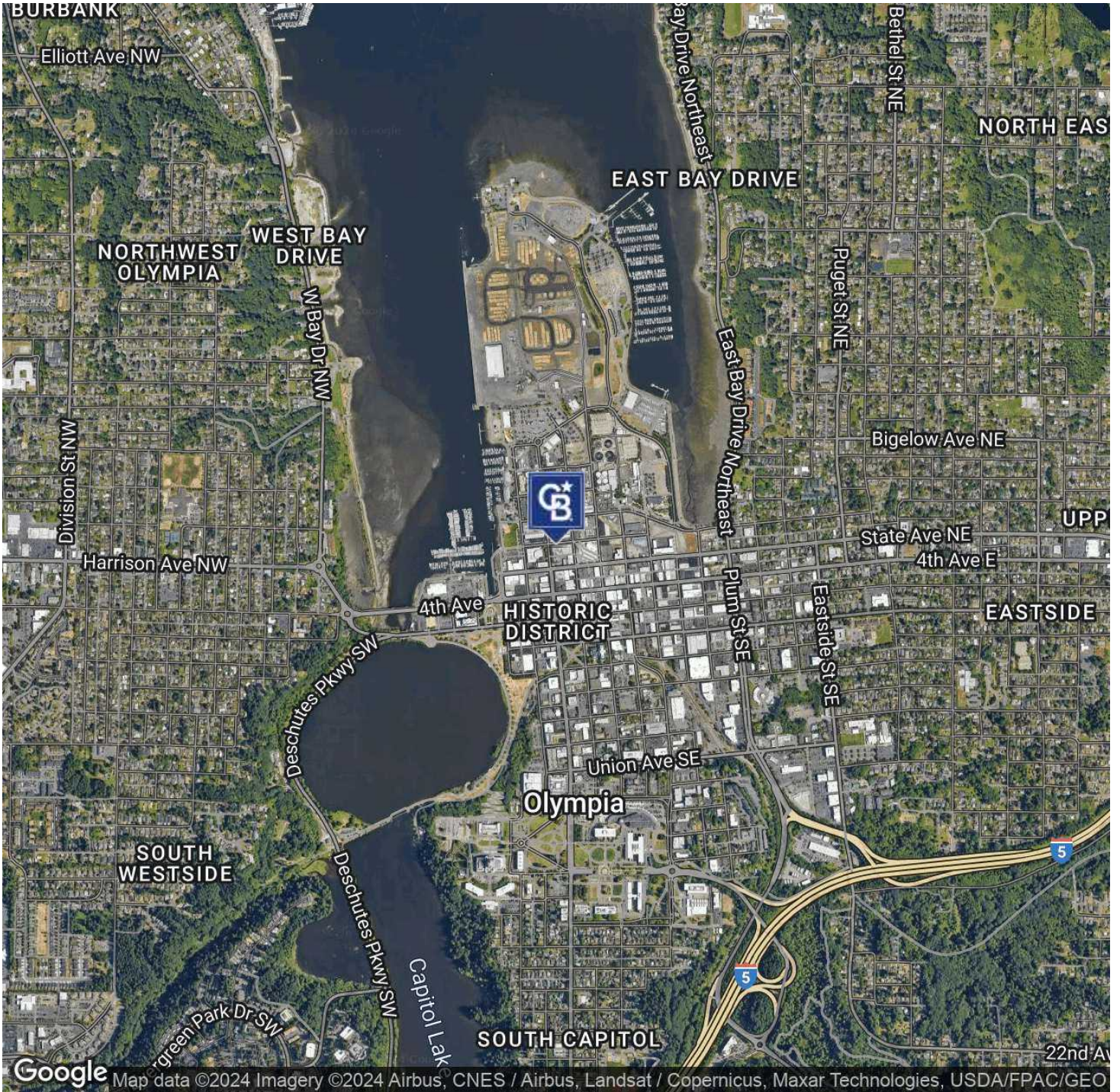
**COLDWELL BANKER  
COMMERCIAL**  
EVERGREEN OLYMPIC  
REALTY, INC.



# FOR LEASE

## TAP ROOM AT 222 MARKET

222 Capitol Way N Olympia, WA 98501



**Debbie Draper-Aikins**  
360.791.3869  
debbie.draper@cbolympia.com



**COLDWELL BANKER  
COMMERCIAL**  
EVERGREEN OLYMPIC  
REALTY, INC.