

FOR LEASE

702 South Hill Park Dr
Puyallup, WA 98373



SOUTH HILL PARK PROFESSIONAL CENTER

Jamie Firth | Lisa Tallman

First Western Properties—Tacoma Inc. | 253.472.0404
6402 Tacoma Mall Blvd, Tacoma, WA 98409 | fwp-inc.com

AVAILABLE: PROFESSIONAL OFFICE SPACE

SUITE 202 | ± 474 SF | \$22.00 PSF

SUITE 205 | ± 631 SF | \$22.00 PSF

SUITE 208 | ± 1,832 SF | \$22.00 PSF



- NNN: \$9.94 PSF
- Medical, office, professional, and service retail uses
- Excellent access with abundant parking
- Monument and building signage available
- Close proximity to Good Samaritan Hospital
- Adjacent to South Hill Mall and SR 512 interchange
- Close access to SR 512 and Interstate 5 exchange

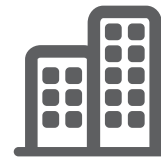
SUMMARY



Population



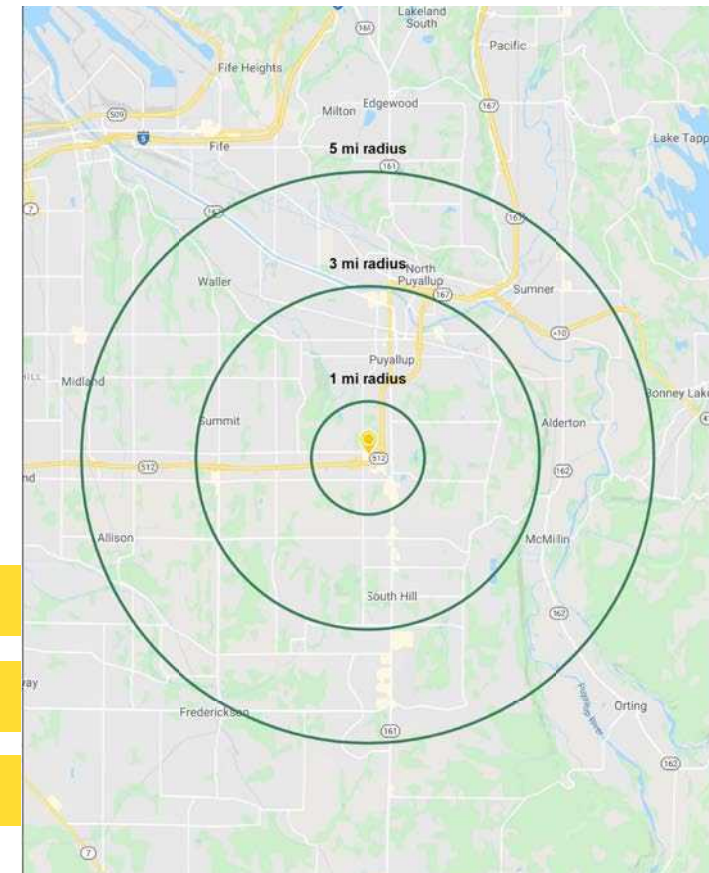
Average HH Income

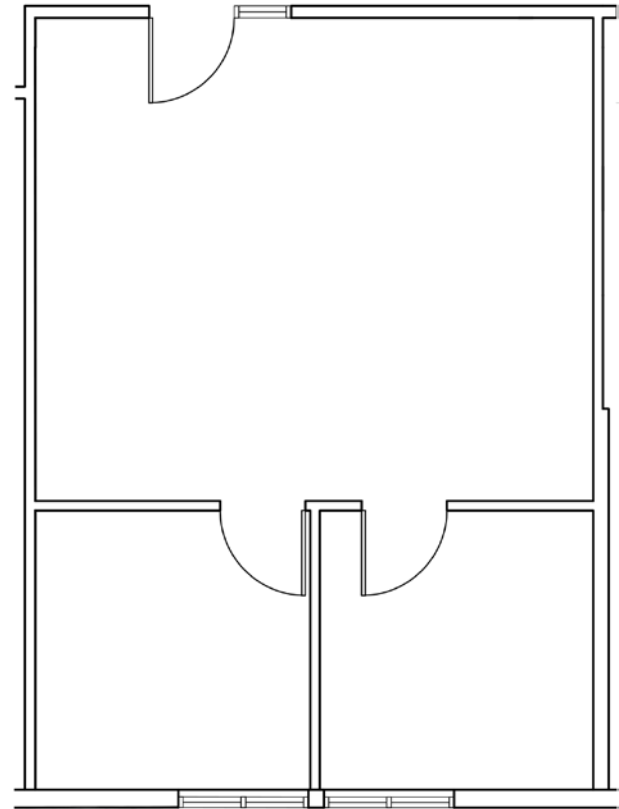
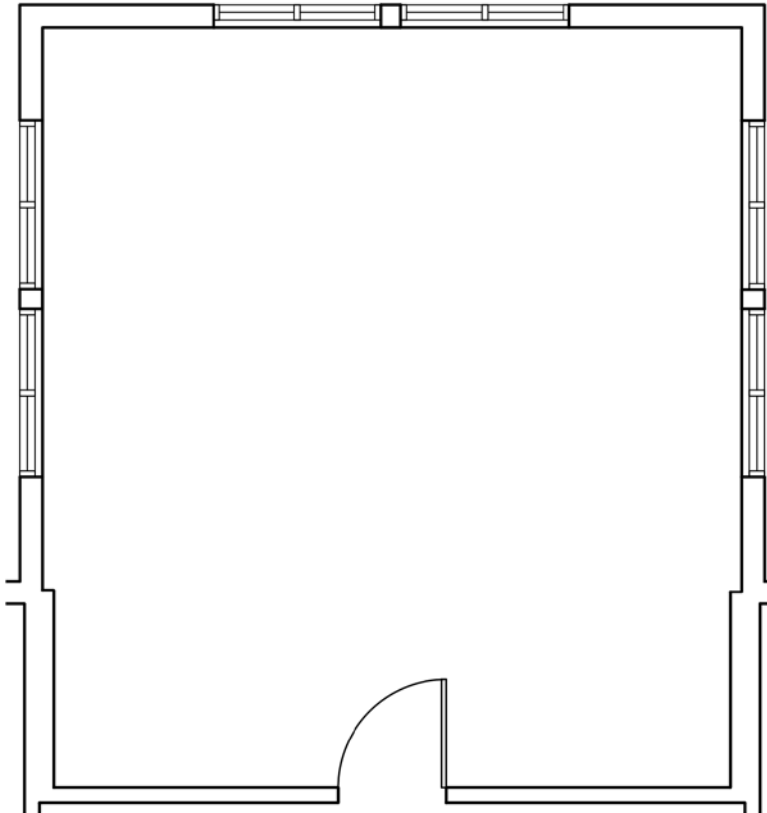


Daytime Population

Regis - 2024

	Population	Average HH Income	Daytime Population
Mile 1	9,811	\$115,897	8,778
Mile 3	88,253	\$133,530	54,405
Mile 5	175,558	\$137,108	100,619

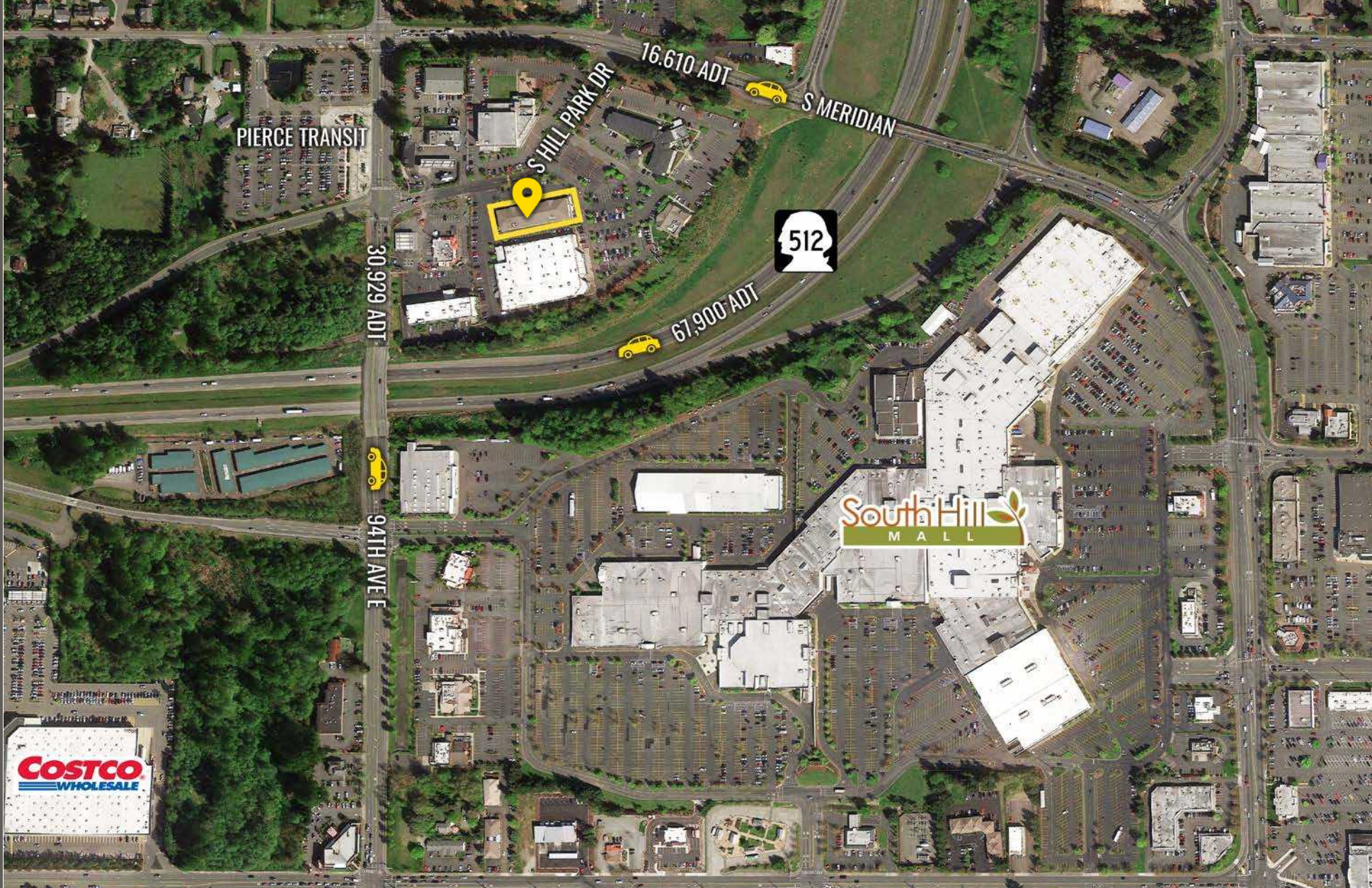




LOCATION AERIAL



LOCATION DETAILS



Located Moments
from SR-512



Close Proximity to
the South Hill Mall



30,929 ADT
94th Ave. E





67,900 ADT
SR-512

RELATIONSHIP FOCUSED.
RESULTS DRIVEN.


South Hill Park PROFESSIONAL CENTER	
101	201 Willamette Dental
102	202 Eclipse Wealth Strategies
103 Allstate Insurance Jay Milsten	203 Skyline Properties, Inc.
104	204 Intevision Wellness Counseling • Hypnotherapy
105 Greater Puyallup Dialysis Center	207 WINDSOR Real Estate


JAMIE FIRTH

 253.284.3649

 jamie@firstwesternproperties.com

LISA TALLMAN

 253.471.5504

 lisa@firstwesternproperties.com

