

# SNOHOMISH YARD

FOR SALE: \$799,000

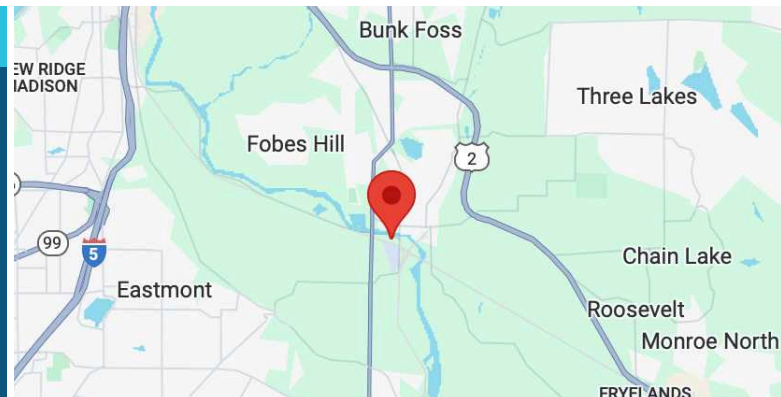
95XX LOWELL SNOHOMISH RIVER RD | SNOHOMISH, WA

## 1.70 ACRE LIGHT INDUSTRIAL YARD



### BUILDING INFORMATION

- 1.70 Acres (74,052 SF)
- Zoned LI (Light Industrial - Snohomish County)
- Parcel #28051300403200
- Land is flat and level



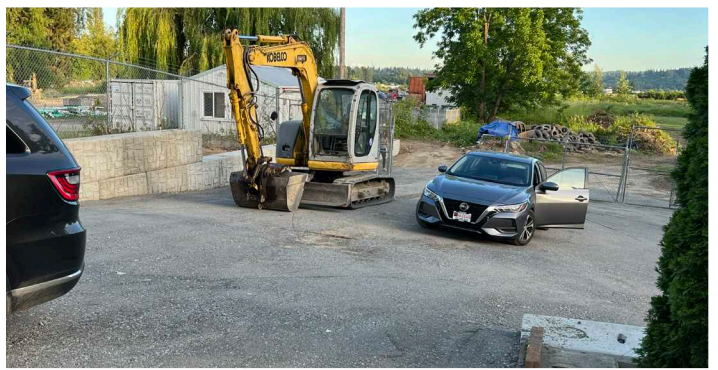
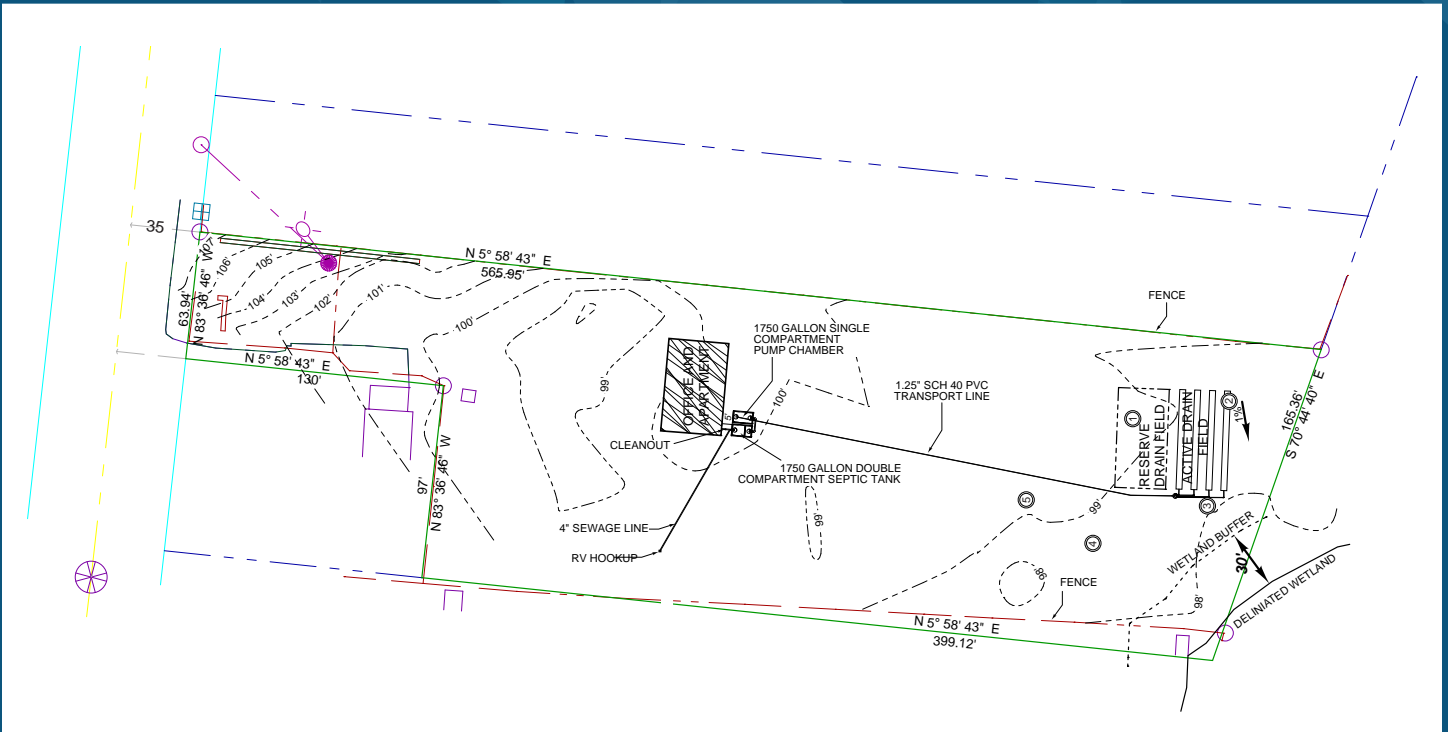
**FLETCHER FARRAR**  
206.787.1469  
ffarrar@neilwalter.com

**BEN DAVIDSON**  
206.787.1470  
bdavidson@neilwalter.com

All information references in this document are approximate. The information contained herein is contained from sources deemed reliable. It is provided without representation, warranty, or guarantee, expressed or implied as to accuracy. Prospective buyer or tenant should conduct its own independent investigation relating to the property, government codes and regulations, allowed uses, and all other matters, regardless of whether they are referred to or contained in this document.

# SNOHOMISH YARD

95XX LOWELL SNOHOMISH RIVER RD | SNOHOMISH, WA



**FLETCHER FARRAR**  
206.787.1469  
ffarrar@neilwalter.com

**BEN DAVIDSON**  
206.787.1470  
bdavidson@neilwalter.com

550 S Michigan St  
Seattle, WA 98108  
206.787.1800  
www.neilwalter.com

All information references in this document are approximate. The information contained herein is contained from sources deemed reliable. It is provided without representation, warranty, or guarantee, expressed or implied as to accuracy. Prospective buyer or tenant should conduct its own independent investigation relating to the property, government codes and regulations, allowed uses, and all other matters, regardless of whether they are referred to or contained in this document.