

# ST. GEORGE'S SQUARE

355 NW GILMAN BLVD  
ISSAQUAH, WA 98027

PACIFIC ASSET ADVISORS, INC.



## LISTING DETAILS



RENTABLE SF  
558 -  
2,477 SF

CALL  
FOR  
RATE  
\$11/SF NNN

**ADDRESS:** 355 NW Gilman Blvd  
Issaquah, WA 98027

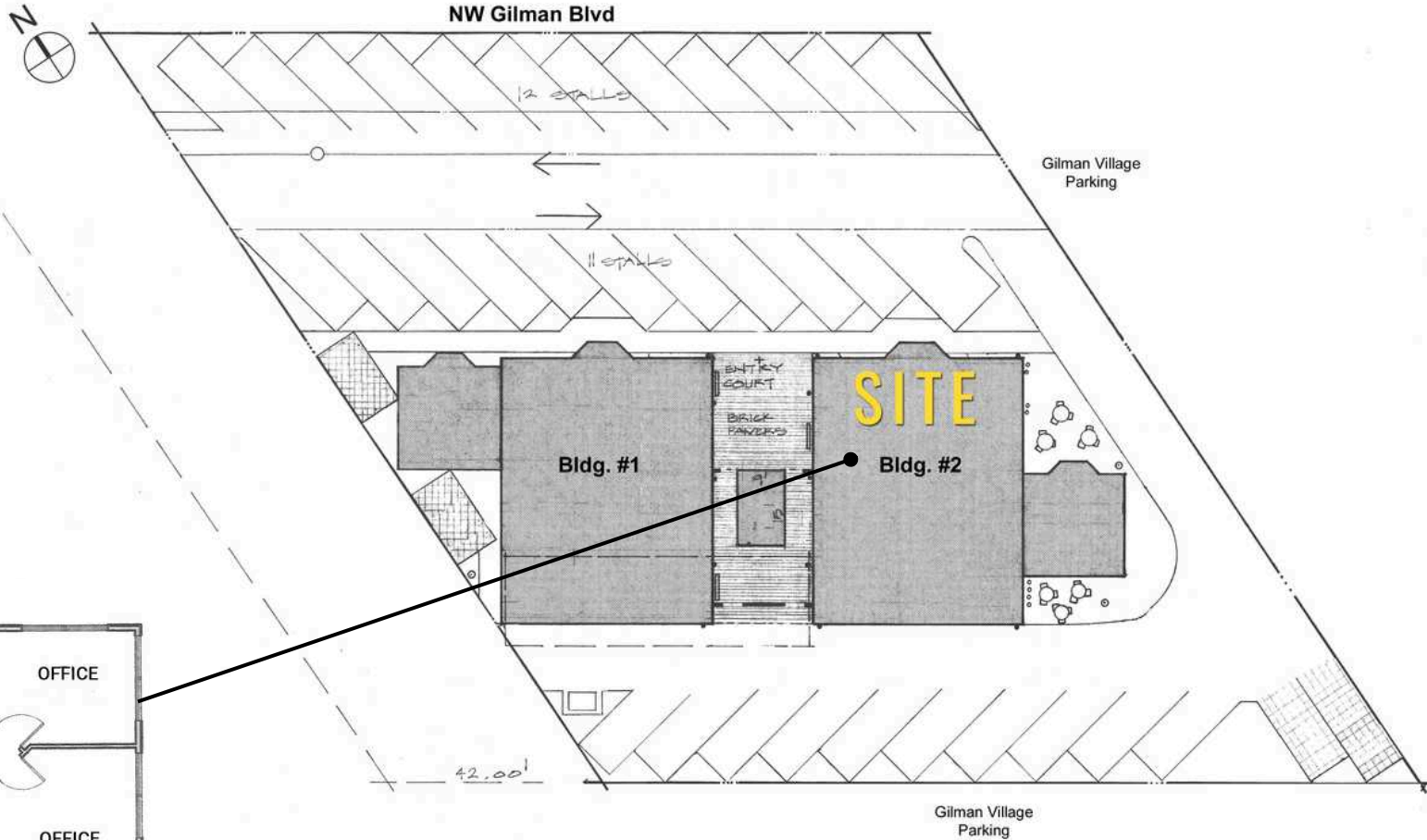
**SPACE AVAILABLE:** -Suite 201 - 2,477 SF  
Building 2, 2nd Floor Office  
-Suite 204 - 946 SF  
-Suite 202 - 558 SF

**SURROUNDING AREA:** Target, Ross Dress for Less, Safeway, Hobby Lobby, Trader Joe's, Fred Meyer...

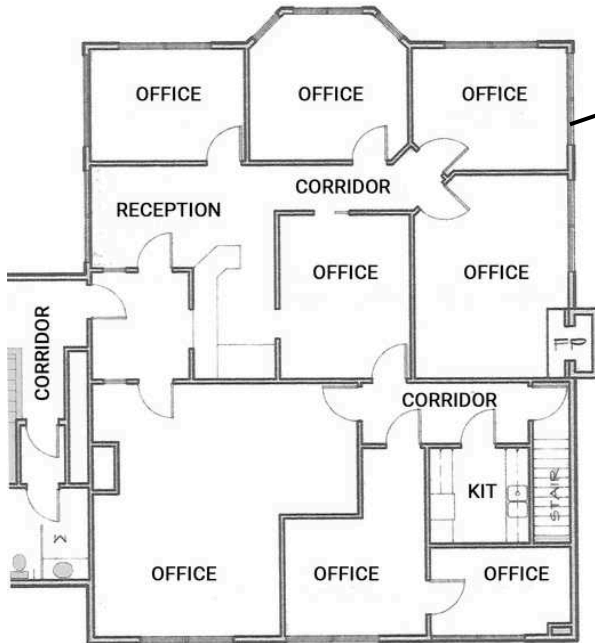
	1 MILE	3 MILES	5 MILES
<b>MEDIAN INCOME:</b>	\$142,268	\$175,905	\$198,982
<b>TOTAL POPULATION:</b>	11,060	59,555	117,176
<b>DAYTIME POPULATION:</b>	12,281	32,598	57,498

425.990.6200 | PAADVISORS.COM

# SITE PLAN



## SUITE 201





# AERIAL



64,971 VPD



ISSAQUAH SCHOOL DISTRICT HQ



SWEDISH ISSAQUAH CAMPUS





# CONTACT



**ADAM GREENBERG**  
SENIOR VICE PRESIDENT  
PARTNER  
425.503.1339  
ADAM@PAADVISORS.COM



**TYSON CLARKE**  
SENIOR VICE PRESIDENT  
PARTNER  
360.319.4855  
TYSON@PAADVISORS.COM

**PACIFIC ASSET ADVISORS, INC.**

THE PREMIER CHOICE OF THE PACIFIC NORTHWEST

14205 SE 36TH ST, SUITE 215, BELLEVUE, WA 98006