



CBRE

# BALLINGER COMMONS

19929 BALLINGER WAY NE, SHORELINE WA

# BALLINGER COMMONS

## AVAILABLE SPACE

### SUITE 200 | 2,350 RSF

- Elevator served, for ADA accessibility
- 10 private offices
- Reception area
- Break room
- Conference room

## PROPERTY FEATURES

- Two-Story Office/Medical Building, with frontage to Ballinger Way
- Building monument signage available
- Free on-site parking
- Situated on Ballinger Way, with Excellent Access to I-5
- On-site building ownership and property management

## LEASE RATE

- \$22.00/SF/Year, NNN

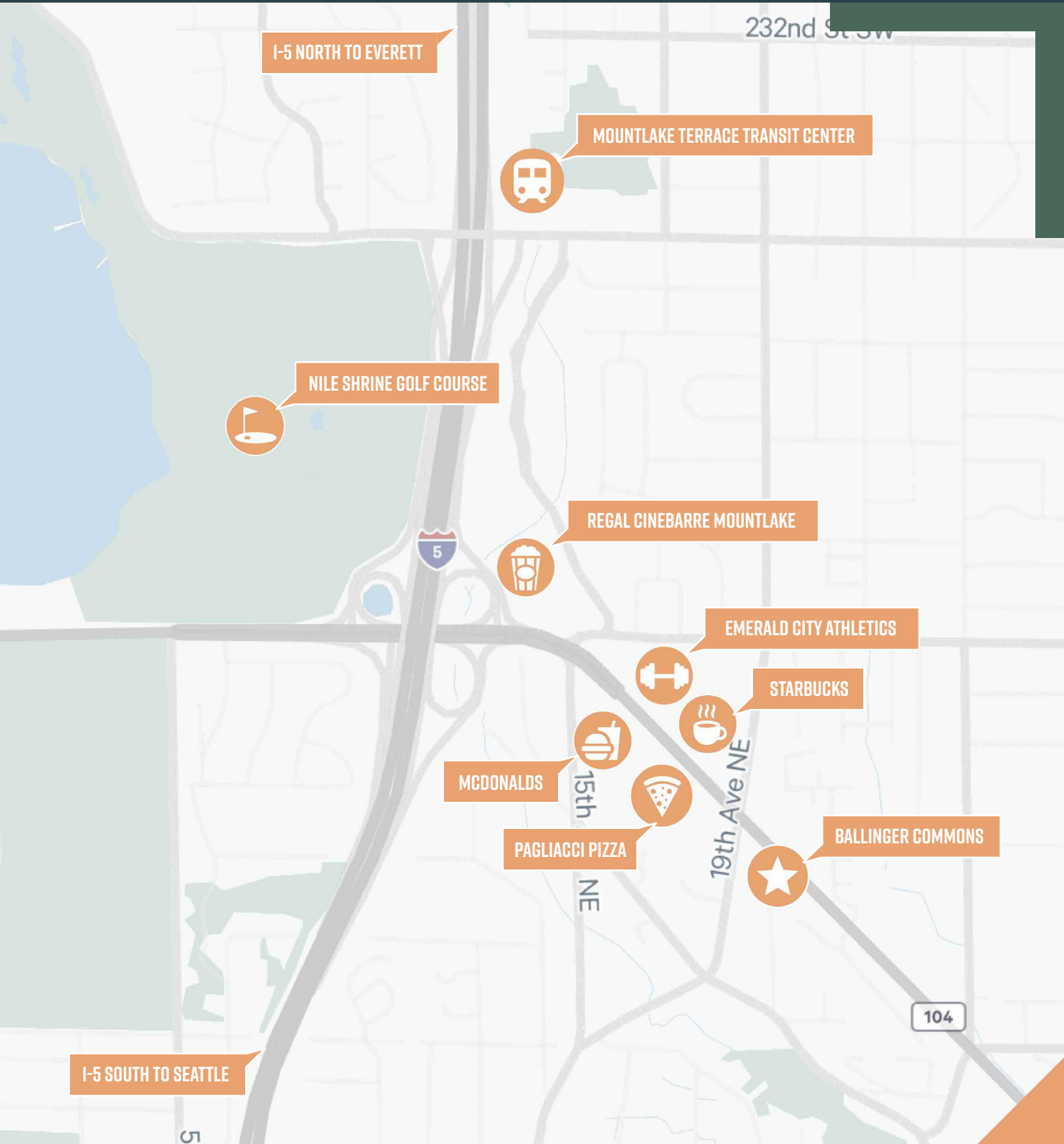


# FLOORPLAN

SUITE 200



# AMENITY MAP



I-5 NORTH TO EVERETT

232nd St SW

MOUNTLAKE TERRACE TRANSIT CENTER



NILE SHRINE GOLF COURSE



REGAL CINEBARRE MOUNTLAKE



EMERALD CITY ATHLETICS



STARBUCKS



MCDONALDS



15th

PAGLIACCI PIZZA



NE

19th Ave NE

BALLINGER COMMONS

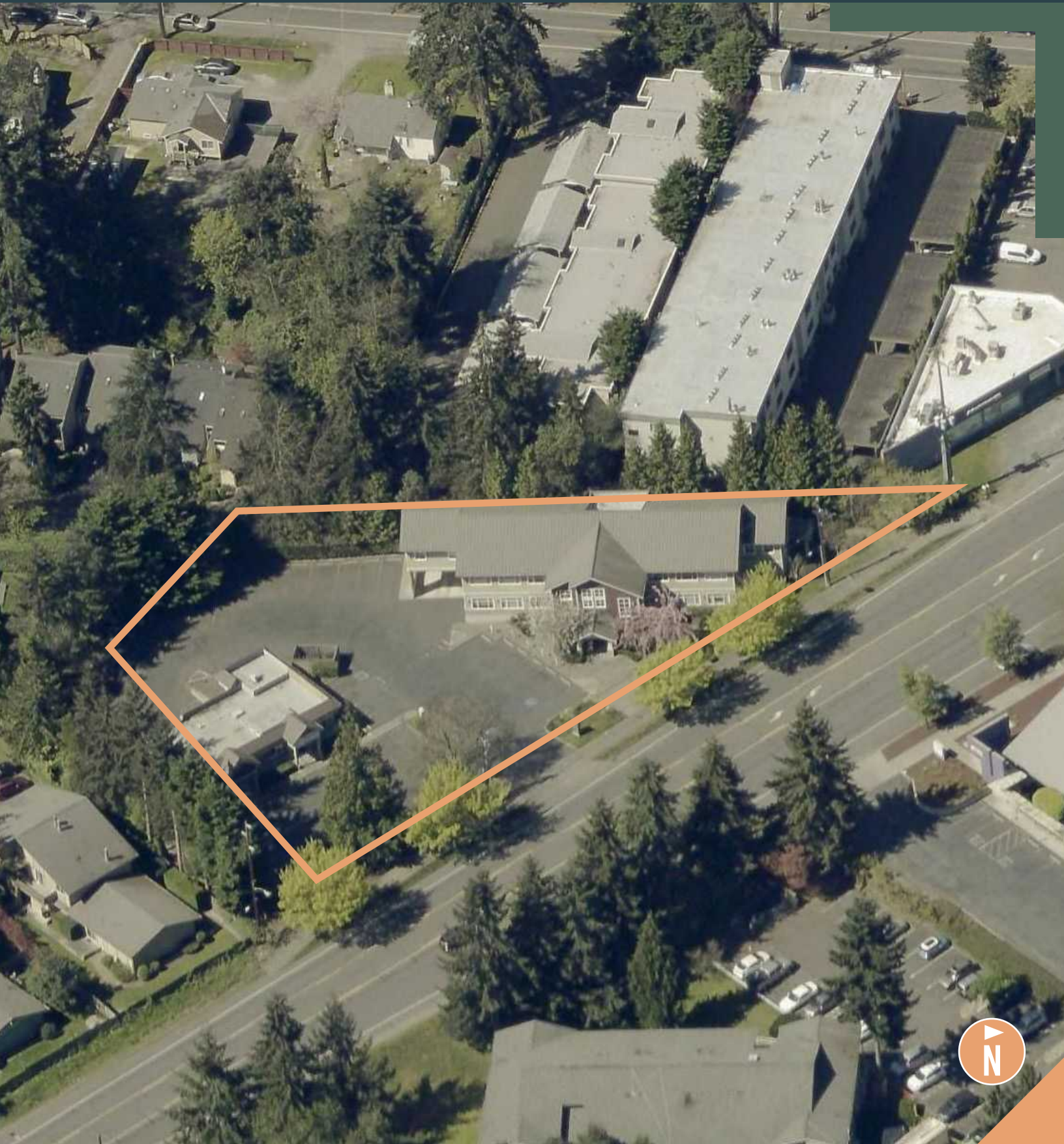


104

I-5 SOUTH TO SEATTLE

5

# AERIAL OF BALLINGER COMMONS



# BALLINGER COMMONS

19929 BALLINGER WAY NE, SHORELINE WA



## CONTACTS

Erik Larson  
Senior Vice President  
+1 425 462 6954  
erik.larson@cbre.com

Ric Brandt  
Senior Vice President  
+1 425 462 6901  
ric.brandt@cbre.com

John Bauer  
Senior Vice President  
+1 425 462 6906  
john.bauer@cbre.com

**CBRE**

© 2024 CBRE, Inc. All rights reserved. This information has been obtained from sources believed reliable but has not been verified for accuracy or completeness. CBRE, Inc. makes no guarantee, representation or warranty and accepts no responsibility or liability as to the accuracy, completeness, or reliability of the information contained herein. You should conduct a careful, independent investigation of the property and verify all information. Any reliance on this information is solely at your own risk. CBRE and the CBRE logo are service marks of CBRE, Inc. All other marks displayed on this document are the property of their respective owners, and the use of such marks does not imply any affiliation with or endorsement of CBRE. Photos herein are the property of their respective owners. Use of these images without the express written consent of the owner is prohibited.