

# SEATTLE EXCHANGE @ SOUTHCENTER



NEWLY RENOVATED

601-699 STRANDER BOULEVARD | TUKWILA | WASHINGTON | 98188

## FOR MORE INFORMATION:

**SEAN DURKIN, SIOR, MSRE, CCIM**  
425.830.2647  
sdurkin@lee-associates.com

**JOHN BRUSSA**  
425.891.1424  
jbrussa@lee-associates.com

**SCOTT HILL**  
510.393.6661  
shill@lee-associates.com

## PROPERTY FEATURES

- Newly renovated turnkey suites available for immediate occupancy
- Flexible configuration options: 200 - 10,000 SF
- All roll-up doors are approximately 10'x10'
- Rare dock high spaces under 10,000 SF
- Flex, warehouse and pure office suites available
- Flexible lease structures available
- On-site management for quick response
- Zoned TUC (City of Tukwila)
- Close to Westfield Southcenter Mall and Costco

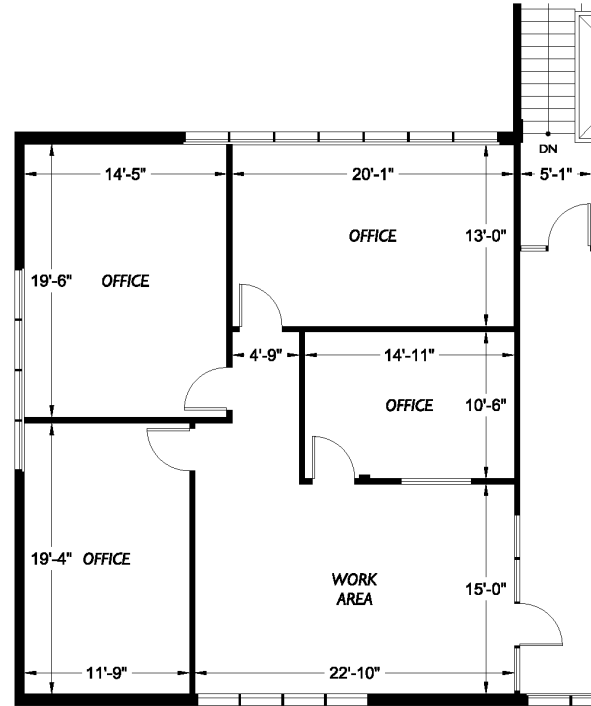
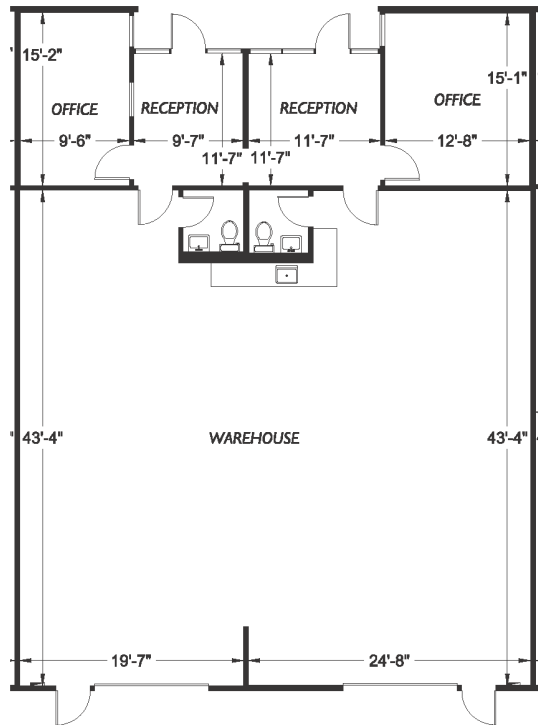
## PROPERTY WEBSITE



*The information contained herein is believed to be accurate but is not warranted as to its accuracy and may change or be updated without notice. Seller or landlord makes no representation as to the environmental condition of the property and recommends purchaser's or tenant's independent investigation.*

# SEATTLE EXCHANGE @ SOUTHCENTER

## SITE PLAN



Sample Floor Plans



### FOR MORE INFORMATION

**SEAN DURKIN, SIOR, MSRE, CCIM**  
 425.830.2647  
 sdurkin@lee-associates.com

**JOHN BRUSSA**  
 425.891.1424  
 jbrussa@lee-associates.com

**SCOTT HILL**  
 510.393.6661  
 shill@lee-associates.com

**SEATTLE EXCHANGE @ SOUTHCENTER**  
 601-699 STRANDER BOULEVARD  
 TUKWILA, WA 98188



### REPRESENTATIVE LIST AVAILABILITIES

SUITE	TOTAL SF	OFFICE SF	ASKING RATE
Bldg 30 - 1010 & 1012	4,225	1,523	\$2.10 PSF / Month, Modified Gross
Bldg 40 - 1146-1148	2,717	721	\$2.10 PSF / Month, Modified Gross
Bldg 32 - 1030	2,410	540	\$2.10 PSF / Month, Modified Gross
Bldg 6 - 576	1,541	1,541	\$2.00 PSF / Month, Full Service
Bldg D - 607	1,460	683	\$2.10 PSF / Month, Modified Gross
Bldg C - 697	740	371	\$2.10 PSF / Month, Modified Gross
Bldg 4 - 560	714	714	\$2.00 PSF / Month, Full Service

# SEATTLE EXCHANGE @ SOUTHCENTER



## FOR MORE INFORMATION

**SEAN DURKIN, SIOR, MSRE, CCIM**  
425.830.2647  
sdurkin@lee-associates.com

**JOHN BRUSSA**  
425.891.1424  
jbrussa@lee-associates.com

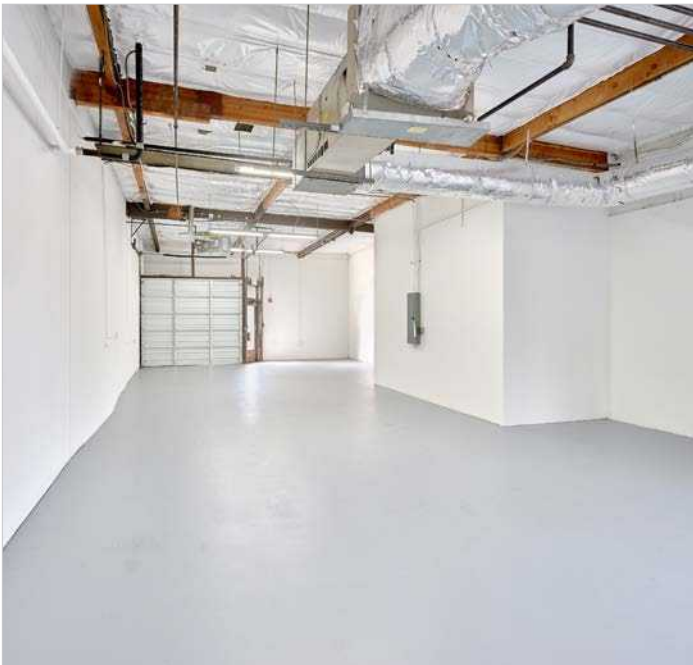
**SCOTT HILL**  
510.393.6661  
shill@lee-associates.com

**LEE & ASSOCIATES**  
170 120th Avenue NE, Suite 203  
Bellevue, WA 98005  
www.lee-nw.com

---

**SEATTLE EXCHANGE @  
SOUTHCENTER**  
601-699 STRANDER BOULEVARD  
TUKWILA, WA 98188

 **LEE &  
ASSOCIATES**  
COMMERCIAL REAL ESTATE SERVICES



# SEATTLE EXCHANGE @ SOUTHCENTER

## AMENITIES & IMPROVEMENTS



### NEARBY AMENITIES

- Costco
- Home Depot
- REI
- Courtyard by Marriott
- Dick's Sporting Goods
- Westfield Mall

### FOR MORE INFORMATION

**SEAN DURKIN, SIOR, MSRE, CCIM**  
425.830.2647  
sdurkin@lee-associates.com

**JOHN BRUSSA**  
425.891.1424  
jbrussa@lee-associates.com

**SCOTT HILL**  
510.393.6661  
shill@lee-associates.com

**SEATTLE EXCHANGE @ SOUTHCENTER**  
601-699 STRANDER BOULEVARD  
TUKWILA, WA 98188



NEARBY AMENITIES