

For Lease

Retail/Warehouse

NAI Black



2110 1st Street

Cheney, Washington 99004

Property Description

Building Size: 6,400± SF

- Gas Heat
- Electrical: 200 Amp, single-phase
- New Roof Installed 2024

Lot Size: 19,800± SF

- Parcel ID: 13124.0026

Frontage: 100' along 1st Street

Traffic: 17,000 ADT

Signage: Existing Pylon

Location: Premier retail exposure at the epicenter of neighboring national retailers and anchored shopping centers (see pg. 3 aerial for details)

Lease Rate: \$3,200/mo. NNN



For more information

Jim Orcutt

O: 509 622 3558

jorcutt@naiblack.com

Mark C. McLees

O: 509 622 3554

mmclees@naiblack.com

No warranty or representation, expression or implied, is made as to the accuracy of the information contained herein, and the same is submitted subject to errors, omissions, change or price, rental or other conditions, prior to sale, lease, financing, or withdrawal without notice, and of special listing conditions imposed by our principals no warranties or representations are made as to the condition of the property or any hazards contained therein or any to be implied.

801 W. Riverside Avenue, Suite 300

Spokane, WA 99201

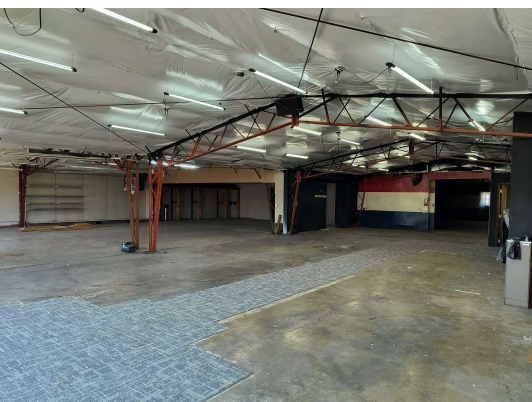
509 623 1000 tel

naiblack.com

For Lease

Retail/Warehouse

NAI Black



No warranty or representation, expression or implied, is made as to the accuracy of the information contained herein, and the same is submitted subject to errors, omissions, change or price, rental or other conditions, prior to sale, lease, financing, or withdrawal without notice, and of special listing conditions imposed by our principals no warranties or representations are made as to the condition of the property or any hazards contained therein or any to be implied.

801 W. Riverside Avenue, Suite 300
Spokane, WA 99201
509 623 1000 tel
naiblack.com

For Lease
Retail/Warehouse

NAIBlack



No warranty or representation, expression or implied, is made as to the accuracy of the information contained herein, and the same is submitted subject to errors, omissions, change or price, rental or other conditions, prior to sale, lease, financing, or withdrawal without notice, and of special listing conditions imposed by our principals no warranties or representations are made as to the condition of the property or any hazards contained therein or any to be implied.

801 W. Riverside Avenue, Suite 300
Spokane, WA 99201
509 623 1000 tel
naiblack.com