

SEAWAY BUSINESS PARK

1500 Industry Street | **BUILDING H** | Everett, WA



SEAWAY

BUSINESS PARK

1500 Industry Street | **BUILDING H** | Everett, WA

38,001 SF
TOTAL AVAILABLE

OFFICE SPACE AVAILABLE
6,480 SF

FIRST FLOOR
3,240 SF

SECOND FLOOR:
3,240 SF

24' CLEAR
FULLY INSULATED
WAREHOUSE AREA
31,521 SF

16
DOCK HIGH
DOORS

1 GRADE LEVEL

DOOR OPENS TO
COVERED LOADING
DOOR WITH GRADE
LEVEL AND DOCK
HIGH LOADING

LOCATION

BRODERICK
• GROUP •

**PAINE FIELD
AIRPORT**

**MUKILTEO
SPEEDWAY**

**MUKILTEO
LIGHTHOUSE
PARK**

BOEING

SEAWAY BLVD

**SEAWAY
BUSINESS PARK**

1500 Industry Street | **BUILDING H** | Everett, WA

526

DRIVE TIMES

35 MINUTES

TO DOWNTOWN SEATTLE

35 MINUTES

TO DOWNTOWN BELLEVUE

HARDESON RD

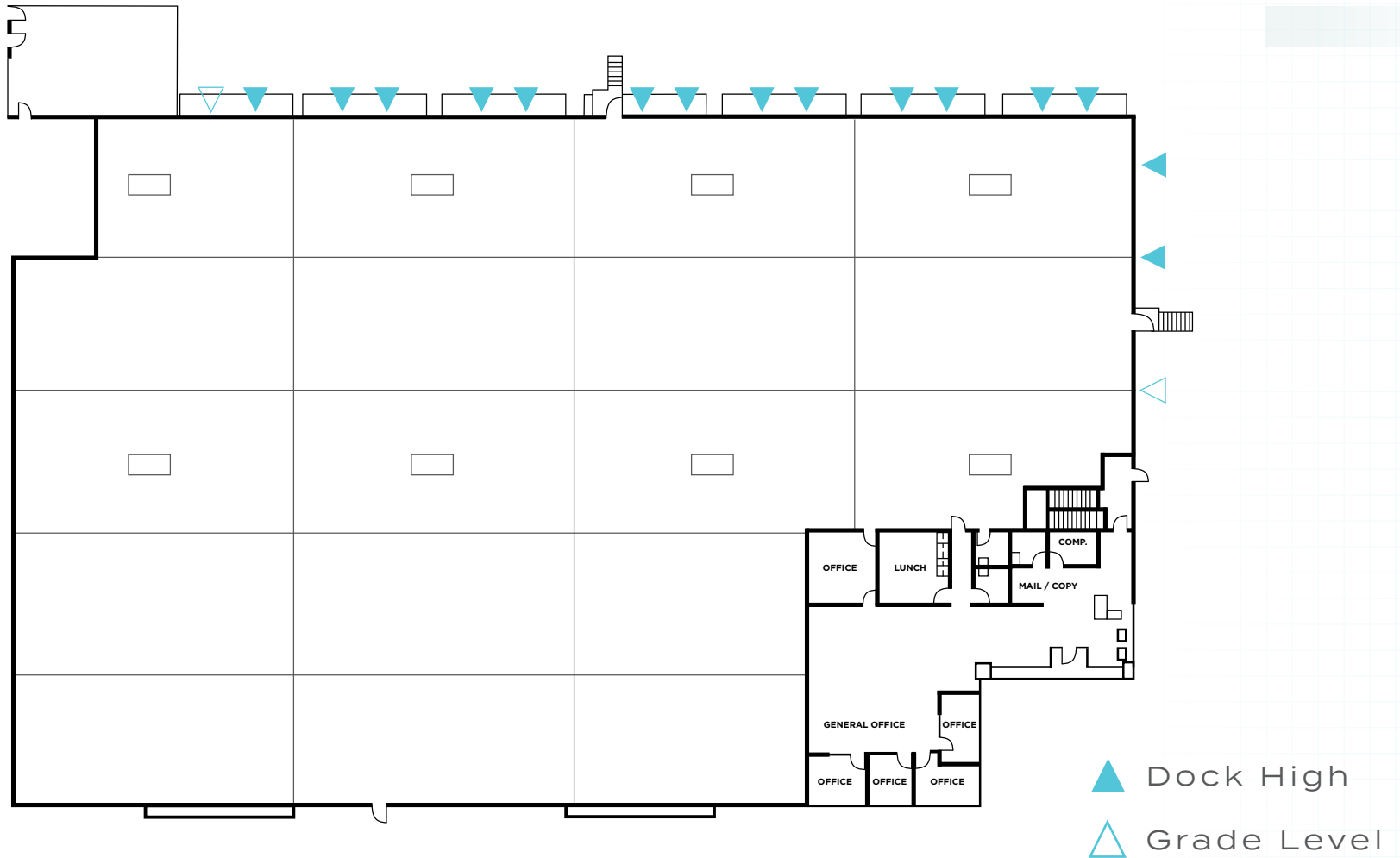
MERRILL CREEK PKWY
INDUSTRY ST

SEAWAY

BUSINESS PARK

1500 Industry Street | BUILDING H | Everett, WA

FULL FLOOR



AL HODGE | (425) 646-5240 | hodge@broderickgroup.com

ERIC MEUSSNER | (425) 274-4282 | meussner@broderickgroup.com

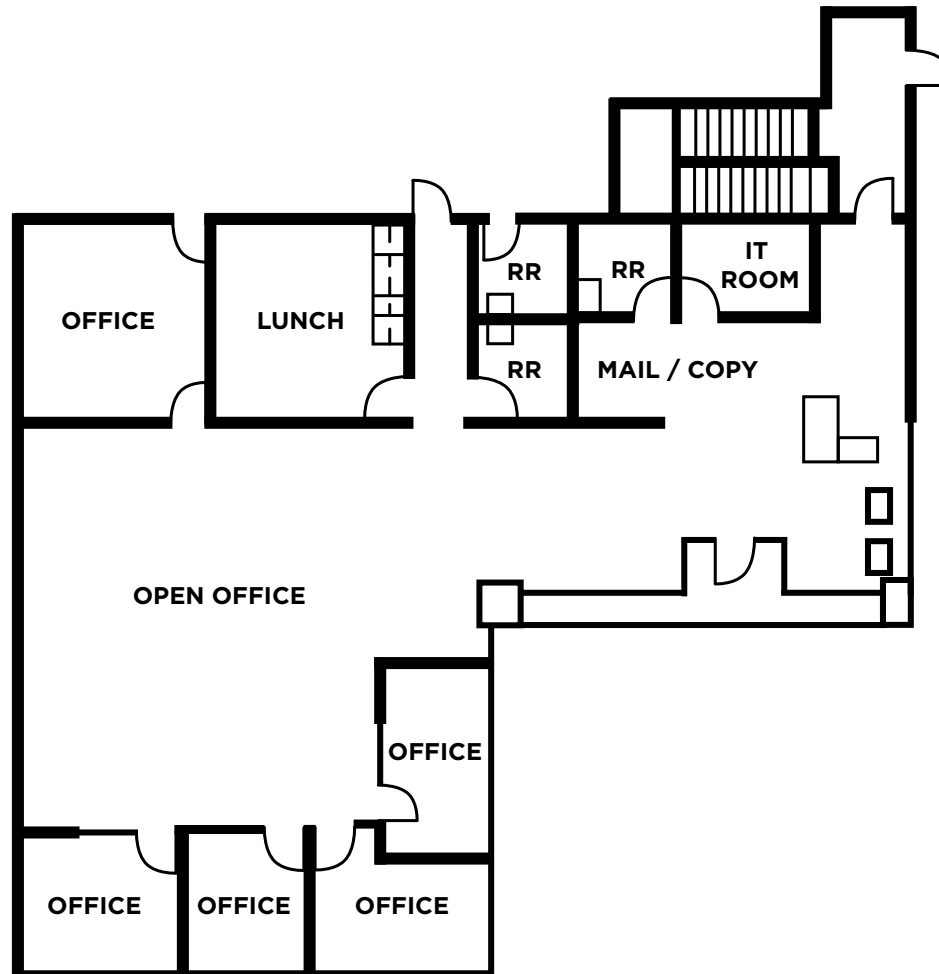
The information contained herein has been given to us by the owner or sources that we deem reliable. We have no reason to doubt its accuracy, but we do not guarantee it. Prospective tenants should carefully verify all information contained herein.

SEAWAY

BUSINESS PARK

1500 Industry Street | **BUILDING H** | Everett, WA

FIRST FLOOR
OFFICE SPACE
3,240 SF



AL HODGE | (425) 646-5240 | hodge@broderickgroup.com

ERIC MEUSSNER | (425) 274-4282 | meussner@broderickgroup.com

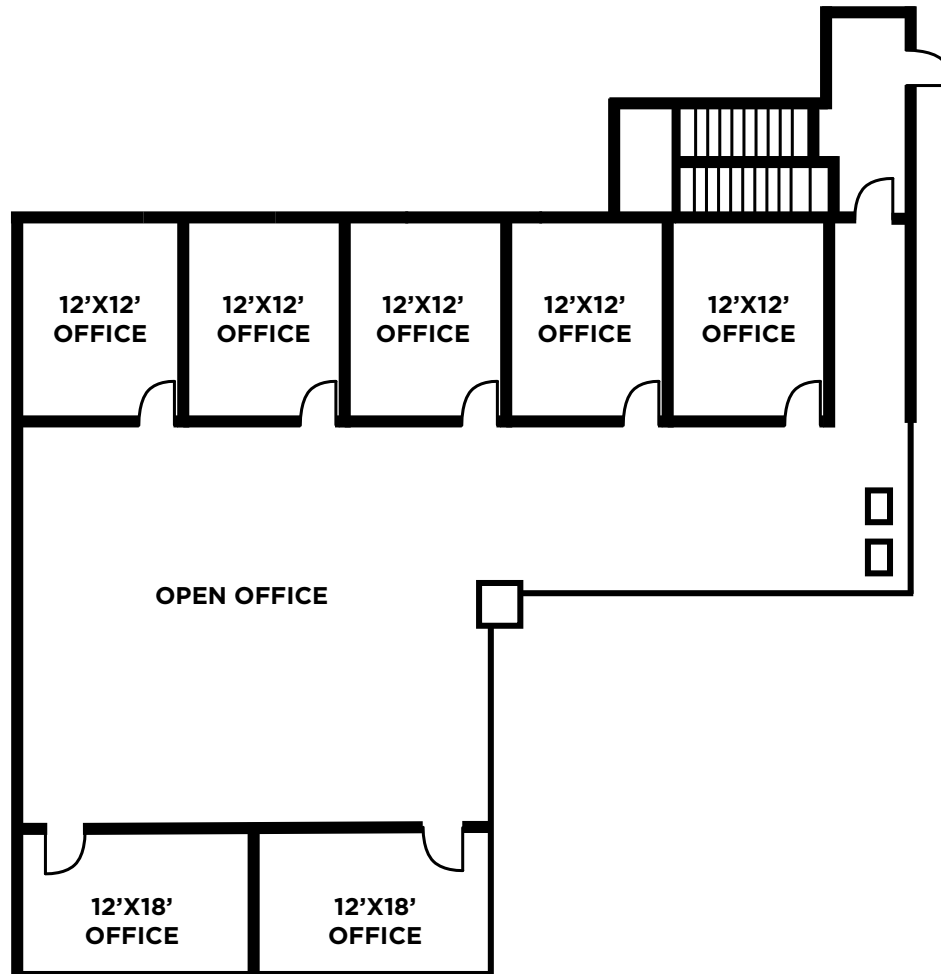
The information contained herein has been given to us by the owner or sources that we deem reliable. We have no reason to doubt its accuracy, but we do not guarantee it. Prospective tenants should carefully verify all information contained herein.

SEAWAY

BUSINESS PARK

1500 Industry Street | BUILDING H | Everett, WA

SECOND FLOOR
OFFICE SPACE
3,240 SF



AL HODGE | (425) 646-5240 | hodge@broderickgroup.com

ERIC MEUSSNER | (425) 274-4282 | meussner@broderickgroup.com

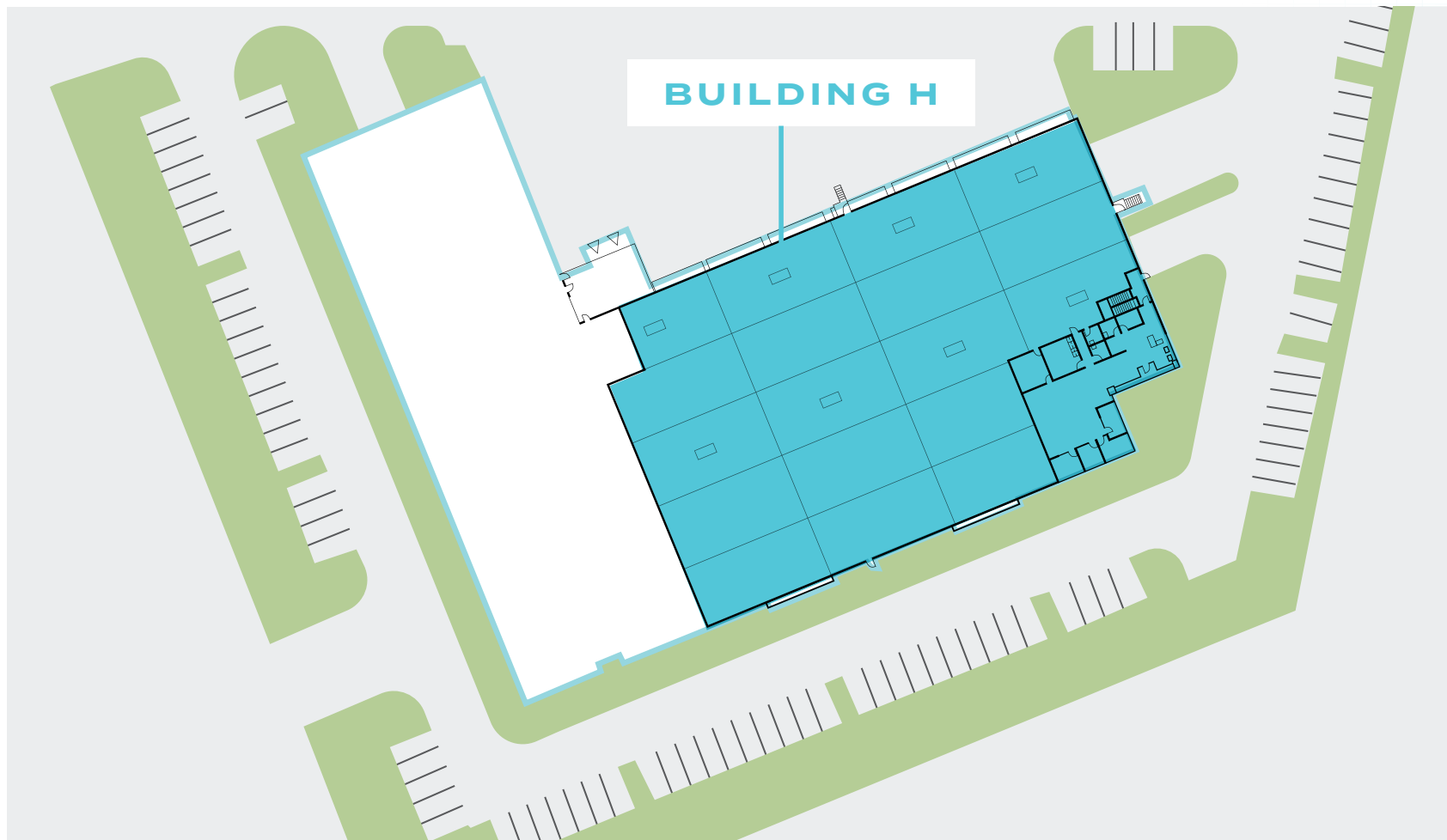
The information contained herein has been given to us by the owner or sources that we deem reliable. We have no reason to doubt its accuracy, but we do not guarantee it. Prospective tenants should carefully verify all information contained herein.

SEAWAY

BUSINESS PARK

1500 Industry Street | **BUILDING H** | Everett, WA

SITE PLAN



AL HODGE | (425) 646-5240 | hodge@broderickgroup.com

ERIC MEUSSNER | (425) 274-4282 | meussner@broderickgroup.com

The information contained herein has been given to us by the owner or sources that we deem reliable. We have no reason to doubt its accuracy, but we do not guarantee it. Prospective tenants should carefully verify all information contained herein.