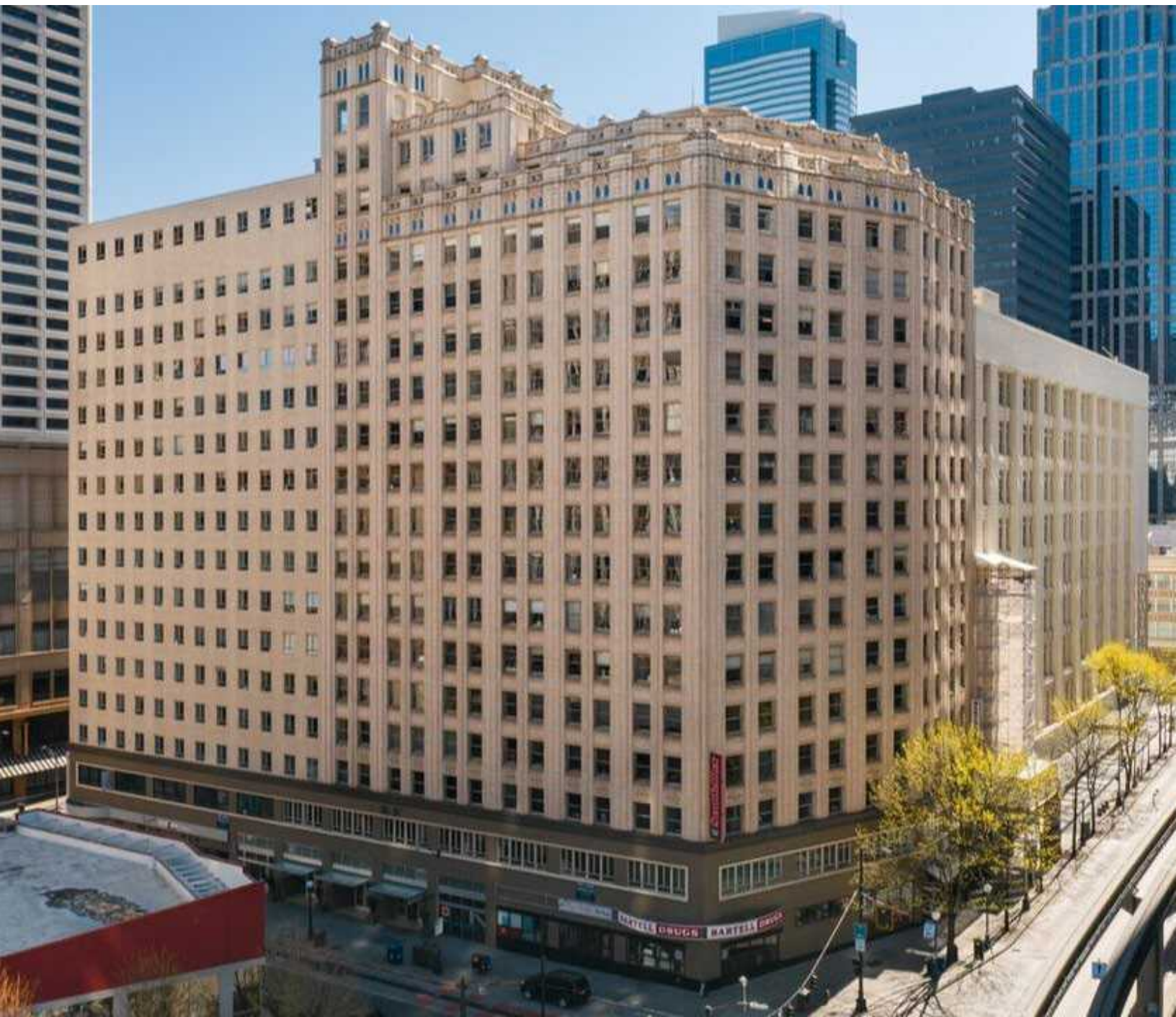


For sublease

Medical Dental Building | 509 Olive Way, Seattle
Floor 16: 488 RSF



Space highlights



Floor 16 : 488 RSF



Sublease term through: January 31, 2027
(option to renew at the end of term or secure a longer term now)



Secure your ideal office space with a competitive monthly rate.

Monthly Rent Schedule for the duration of the term:

- Sept 1, 2024 through Jan 31, 2025 \$1475.77 per month
- Feb 1, 2025 through Jan 31, 2026 1520.04 per month
- Feb 1, 2026 through Jan 31, 2027 1565.65 per month
- Enjoy the stability of a long-term lease with a preferred 27-month term. Utilities included.



Discover your ideal office space in the heart of downtown Seattle!

This turnkey, move-in ready suite offers a bright and efficient layout with an exceptional rate. Enjoy a thoughtfully designed build-out featuring:

- 2 large windows, ensuring plenty of natural light
- Two Treatment Rooms
- A Consultation Room complete with a kitchenette, including storage cabinets, a sink, and an optional fridge/freezer
- A Spacious Open Area/Reception perfect for welcoming clients and showcasing retail displays
- LED Lighting throughout the suite
- Custom Blackout Blinds included for your convenience



Building highlights

The building is impeccably maintained and comes with a fabulous amenity package

Medical Dental Building Tenant amenities:

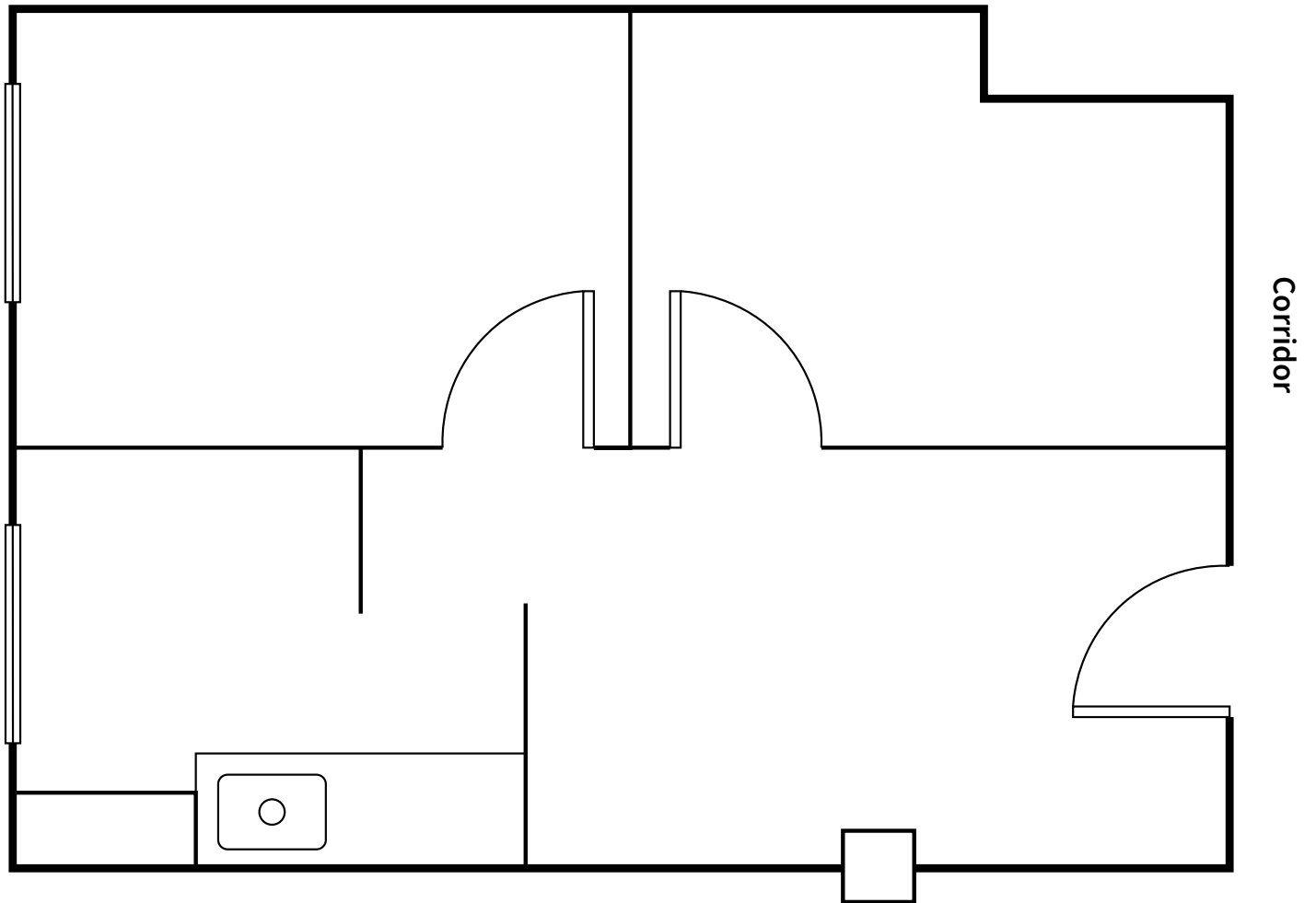
- Housekeeping
- Tenant Lounge
- Bike storage
- Mail room
- Package/delivery room w/lockers
- Onsite gym with showers, lockers, saunas
- Onsite laundry room with payrange machines
- Parking garage with valet
- Cherry Street Coffee House
- Avanti market
- Conference room
- Easily access to public transit



Marcelo Garces
+1 206 321 4177
marcelo.garces@jll.com

Floor plan

 Virtual tour





Location map



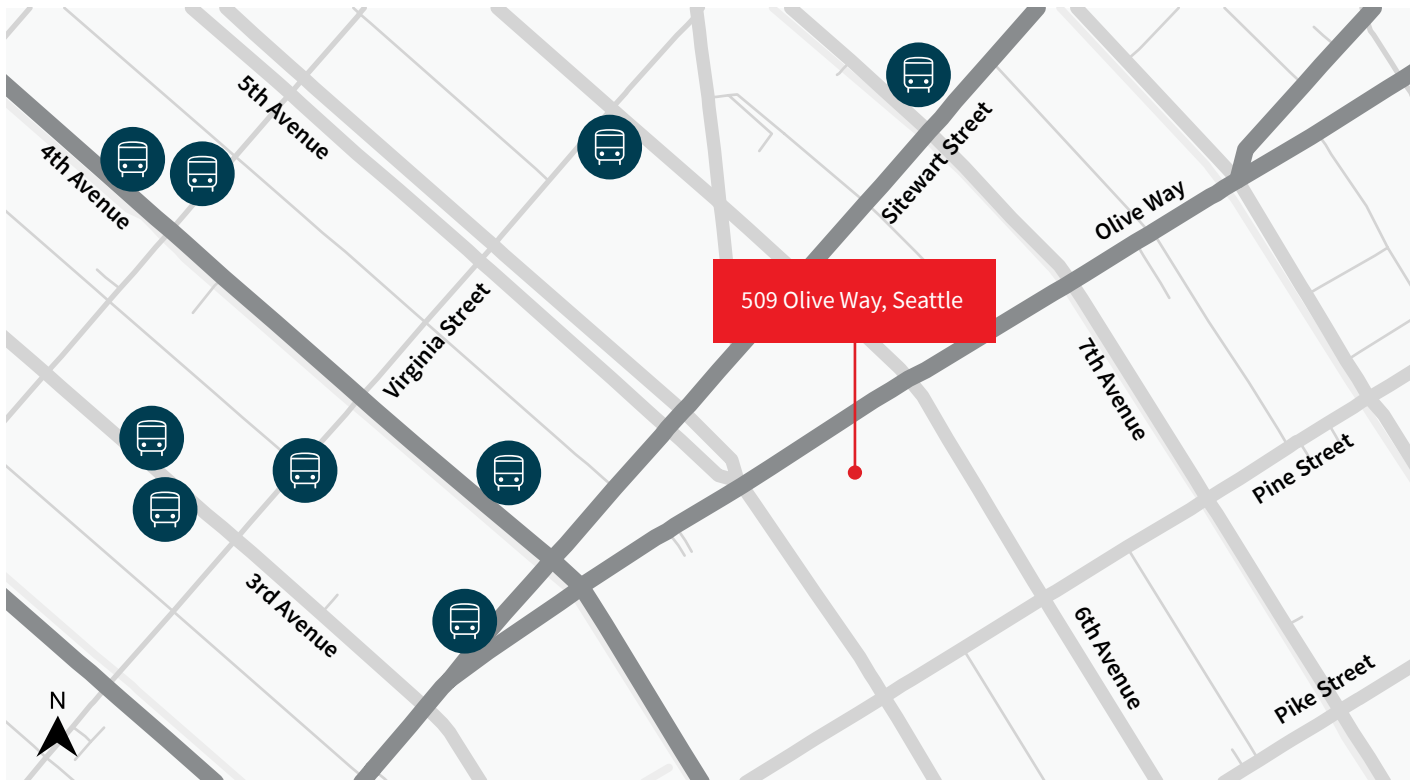
Walk Score : **99**



Transit Score : **100**



Bike Score : **82**



Marcelo Garces
+1 206 321 4177
marcelo.garces@jll.com