

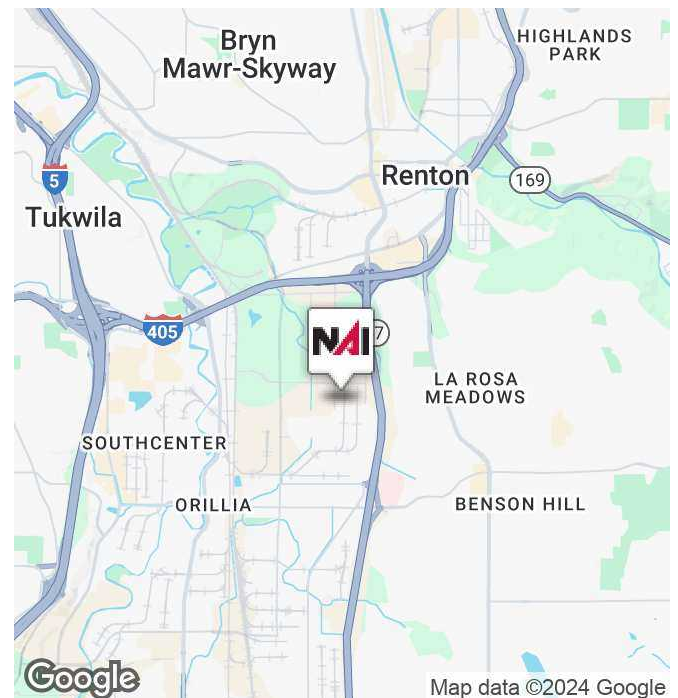


## 2900 Lind Avenue SW

Renton, Washington 98057

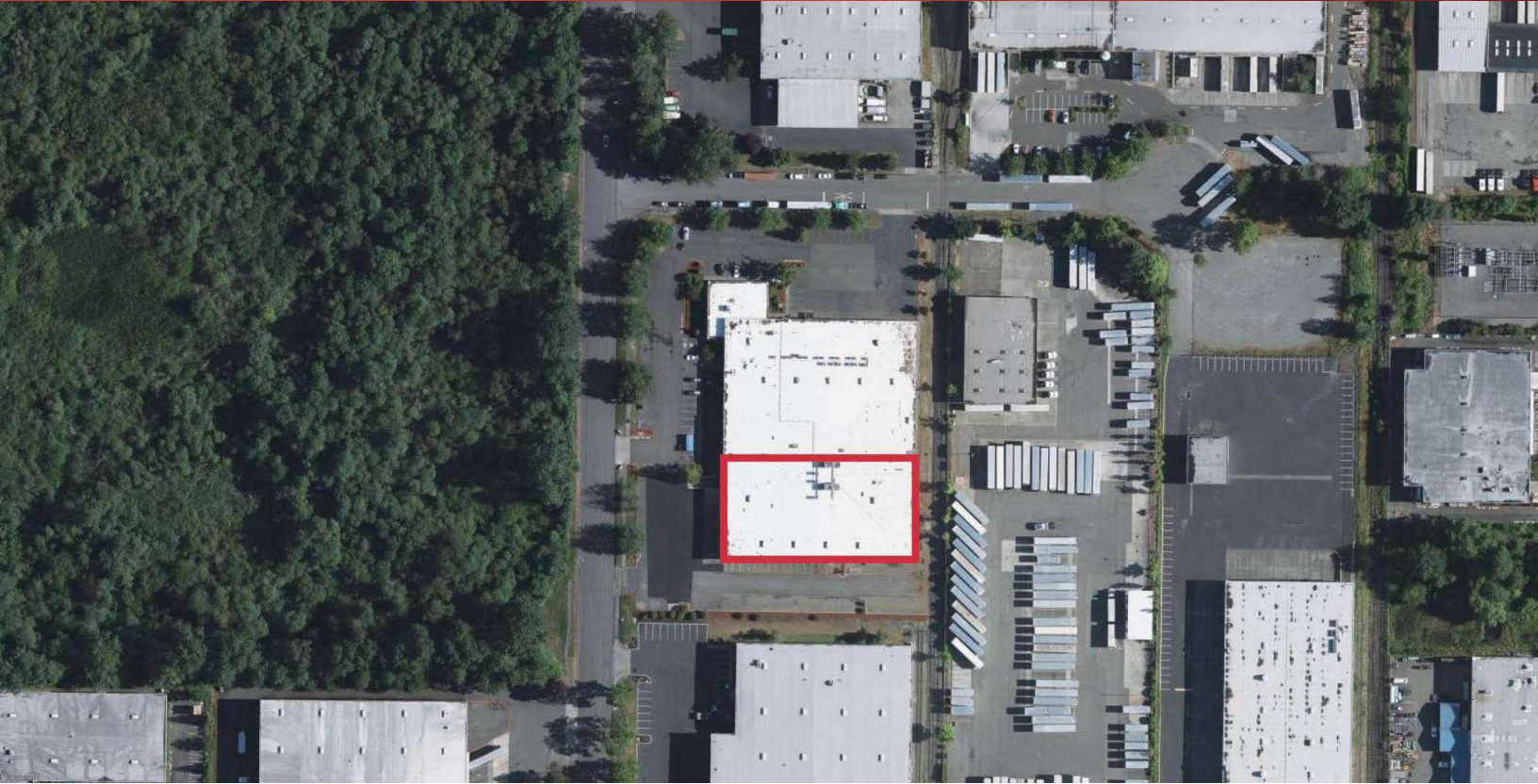
### Property Highlights

- 40,000 SF
- 1,350 Mezzanine office
- 18' Clear Height
- 1 Dock High Door
- 2 Oversized Grade Level Doors
- Flexible Sublease Terms
- Covered Loading Platform Provides Additional Dock High Loading
- Call Agent for Pricing – Below Market Rates
- Available Now



### Kent Channing

Partner | 425.586.5628  
kchanning@nai-pp.com



**Kent Channing**  
Partner | 425.586.5628  
kchanning@nai-psp.com

