

# STELLAR

## BUILDING

**29,298 SF Available**

2201 Pacific Avenue, Everett, WA 98201



**NEWMARK**

**MORGAN RICHEY, SIOR**

Managing Director

425-362-1409

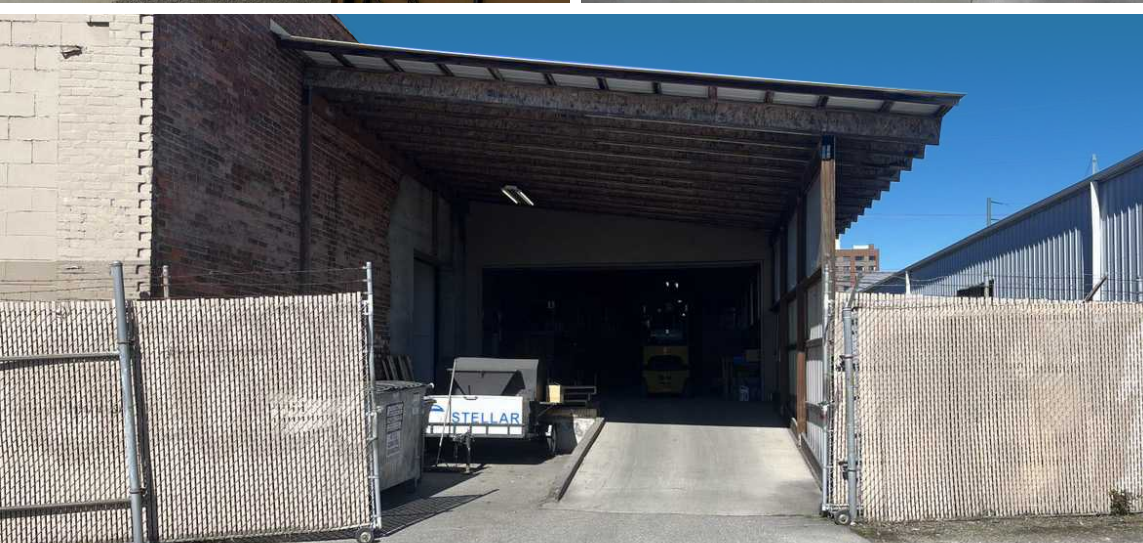
[morgan.richey@nrmk.com](mailto:morgan.richey@nrmk.com)

**JOSH SATTERLEE**

Associate

425-362-1396

[josh.satterlee@nrmk.com](mailto:josh.satterlee@nrmk.com)



# PROPERTY HIGHLIGHTS

- Ideal Retail/Distribution
- High visibility signage off of Pacific Ave.
- Loading: 1 dock high, 1 pony, 2 grade
- Showroom, will call and distribution
- Available Now
- Call brokers for rates
- Zoned MU

# BUILDING SF BREAKDOWN

Warehouse/showroom	21,783 SF
Stand Alone Metal Warehouse	3,640 SF
Covered & Secured Storage	3,875 SF
<b>Total</b>	<b>29,298 SF</b>

# FLOOR PLAN

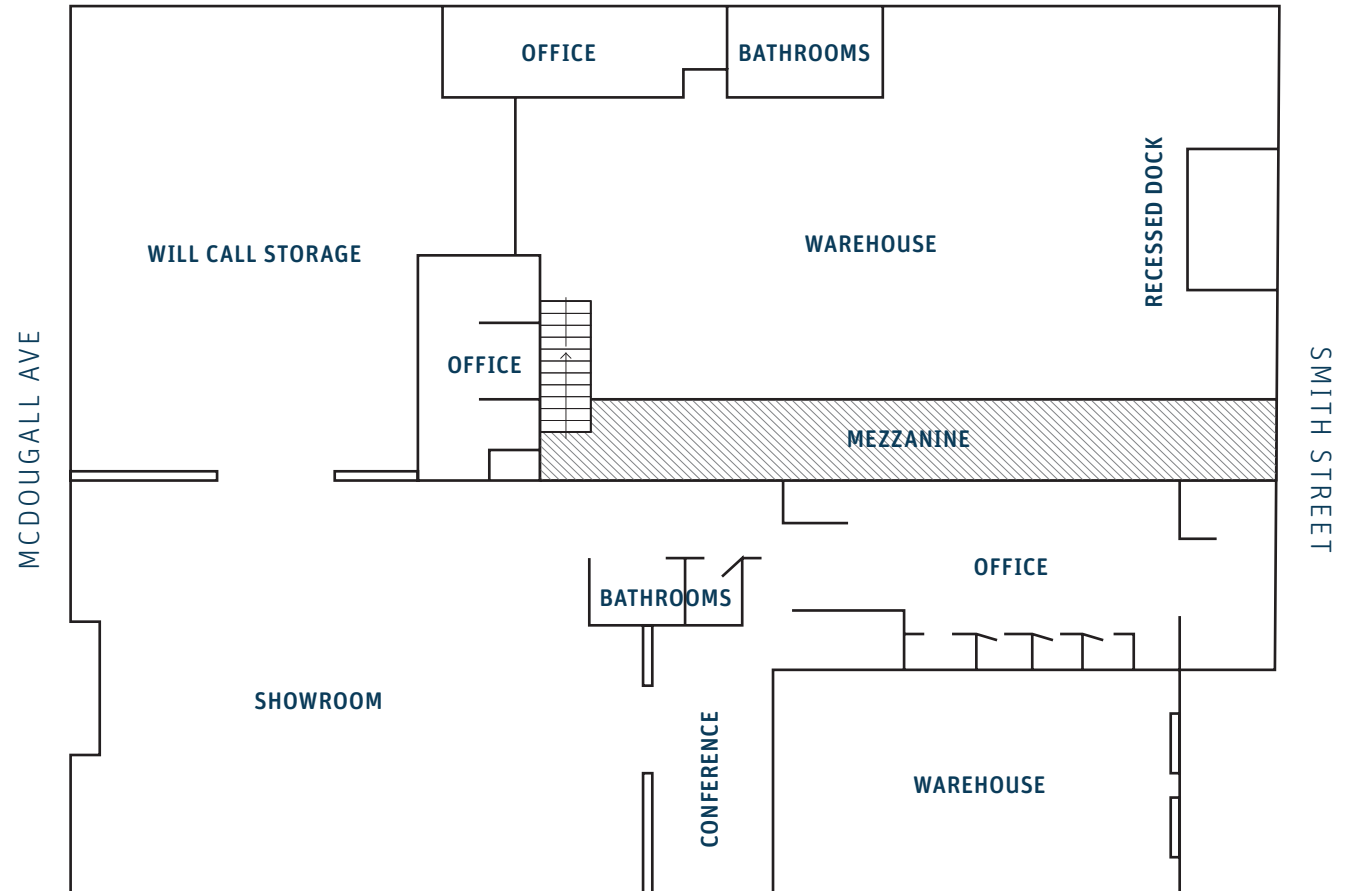
## WAREHOUSE STAGING AREA

Warehouse/showroom  
21,783 SF

Stand Alone Metal Warehouse  
3,640 SF

Covered & Secured Storage  
3,875 SF

**Total: 29,298 SF**



# STELLAR

## BUILDING

### **MORGAN RICHEY, SIOR**

Managing Director

425-362-1409

[morgan.richey@nrmk.com](mailto:morgan.richey@nrmk.com)

---

### **JOSH SATTERLEE**

Associate

425-362-1396

[josh.satterlee@nrmk.com](mailto:josh.satterlee@nrmk.com)

# NEWMARK

The information contained herein has been obtained from sources deemed reliable but has not been verified and no guarantee, warranty or representation, either express or implied, is made with respect to such information. Terms of sale or lease and availability are subject to change or withdrawal without notice.