

EASTVIEW

I&II

EASTVIEW I • 1370 116TH AVE NE
EASTVIEW II • 1310 116TH AVE NE

BELLEVUE, WA 98004

MEDICAL OFFICE FOR LEASE • ADJACENT TO OVERLAKE HOSPITAL



CBRE

THE HIGHLIGHTS

EASTVIEW I (1370 116TH AVE NE)



EASTVIEW II (1310 116TH AVE NE)



Quality medical office space adjacent to Overlake Hospital Campus



Adjacent to Sound Transit Link Light Rail Overlake Station



Built-out medical office/professional office space



Recently updated Eastview I common areas



Dedicated load/unload zones



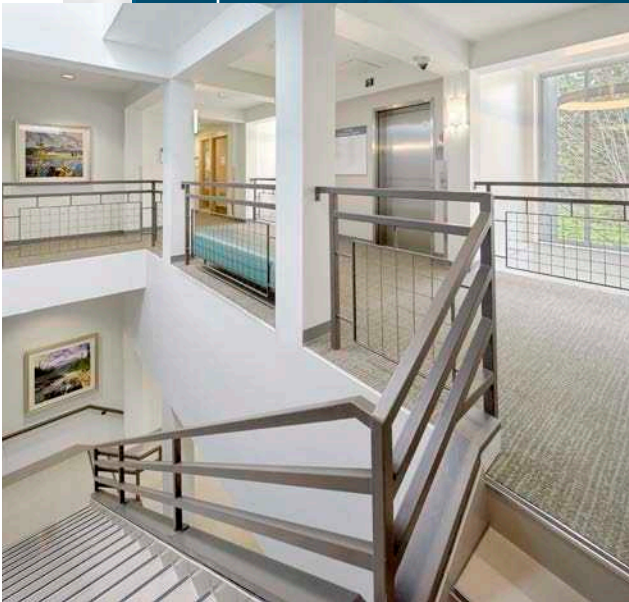
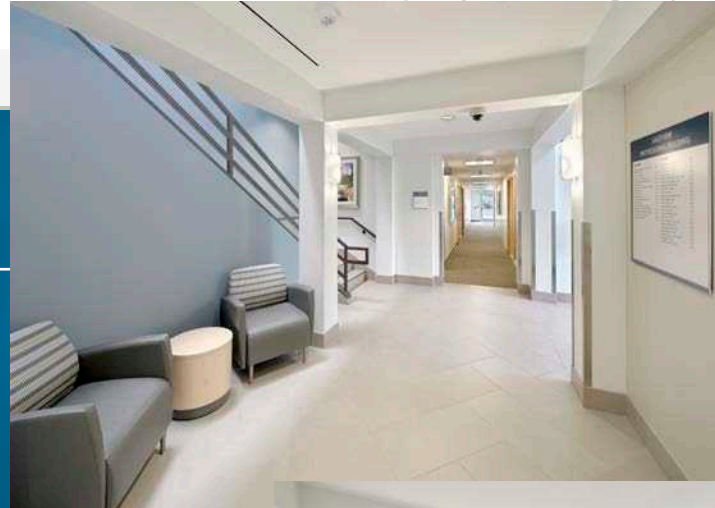
Convenient access to I-405 and Downtown Bellevue CBD

THE LOCATION



EASTVIEW I

1370 116TH AVENUE NE



EASTVIEW II

1310 116TH AVENUE NE



EASTVIEW

I&II

FOR MORE
INFORMATION
PLEASE CONTACT

TIM OWENS

+1 425 829 6913
tim.owens@cbre.com

MARCUS YAMAMOTO

+1 206 292 6062
marcus.yamamoto@cbre.com

KATIE SMITH

+1 206 292 6012
katie.m.smith@cbre.com

© 2024 CBRE, Inc. All rights reserved. This information has been obtained from sources believed reliable, but has not been verified for accuracy or completeness. You should conduct a careful, independent investigation of the property and verify all information. Any reliance on this information is solely at your own risk. CBRE and the CBRE logo are service marks of CBRE, Inc. All other marks displayed on this document are the property of their respective owners, and the use of such logos does not imply any affiliation with or endorsement of CBRE. Photos herein are the property of their respective owners. Use of these images without the express written consent of the owner is prohibited.PMStudio_October2024



CBRE