

LEASE

2500 CHERRY

2500 Cherry Pl Bremerton, WA 98310



OFFERING SUMMARY

Lease Rate: Negotiable

Building Size: 16,175 SF

Available SF: 920 - 4,558 SF

Lot Size: 1.41 Acres

Year Built: 1976

Zoning: EC

PROPERTY OVERVIEW

The 2500 Cherry Professional Building is located in the Sheridan Park neighborhood of East Bremerton; a quick ferry ride from downtown Seattle.

Located in the Historic Manette District of Bremerton, the 2500 Cherry building delivers the experience of modern image, efficient design, and the best branded image for the medical professional.

PROPERTY HIGHLIGHTS

- Puget Sound & Dyes Inlet View
- Entire floors available, or option to demise into smaller spaces
- Current floorplans can be modified to preferred specifications and layout
- Tenant Improvement Packages Available
- 97 Parking Stalls

Brandon Thomas
206.303.9595
bthomas@cbcworldwide.com

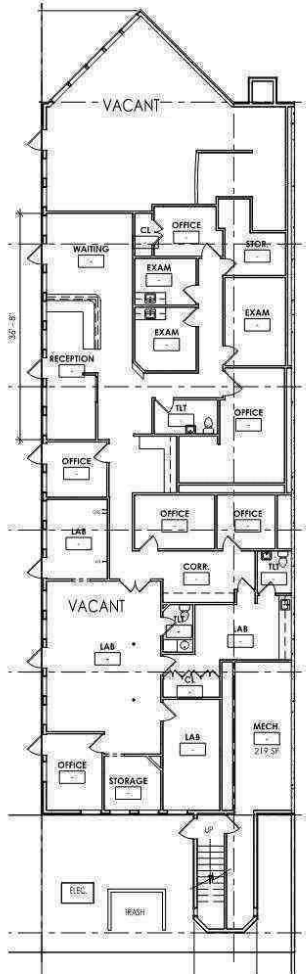


**COLDWELL BANKER
COMMERCIAL**
DANFORTH

LEASE

2500 CHERRY

2500 Cherry Pl Bremerton, WA 98310



AVAILABLE SPACES

| SUITE | SIZE (SF) | LEASE TYPE | LEASE RATE |
|-----------|----------------|------------|------------|
| 1st Floor | 920 - 4,558 SF | NNN | Negotiable |

Brandon Thomas
206.303.9595
bthomas@cbcworldwide.com



**COLDWELL BANKER
COMMERCIAL**
DANFORTH

LEASE

2500 CHERRY

2500 Cherry Pl Bremerton, WA 98310



Brandon Thomas

206.303.9595

bthomas@cbcworldwide.com

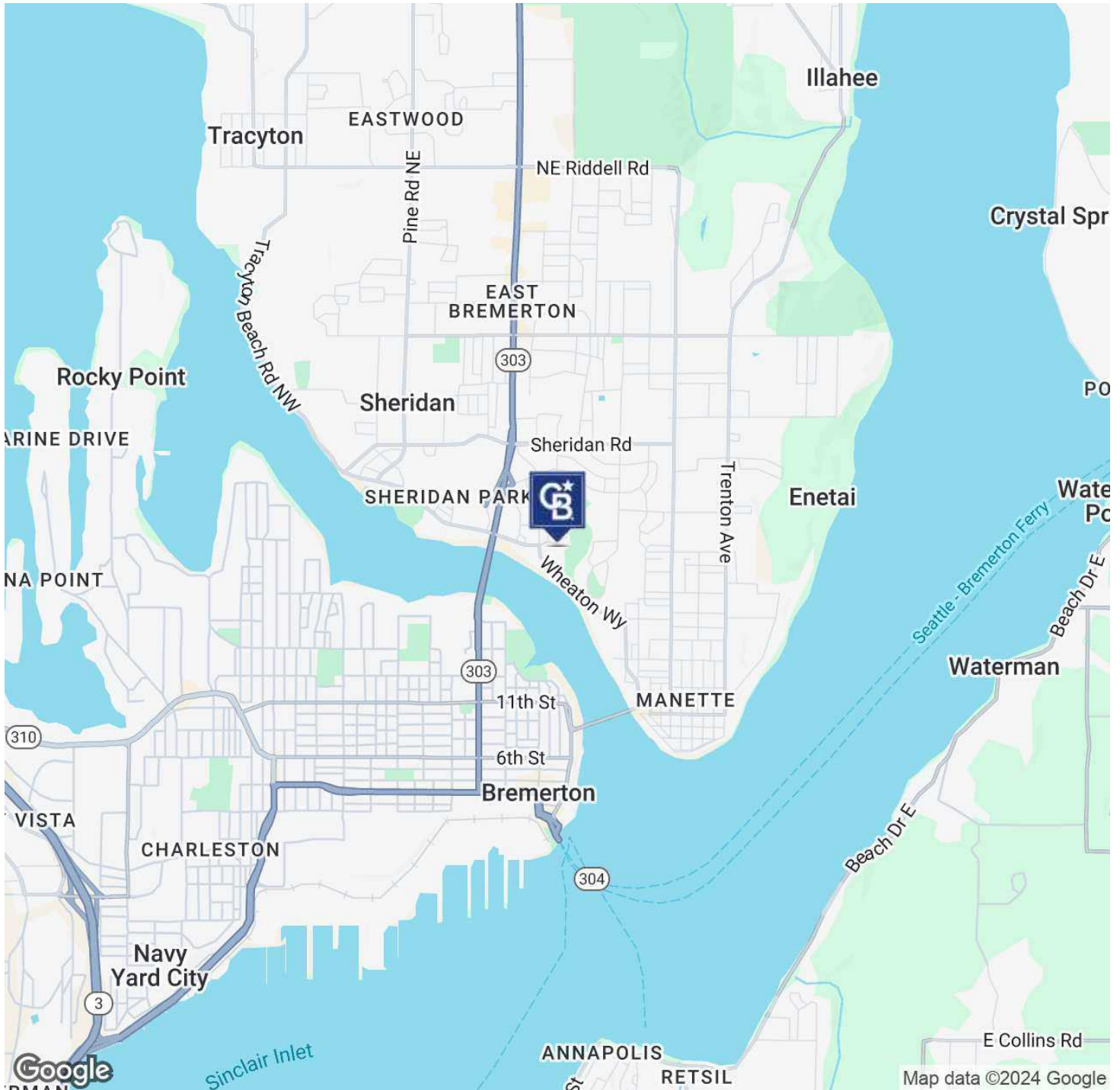


**COLDWELL BANKER
COMMERCIAL**
DANFORTH

LEASE

2500 CHERRY

2500 Cherry Pl Bremerton, WA 98310



Brandon Thomas
206.303.9595
bthomas@cbcworldwide.com



**COLDWELL BANKER
COMMERCIAL**
DANFORTH