



KENT BUSINESS
CAMPUS

827-841 CENTRAL AVE N | KENT, WA 98032

827 - 841 CENTRAL AVE N
KENT, WA 98032



498-3,527 SF

OFFICE SPACE AVAILABLE

CALL

FOR RATES



133k
TOTAL
POPULATION

104k
DAYTIME
POPULATION

\$133k
AVG. HOUSEHOLD
INCOME

6.5k
BUSINESSES

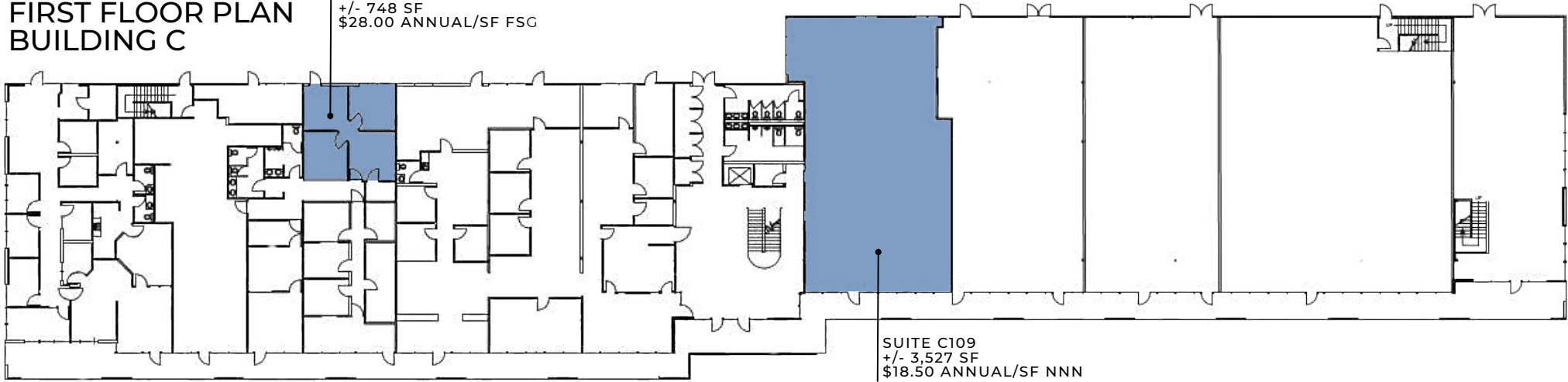
64%
ADULTS WITH
COLLEGE EDUCATION

66k
EMPLOYEES

*2024 PROJECTIONS FOR KENT, WA. COLLECTED VIA SITESUSA

FIRST FLOOR PLAN BUILDING C

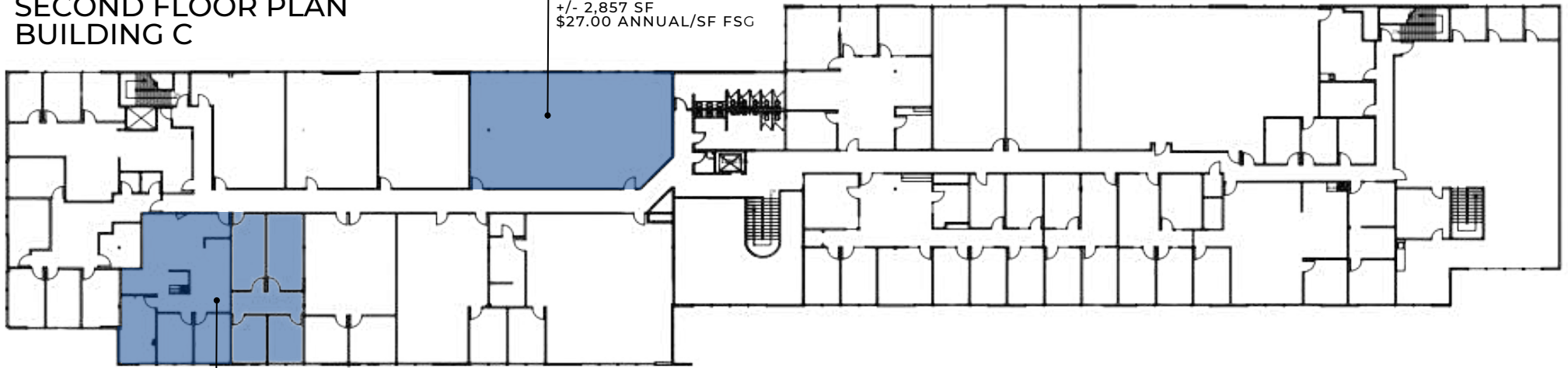
SUITE C132
+/- 748 SF
\$28.00 ANNUAL/SF FSG



SUITE C109
+/- 3,527 SF
\$18.50 ANNUAL/SF NNN

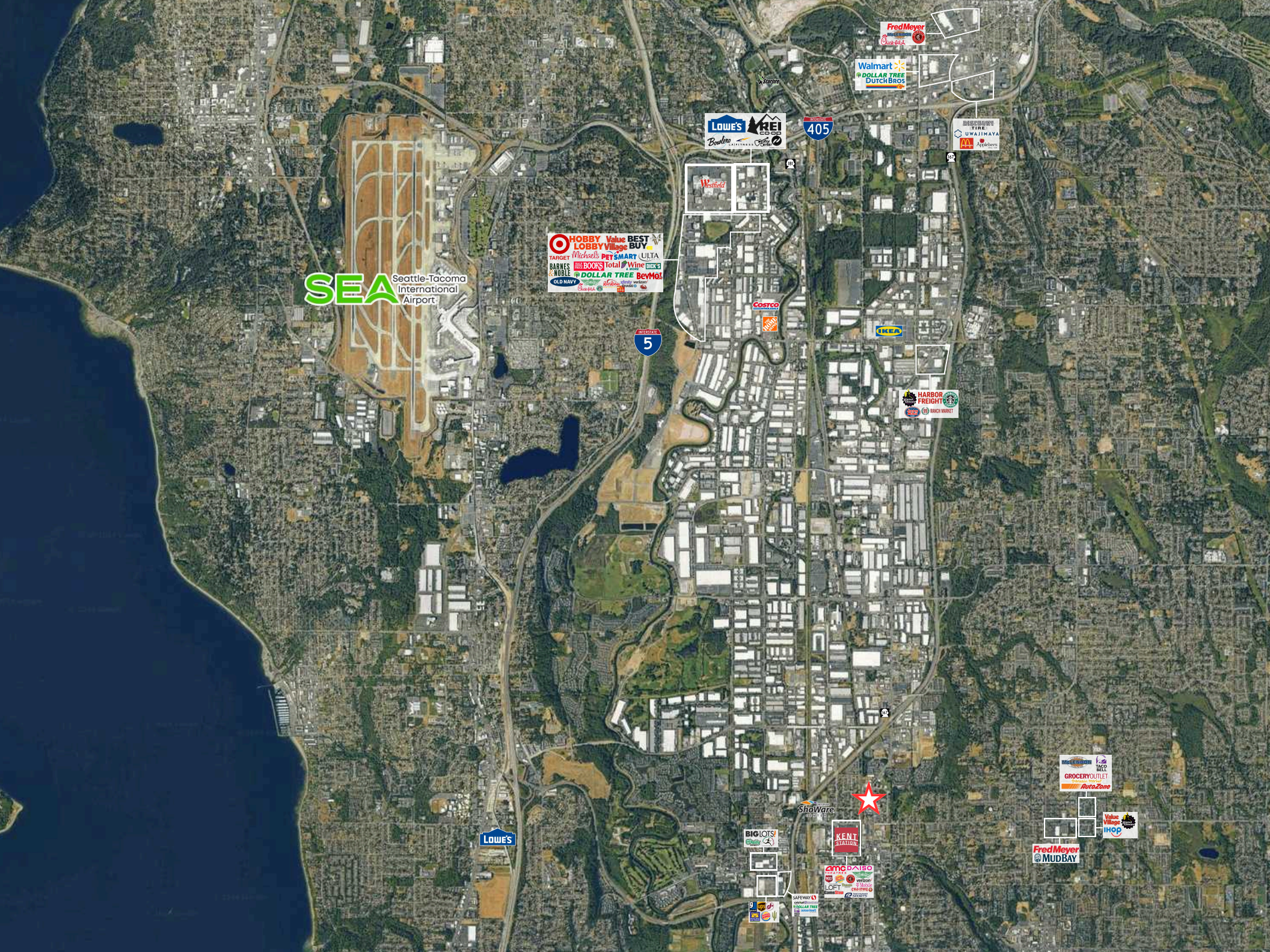
SECOND FLOOR PLAN BUILDING C

SUITE C215
+/- 2,857 SF
\$27.00 ANNUAL/SF FSG



SUITE C206
+/- 2,358 SF
\$27.00 ANNUAL/SF FSG

Quality office space with abundant parking and monument signage available on Central Ave



SEA Seattle-Tacoma International Airport

HOBBY LOBBY **Value Village** **BEST BUY**
TARGET **Michaels** **PET SMART** **ULTA**
BARNES & NOBLE **BOOKS** **Total Wine** **DISCS**
DOLLAR TREE **BeVoli**

Lowé's **REI**
Books **Home Depot** **Five Star**

Fred Meyer
Walmart **DOLLAR TREE** **Dutch Bros**

UWAIWAYA
Applebee's

INTERSTATE 5

INTERSTATE 405

Westfield

Costco

IKEA

HARBOR FREIGHT
Starbucks **RANCH MARKET**

Lowé's



ShoWare

BIG LOTS

KENT STATIONS

amc DAIISO
LOP **Verizon** **China Mobile** **China Unicom** **China Telecom**

SAFEWAY **DOLLAR TREE**

GROCERY OUTLET
Ranch Market

Fred Meyer **MUD BAY**

Value Village **ihop**



ADAM GREENBERG

SENIOR VICE PRESIDENT | PARTNER

ADAM@PAADVISORS.COM

425.503.1339



TYSON CLARKE

SENIOR VICE PRESIDENT | PARTNER

TYSON@PAADVISORS.COM

360.319.4855