

CENTER PLAZA

2620 & 2750 WILLIAMSON PLACE, DUPONT, WA 98327

Warehouse/Flex Space



Available Spaces

Building 1, Suite 100/104

- 4,440 SF shell with 433 SF office
- 2 oversized GL door (14' x 12')
- 200 amps of 208/120 volt, 3-phase power
- Endcap space with frontage
- Warehouse floor drain
- Available now

Building 2, Suite 129

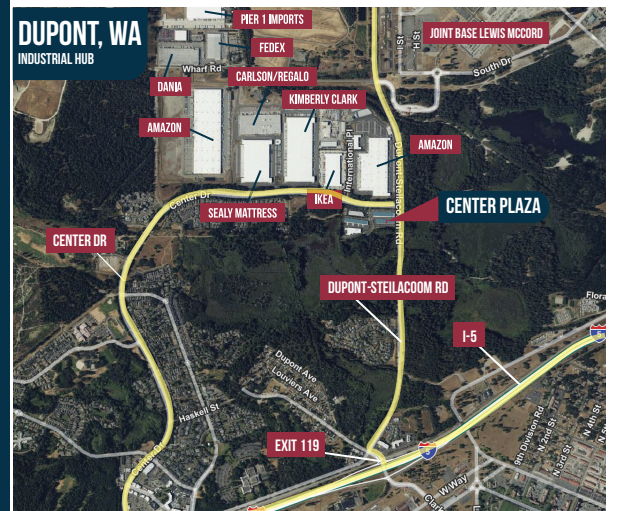
- 2,956 SF shell with 1,156 SF office
- 1 oversized GL door (14' x 12')
- 100 amps of 208/120 volt, 3-phase power
- Available now

Building 2, Suite 133

- 1,760 SF shell with 318 SF office and 715 SF production area
- Some food production infrastructure in place including ventilation, wain-scotting, and compartment sink hook-ups
- Production area can be used as low clear height storage
- Available 1/1/2025

Property Features

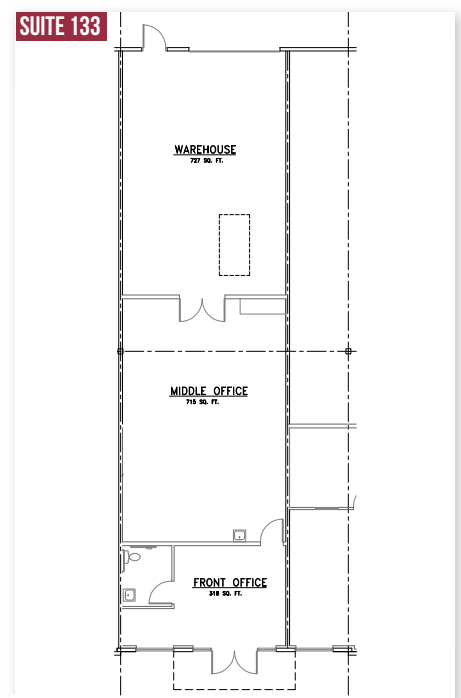
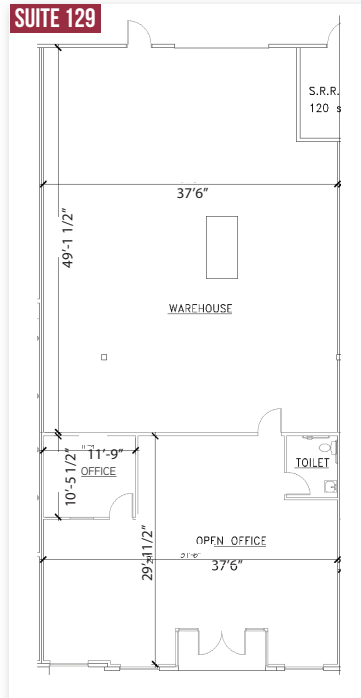
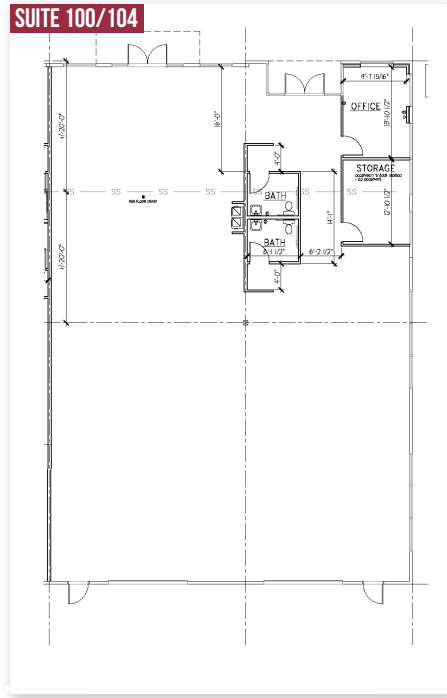
- 21' warehouse clear height
- Quality office finishes with HVAC
- Excellent access to I-5
- Abundant parking
- On-site Anytime Fitness



CENTER PLAZA



2620 & 2750 Williamson Place, DuPont, WA 98327



Contact CBRE for more info:

Monte Decker
 253-596-0041
 monte.decker@cbre.com

Chris Cowles
 253-596-0048
 chris.cowles@cbre.com

Lisa Rowe
 206-777-5122
 lisar@davispropertiesll.com

© 2024 CBRE, Inc. All rights reserved. This information has been obtained from sources believed reliable but has not been verified for accuracy or completeness. CBRE, Inc. makes no guarantee, representation or warranty and accepts no responsibility or liability as to the accuracy, completeness, or reliability of the information contained herein. You should conduct a careful, independent investigation of the property and verify all information. Any reliance on this information is solely at your own risk. SD 10.14.24

Owned & Operated by:



davispropertiesll.com